


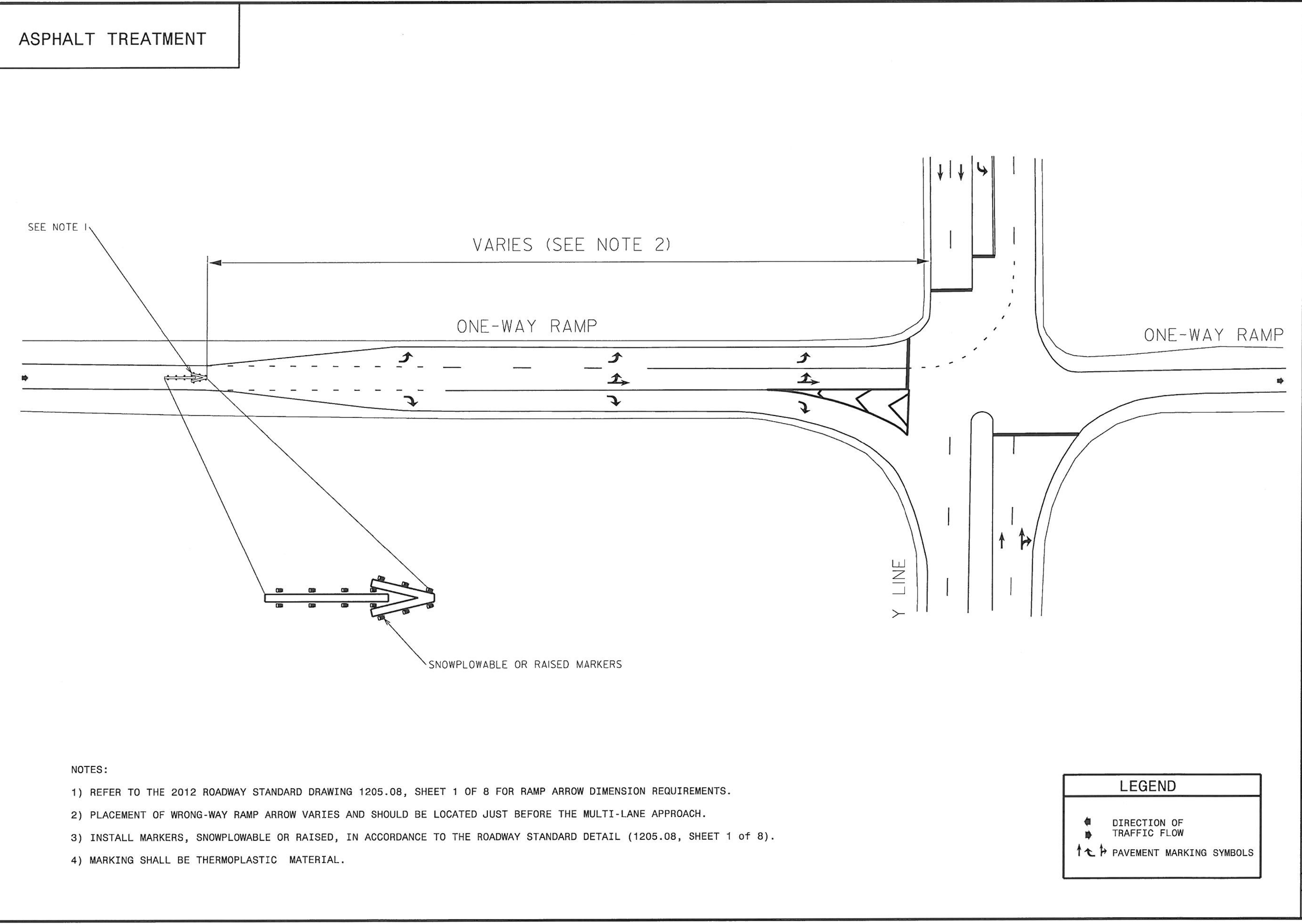


PROJECT REFERENCE NO. R-5703	SHEET NO. PMP-3
APPROVED:  9/15/2017	
DATE: _____	
	
DOCUMENT NOT CONSIDERED FINAL UNLESS ALL SIGNATURES COMPLETED	
 INTERNATIONAL 8000 Regency Parkway, Suite 600, Cary, NC 27518 Phone: (919) 463-5488 MBAKERINTL.COM PROFESSIONAL CORPORATION LICENSE NO. F-1084	

STATE OF NORTH CAROLINA
 DEPT. OF TRANSPORTATION
 DIVISION OF HIGHWAYS
 RALEIGH, N.C.



4-16
 ENGLISH DETAIL DRAWING FOR
PAVEMENT MARKINGS
 WRONG WAY RAMP ARROW
 ONE-LANE EXIT RAMP AT MULTI-LANE APPROACH

SHEET 1 OF 2



- NOTES:
- REFER TO THE 2012 ROADWAY STANDARD DRAWING 1205.08, SHEET 1 OF 8 FOR RAMP ARROW DIMENSION REQUIREMENTS.
 - PLACEMENT OF WRONG-WAY RAMP ARROW VARIES AND SHOULD BE LOCATED JUST BEFORE THE MULTI-LANE APPROACH.
 - INSTALL MARKERS, SNOWPLOWABLE OR RAISED, IN ACCORDANCE TO THE ROADWAY STANDARD DETAIL (1205.08, SHEET 1 OF 8).
 - MARKING SHALL BE THERMOPLASTIC MATERIAL.

LEGEND

	DIRECTION OF TRAFFIC FLOW
	PAVEMENT MARKING SYMBOLS

4-16
 STATE OF NORTH CAROLINA
 DEPT. OF TRANSPORTATION
 DIVISION OF HIGHWAYS
 RALEIGH, N.C.

ENGLISH DETAIL DRAWING FOR
PAVEMENT MARKINGS
 WRONG WAY RAMP ARROW
 ONE-LANE EXIT RAMP AT MULTI-LANE APPROACH

SHEET 1 OF 2

8/31/2017
 R:\Traffic\Pavement Marking Plan\PMP SHEETS\R-5703 PMP_03 TYPICAL RAMP ARROW.dgn
 George Karageorge