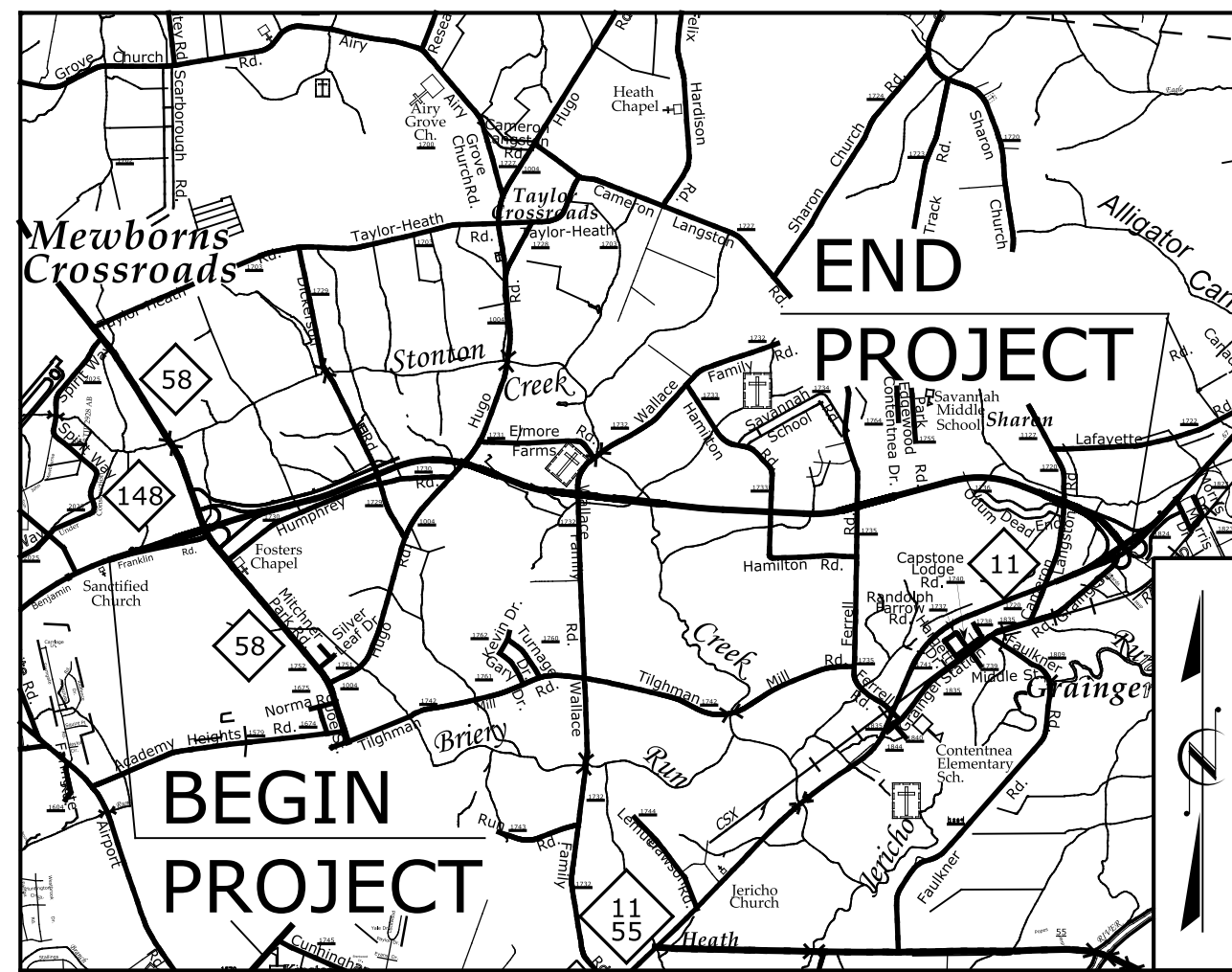
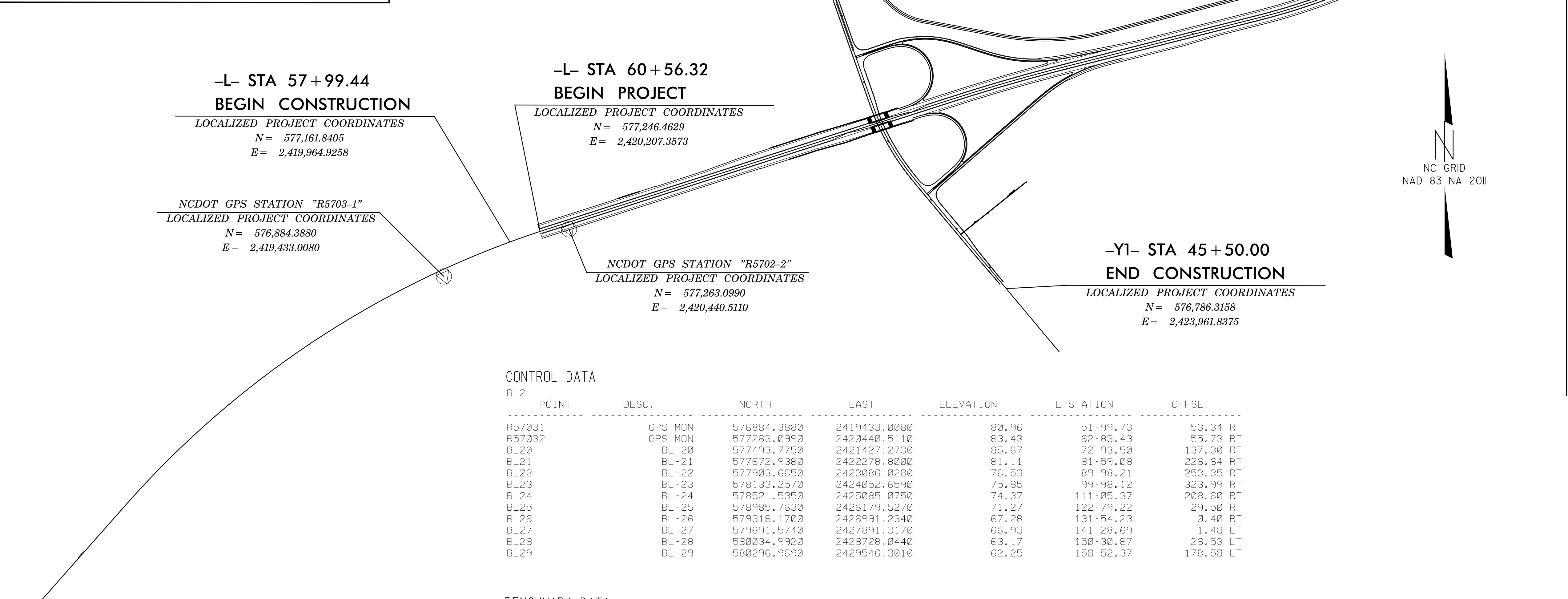


# SURVEY CONTROL SHEET R-5703



**VICINITY MAP**



**CONTROL DATA**

POINT	DESC.	NORTH	EAST	ELEVATION	L STATION	OFFSET
R57031	GPS MON	576884.3880	2419433.0080	80.96	51+99.73	53.34 RT
R57032	GPS MON	577263.0990	2420440.5110	83.43	62+83.43	55.73 RT
BL20	BL-20	577493.7750	2421427.2730	85.67	72+93.50	137.30 RT
BL21	BL-21	577672.9380	2422278.8000	81.11	81+59.08	226.64 RT
BL22	BL-22	577903.6650	2423086.0280	76.53	89+98.21	253.35 RT
BL23	BL-23	578133.2570	2424052.6590	75.85	99+98.12	323.99 RT
BL24	BL-24	578521.5350	2425085.0750	74.37	111+05.37	208.60 RT
BL25	BL-25	578985.7630	2426179.5270	71.27	122+79.22	29.50 RT
BL26	BL-26	579318.1700	2426991.2340	67.28	131+54.23	0.40 RT
BL27	BL-27	579691.5740	2427891.3170	66.93	141+28.69	1.48 LT
BL28	BL-28	580034.9920	2428728.0440	63.17	150+30.87	26.53 LT
BL29	BL-29	580296.9690	2429546.3010	62.25	158+52.37	178.58 LT

**BENCHMARK DATA**

BM10	ELEVATION = 76.99
N 577986	E 2422782
BL2 STATION 40+30.00 163 LEFT	
RR SPIKE IN BASE OF 24" PINE	
BM11	ELEVATION = 77.41
N 578300	E 2425417
BL1 STATION 8+85.00 104 RIGHT	
RR SPIKE IN BASE OF 36" OAK	
BM12	ELEVATION = 69.75
N 579932	E 2427837
BL2 STATION 94+77.00 243 LEFT	
RR SPIKE IN BASE OF 30" PINE	

**DATUM DESCRIPTION**

THE LOCALIZED COORDINATE SYSTEM DEVELOPED FOR THIS PROJECT IS BASED ON THE STATE PLANE COORDINATES ESTABLISHED BY NCGS FOR MONUMENT "P60"

WITH NAD 83/NA 2011 STATE PLANE GRID COORDINATES OF NORTHING: 574939.107(ft) EASTING: 2435346.9420(ft) ELEVATION: 53.49(ft)

THE AVERAGE COMBINED GRID FACTOR USED ON THIS PROJECT (GROUND TO GRID) IS: 0.999876417

THE N.C. LAMBERT GRID BEARING AND LOCALIZED HORIZONTAL GROUND DISTANCE FROM "P60" TO -L- STATION 60+56.32 IS N 81° 20' 04.17" W 15,314.40'

ALL LINEAR DIMENSIONS ARE LOCALIZED HORIZONTAL DISTANCES VERTICAL DATUM USED IS NAVD 88

**NOTES:**

THE CONTROL DATA FOR THIS PROJECT CAN BE FOUND ELECTRONICALLY BY SELECTING PROJECT CONTROL DATA AT:  
[HTTP://WWW.NCDOT.GOV/DOH/PRECONSTRUCT/HIGHWAY/LOCATION/PROJECT/](http://www.ncdot.gov/DOH/PRECONSTRUCT/HIGHWAY/LOCATION/PROJECT/)

THE FILES TO BE FOUND ARE AS FOLLOWS:  
 TIP R5703\_LS\_CONTROL.TXT

SITE CALIBRATION INFORMATION HAS NOT BEEN PROVIDED FOR THIS PROJECT. IF FURTHER INFORMATION IS NEEDED, PLEASE CONTACT THE LOCATION AND SURVEYS UNIT.

INDICATES GEODETIC CONTROL MONUMENTS USED OR SET FOR HORIZONTAL PROJECT CONTROL BY THE NCDOT LOCATION AND SURVEYS UNIT.  
 PROJECT CONTROL ESTABLISHED USING GLOBAL POSITIONING SYSTEM.

**NOTE: DRAWING NOT TO SCALE**