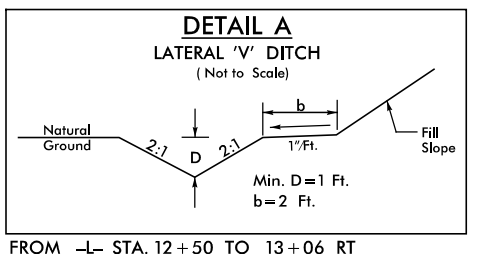
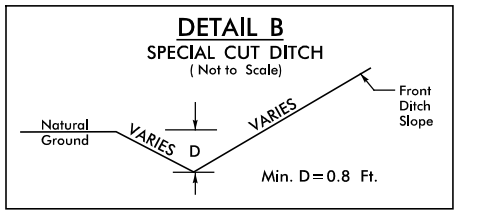


8/17/2017
 I:\Projects\B-4462\6.0_CAD_BIM\6.2_Work\In_Progress\Hydraulics\Erosion_Control\cadd\B-4462_04_erosion_inal.dgn
 ICA ENGINEERING, INC.

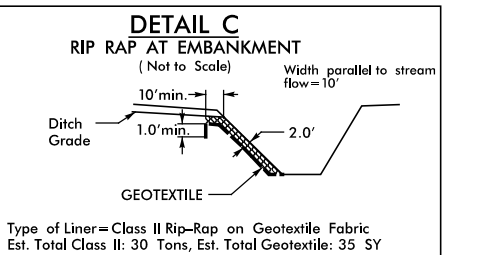
FINAL EROSION CONTROL FOR CONSTRUCTION SHEET 4



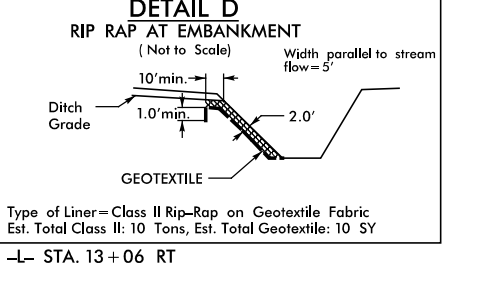
FROM -L- STA. 12+50 TO 13+06 RT
 EST. DDE: 40 CY
 FROM -L- STA. 13+36 TO 16+00 RT
 EST. DDE: 240 CY
 FROM -L- STA. 13+67 TO 16+08 LT
 EST. DDE: 50 CY
 (SEE DITCH GRADE SHEET 5)



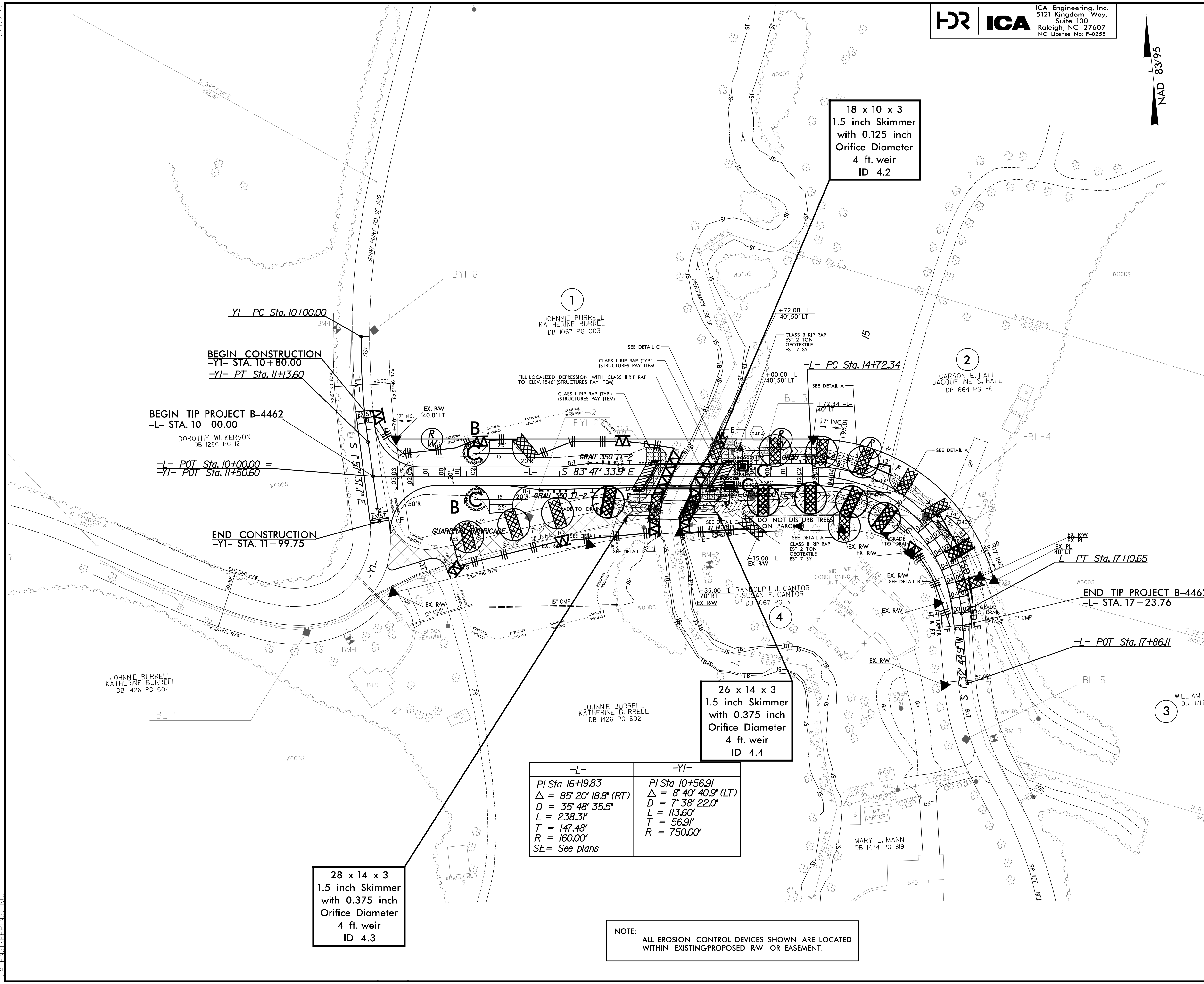
FROM -L- STA. 16+42 TO 17+00 LT
 (SEE XS'S SHEET 4-4 & 4-7)
 (SEE DITCH GRADE SHEET 5)



Type of Liner=Class B Rip-Rap on Geotextile Fabric
 Est. Total Class B: 30 Tons, Est. Total Geotextile: 30 SY
 -L- STA. 13+67 LT
 -L- STA. 13+36 RT



Type of Liner=Class B Rip-Rap on Geotextile Fabric
 Est. Total Class B: 10 Tons, Est. Total Geotextile: 10 SY
 -L- STA. 13+06 RT



-L-	-YI-
PI Sta 16+19.83	PI Sta 10+56.91
$\Delta = 85' 20'' 18.8'' (RT)$	$\Delta = 8' 40'' 40.9'' (LT)$
$D = 35' 48'' 35.5''$	$D = 7' 38'' 22.0''$
$L = 238.31'$	$L = 113.60'$
$T = 147.48'$	$T = 56.91'$
$R = 160.00'$	$R = 750.00'$
SE= See plans	

28 x 14 x 3
 1.5 inch Skimmer
 with 0.375 inch
 Orifice Diameter
 4 ft. weir
 ID 4.3

26 x 14 x 3
 1.5 inch Skimmer
 with 0.375 inch
 Orifice Diameter
 4 ft. weir
 ID 4.4

18 x 10 x 3
 1.5 inch Skimmer
 with 0.125 inch
 Orifice Diameter
 4 ft. weir
 ID 4.2

NOTE:
 ALL EROSION CONTROL DEVICES SHOWN ARE LOCATED
 WITHIN EXISTING/PROPOSED RW OR EASEMENT.

NOTE:
 FOR PROFILES, SEE SHEET 5.

	PAVEMENT REMOVAL
	APPROACH SLAB