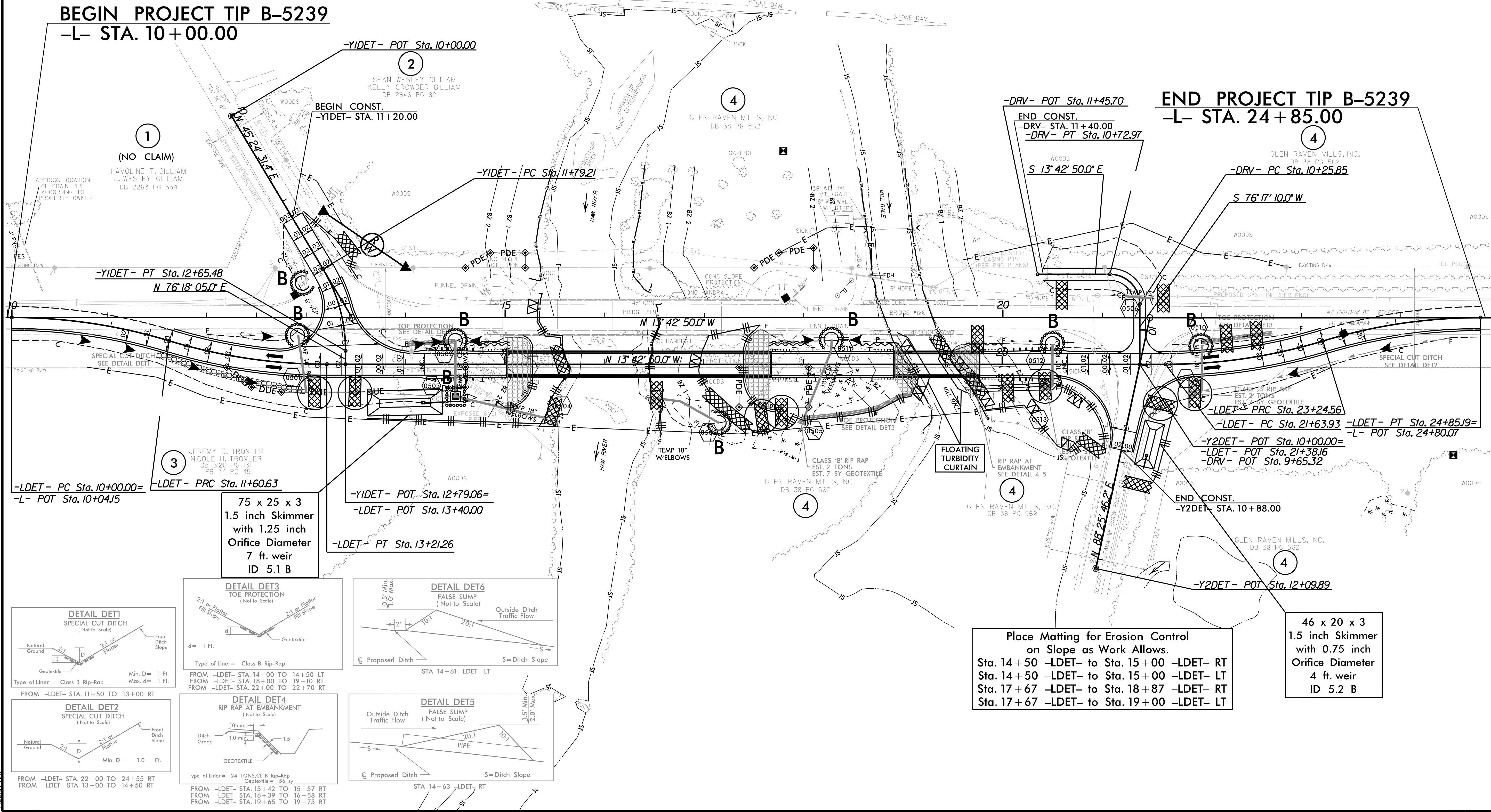


PROJECT REFERENCE NO.		SHEET NO.	
B-5239		EC-5/CONST.5	
RW SHEET NO.			
ROADWAY DESIGN ENGINEER		HYDRAULICS ENGINEER	

NAD 83/NSRS 2007

DETOUR



BEGIN PROJECT TIP B-5239
-L- STA. 10+00.00

END PROJECT TIP B-5239
-L- STA. 24+85.00

1
 (NO CLAIM)
 HAVOLINE T. GILLIAM
 J. WESLEY GILLIAM
 DB 2263 PG 554

2
 SEAN WESLEY GILLIAM
 KELLY CROWDER GILLIAM
 DB 2846 PG 82

4
 GLEN RAVEN MILLS, INC.
 DB 38 PG 562

4
 GLEN RAVEN MILLS, INC.
 DB 38 PG 562

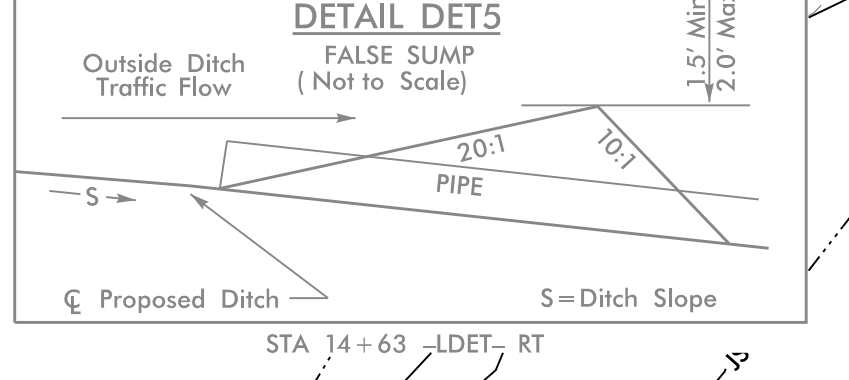
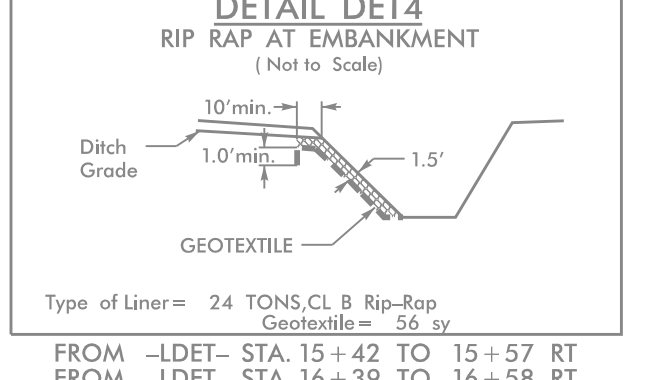
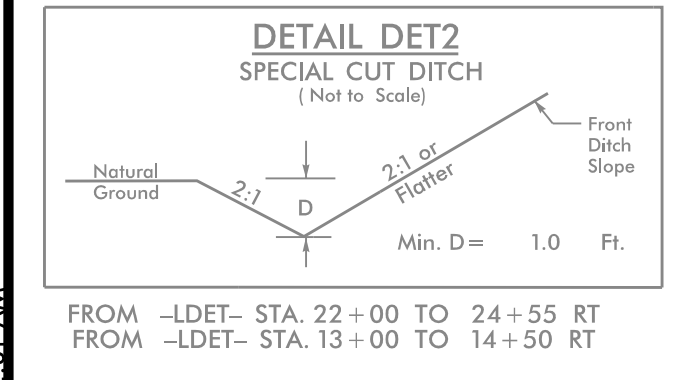
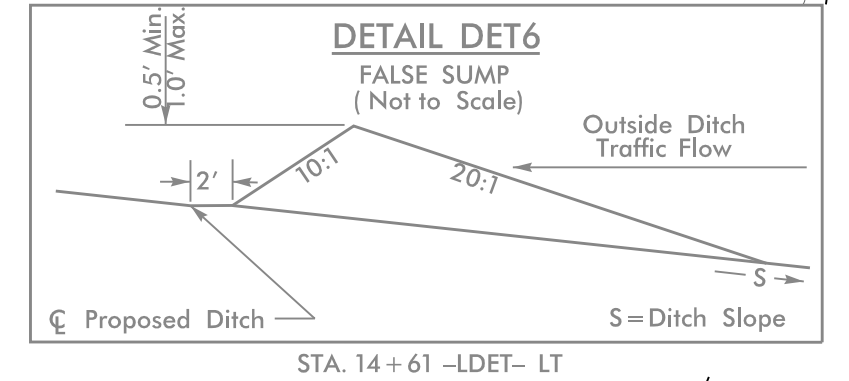
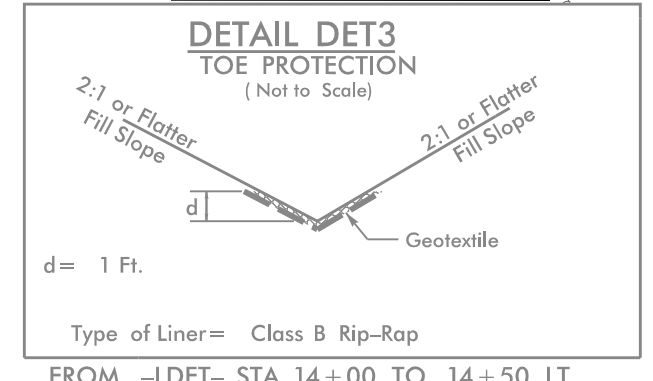
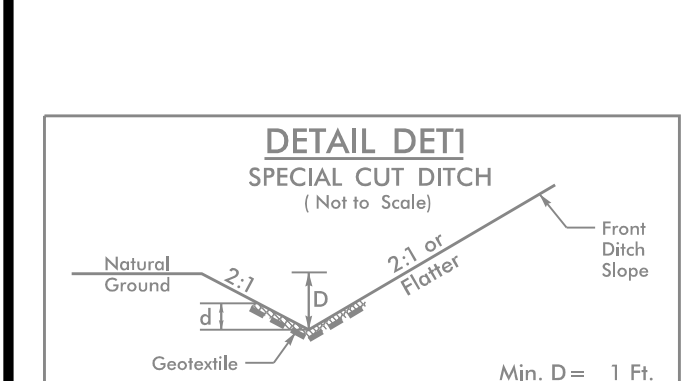
4
 GLEN RAVEN MILLS, INC.
 DB 38 PG 562

3
 JEREMY D. TROXLER
 NICOLE H. TROXLER
 DB 3120 PG 131
 PB 74 PG 45

75 x 25 x 3
 1.5 inch Skimmer
 with 1.25 inch
 Orifice Diameter
 7 ft. weir
 ID 5.1 B

Place Matting for Erosion Control
 on Slope as Work Allows.
 Sta. 14+50 -LDET- to Sta. 15+00 -LDET- RT
 Sta. 14+50 -LDET- to Sta. 15+00 -LDET- LT
 Sta. 17+67 -LDET- to Sta. 18+87 -LDET- RT
 Sta. 17+67 -LDET- to Sta. 19+00 -LDET- LT

46 x 20 x 3
 1.5 inch Skimmer
 with 0.75 inch
 Orifice Diameter
 4 ft. weir
 ID 5.2 B



81799
 10/8/2017
 B5239_EC_PSH.dgn
 9:27:01 AM