

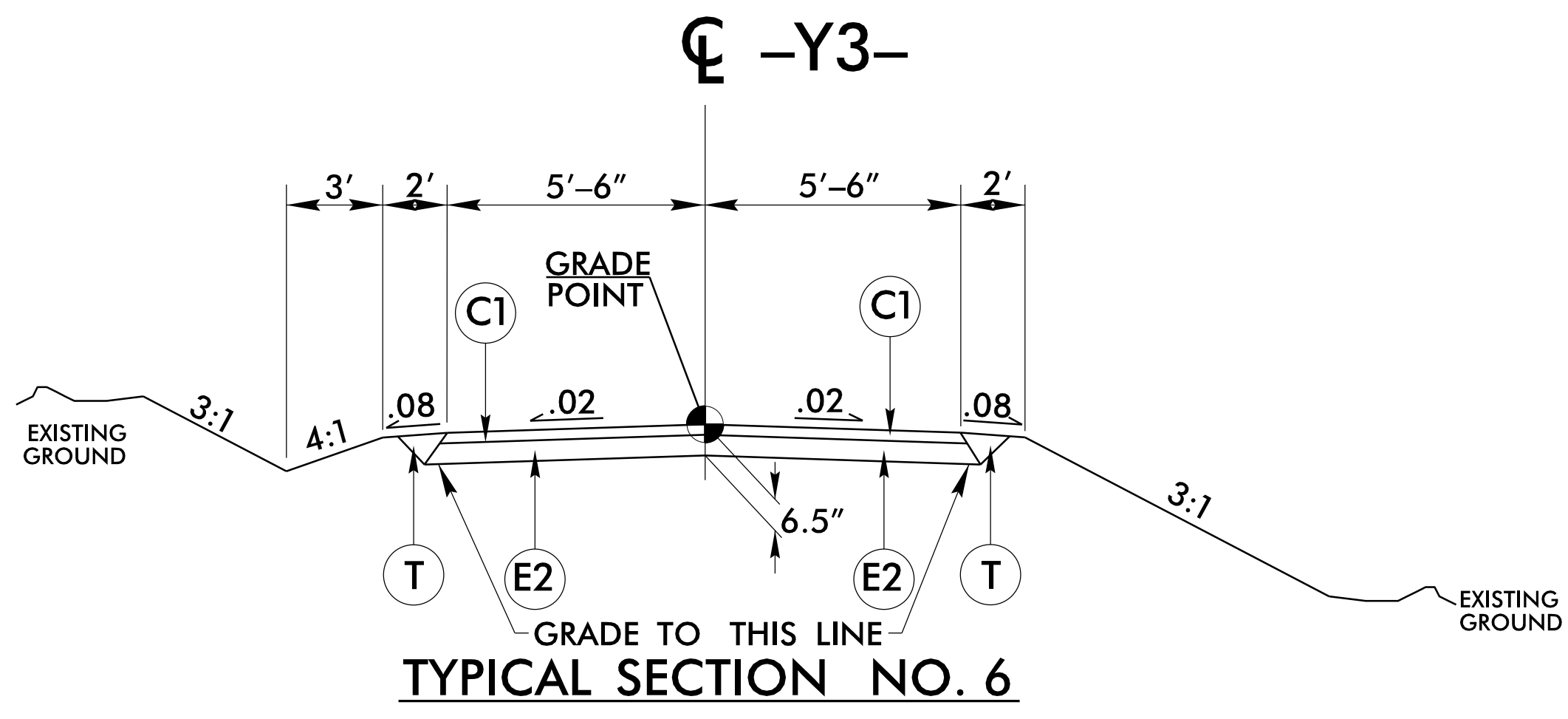


10/16/2017 10:16:20 AM B5239_Rdy_tup.dgn

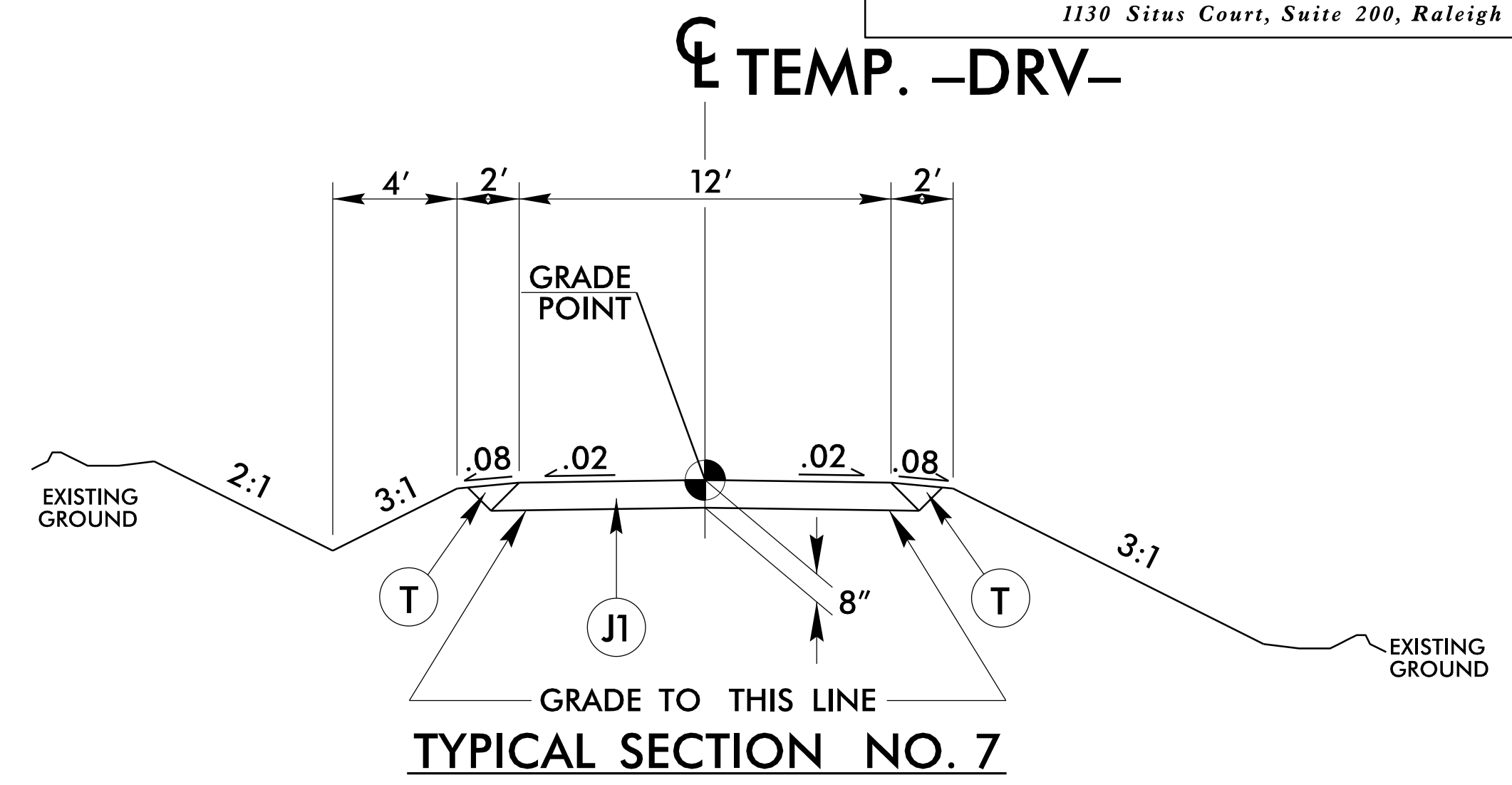
| | |
|--|--|
| PROJECT REFERENCE NO. B-5239 | SHEET NO. 2A-3 |
| RW SHEET NO. | |
| ROADWAY DESIGN ENGINEER  | HYDRAULICS ENGINEER  |

DOCUMENT NOT CONSIDERED FINAL UNLESS ALL SIGNATURES COMPLETED



TYPICAL SECTION NO. 6

NOTE: TRANSITION FROM EXISTING TO TYPICAL SECTION NO. 6
 -Y3- STA. 10+15.00 TO STA. 10+21.99
USE TYPICAL SECTION NO. 6:
 -Y3- STA. 10+21.99 TO STA. 10+86.44

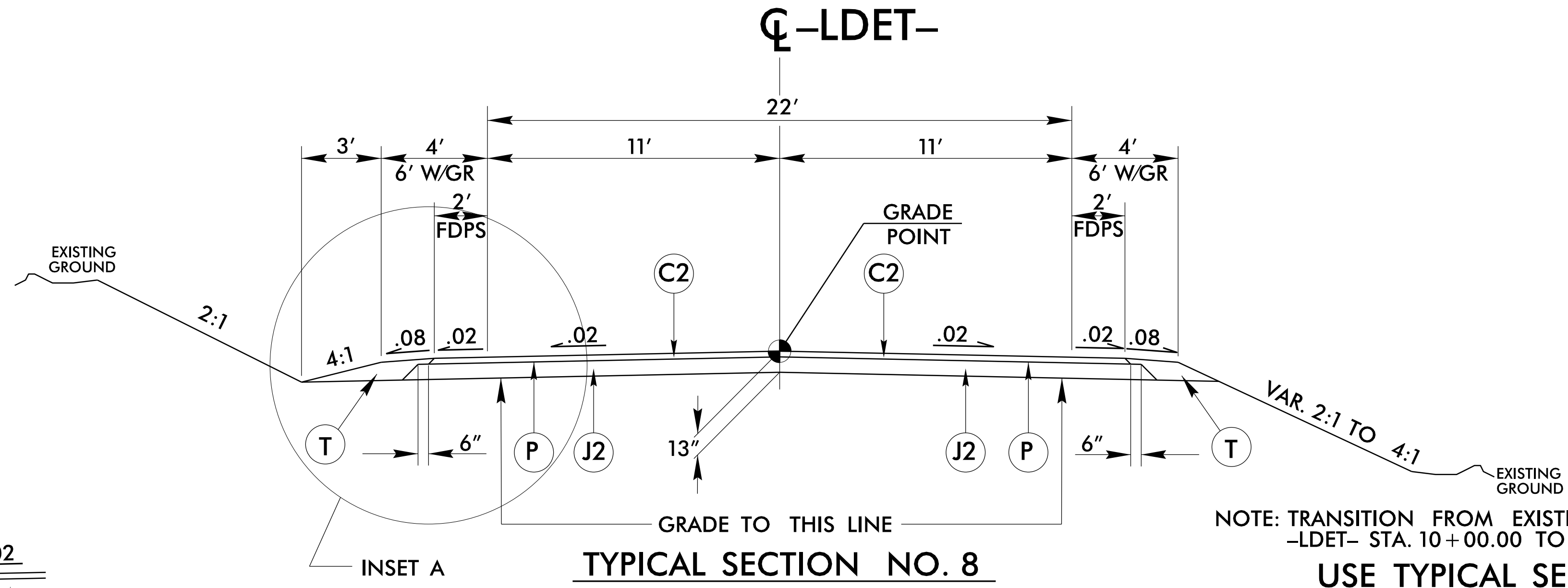


TYPICAL SECTION NO. 7

USE TYPICAL SECTION NO. 7:
 -DRV- STA. 9+76.32 TO STA. 11+40.00
 NOTE: DO NOT REMOVE EXISTING -L- PAVEMENT.

PAVEMENT SCHEDULE

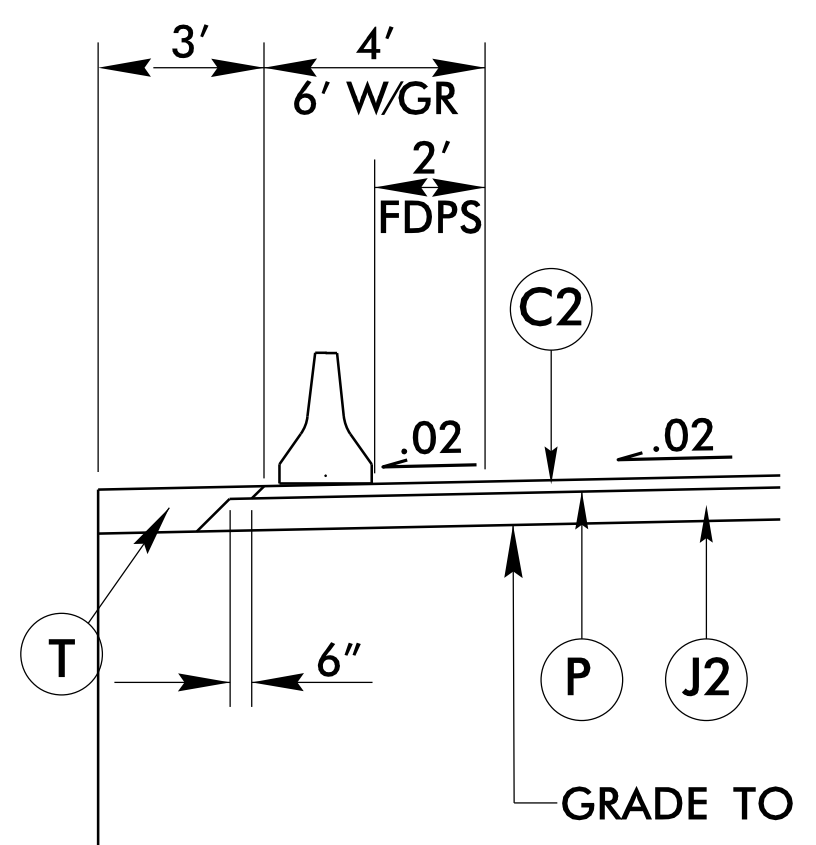
| | |
|----|---|
| A1 | 8" CONC THROUGH LANES |
| A2 | 8" CONC SHOULDERS |
| C1 | 1 1/2" S9.5B |
| C2 | 3" S9.5B |
| C3 | VAR. DEPTH S9.5B |
| D1 | 3" I19.0B |
| D2 | VAR. DEPTH I19.0B |
| E1 | 4" B25.0B |
| E2 | 5" B25.0B |
| E3 | VAR. DEPTH B25.0B |
| J1 | 8" ABC |
| J2 | 10" ABC |
| P | PRIME COAT |
| R1 | MODIFIED SHOULDER BERM GUTTER (SEE SHEET 2C-15) |
| R2 | SHOULDER BERM GUTTER |
| T | EARTH MATERIAL |
| U | EXIST PAVEMENT |
| W | WEDGING |



TYPICAL SECTION NO. 8

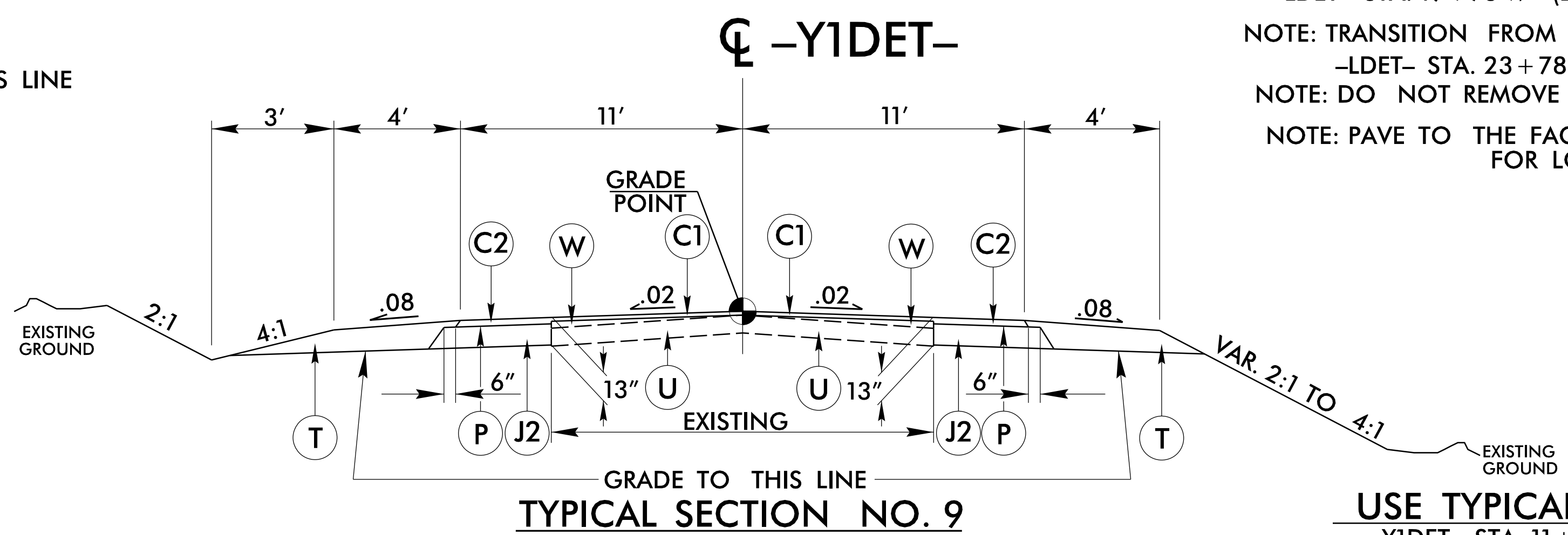
NOTE: TRANSITION FROM EXISTING TO TYPICAL SECTION NO. 8
 -LDET- STA. 10+00.00 TO STA. 11+11.74
USE TYPICAL SECTION NO. 8:
 -LDET- STA. 11+11.74 TO STA. 15+05 +/- (BEGIN BRIDGE)
 -LDET- STA. 17+65 +/- (END BRIDGE) TO STA. 18+90 +/- (BEGIN BRIDGE)
 -LDET- STA. 19+75 +/- (END BRIDGE) TO STA. 23+78.13

NOTE: TRANSITION FROM TYPICAL SECTION NO. 8 TO EXISTING
 -LDET- STA. 23+78.13 TO STA. 24+85.19
 NOTE: DO NOT REMOVE EXISTING -Y2- PAVEMENT.
 NOTE: PAVE TO THE FACE OF GUARDRAIL, SEE PLANS FOR LOCATIONS.



INSET A

-LDET- STA. 14+63 +/- TO STA. 15+08 +/-
 -LDET- STA. 17+62 +/- TO STA. 18+07 +/-
 -LDET- STA. 18+50 +/- TO STA. 18+95 +/-
 -L- STA. 19+57 +/- TO STA. 20+02 +/-



TYPICAL SECTION NO. 9

USE TYPICAL SECTION NO. 9:
 -Y1DET- STA. 11+20.00 TO STA. 11+94.41