

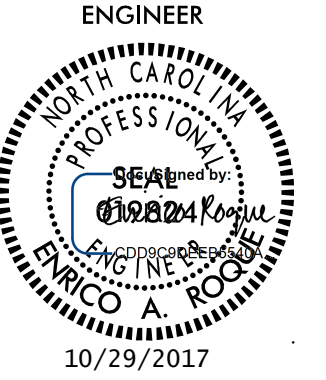
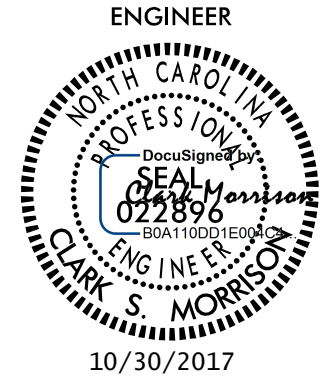
5/14/19

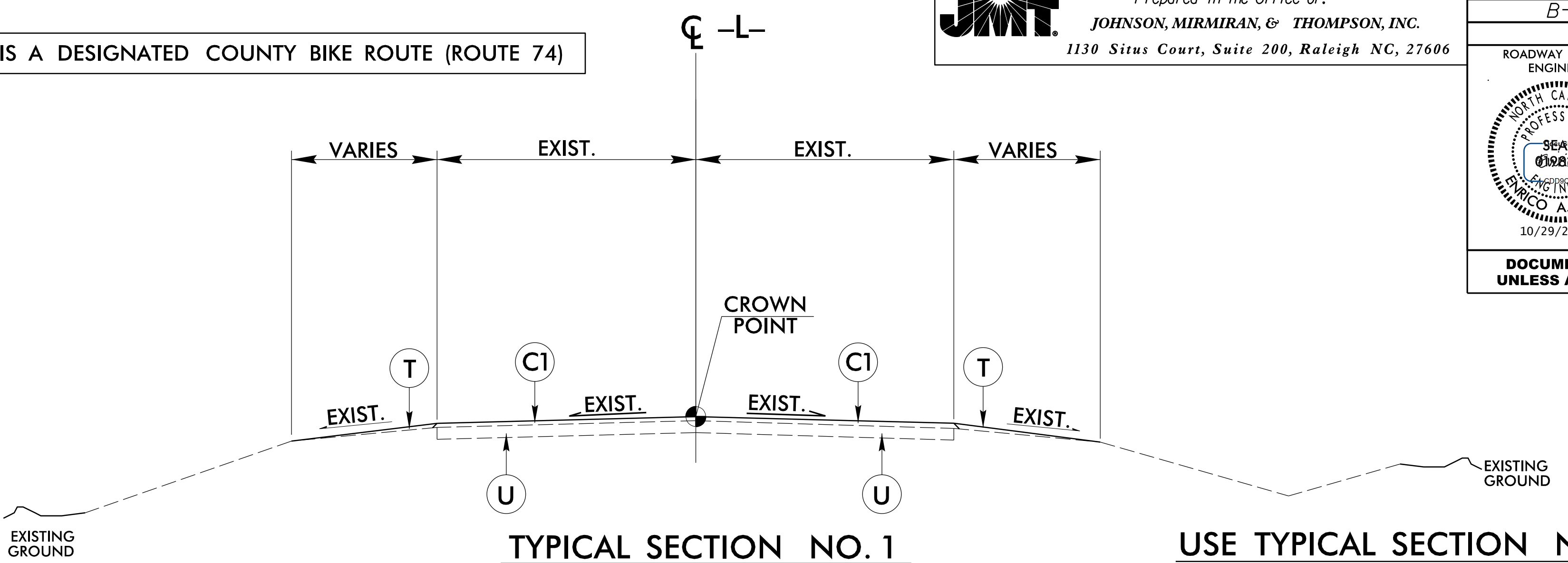
PAVEMENT SCHEDULE	
A1	8" PORTLAND CEMENT CONCRETE PAVEMENT, THROUGH LANES (JOINTED WITH DOWELS)
A2	CONCRETE SHOULDERS ADJACENT TO 8" PAVEMENT (JOINTED WITHOUT DOWELS)
C1	PROP. APPROX. 1 1/2" ASPHALT CONCRETE SURFACE COURSE, TYPE S9.5B, AT AN AVERAGE RATE OF 168 LBS. PER SQ. YD.
C2	PROP. APPROX. 3" ASPHALT CONCRETE SURFACE COURSE, TYPE S9.5B, AT AN AVERAGE RATE OF 168 LBS. PER SQ. YD. IN EACH OF TWO LAYERS.
C3	PROP. VAR. DEPTH ASPHALT CONCRETE SURFACE COURSE, TYPE S9.5B, AT AN AVERAGE RATE OF 112 LBS. PER SQ. YD. PER 1" DEPTH. TO BE PLACED IN LAYERS NOT TO EXCEED 2" IN DEPTH.
D1	PROP. APPROX. 3" ASPHALT CONCRETE INTERMEDIATE COURSE, TYPE I19.0B, AT AN AVERAGE RATE OF 342 LBS. PER SQ. YD.
D2	PROP. VAR. DEPTH ASPHALT CONCRETE INTERMEDIATE COURSE, TYPE I19.0B, AT AN AVERAGE RATE OF 114 LBS. PER SQ. YD. PER 1" DEPTH, TO BE PLACED IN LAYERS NOT LESS THAN 2 1/2" IN DEPTH OR GREATER THAN 4" IN DEPTH.
E1	PROP. APPROX. 4" ASPHALT CONCRETE BASE COURSE, TYPE B25.0B, AT AN AVERAGE RATE OF 456 LBS. PER SQ. YD.
E2	PROP. APPROX. 5" ASPHALT CONCRETE BASE COURSE, TYPE B25.0B, AT AN AVERAGE RATE OF 570 LBS. PER SQ. YD.
E3	PROP. VAR. DEPTH ASPHALT CONCRETE BASE COURSE, TYPE B25.0B, AT AN AVERAGE RATE OF 114 LBS. PER SQ. YD. PER 1" DEPTH. TO BE PLACED IN LAYERS NOT LESS THAN 3" IN DEPTH OR GREATER THAN 5 1/2" IN DEPTH.
J1	PROP 8" AGGREGATE BASE COURSE
J2	PROP 10" AGGREGATE BASE COURSE
P	PRIME COAT AT THE RATE OF .35 GAL. PER SQ. YD.
R1	MODIFIED SHOULDER BERM GUTTER (SEE SPECIAL DETAIL SHEET 2C-15)
R2	SHOULDER BERM GUTTER
T	EARTH MATERIAL.
U	EXISTING PAVEMENT.
W	VARIABLE DEPTH ASPHALT PAVEMENT (SEE STANDARD WEDGING DETAIL)

NOTE: PAVEMENT EDGE SLOPES ARE 1:1 UNLESS SHOWN OTHERWISE.

NOTE: NC 87 IS A DESIGNATED COUNTY BIKE ROUTE (ROUTE 74)

JMT. Prepared in the Office of:
JOHNSON, MIRMIRAN, & THOMPSON, INC.
 1130 Sitas Court, Suite 200, Raleigh NC, 27606

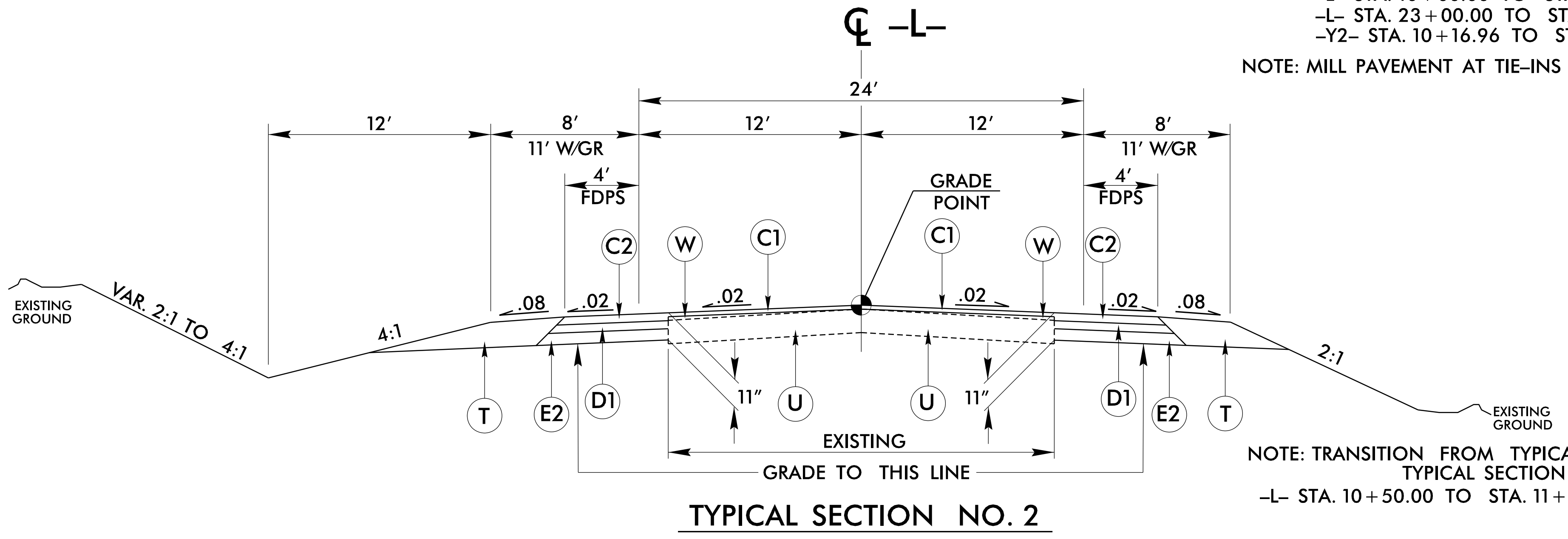
PROJECT REFERENCE NO. B-5239	SHEET NO. 2A-1
RW SHEET NO.	
ROADWAY DESIGN ENGINEER 	HYDRAULICS ENGINEER 
DOCUMENT NOT CONSIDERED FINAL UNLESS ALL SIGNATURES COMPLETED	



USE TYPICAL SECTION NO. 1:

- L- STA. 10+00.00 TO STA. 10+50.00
- L- STA. 23+00.00 TO STA. 24+85.00
- Y2- STA. 10+16.96 TO STA. 11+36.00

NOTE: MILL PAVEMENT AT TIE-INS (SEE DETAIL BELOW).



NOTE: TRANSITION FROM TYPICAL SECTION NO. 1 TO TYPICAL SECTION NO. 2

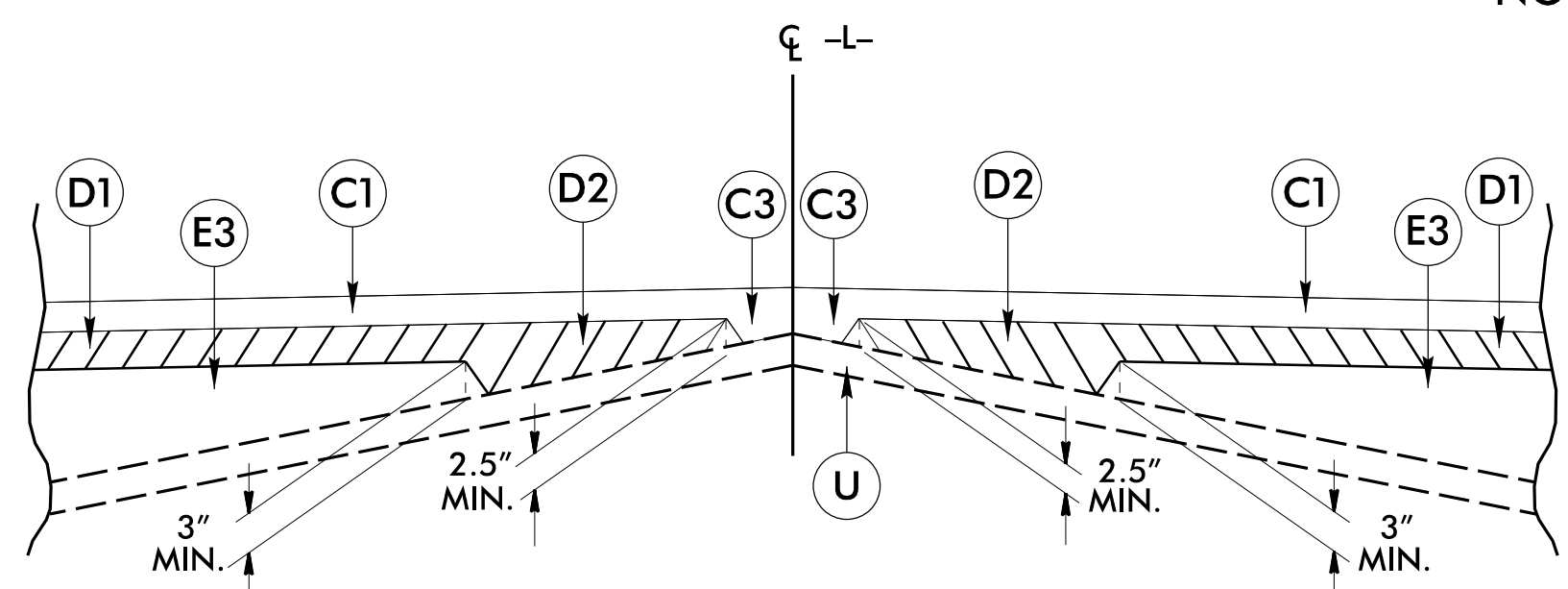
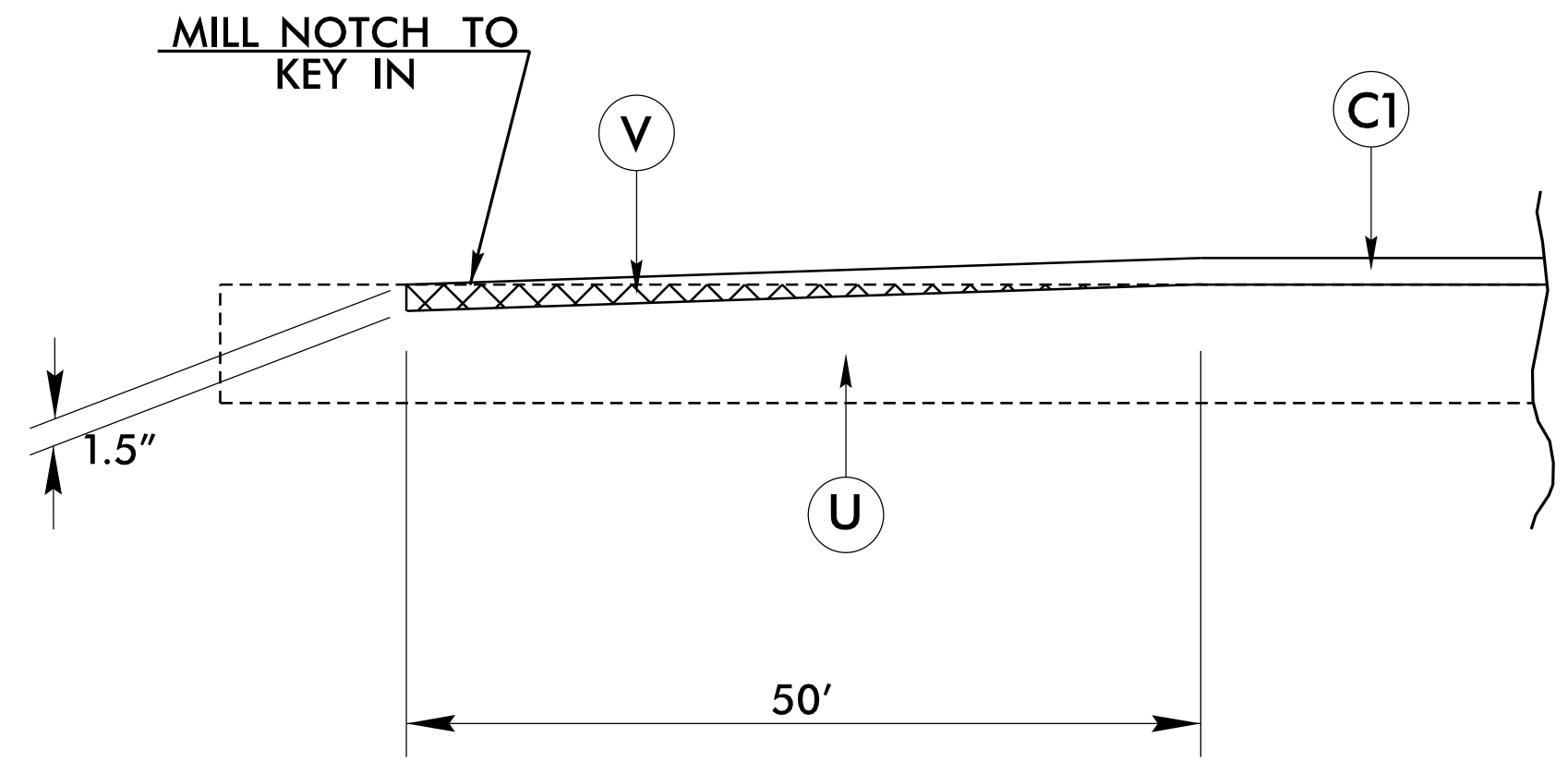
- L- STA. 10+50.00 TO STA. 11+00.00

USE TYPICAL SECTION NO. 2:

- L- STA. 11+00.00 TO STA. 11+75.00
- L- STA. 22+00.00 TO STA. 22+50.00
- L- STA. 22+50.00 TO STA. 23+00.00

NOTE: TRANSITION FROM TYPICAL SECTION NO. 2 TO TYPICAL SECTION NO. 1

NOTE: PAVE TO THE FACE OF GUARDRAIL, SEE PLANS FOR LOCATIONS.



10/16/2017 10:52:39 AM B5239_Rdy.tup.dgn