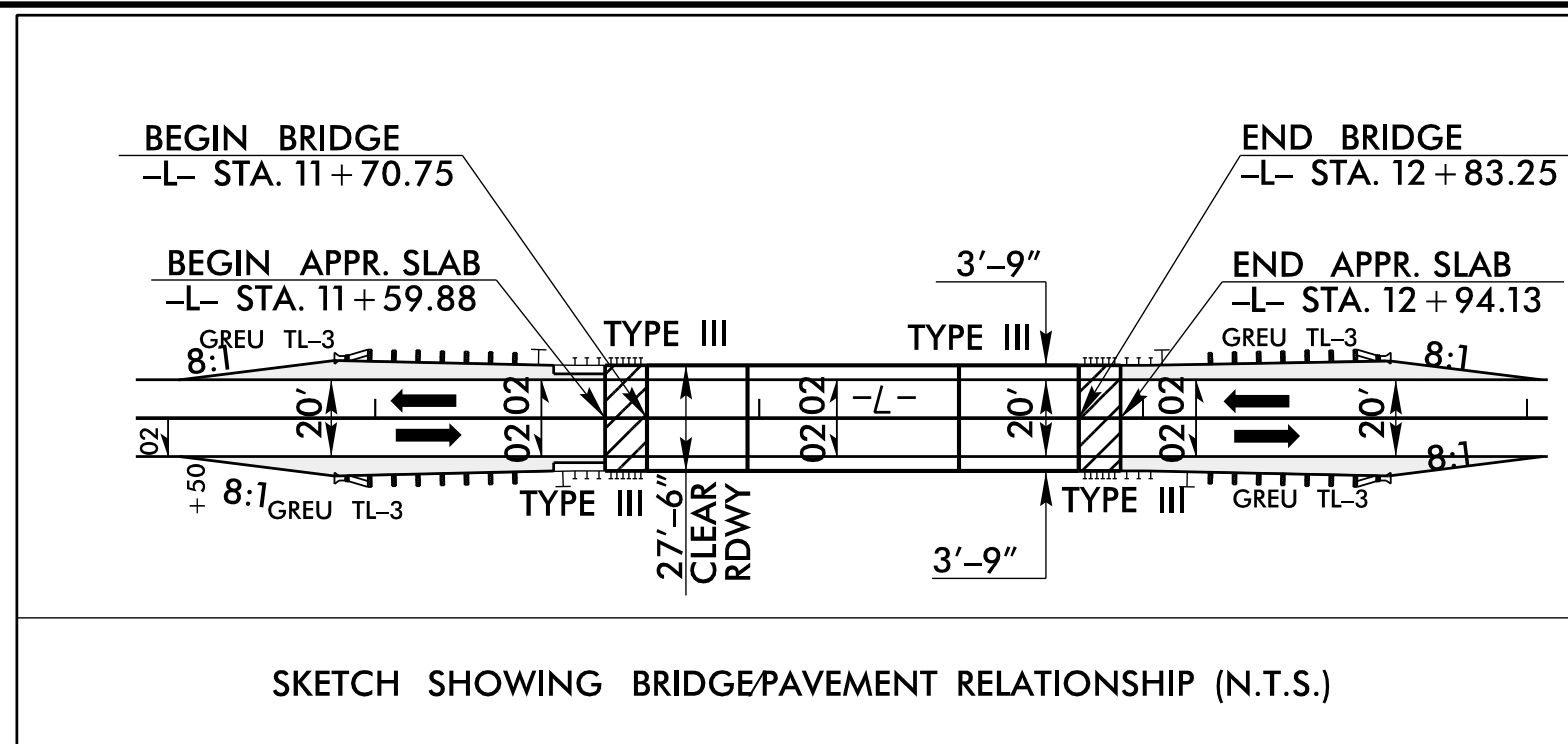


8.17/99



LOCHNER
 H. W. LOCHNER, INC.
 2840 PLAZA PLACE, SUITE 202
 RALEIGH, NC 27612
 (919) 571-7111

NC License Number F-0159

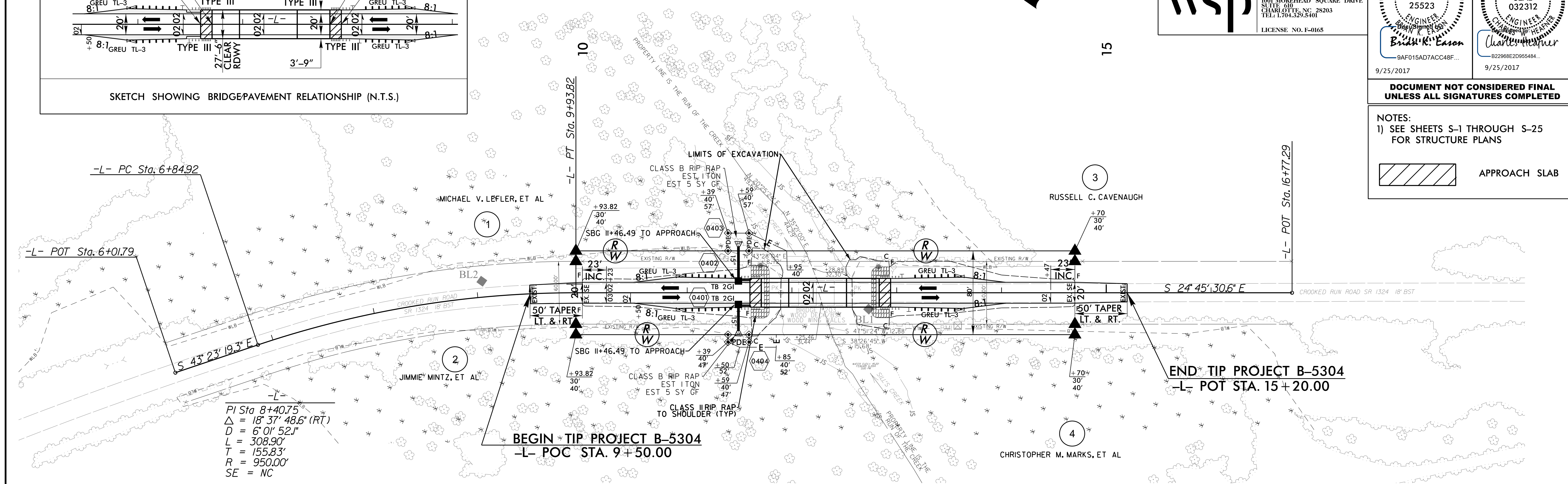
WSP
 WSP USA
 1001 MOREHEAD SQUARE DRIVE
 SUITE 600
 CHARLOTTE, NC 28203
 TEL: 1.704.329.5401
 LICENSE NO. F-0165

PROJECT REFERENCE NO. B-5304	SHEET NO. 4
ROADWAY DESIGN ENGINEER BRAD K. EASON SEAL 25523 9/25/2017	HYDRAULICS ENGINEER CHARLES HEARNER SEAL 032312 9/25/2017

DOCUMENT NOT CONSIDERED FINAL UNLESS ALL SIGNATURES COMPLETED

NOTES:
 1) SEE SHEETS S-1 THROUGH S-25 FOR STRUCTURE PLANS

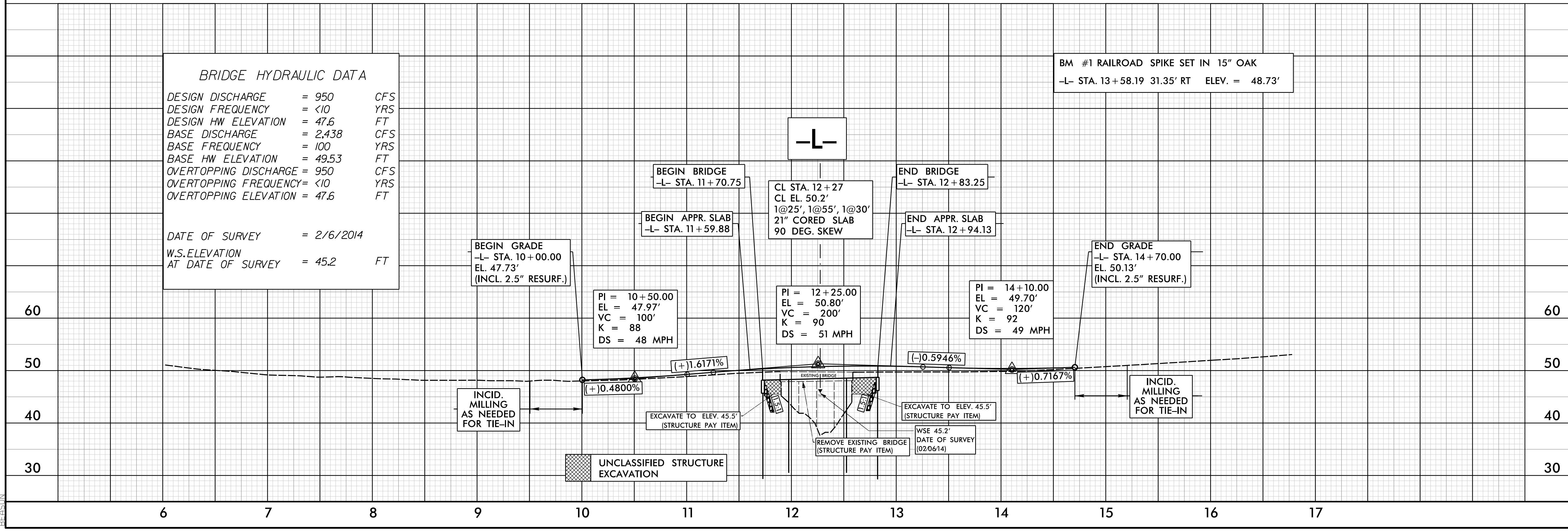
APPROACH SLAB



BRIDGE HYDRAULIC DATA

DESIGN DISCHARGE	= 950	CFS
DESIGN FREQUENCY	= <10	YRS
DESIGN HW ELEVATION	= 47.6	FT
BASE DISCHARGE	= 2,438	CFS
BASE FREQUENCY	= 100	YRS
BASE HW ELEVATION	= 49.53	FT
OVERTOPPING DISCHARGE	= 950	CFS
OVERTOPPING FREQUENCY	= <10	YRS
OVERTOPPING ELEVATION	= 47.6	FT
DATE OF SURVEY	= 2/6/2014	
W.S. ELEVATION AT DATE OF SURVEY	= 45.2	FT

BM #1 RAILROAD SPIKE SET IN 15" OAK
 -L- STA. 13+58.19 31.35' RT ELEV. = 48.73'



8/22/2017 8:36:41 AM PSH_04.dgn