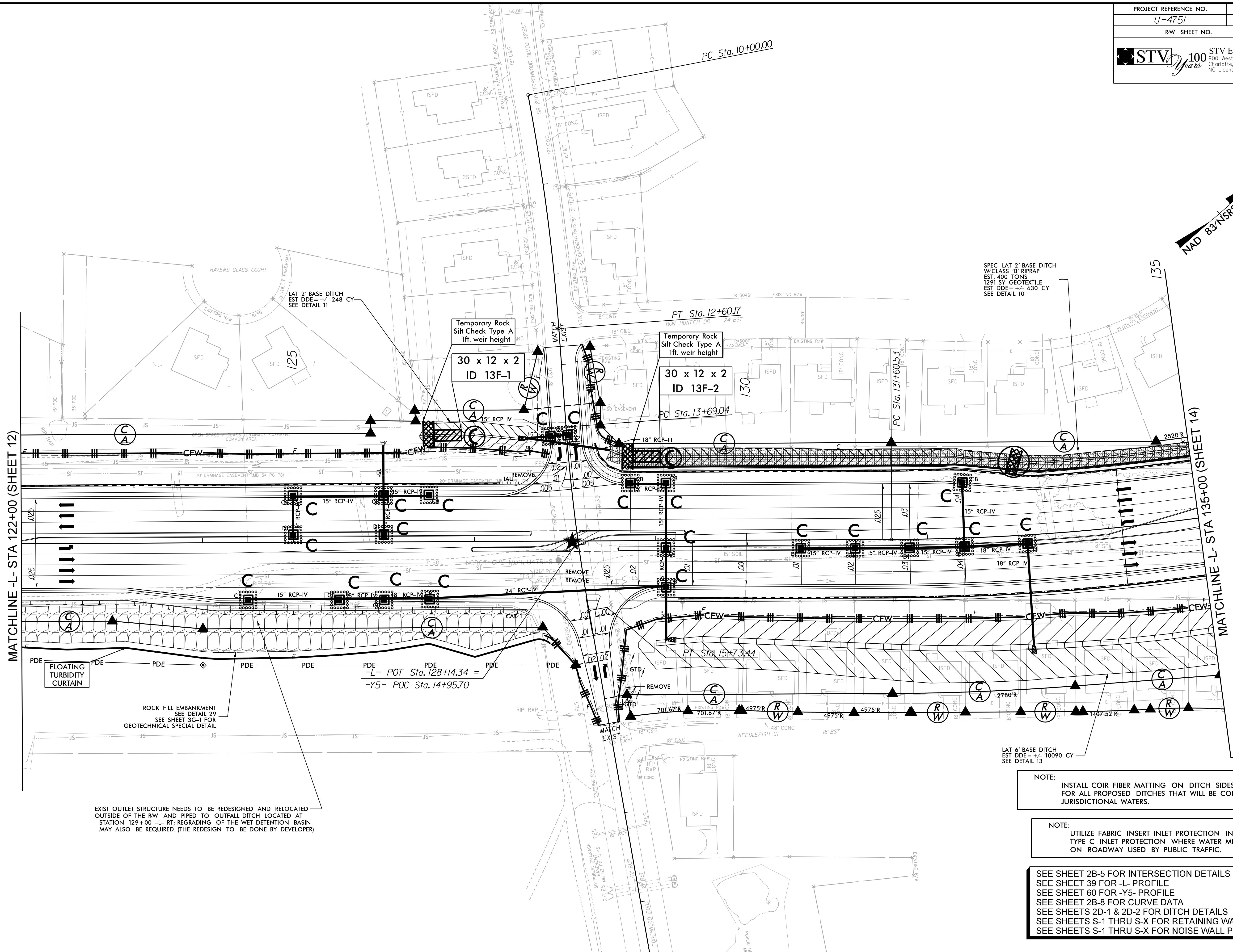


**This electronic collection of documents is provided
for the convenience of the user
and is Not a Certified Document –**

**The documents contained herein were originally issued
and sealed by the individuals whose names and license
numbers appear on each page, on the dates appearing
with their signature on that page.**

**This file or an individual page
shall not be considered a certified document.**

NAD 83/NSRS 2007



MATCHLINE -L- STA 122+00 (SHEET 12)

MATCHLINE -L- STA 135+00 (SHEET 14)

FLOATING TURBIDITY CURTAIN

ROCK FILL EMBANKMENT
SEE DETAIL 29
SEE SHEET 3G-1 FOR
GEOTECHNICAL SPECIAL DETAIL

EXIST OUTLET STRUCTURE NEEDS TO BE REDESIGNED AND RELOCATED
OUTSIDE OF THE RW AND PIPED TO OUTFALL DITCH LOCATED AT
STATION 129+00 -L- RT; REGRADING OF THE WET DETENTION BASIN
MAY ALSO BE REQUIRED. (THE REDESIGN TO BE DONE BY DESIGNER)

SPEC LAT 2' BASE DITCH
W/CLASS 'B' RIPRAP
EST. 400 TONS
1291 SY GEOTEXTILE
EST DDE = +/- 630 CY
SEE DETAIL 10

LAT 6' BASE DITCH
EST DDE = +/- 10090 CY
SEE DETAIL 13

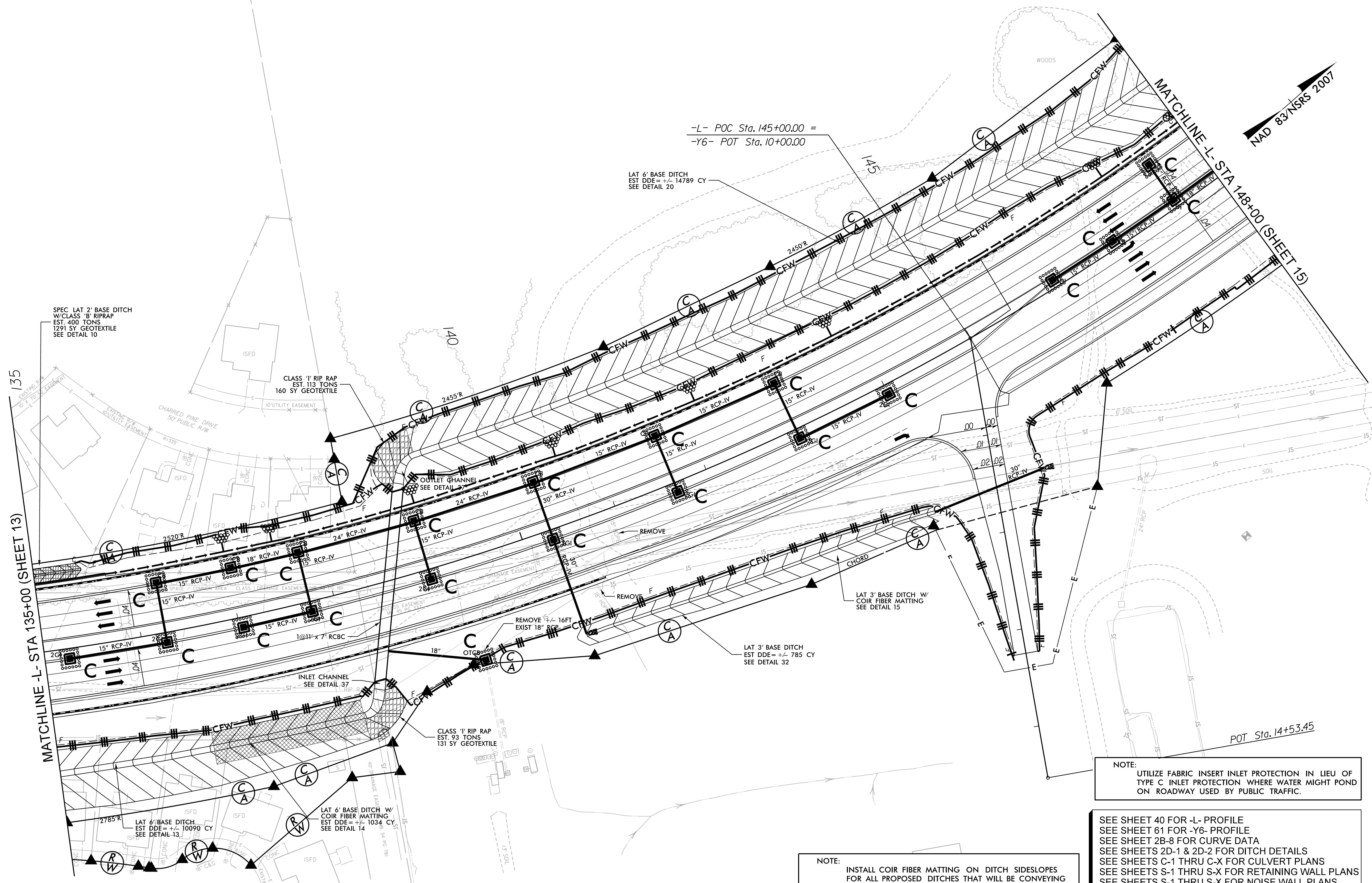
NOTE:
INSTALL COIR FIBER MATTING ON DITCH SIDESLOPES
FOR ALL PROPOSED DITCHES THAT WILL BE CONVEYING
JURISDICTIONAL WATERS.

NOTE:
UTILIZE FABRIC INSERT INLET PROTECTION IN LIEU OF
TYPE C INLET PROTECTION WHERE WATER MIGHT POND
ON ROADWAY USED BY PUBLIC TRAFFIC.

SEE SHEET 2B-5 FOR INTERSECTION DETAILS
SEE SHEET 39 FOR -L- PROFILE
SEE SHEET 60 FOR -Y5- PROFILE
SEE SHEET 2B-8 FOR CURVE DATA
SEE SHEETS 2D-1 & 2D-2 FOR DITCH DETAILS
SEE SHEETS S-1 THRU S-X FOR RETAINING WALL PLANS
SEE SHEETS S-1 THRU S-X FOR NOISE WALL PLANS

6/2/2017
R:\Environmental\Design\U4751\EC_psh42.dgn
PUSHING

DB 4889 PG 3128
MB 48 PG 180



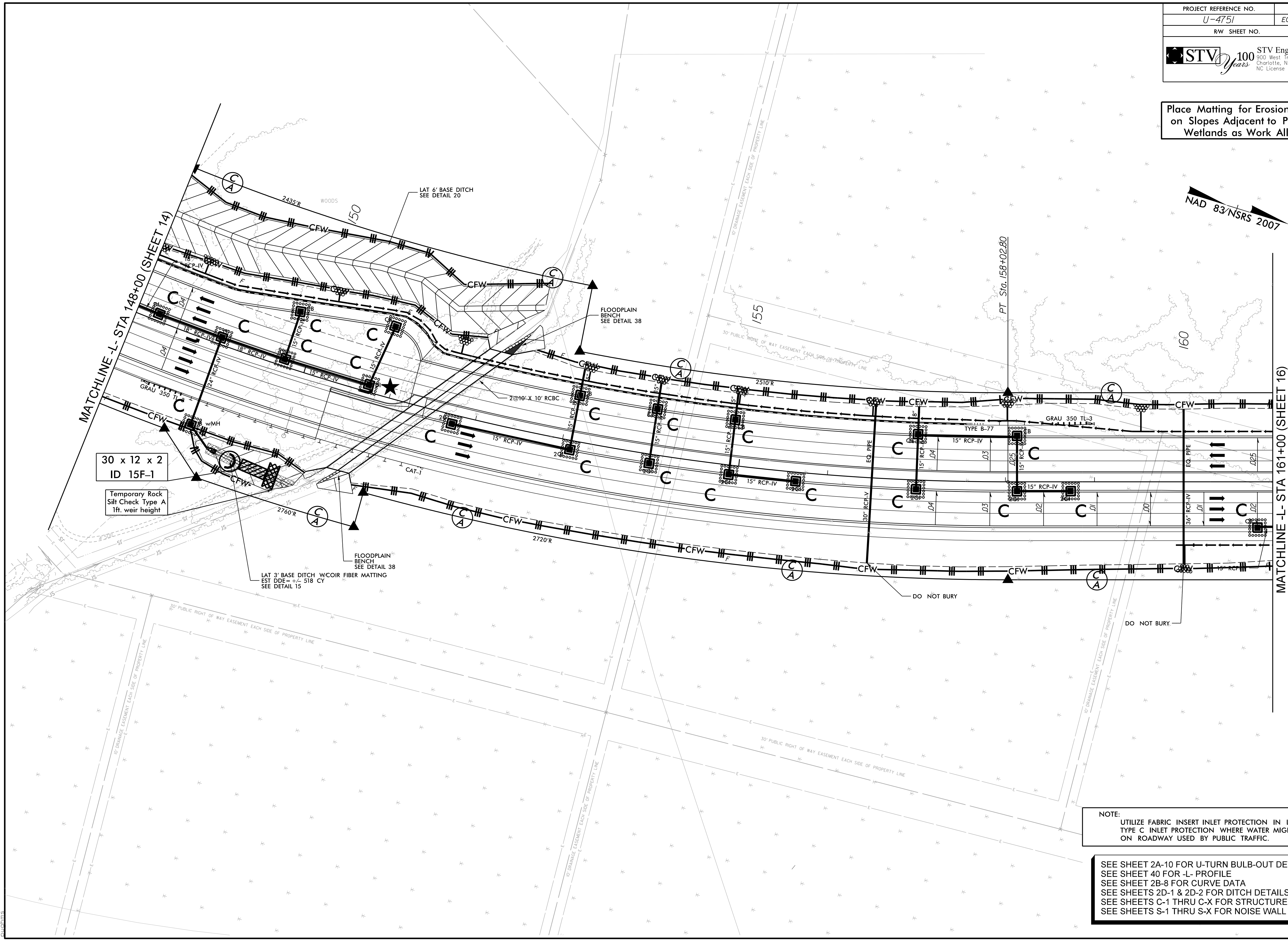
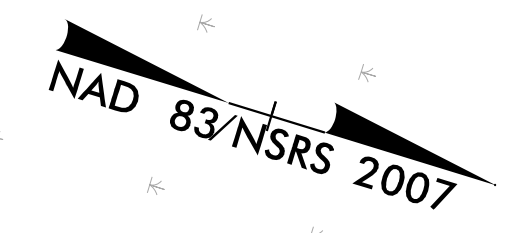
NOTE:
UTILIZE FABRIC INSERT INLET PROTECTION IN LIEU OF TYPE C INLET PROTECTION WHERE WATER MIGHT POND ON ROADWAY USED BY PUBLIC TRAFFIC.

SEE SHEET 40 FOR -L- PROFILE
SEE SHEET 61 FOR -Y6- PROFILE
SEE SHEET 2B-8 FOR CURVE DATA
SEE SHEETS 2D-1 & 2D-2 FOR DITCH DETAILS
SEE SHEETS C-1 THRU C-X FOR CULVERT PLANS
SEE SHEETS S-1 THRU S-X FOR RETAINING WALL PLANS
SEE SHEETS S-1 THRU S-X FOR NOISE WALL PLANS

NOTE:
INSTALL COIR FIBER MATTING ON DITCH SIDESLOPES FOR ALL PROPOSED DITCHES THAT WILL BE CONVEYING JURISDICTIONAL WATERS.

6/2/2017
R:\Environmental\Design\U4751_EC_psh43.dgn
P:\chims

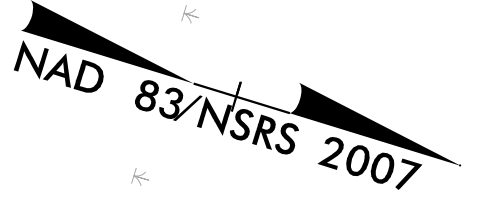
Place Matting for Erosion Control on Slopes Adjacent to Permitted Wetlands as Work Allows.



NOTE:
 UTILIZE FABRIC INSERT INLET PROTECTION IN LIEU OF TYPE C INLET PROTECTION WHERE WATER MIGHT POND ON ROADWAY USED BY PUBLIC TRAFFIC.

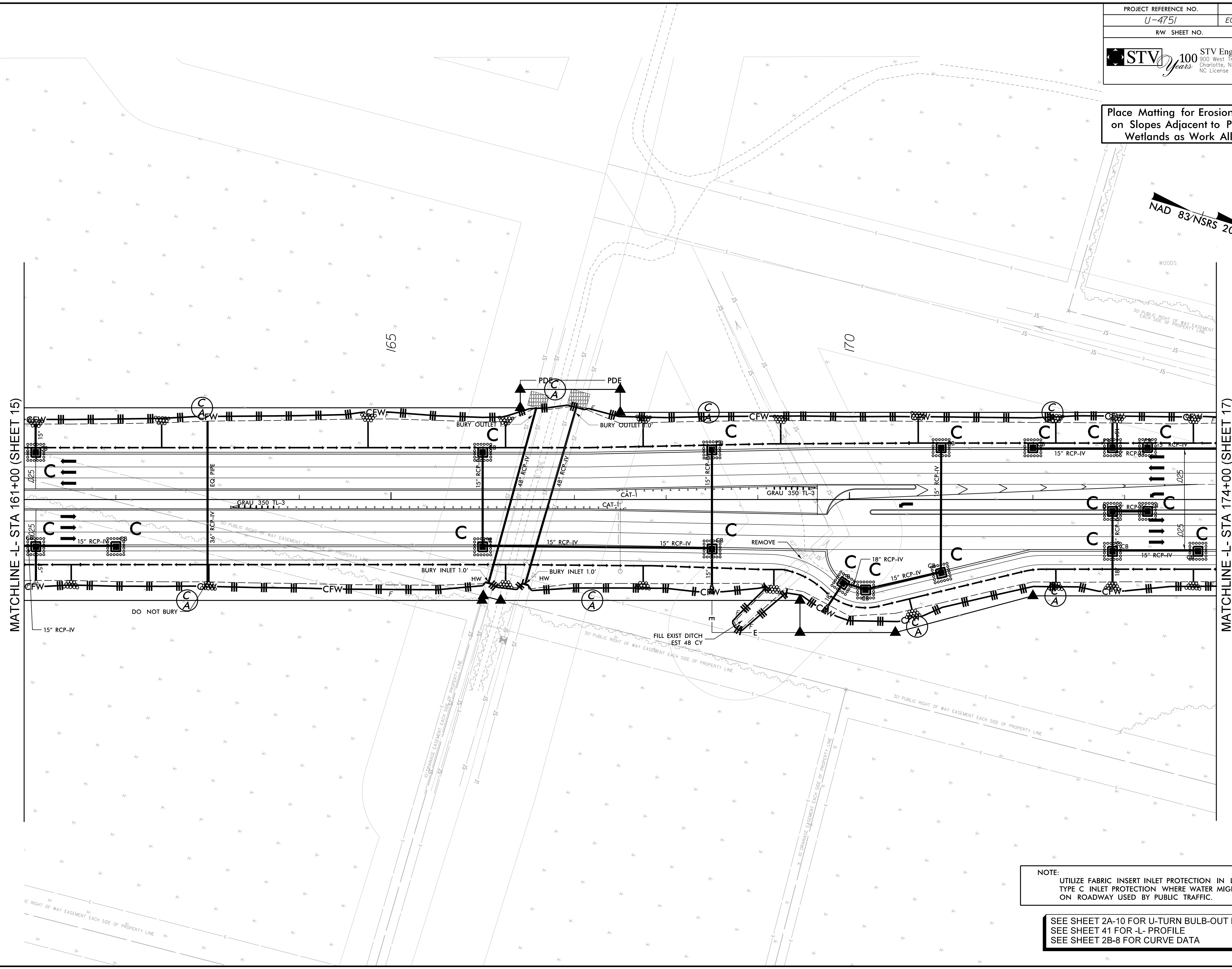
SEE SHEET 2A-10 FOR U-TURN BULB-OUT DETAIL
 SEE SHEET 40 FOR -L- PROFILE
 SEE SHEET 2B-8 FOR CURVE DATA
 SEE SHEETS 2D-1 & 2D-2 FOR DITCH DETAILS
 SEE SHEETS C-1 THRU C-X FOR STRUCTURE PLANS
 SEE SHEETS S-1 THRU S-X FOR NOISE WALL PLANS

Place Matting for Erosion Control on Slopes Adjacent to Permitted Wetlands as Work Allows.



MATCHLINE -L- STA 161+00 (SHEET 15)

MATCHLINE -L- STA 174+00 (SHEET 17)

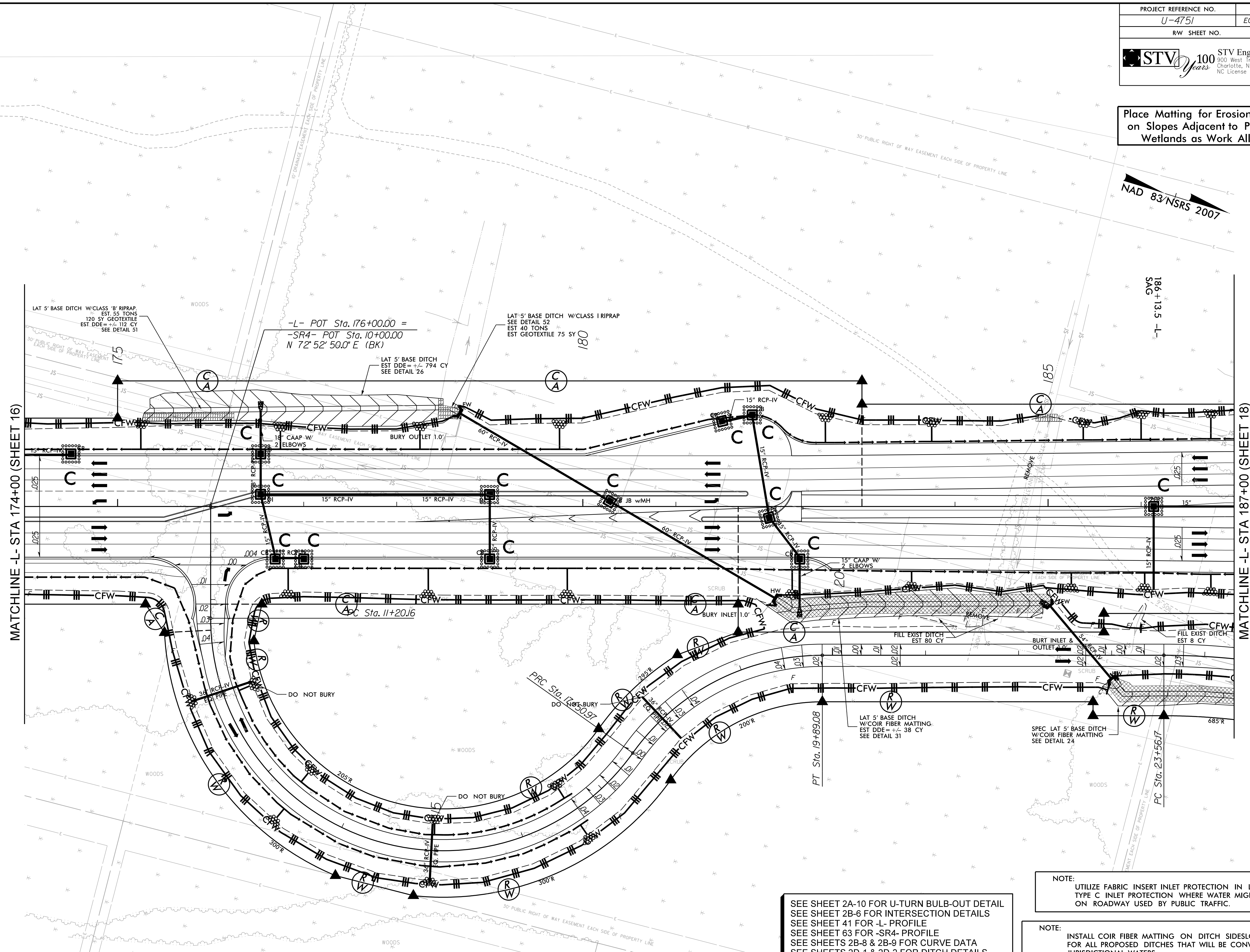


NOTE:
 UTILIZE FABRIC INSERT INLET PROTECTION IN LIEU OF TYPE C INLET PROTECTION WHERE WATER MIGHT POND ON ROADWAY USED BY PUBLIC TRAFFIC.

SEE SHEET 2A-10 FOR U-TURN BULB-OUT DETAIL
 SEE SHEET 41 FOR -L- PROFILE
 SEE SHEET 2B-8 FOR CURVE DATA

Place Matting for Erosion Control on Slopes Adjacent to Permitted Wetlands as Work Allows.

NAD 83/NSRS 2007



MATCHLINE -L- STA 174+00 (SHEET 16)

MATCHLINE -L- STA 187+00 (SHEET 18)

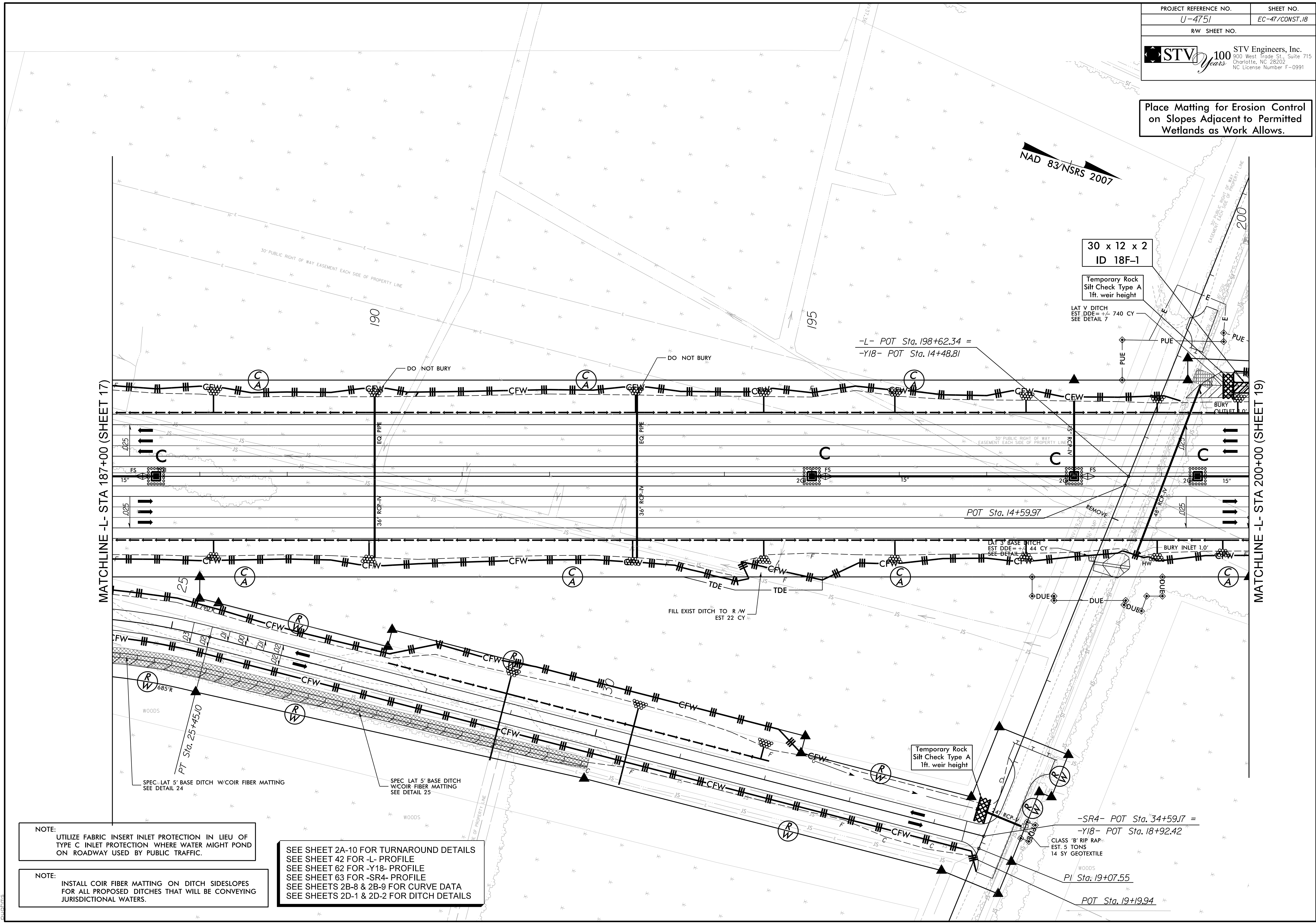
SEE SHEET 2A-10 FOR U-TURN BULB-OUT DETAIL
 SEE SHEET 2B-6 FOR INTERSECTION DETAILS
 SEE SHEET 41 FOR -L- PROFILE
 SEE SHEET 63 FOR -SR4- PROFILE
 SEE SHEETS 2B-8 & 2B-9 FOR CURVE DATA
 SEE SHEETS 2D-1 & 2D-2 FOR DITCH DETAILS

NOTE:
 UTILIZE FABRIC INSERT INLET PROTECTION IN LIEU OF TYPE C INLET PROTECTION WHERE WATER MIGHT POND ON ROADWAY USED BY PUBLIC TRAFFIC.

NOTE:
 INSTALL COIR FIBER MATTING ON DITCH SIDESLOPES FOR ALL PROPOSED DITCHES THAT WILL BE CONVEYING JURISDICTIONAL WATERS.

Place Matting for Erosion Control on Slopes Adjacent to Permitted Wetlands as Work Allows.

NAD 83/NSRS 2007



MATCHLINE -L- STA 187+00 (SHEET 17)

MATCHLINE -L- STA 200+00 (SHEET 19)

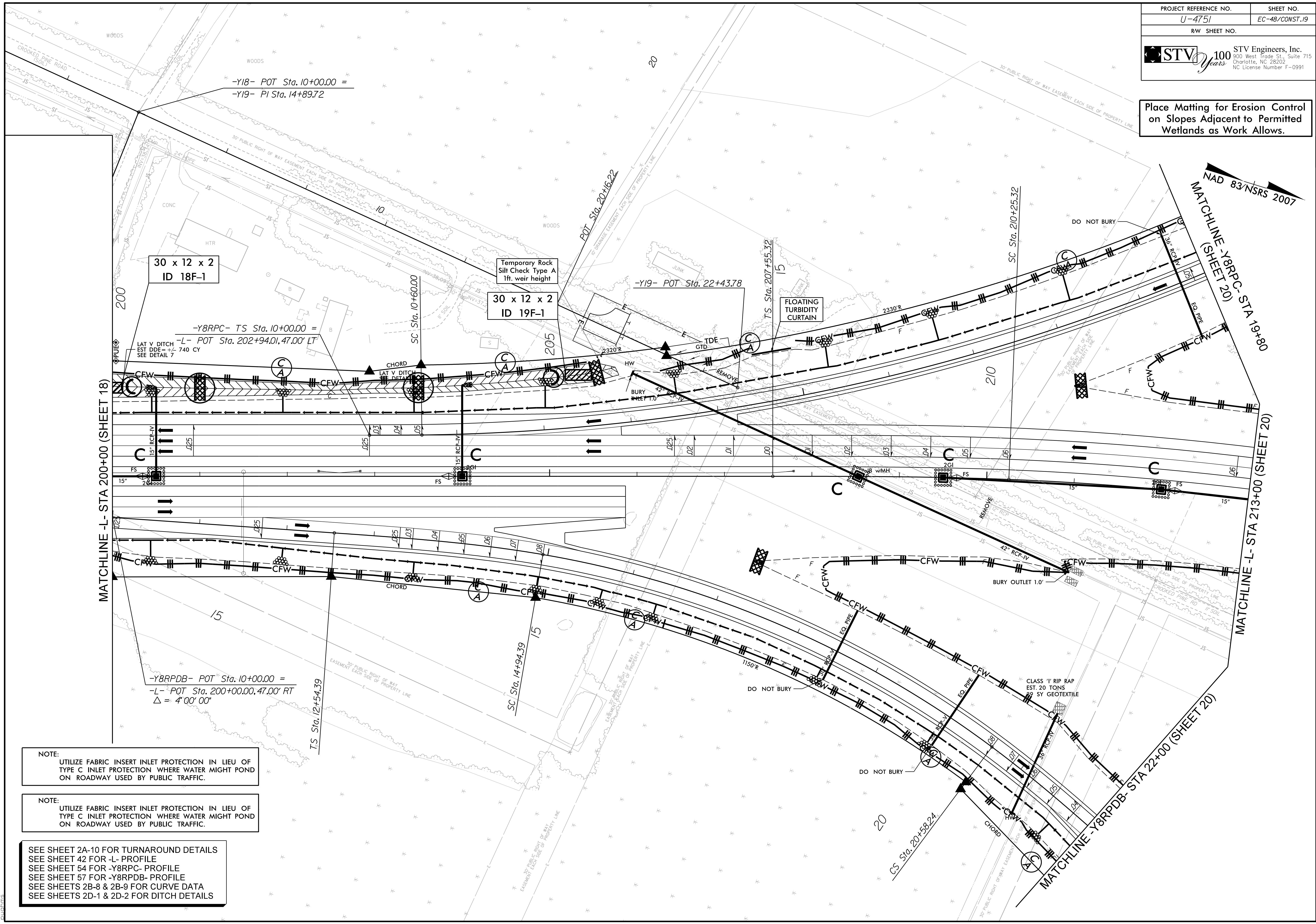
NOTE:
 UTILIZE FABRIC INSERT INLET PROTECTION IN LIEU OF TYPE C INLET PROTECTION WHERE WATER MIGHT POND ON ROADWAY USED BY PUBLIC TRAFFIC.

NOTE:
 INSTALL COIR FIBER MATTING ON DITCH SIDESLOPES FOR ALL PROPOSED DITCHES THAT WILL BE CONVEYING JURISDICTIONAL WATERS.

SEE SHEET 2A-10 FOR TURNAROUND DETAILS
 SEE SHEET 42 FOR -L- PROFILE
 SEE SHEET 62 FOR -Y18- PROFILE
 SEE SHEET 63 FOR -SR4- PROFILE
 SEE SHEETS 2B-8 & 2B-9 FOR CURVE DATA
 SEE SHEETS 2D-1 & 2D-2 FOR DITCH DETAILS

6/2/2017
 R:\Environmental\Design\U4751\EC_psh47.dgn
 P:\Projects\U4751\EC_psh47.dgn

Place Matting for Erosion Control on Slopes Adjacent to Permitted Wetlands as Work Allows.

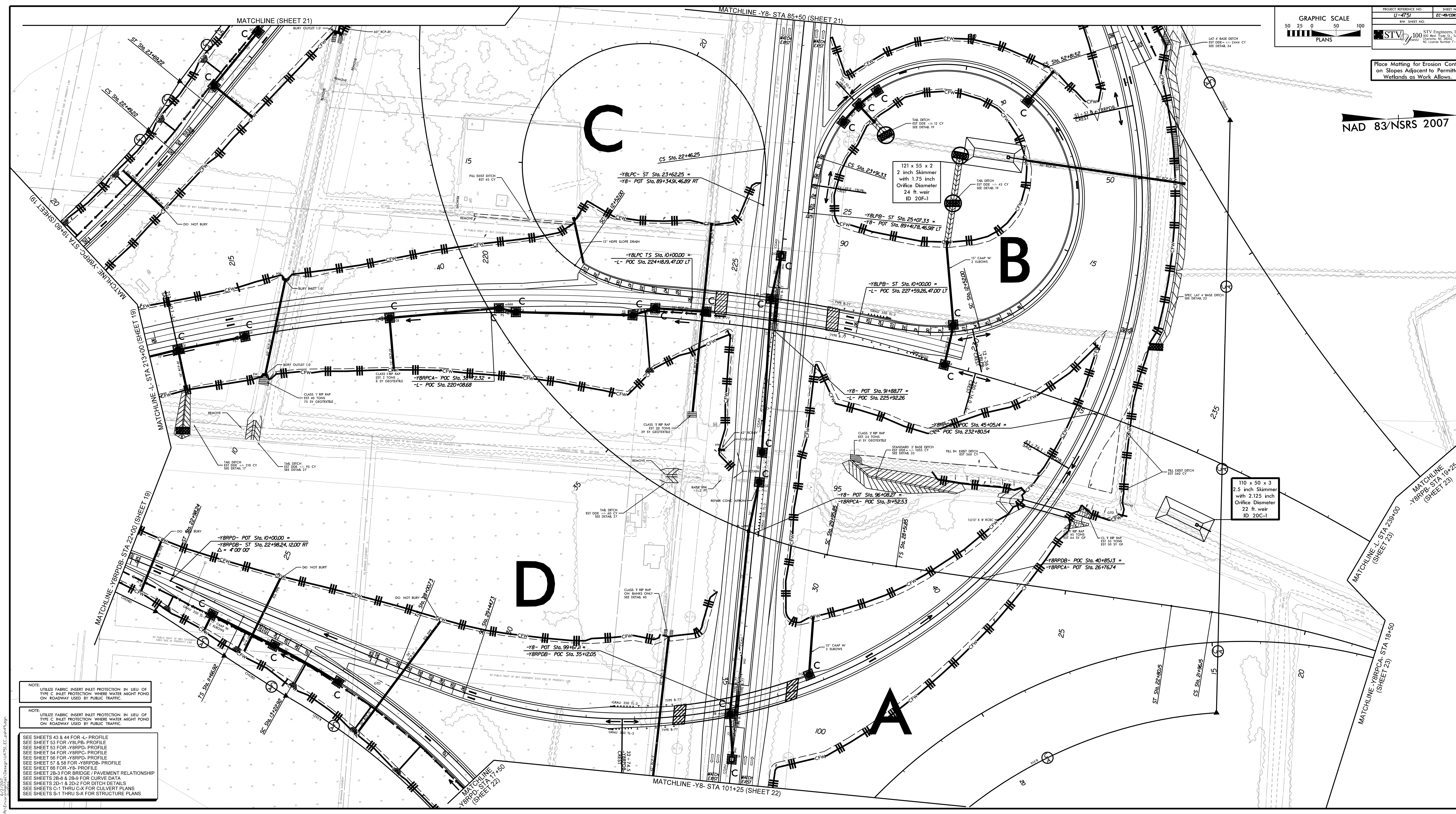


NOTE:
UTILIZE FABRIC INSERT INLET PROTECTION IN LIEU OF TYPE C INLET PROTECTION WHERE WATER MIGHT POND ON ROADWAY USED BY PUBLIC TRAFFIC.

NOTE:
UTILIZE FABRIC INSERT INLET PROTECTION IN LIEU OF TYPE C INLET PROTECTION WHERE WATER MIGHT POND ON ROADWAY USED BY PUBLIC TRAFFIC.

SEE SHEET 2A-10 FOR TURNAROUND DETAILS
 SEE SHEET 42 FOR -L- PROFILE
 SEE SHEET 54 FOR -Y8RPC- PROFILE
 SEE SHEET 57 FOR -Y8RPDB- PROFILE
 SEE SHEETS 2B-8 & 2B-9 FOR CURVE DATA
 SEE SHEETS 2D-1 & 2D-2 FOR DITCH DETAILS

6/2/2017
 R:\Environmental\Design\U4751\EC_psh48.dgn
 P:\chims



PROJECT REFERENCE NO. U-4751
 SHEET NO. EC-48/0101ST.02
 REV. SHEET NO.
 GRAPHIC SCALE
 50 25 0 50 100
 PLANS
 STV
 STV Engineers, Inc.
 100 West Cape St., Suite 715
 Durham, NC 27707-1099
 Place Matting for Erosion Control on Slopes Adjacent to Permitted Wetlands as Work Allows.

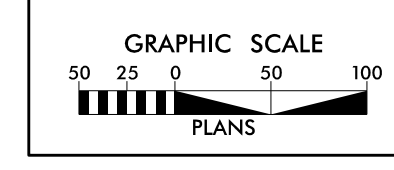
NAD 83/NSRS 2007

NOTE: UTILIZE FABRIC INSERT INLET PROTECTION IN LIEU OF TYPE C INLET PROTECTION WHERE WATER MIGHT FLOOD ON ROADWAY USED BY PUBLIC TRAFFIC.

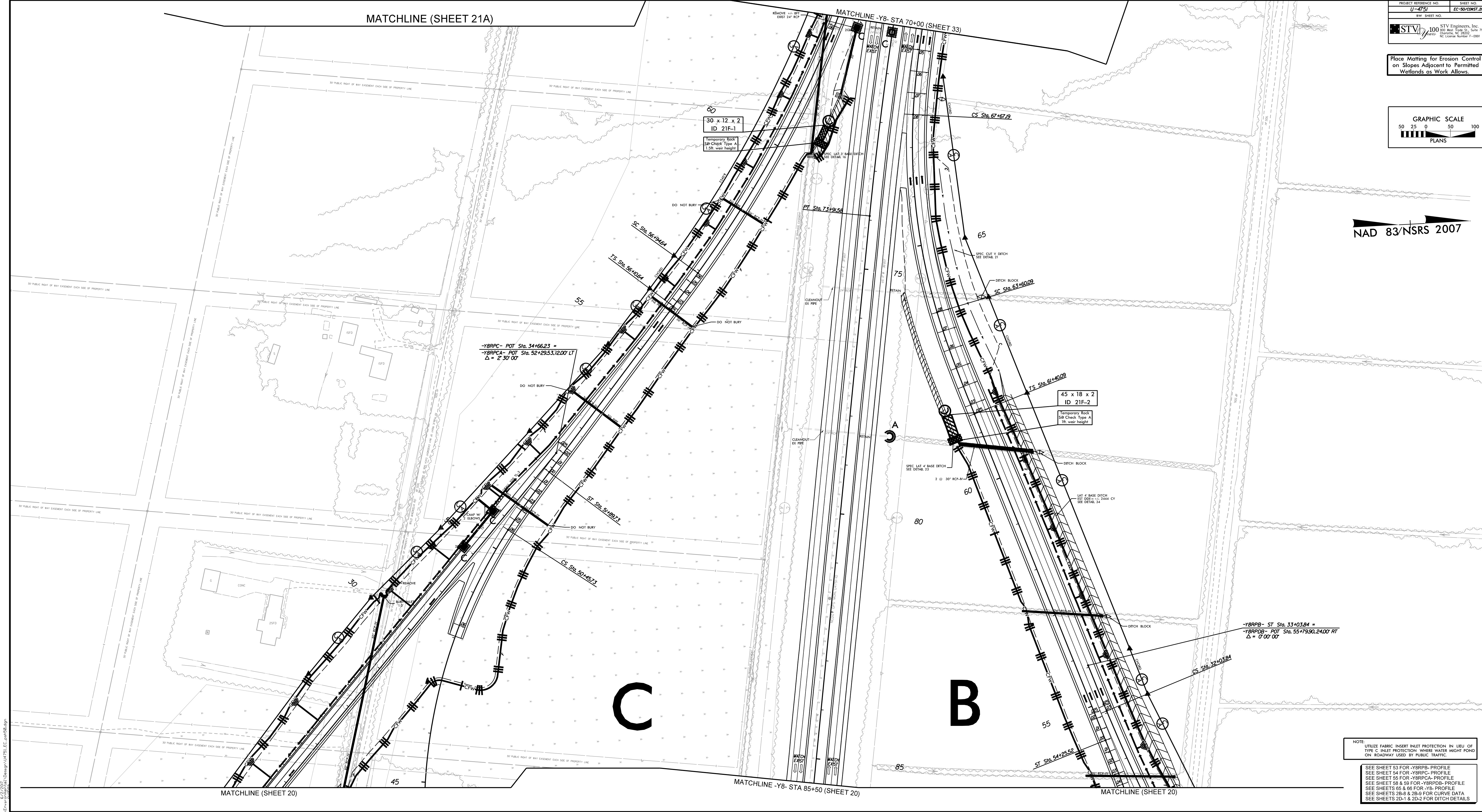
NOTE: UTILIZE FABRIC INSERT INLET PROTECTION IN LIEU OF TYPE C INLET PROTECTION WHERE WATER MIGHT FLOOD ON ROADWAY USED BY PUBLIC TRAFFIC.

SEE SHEETS 43 & 44 FOR 4'- PROFILE
 SEE SHEET 53 FOR -YBLPB- PROFILE
 SEE SHEET 53 FOR -YBRPD- PROFILE
 SEE SHEET 54 FOR -YBRPC- PROFILE
 SEE SHEET 56 FOR -YBRPD- PROFILE
 SEE SHEET 57 & 58 FOR -YBRPB- PROFILE
 SEE SHEET 66 FOR -YB- PROFILE
 SEE SHEET 25-3 FOR BRIDGE/PAVEMENT RELATIONSHIP
 SEE SHEETS 28-5 & 28-9 FOR CURVE DATA
 SEE SHEETS 20-1 & 20-2 FOR DITCH DETAILS
 SEE SHEETS C-1 THRU C-X FOR CULVERT PLANS
 SEE SHEETS S-1 THRU S-X FOR STRUCTURE PLANS

Place Matting for Erosion Control on Slopes Adjacent to Permitted Wetlands as Work Allows.



NAD 83/NSRS 2007

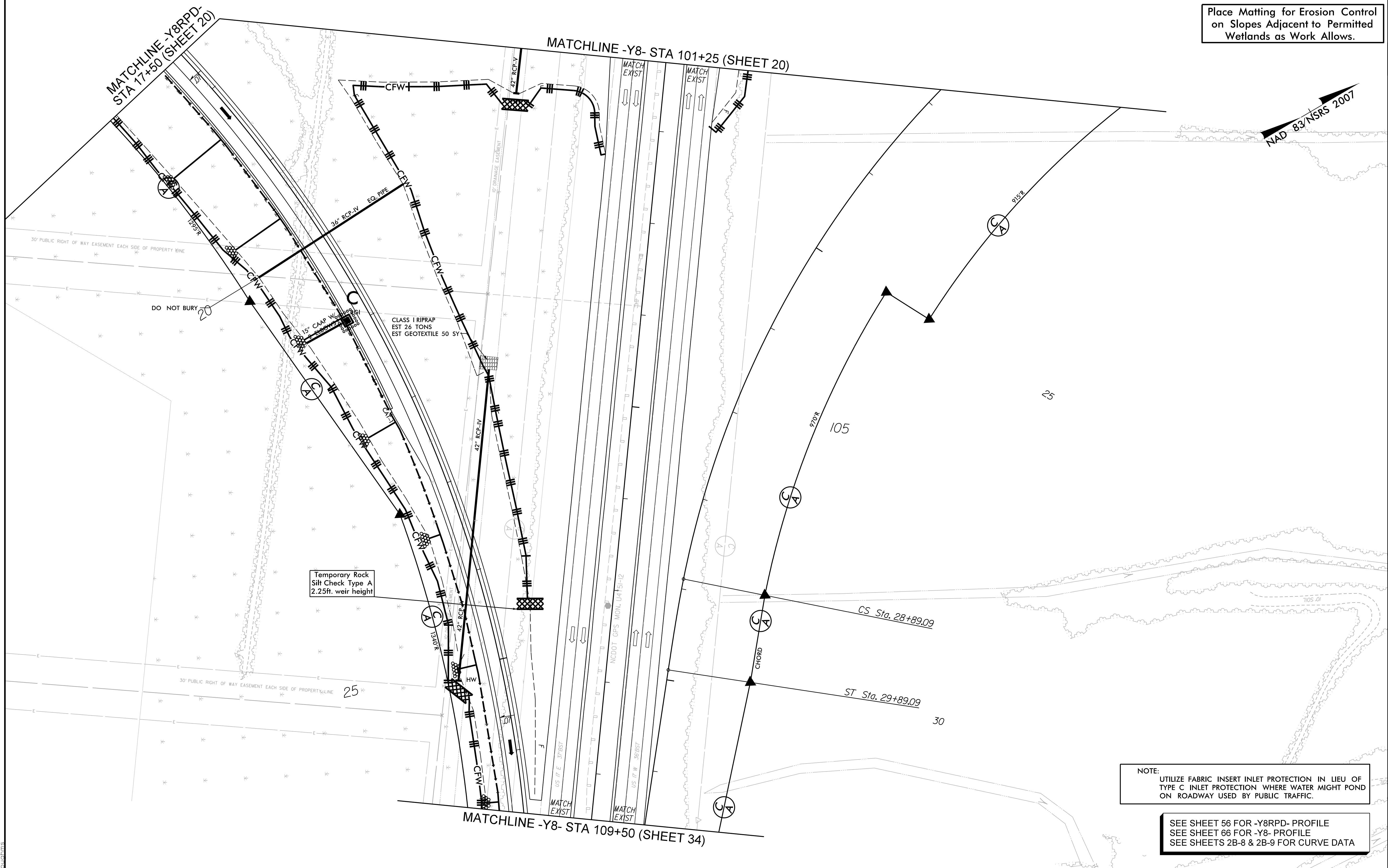
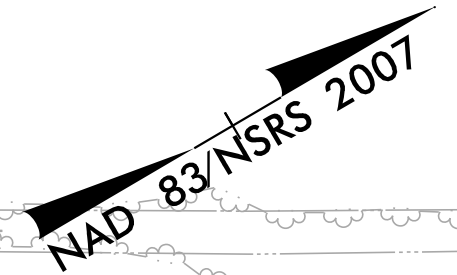


NOTE
 UTILIZE FABRIC INSERT INLET PROTECTION IN LIEU OF TYPE C INLET PROTECTION WHERE WATER MIGHT POND ON ROADWAY USED BY PUBLIC TRAFFIC.

SEE SHEET 53 FOR -YBRPB- PROFILE
 SEE SHEET 54 FOR -YBRPC- PROFILE
 SEE SHEET 55 FOR -YBRPCA- PROFILE
 SEE SHEET 56 & 56 FOR -YBRPDB- PROFILE
 SEE SHEETS 65 & 66 FOR -YB- PROFILE
 SEE SHEETS 2B-8 & 2B-9 FOR CURVE DATA
 SEE SHEETS 2D-1 & 2D-2 FOR DITCH DETAILS

6/2/2024 10:48 AM C:\projects\U-4751\Drawings\U-4751_EC-30\20WST-2.dwg
 User: jharrington

Place Matting for Erosion Control on Slopes Adjacent to Permitted Wetlands as Work Allows.



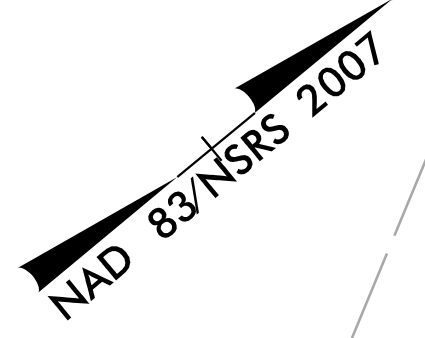
Temporary Rock Silt Check Type A
2.25ft. weir height

CLASS I RIPRAP
EST 26 TONS
EST GEOTEXTILE 50 SY

NOTE:
UTILIZE FABRIC INSERT INLET PROTECTION IN LIEU OF TYPE C INLET PROTECTION WHERE WATER MIGHT POND ON ROADWAY USED BY PUBLIC TRAFFIC.

SEE SHEET 56 FOR -Y8RPD- PROFILE
SEE SHEET 66 FOR -Y8- PROFILE
SEE SHEETS 2B-8 & 2B-9 FOR CURVE DATA

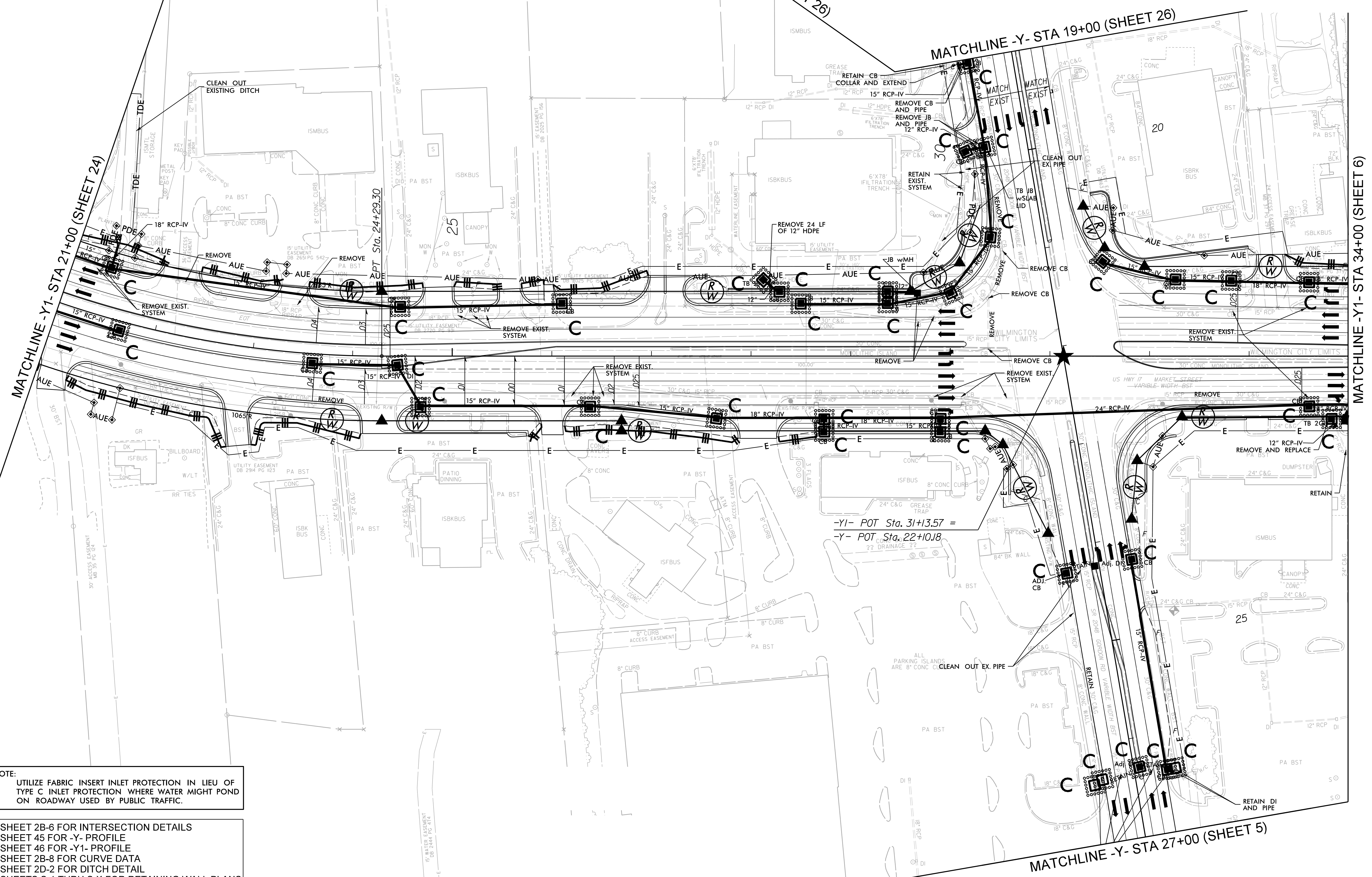
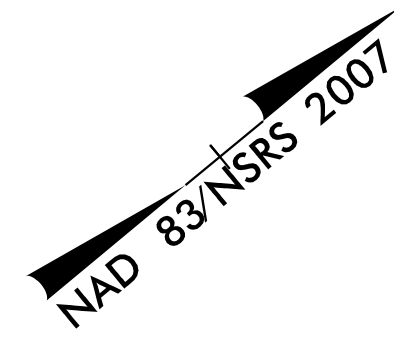
6/2/2017
 R:\Environmental\Design\U4751\EC_psh51.dgn
 psh51



NOTE:
 UTILIZE FABRIC INSERT INLET PROTECTION IN LIEU OF TYPE C INLET PROTECTION WHERE WATER MIGHT POND ON ROADWAY USED BY PUBLIC TRAFFIC.

SEE SHEET 2B-6 FOR INTERSECTION DETAILS
 SEE SHEET 46 FOR -Y1- PROFILE
 SEE SHEET 67 FOR -Y25- PROFILE
 SEE SHEET 2B-8 FOR CURVE DATA

6/2/2017
 R:\Informational\Design\U4751\EC\psh52.dgn
 P:\Projects\U4751\EC\psh52.dgn



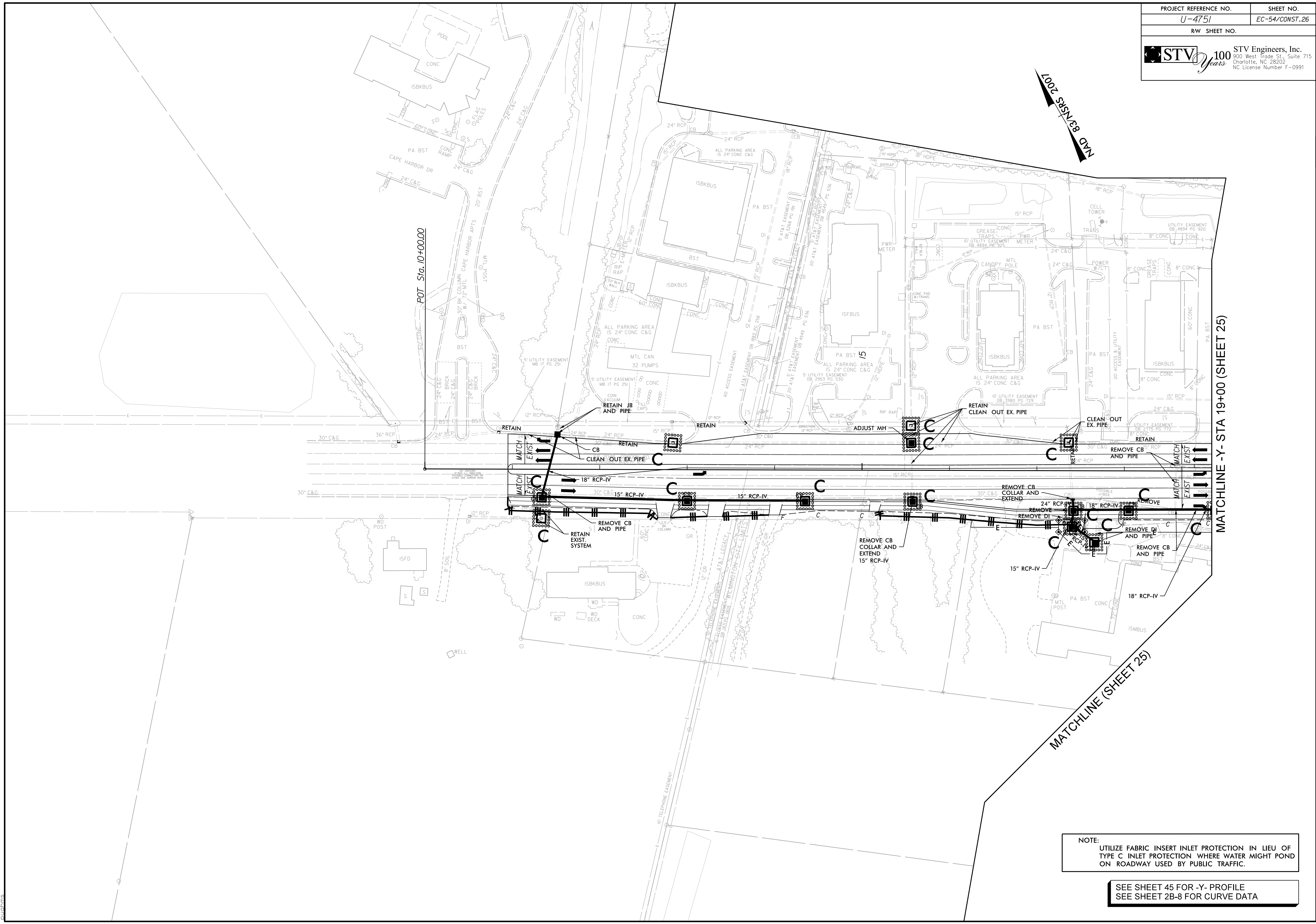
NOTE:
 UTILIZE FABRIC INSERT INLET PROTECTION IN LIEU OF TYPE C INLET PROTECTION WHERE WATER MIGHT POND ON ROADWAY USED BY PUBLIC TRAFFIC.

SEE SHEET 2B-6 FOR INTERSECTION DETAILS
 SEE SHEET 45 FOR -Y- PROFILE
 SEE SHEET 46 FOR -Y1- PROFILE
 SEE SHEET 2B-8 FOR CURVE DATA
 SEE SHEET 2D-2 FOR DITCH DETAIL
 SEE SHEETS S-1 THRU S-X FOR RETAINING WALL PLANS

-Y1- POT Sta. 31+13.57 =
 -Y- POT Sta. 22+10.18
 ?? DRAINAGE ??

6/2/2017
 R:\Informational\Design\U4751_EC_psh53.dgn
 P:\chims

MAD 8/28/RS 2007



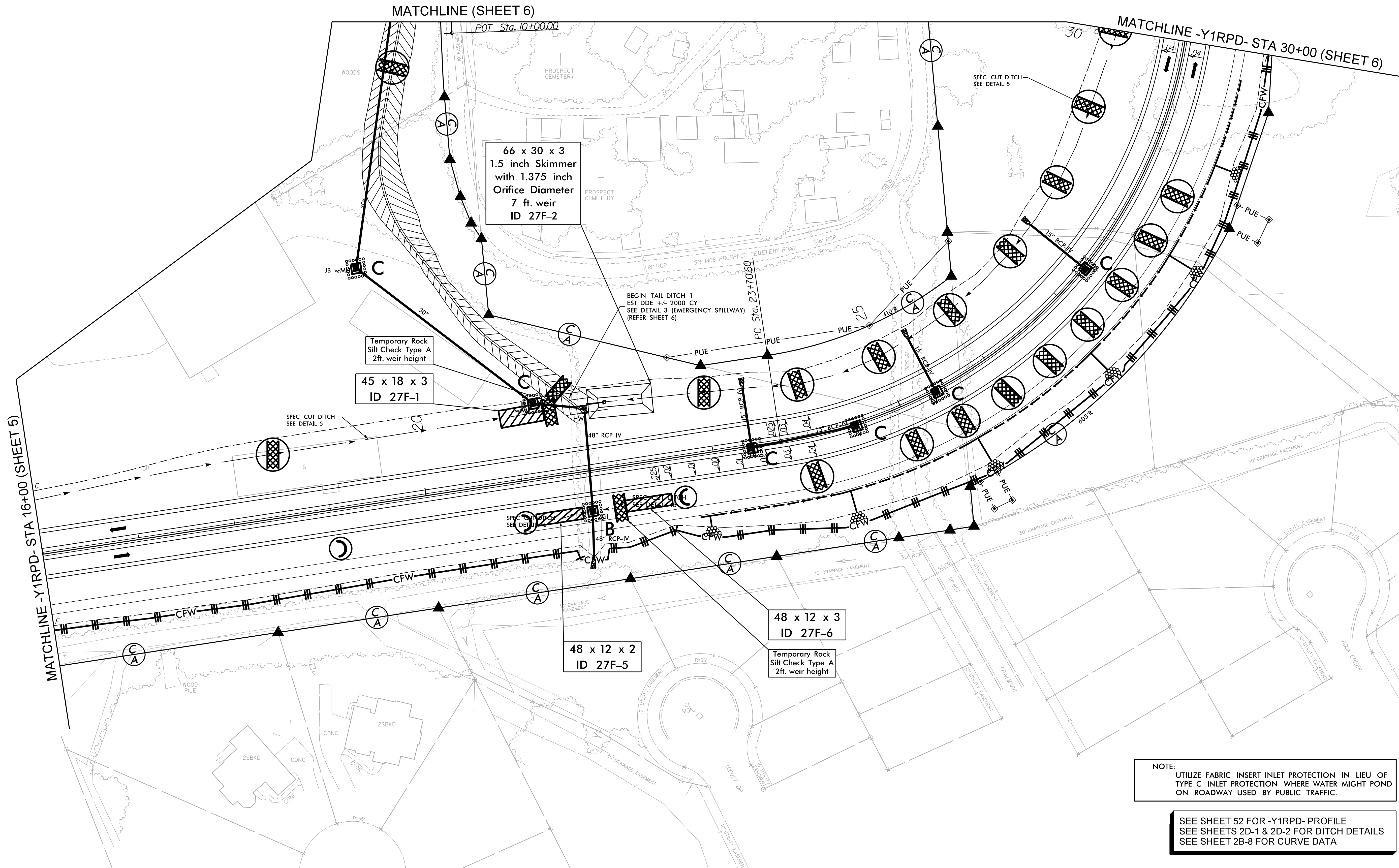
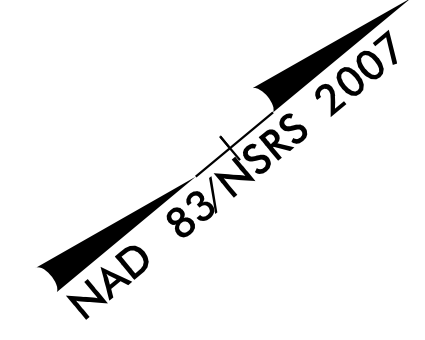
POT Sta. 10+00.00

MATCHLINE -Y- STA 19+00 (SHEET 25)

MATCHLINE (SHEET 25)

NOTE:
 UTILIZE FABRIC INSERT INLET PROTECTION IN LIEU OF
 TYPE C INLET PROTECTION WHERE WATER MIGHT POND
 ON ROADWAY USED BY PUBLIC TRAFFIC.

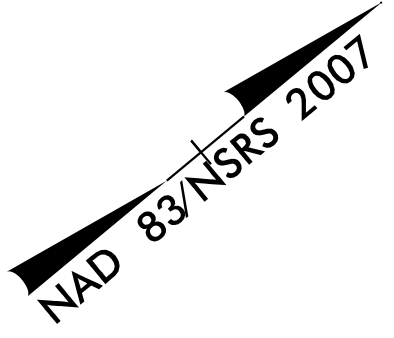
SEE SHEET 45 FOR -Y- PROFILE
 SEE SHEET 2B-8 FOR CURVE DATA



NOTE:
 UTILIZE FABRIC INSERT INLET PROTECTION IN LIEU OF TYPE C INLET PROTECTION WHERE WATER MIGHT POND ON ROADWAY USED BY PUBLIC TRAFFIC.

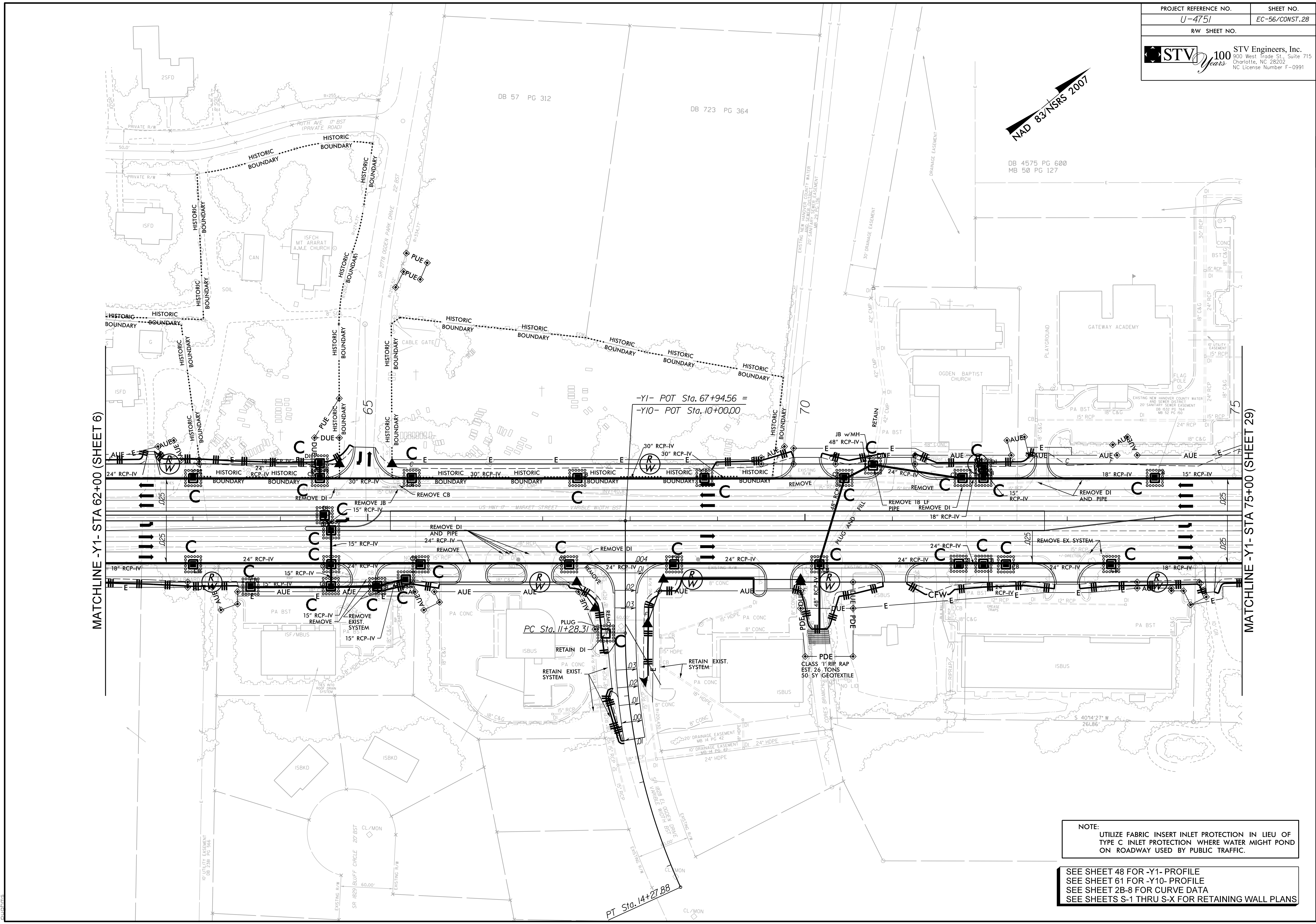
SEE SHEET 52 FOR -Y1RPD- PROFILE
 SEE SHEETS 2D-1 & 2D-2 FOR DITCH DETAILS
 SEE SHEET 2B-8 FOR CURVE DATA

6/2/2017
 R:\Environmental\Design\U4751\EC_psh55.dgn
 P:\chims



MATCHLINE -Y1- STA 62+00 (SHEET 6)

MATCHLINE -Y1- STA 75+00 (SHEET 29)



NOTE:
 UTILIZE FABRIC INSERT INLET PROTECTION IN LIEU OF TYPE C INLET PROTECTION WHERE WATER MIGHT POND ON ROADWAY USED BY PUBLIC TRAFFIC.

SEE SHEET 48 FOR -Y1- PROFILE
 SEE SHEET 61 FOR -Y10- PROFILE
 SEE SHEET 2B-8 FOR CURVE DATA
 SEE SHEETS S-1 THRU S-X FOR RETAINING WALL PLANS

R:\2007\Commentals\Design\U4751_EC_psh56.dgn
 6/2/2007
 PLUMBS

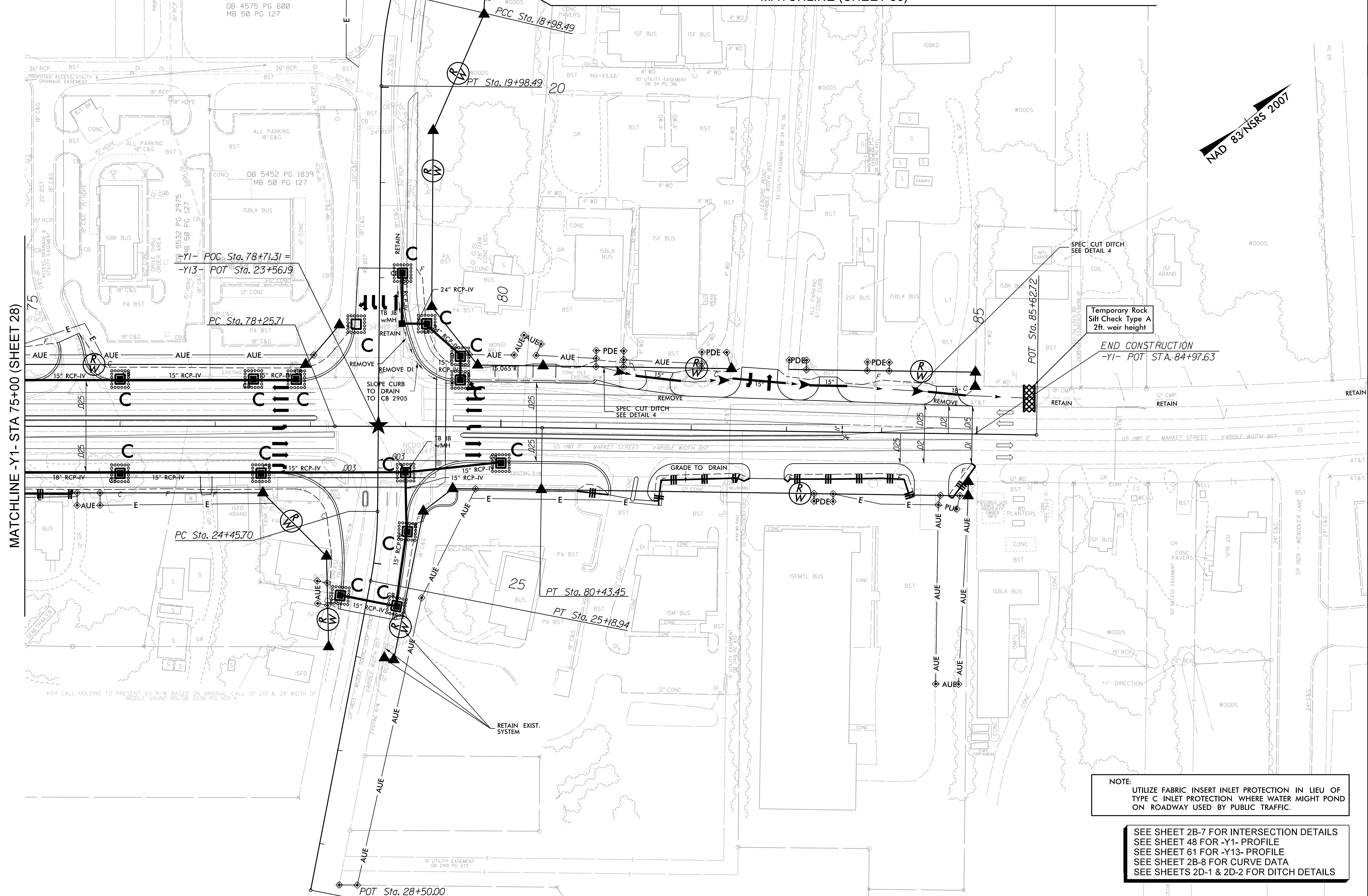
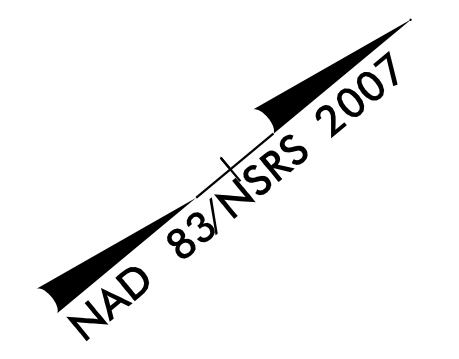
DB 4575 PG 600
MB 50 PG 127

DB 4575 PG 600
MB 50 PG 127

MATCHLINE -Y1- STA 75+00 (SHEET 28)

MATCHLINE
-Y13- STA 18+30 (SHEET 30)

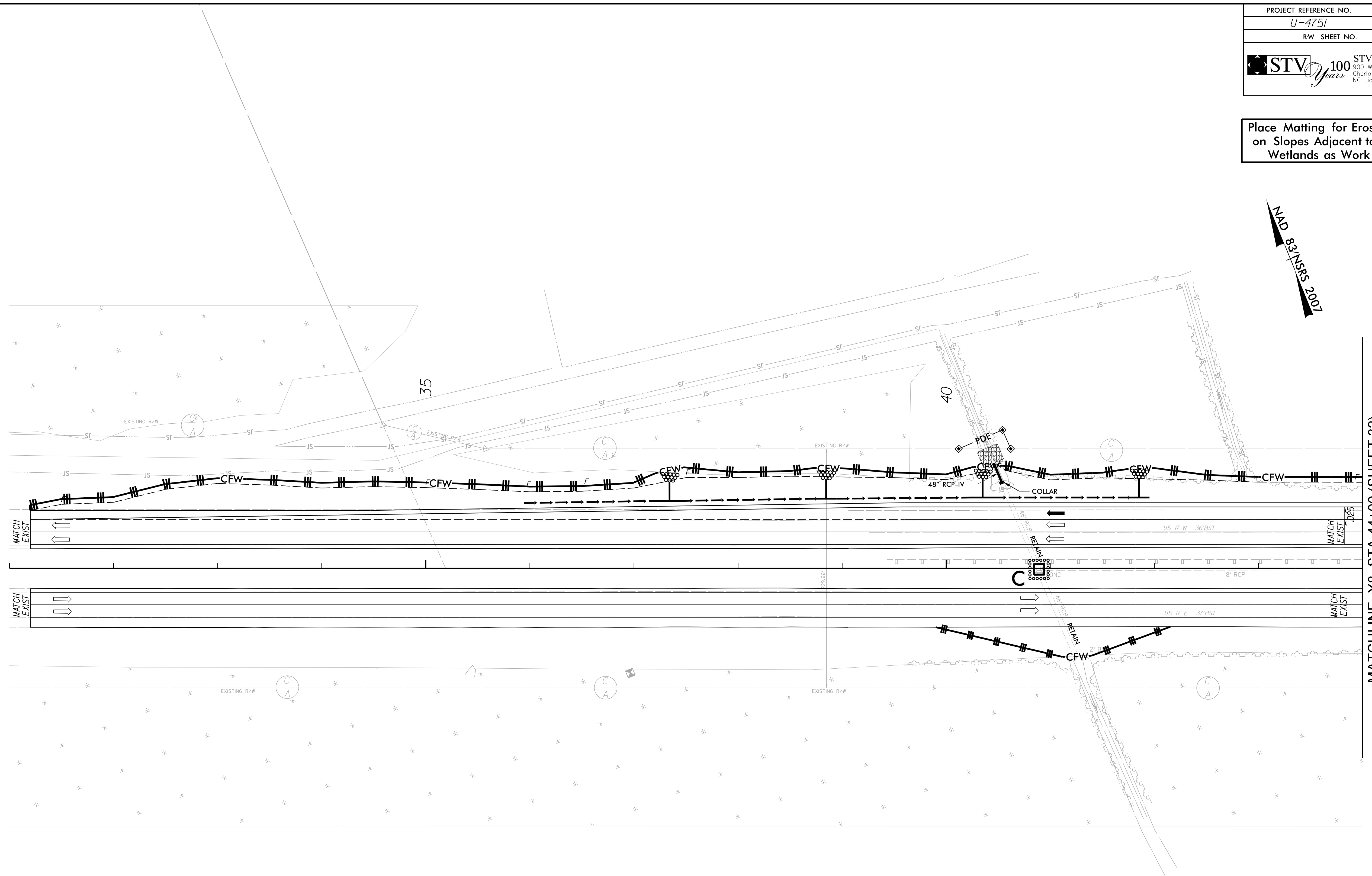
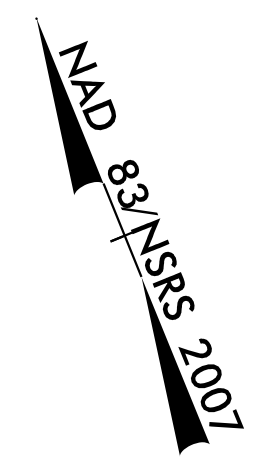
MATCHLINE (SHEET 30)



NOTE:
UTILIZE FABRIC INSERT INLET PROTECTION IN LIEU OF TYPE C INLET PROTECTION WHERE WATER MIGHT POND ON ROADWAY USED BY PUBLIC TRAFFIC.

SEE SHEET 2B-7 FOR INTERSECTION DETAILS
SEE SHEET 48 FOR -Y1- PROFILE
SEE SHEET 61 FOR -Y13- PROFILE
SEE SHEET 2B-8 FOR CURVE DATA
SEE SHEETS 2D-1 & 2D-2 FOR DITCH DETAILS

Place Matting for Erosion Control on Slopes Adjacent to Permitted Wetlands as Work Allows.

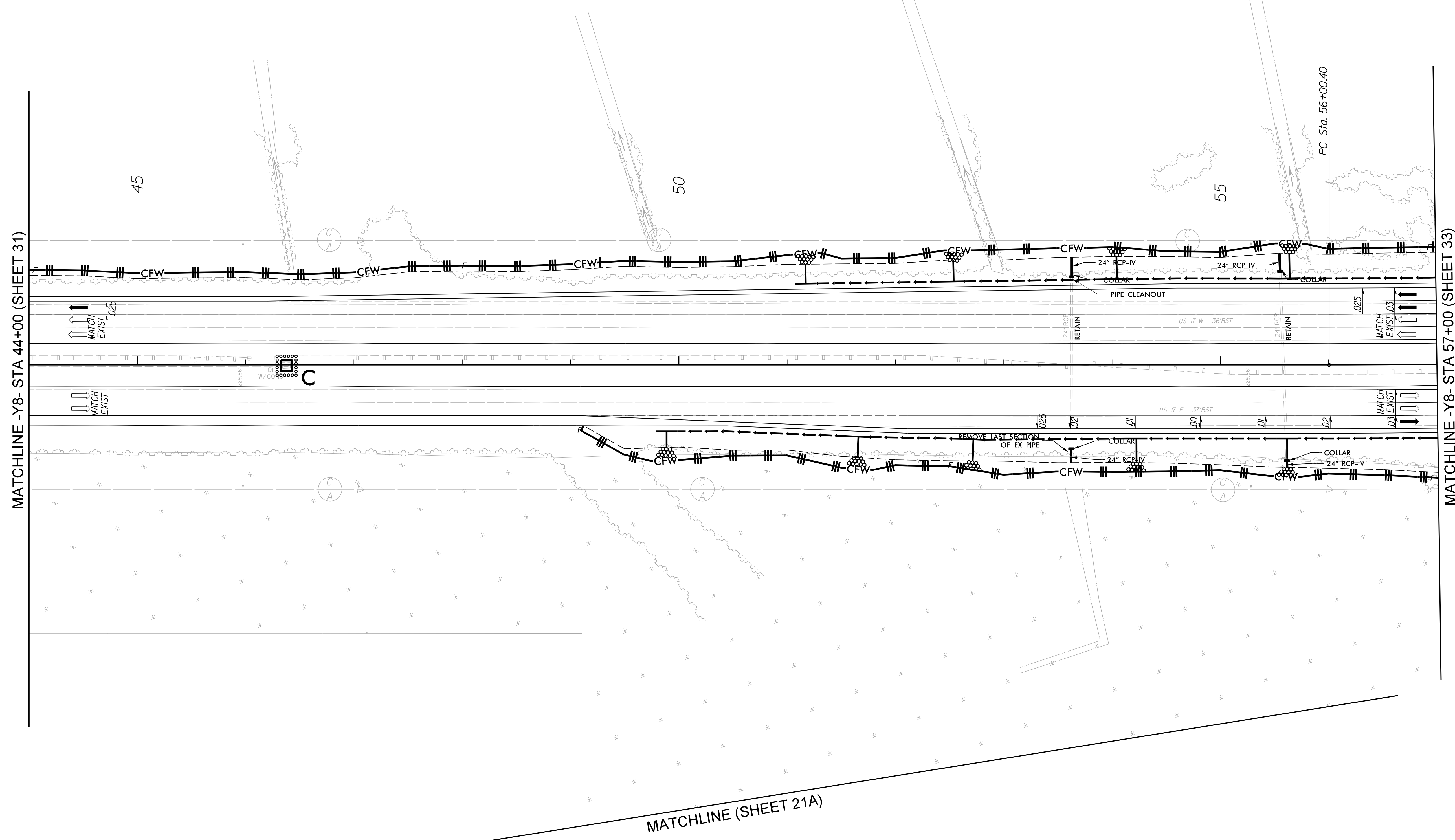


MATCHLINE -Y8- STA 44+00 (SHEET 32)

SEE SHEET 64 FOR -Y8- PROFILE
SEE SHEET 2B-8 FOR CURVE DATA

Place Matting for Erosion Control on Slopes Adjacent to Permitted Wetlands as Work Allows.

NAD 83/NRS-2007



MATCHLINE -Y8- STA 44+00 (SHEET 31)

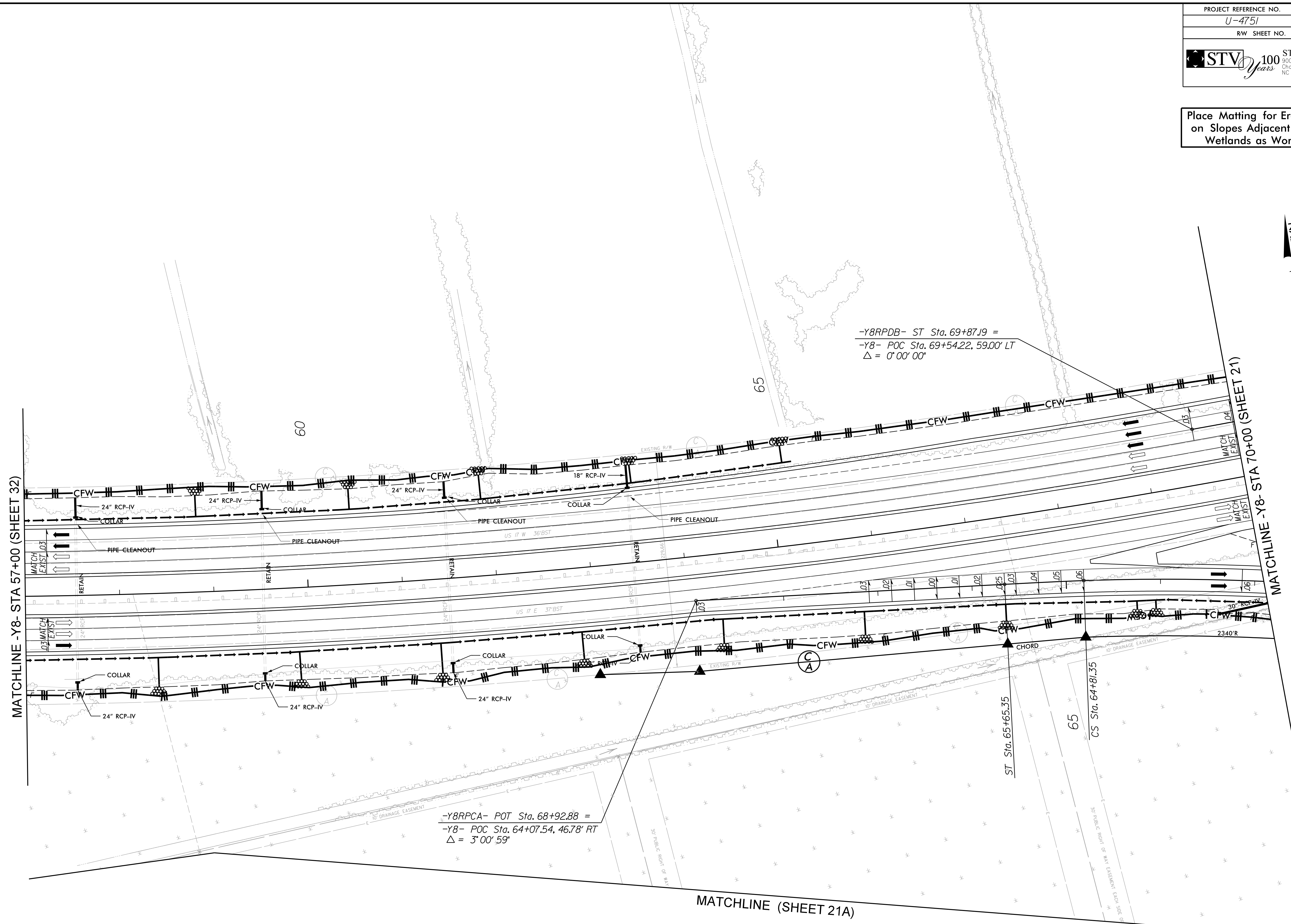
MATCHLINE -Y8- STA 57+00 (SHEET 33)

MATCHLINE (SHEET 21A)

SEE SHEET 64 FOR -Y8- PROFILE
 SEE SHEET 2B-8 FOR CURVE DATA

Place Matting for Erosion Control on Slopes Adjacent to Permitted Wetlands as Work Allows.

NAD 83/NSRS 2007

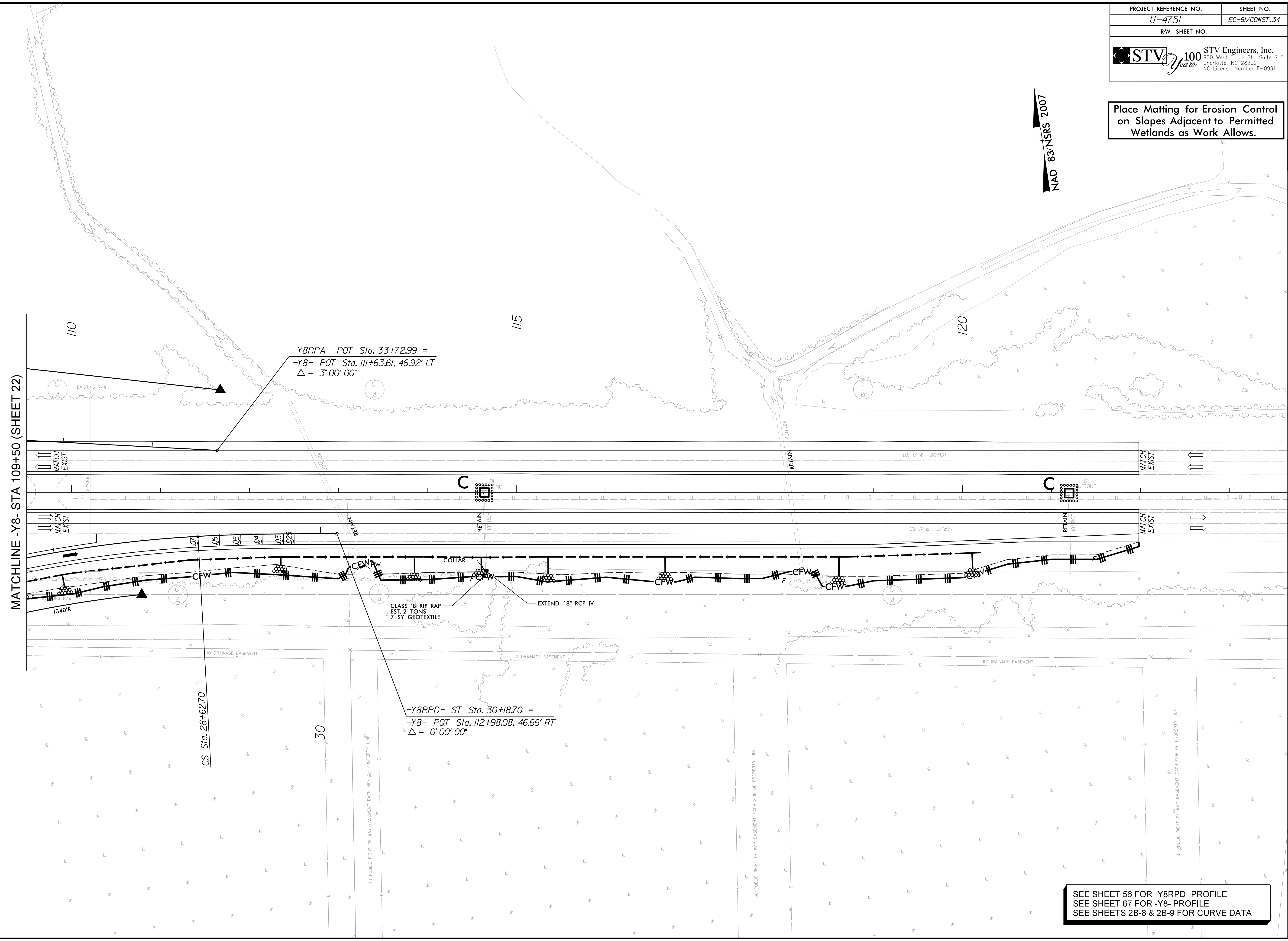


SEE SHEET 55 FOR -Y8RPCA- PROFILE
 SEE SHEET 59 FOR -Y8RPDB- PROFILE
 SEE SHEET 65 FOR -Y8- PROFILE
 SEE SHEETS 2B-8 & 2B-9 FOR CURVE DATA

6/2/2017
 R:\Environmental\Design\U4751\EC_psh60.dgn
 P:\CHMS

Place Matting for Erosion Control on Slopes Adjacent to Permitted Wetlands as Work Allows.

NAD 83/NSRS 2007



-Y8RPA- POT Sta. 33+72.99 =
 -Y8- POT Sta. 111+63.61, 46.92' LT
 $\Delta = 3' 00'' 00''$

-Y8RPD- ST Sta. 30+18.70 =
 -Y8- POT Sta. 112+98.08, 46.66' RT
 $\Delta = 0' 00'' 00''$

CLASS 'B' RIP RAP
 EST. 2 TONS
 7 SY GEOTEXTILE

MATCHLINE -Y8- STA 109+50 (SHEET 22)

MATCH EXIST

MATCH EXIST

MATCH EXIST

MATCH EXIST

MATCH EXIST

MATCH EXIST

MATCH EXIST

MATCH EXIST

SEE SHEET 56 FOR -Y8RPD- PROFILE
 SEE SHEET 67 FOR -Y8- PROFILE
 SEE SHEETS 2B-8 & 2B-9 FOR CURVE DATA