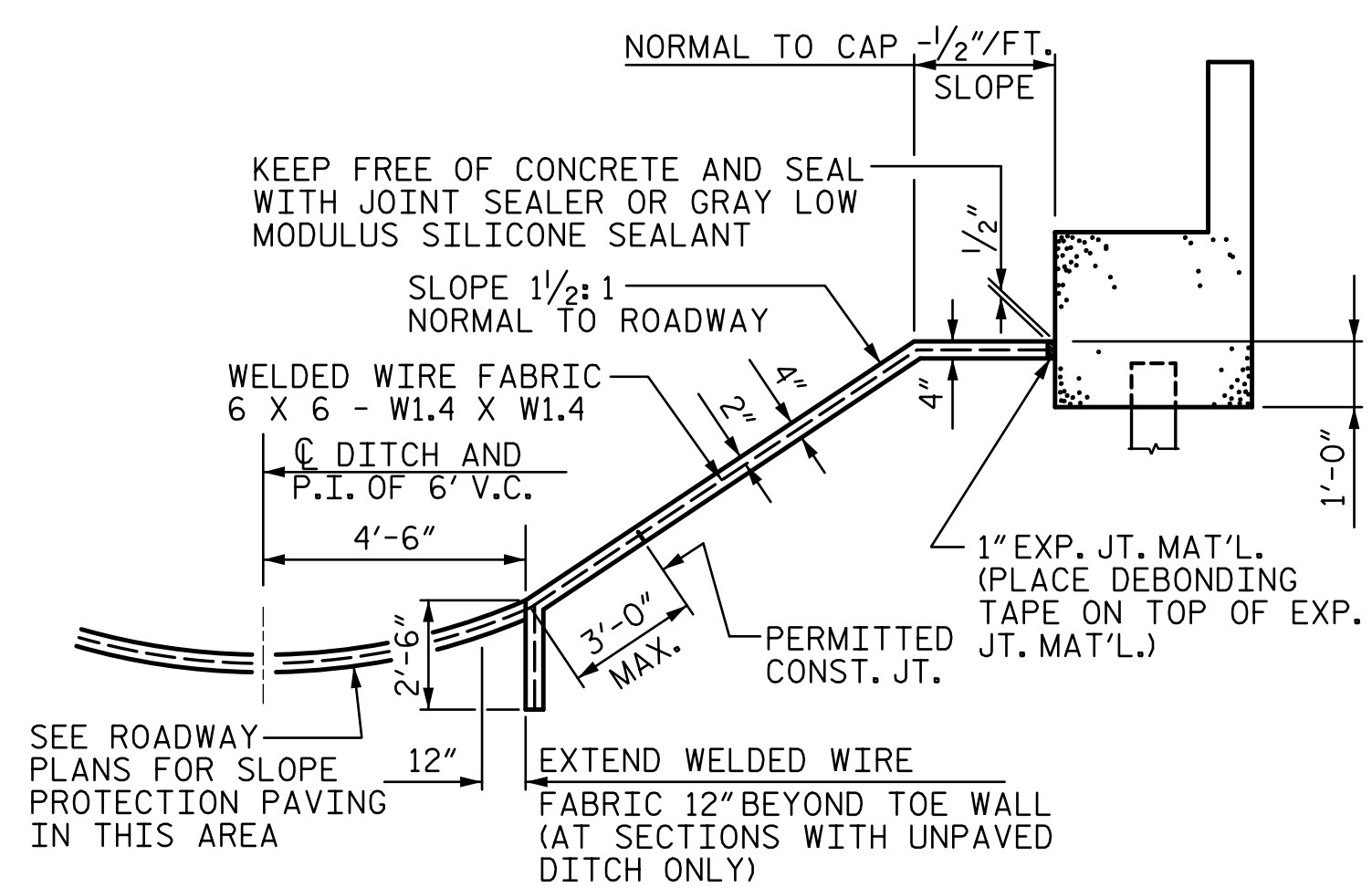


PLAN AT END BENT 1

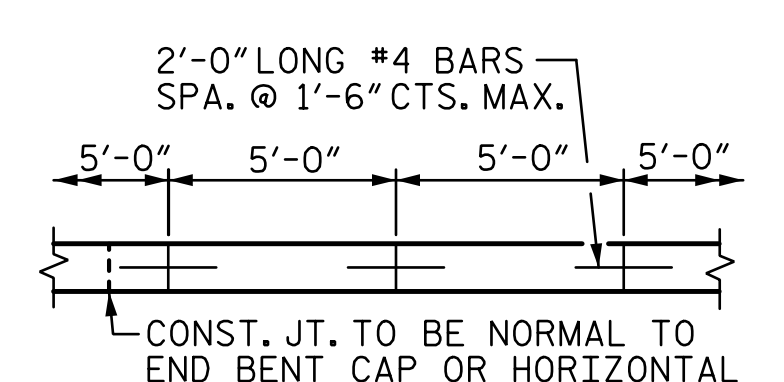
GENERAL NOTES

STRAIGHT EDGING WILL NOT BE REQUIRED UNLESS, IN THE OPINION OF THE ENGINEER, VISUAL INSPECTION INDICATES A NEED FOR IT. MEASUREMENT AND PAYMENT SHALL BE AS PRESCRIBED IN SECTION 462 OF THE STANDARD SPECIFICATIONS. FOR BERM WIDTH, SEE GENERAL DRAWING.

SLOPE PROTECTION SHALL CONSIST OF 4" POURED-IN-PLACE CONCRETE PAVING AS SHOWN IN THE DETAILS ON THIS SHEET. CONCRETE SHALL BE CLASS "B". THE CONCRETE SURFACE SHALL BE FLOATED WITH A WOODEN FLOAT AND FINISHED. WELDED WIRE FABRIC REINFORCING SHALL BE 6 X 6 - W1.4 X W1.4, 60" WIDE. SLOPE PROTECTION SHALL BE POURED IN 5' STRIPS AS SHOWN IN THE "POURING DETAIL" WITH 2'-0" LONG #4 BARS PLACED ALONG THE SLOPE BETWEEN STRIPS AT 1'-6" MAXIMUM SPACING. SLOPE PROTECTION MAY BE POURED IN ALTERNATE 4' AND 5' STRIPS AS SHOWN IN THE "OPTIONAL POURING DETAIL" WITH ADJACENT RUNS OF WELDED WIRE FABRIC LAPPING AT LEAST 6". THE COST OF THE WELDED WIRE FABRIC AND #4 BARS, IF USED, SHALL BE INCLUDED IN THE CONTRACT UNIT PRICE BID PER SQUARE YARD FOR SLOPE PROTECTION.



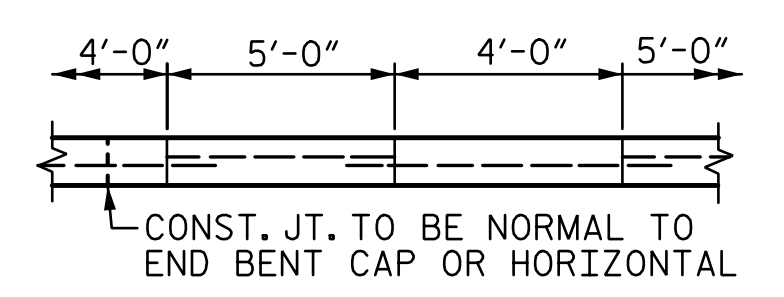
SECTION AT END BENT 1 ALONG C SURVEY -Y8RPDB-
SECTION WITH PAVED DITCH SHOWN,
SECTION WITH UNPAVED DITCH SIMILAR



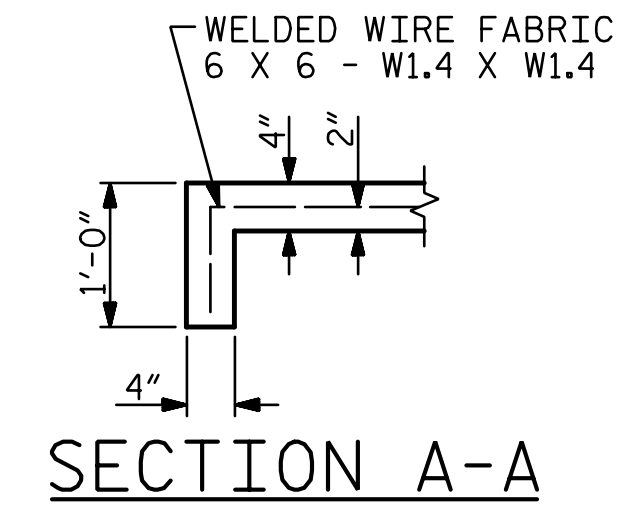
POURING DETAIL

BRIDGE @ STA. 35+12.05 -Y8RPDB-	4 INCH SLOPE PROTECTION	WELDED WIRE FABRIC 60 INCHES WIDE
	SQUARE YARDS	APPROX. L.F.
END BENT 1	452	900

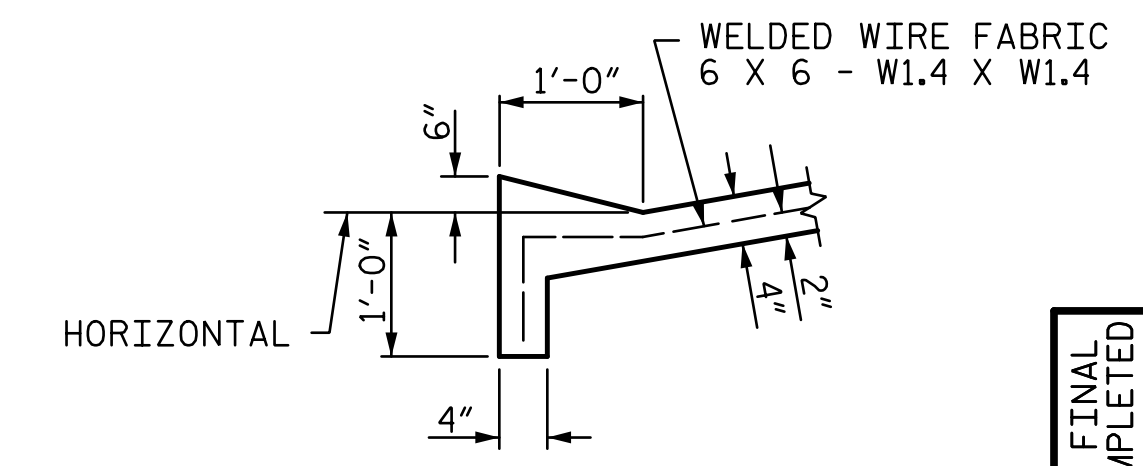
* QUANTITY SHOWN IS BASED ON 5' POURS.



OPTIONAL POURING DETAIL



SECTION A-A



SECTION B-B

PROJECT NO. U-4751
NEW HANOVER COUNTY
STATION: 35+12.05 -Y8RPDB-
SHEET 1 OF 2

DOCUMENT NOT CONSIDERED FINAL UNLESS ALL SIGNATURES COMPLETED

STATE OF NORTH CAROLINA
DEPARTMENT OF TRANSPORTATION
RALEIGH

SLOPE PROTECTION DETAILS

REVISIONS					
NO.	BY:	DATE:	NO.	BY:	DATE:
1			3		
2			4		

SHEET NO. S4-33
TOTAL SHEETS 36

r:\404_065_U4751_SML_SP_033_640204.dgn 6/30/2017 13:15:56

DRAWN BY: MBC DATE: 4-17 DESIGN ENGINEER OF RECORD: T. LAWS DATE: 5-17
CHECKED BY: TRL DATE: 4-17