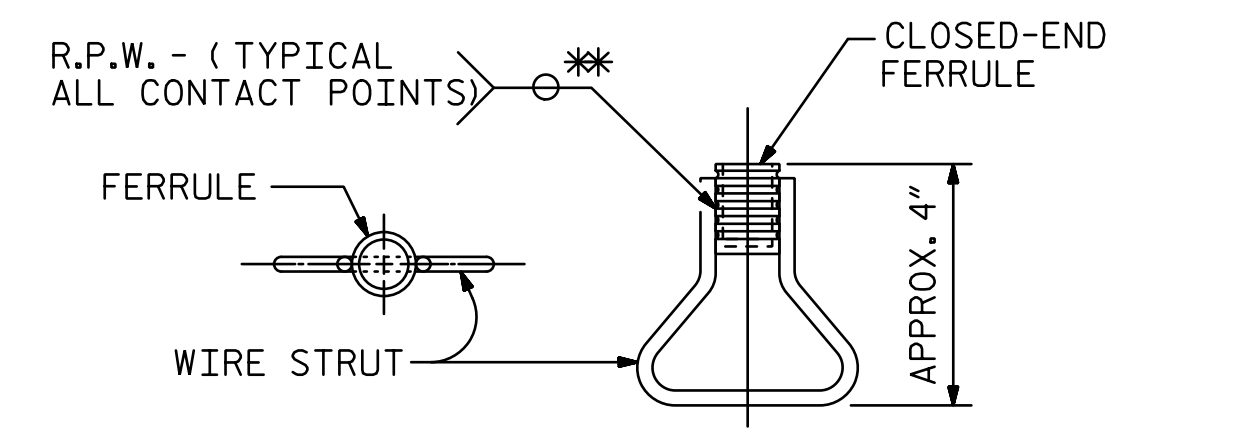
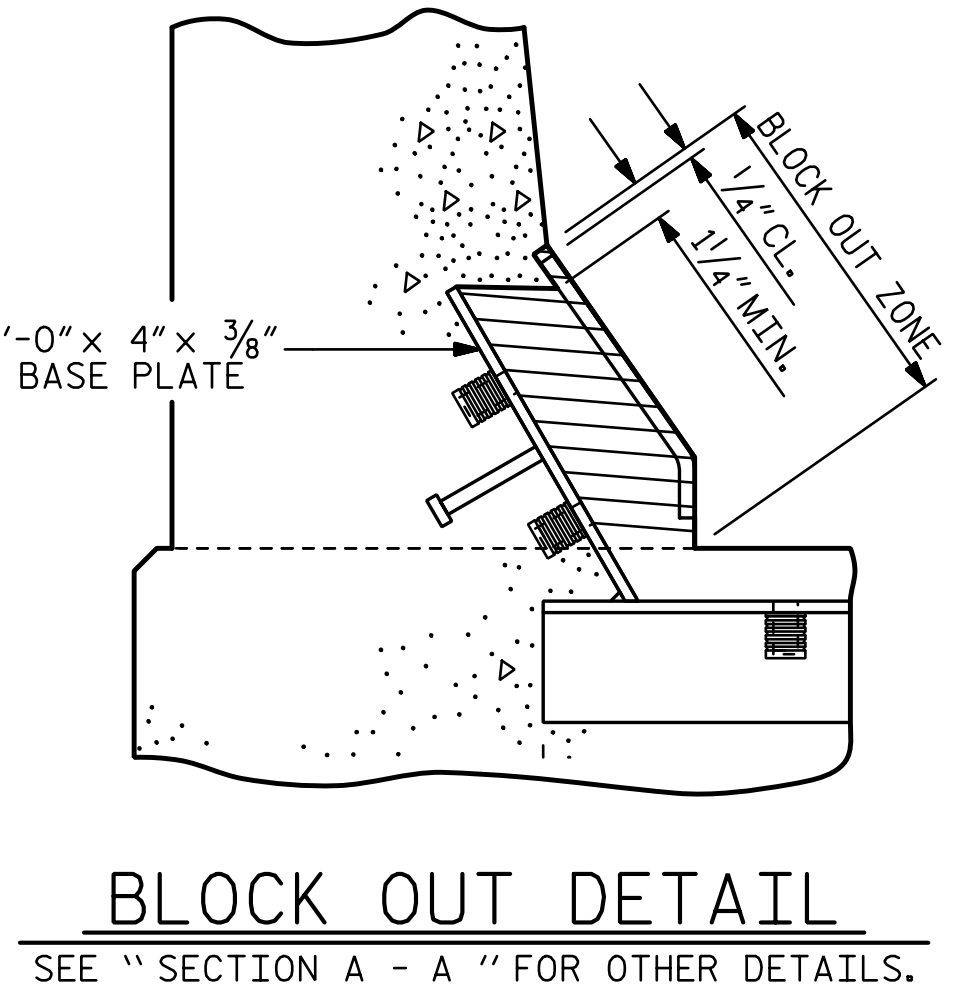
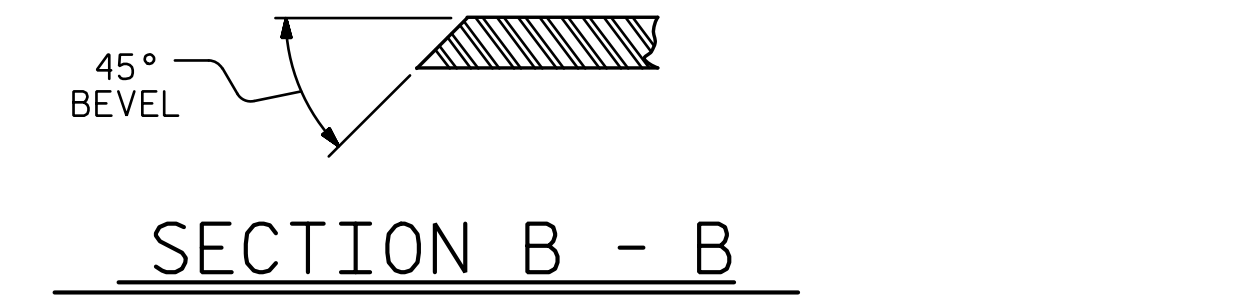
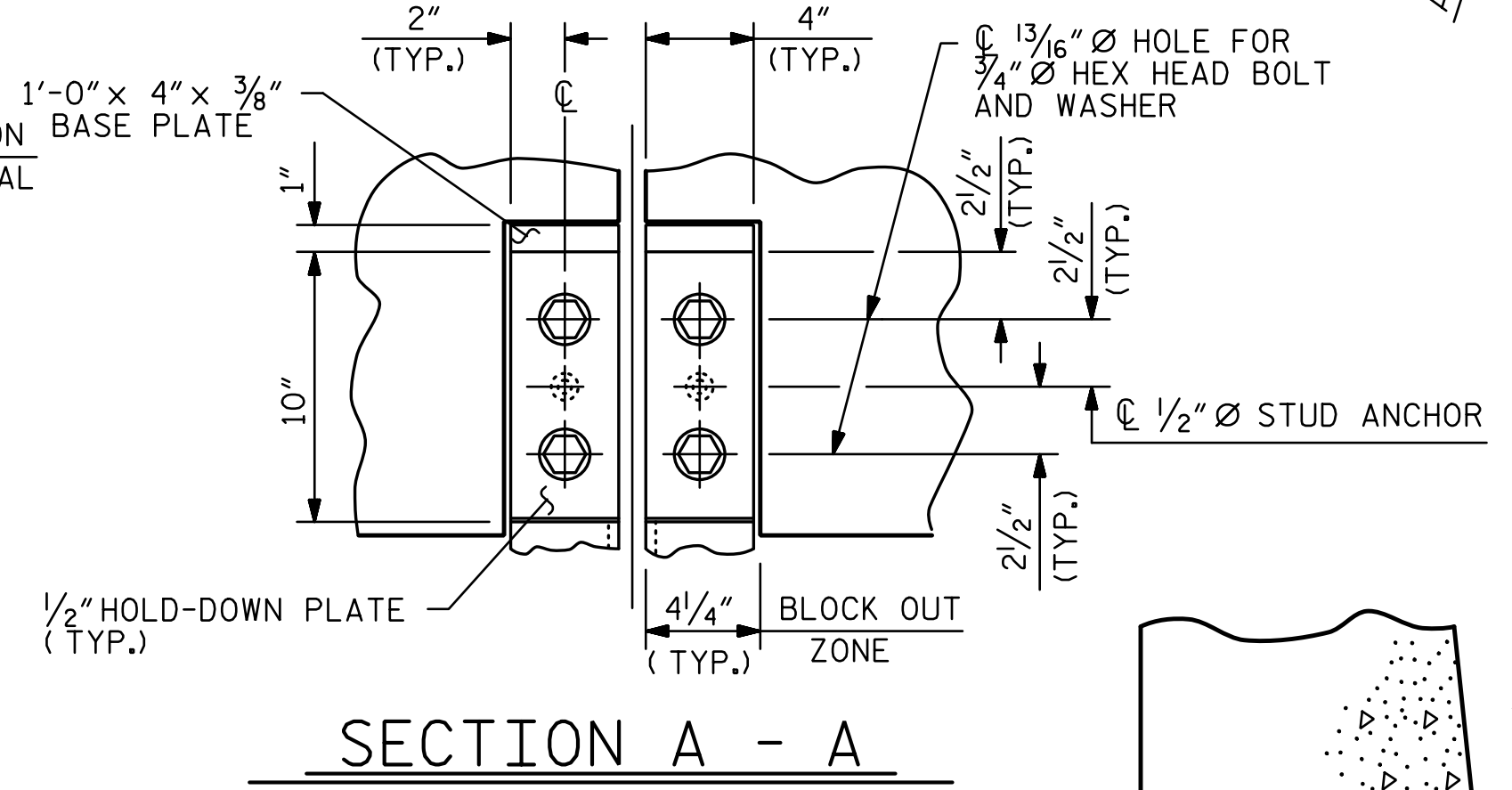
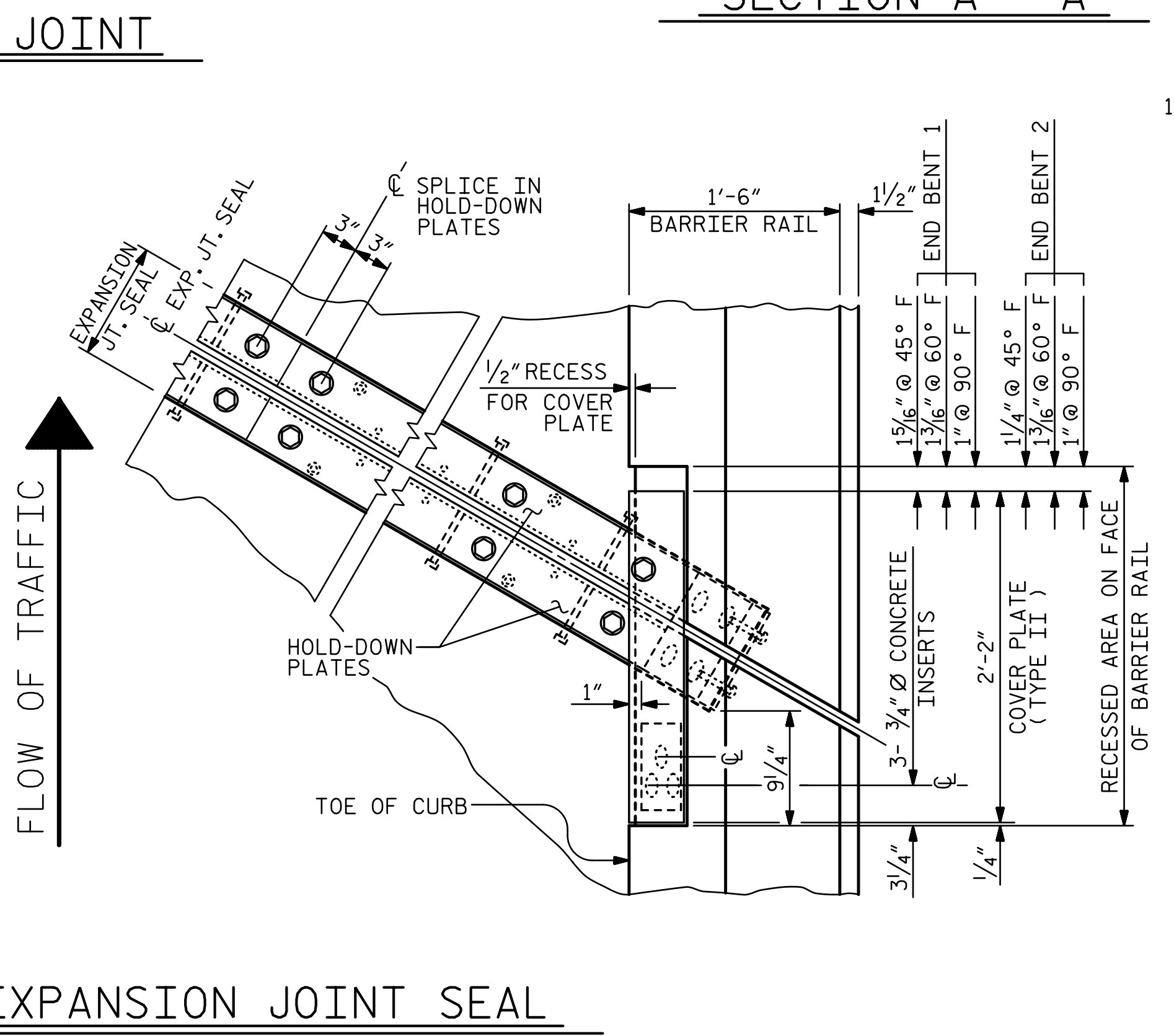
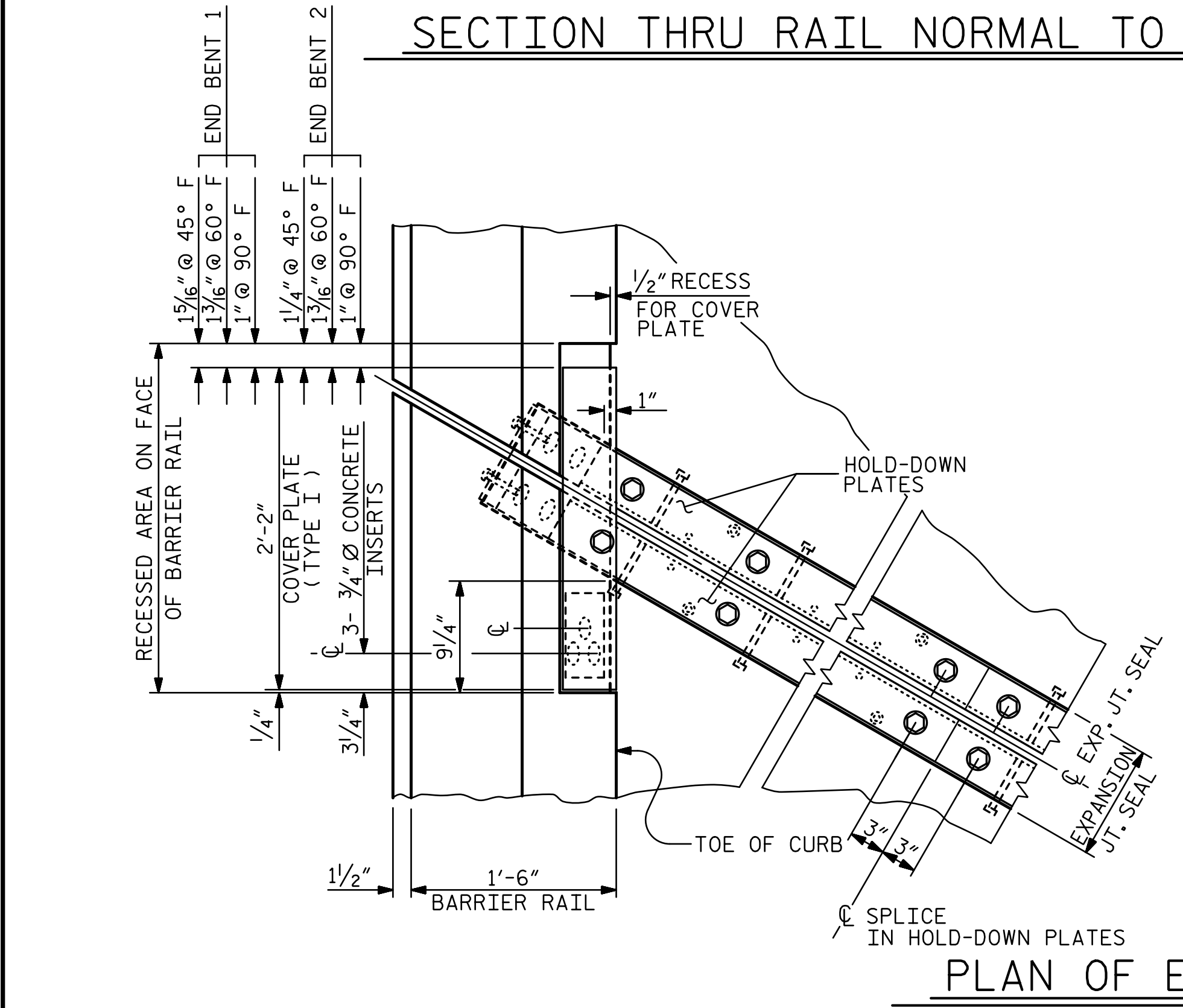
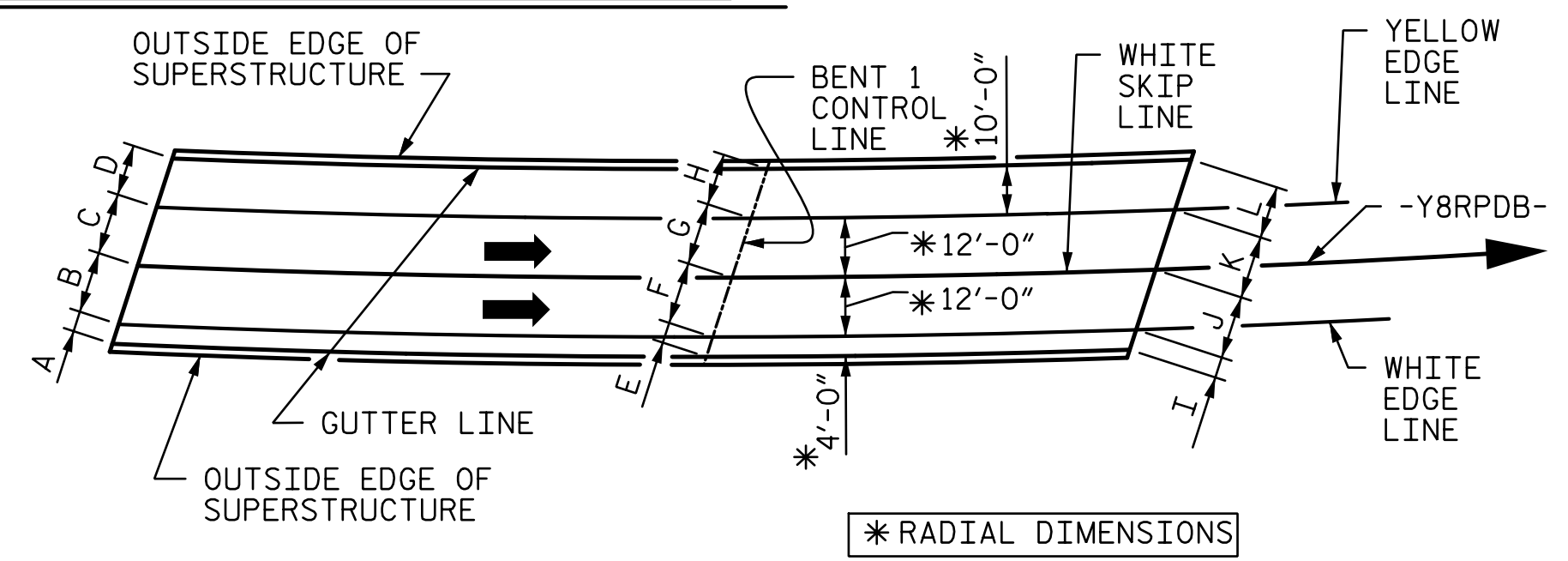


PAVEMENT MARKING DIMENSIONS

A	4'-4 1/16"	E	4'-2 3/8"	I	4'-4 1/4"
B	12'-3 3/4"	F	12'-7 5/16"	J	13'-1 1/16"
C	12'-3 5/16"	G	12'-7 1/16"	K	13'-1 3/8"
D	10'-2 13/16"	H	10'-6 3/8"	L	10'-11 1/16"



PROJECT NO. U-4751
 NEW HANOVER COUNTY
 STATION: 35+12.05 -Y8RPDB-
 SHEET 2 OF 2

DOCUMENT NOT CONSIDERED FINAL
UNLESS ALL SIGNATURES COMPLETED

6/30/2017

STATE OF NORTH CAROLINA
 DEPARTMENT OF TRANSPORTATION
 RALEIGH

SUPERSTRUCTURE
EXPANSION JOINT SEAL DETAILS

SHEET NO.
S4-22

TOTAL SHEETS
36

REVISIONS			
NO.	BY:	DATE:	DATE:
1			
2			
3			
4			

DRAWN BY: MBC DATE: 3-17
 CHECKED BY: TRL DATE: 4-17
 DESIGN ENGINEER OF RECORD: T. LAWS DATE: 5-17

6/30/2017 13:10:48 r:\404_043_U4751_SMLU_JT_022.640204.dgn