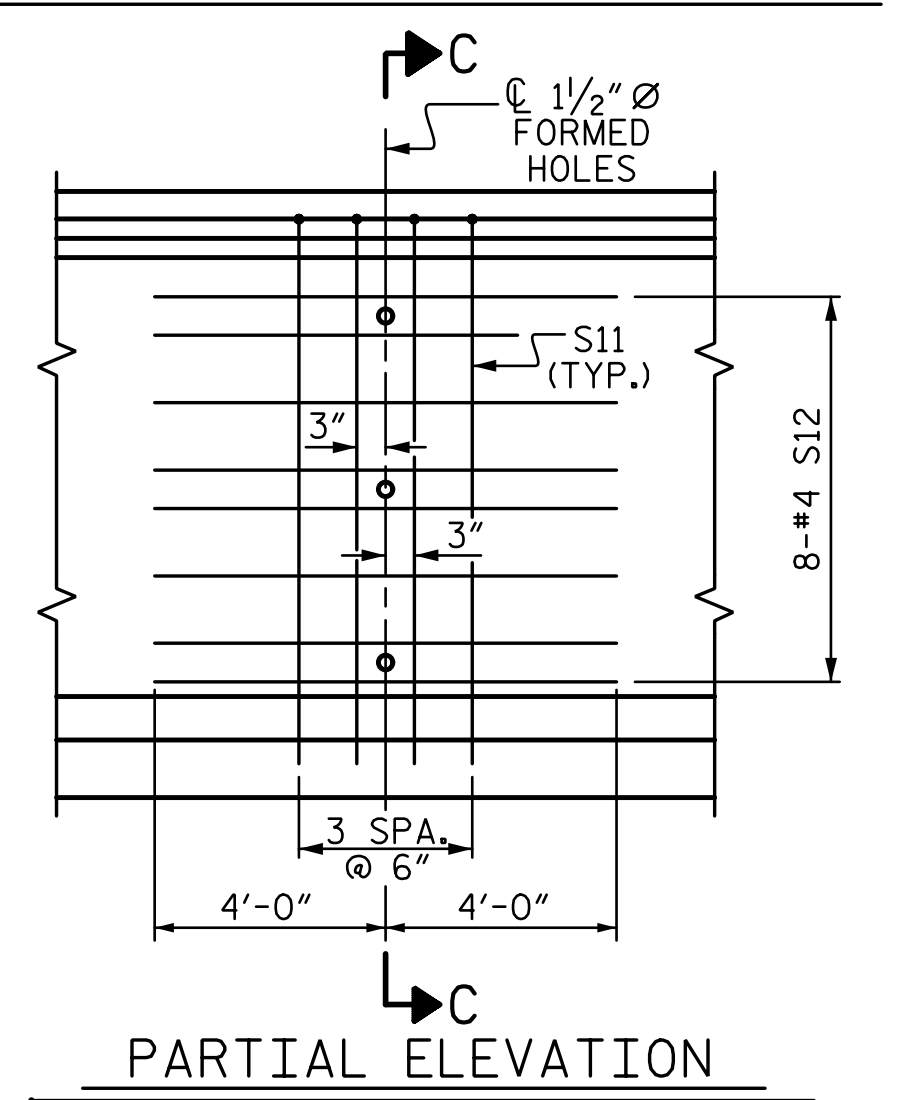
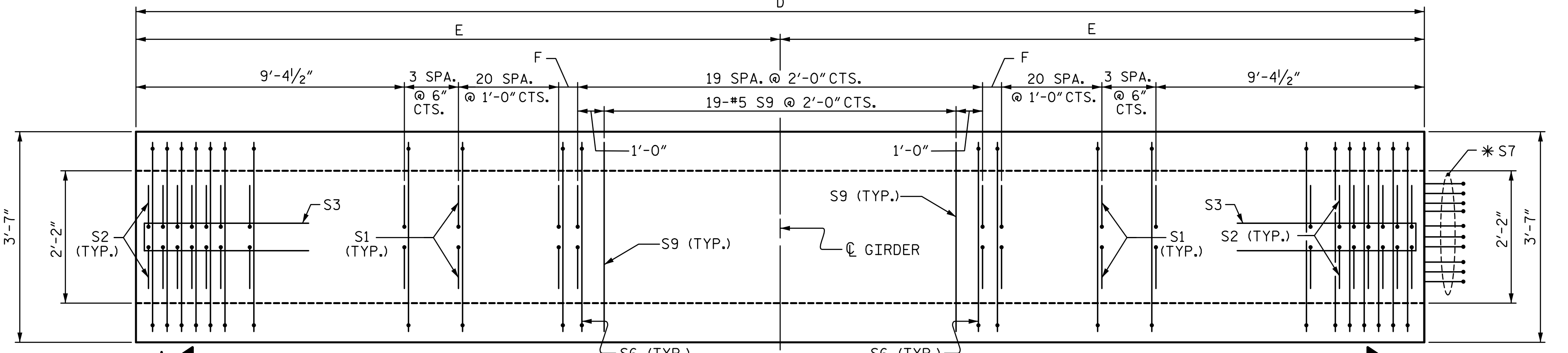
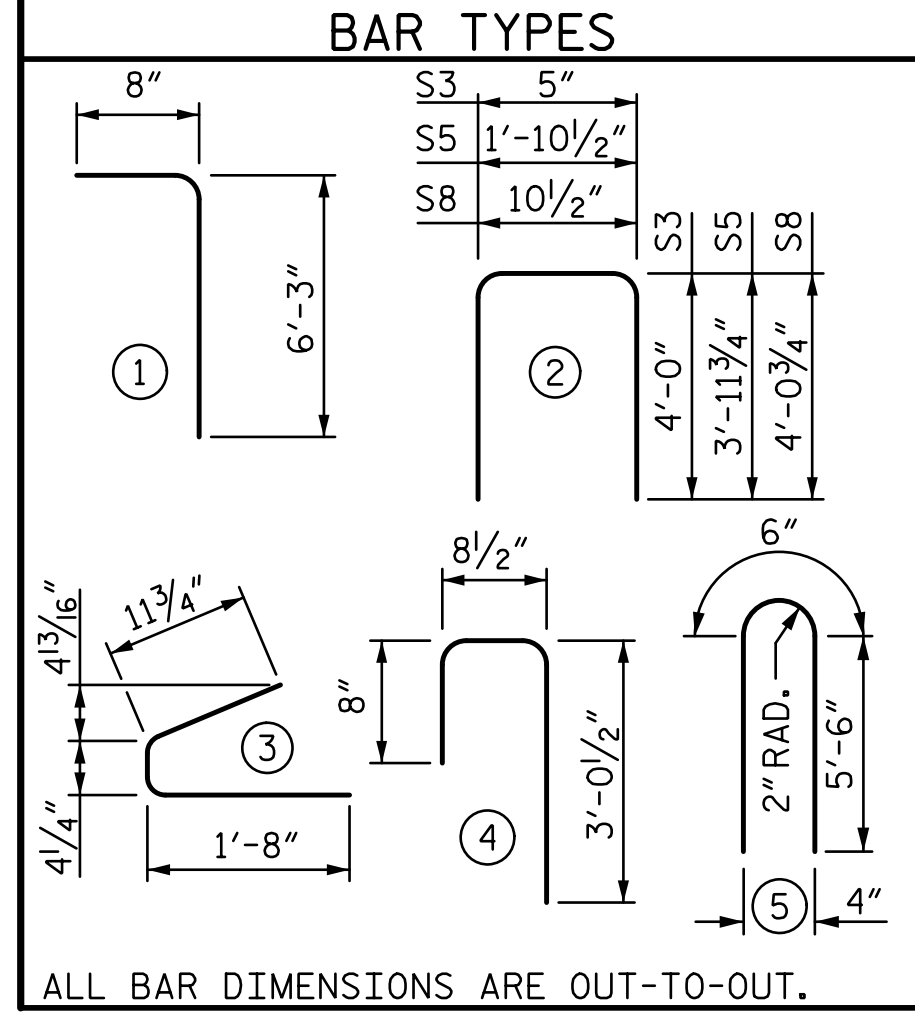


0.6" Ø L. R. GRADE 270 STRANDS		
AREA (SQ. INCHES)	ULTIMATE STRENGTH (LBS. PER STRAND)	APPLIED PRESTRESS (LBS. PER STRAND)
0.217	58,600	43,950

REINFORCING STEEL FOR ONE GDR					
BAR	NUMBER	SIZE	TYPE	LENGTH	WEIGHT
S1	192	#4	1	6'-11"	887
S2	24	#6	1	6'-11"	249
S3	14	#4	2	8'-5"	79
S4	84	#4	3	3'-0"	168
S5	1	#5	2	9'-10"	10
S6	216	#5	4	4'-5"	995
*S7	10	#5	STR	3'-8"	38
S8	2	#5	2	9'-0"	19
S9	19	#5	STR	3'-3"	64
S10	1	#3	STR	1'-10"	1
S11	8	#5	5	1'-6"	96
S12	16	#4	STR	8'-0"	86

* NOTE: S7 BARS SHALL BE BENT BEFORE SHIPMENT. HEAT BENDING SHALL NOT BE ALLOWED.

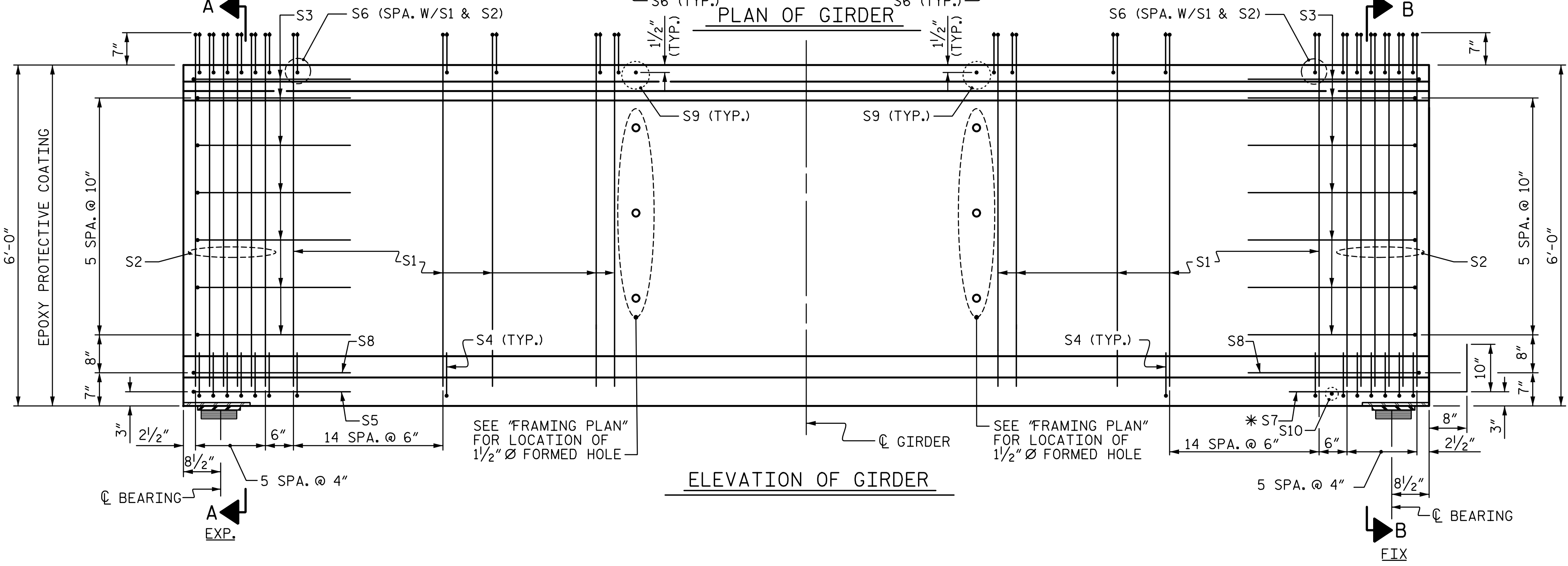


SHOWING INTERMEDIATE STEEL DIAPHRAGM REINFORCING STEEL FOR GIRDER Nos. 1 THRU 4

GDR.	D	E	F	CONCRETE
B1	102'-9"	51'-4 1/2"	1'-6"	22.0 CY
B2	102'-7"	51'-3 1/2"	1'-5"	22.0 CY
B3	102'-5 1/4"	51'-2 5/8"	1'-4 1/8"	22.0 CY
B4	102'-3 1/2"	51'-1 3/4"	1'-3 1/4"	21.9 CY

QUANTITIES FOR ONE GIRDER			
	REINFORCING STEEL	8500 CONCRETE	0.6" Ø L.R. STRANDS
	LB.	C.Y.	No.
GIRDER	2692	SEE TABLE	40

GIRDERS REQUIRED		
NUMBER	LENGTH	TOTAL LENGTH
4	SEE TABLE	410'-0 3/4"



6/30/2017 13:10:17 r:\404_027_U4751_SMU_GI_014_640204.dgn

DRAWN BY: MBC DATE: 3-17 DESIGN ENGINEER OF RECORD: T. LAWS DATE: 5-17
 CHECKED BY: TRL DATE: 4-17

DOCUMENT NOT CONSIDERED FINAL UNLESS ALL SIGNATURES COMPLETED

 6/30/2017

STATE OF NORTH CAROLINA
 DEPARTMENT OF TRANSPORTATION
 RALEIGH
 SUPERSTRUCTURE
 72" PRESTRESSED CONCRETE MODIFIED BULB TEE
 CONTINUOUS FOR LIVE LOAD
 SPAN "B"
 REVISIONS:
 NO. 1 BY: DATE: NO. 2 BY: DATE: NO. 3 BY: DATE: NO. 4 BY: DATE:
 SHEET NO. S4-14
 TOTAL SHEETS 36

PROJECT NO. U-4751
 NEW HANOVER COUNTY
 STATION: 35+12.05 -Y8RPDB-
 SHEET 2 OF 3