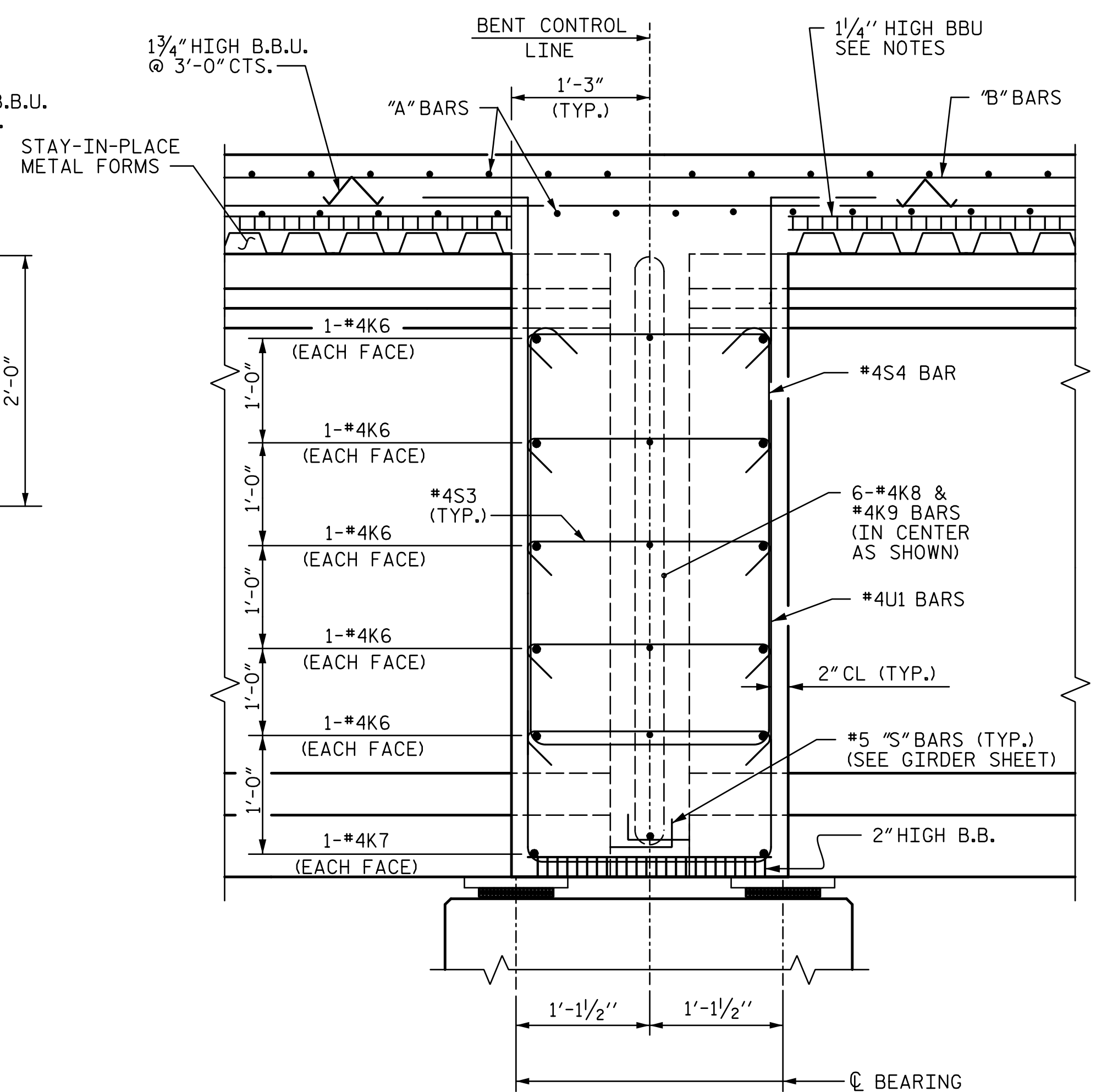
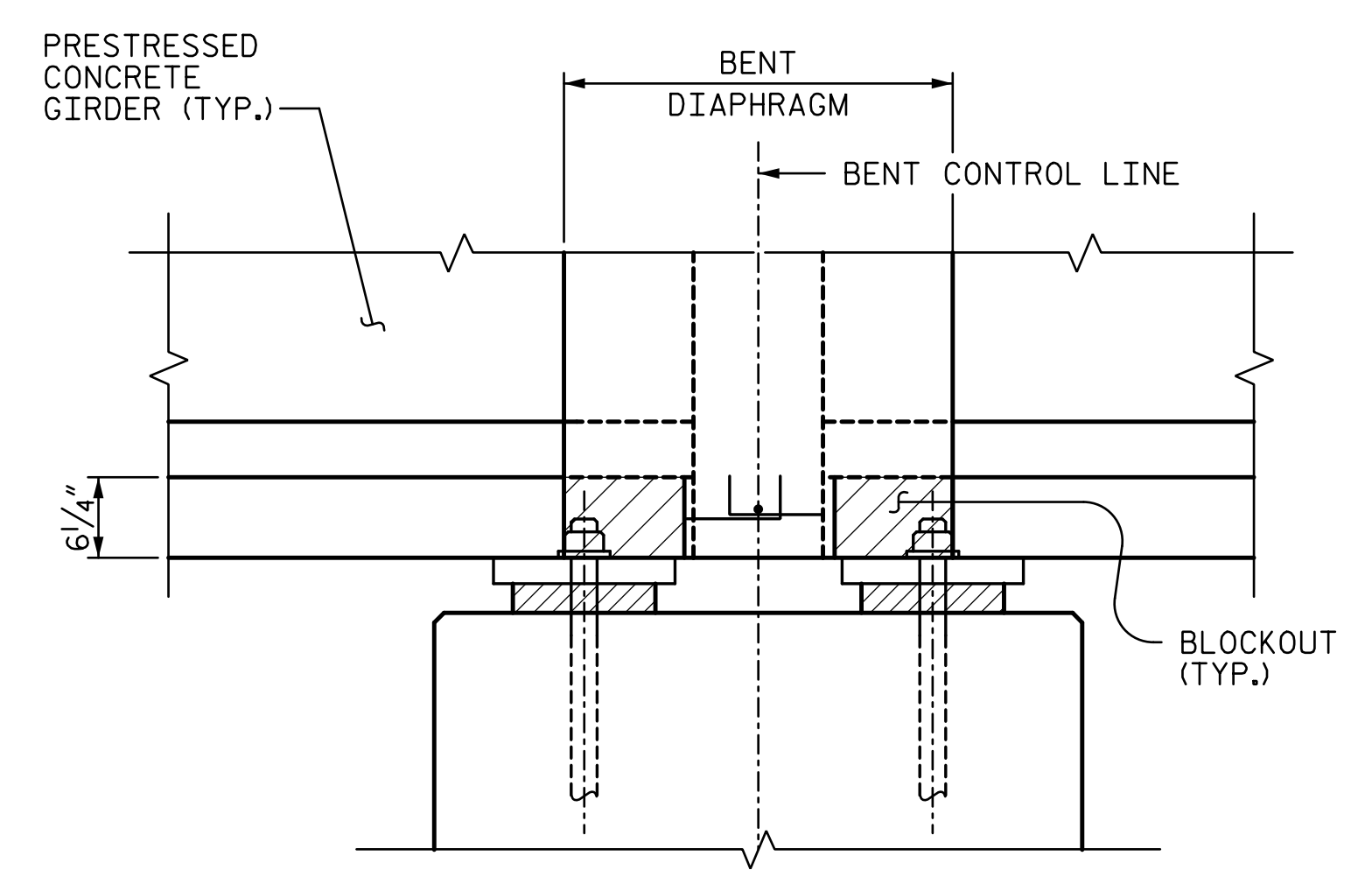


SECTION THRU END DIAPHRAGM

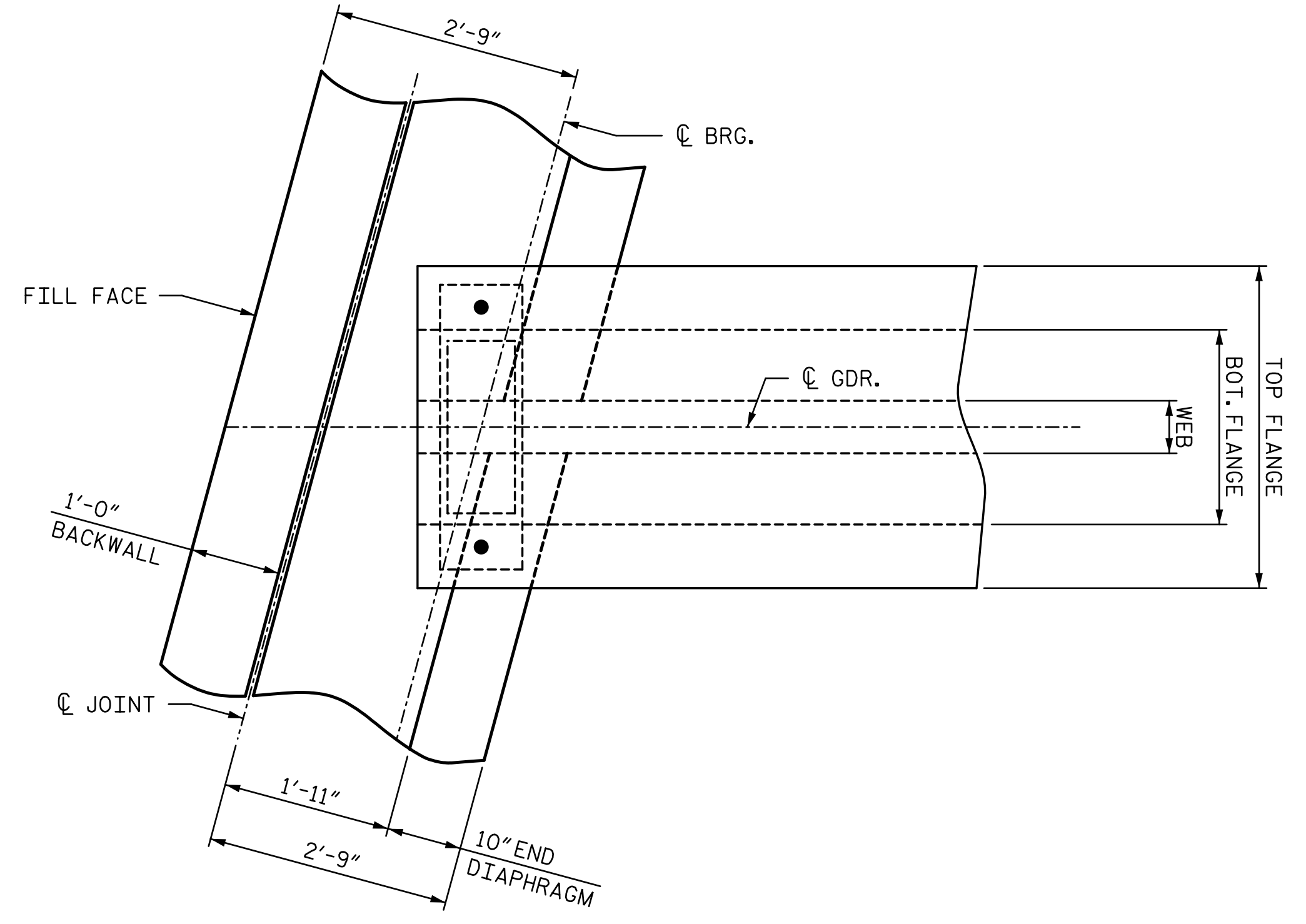
* #5G BAR MAY BE SHIFTED SLIGHTLY, AS NECESSARY, TO CLEAR REINFORCING STEEL AND STIRRUPS.



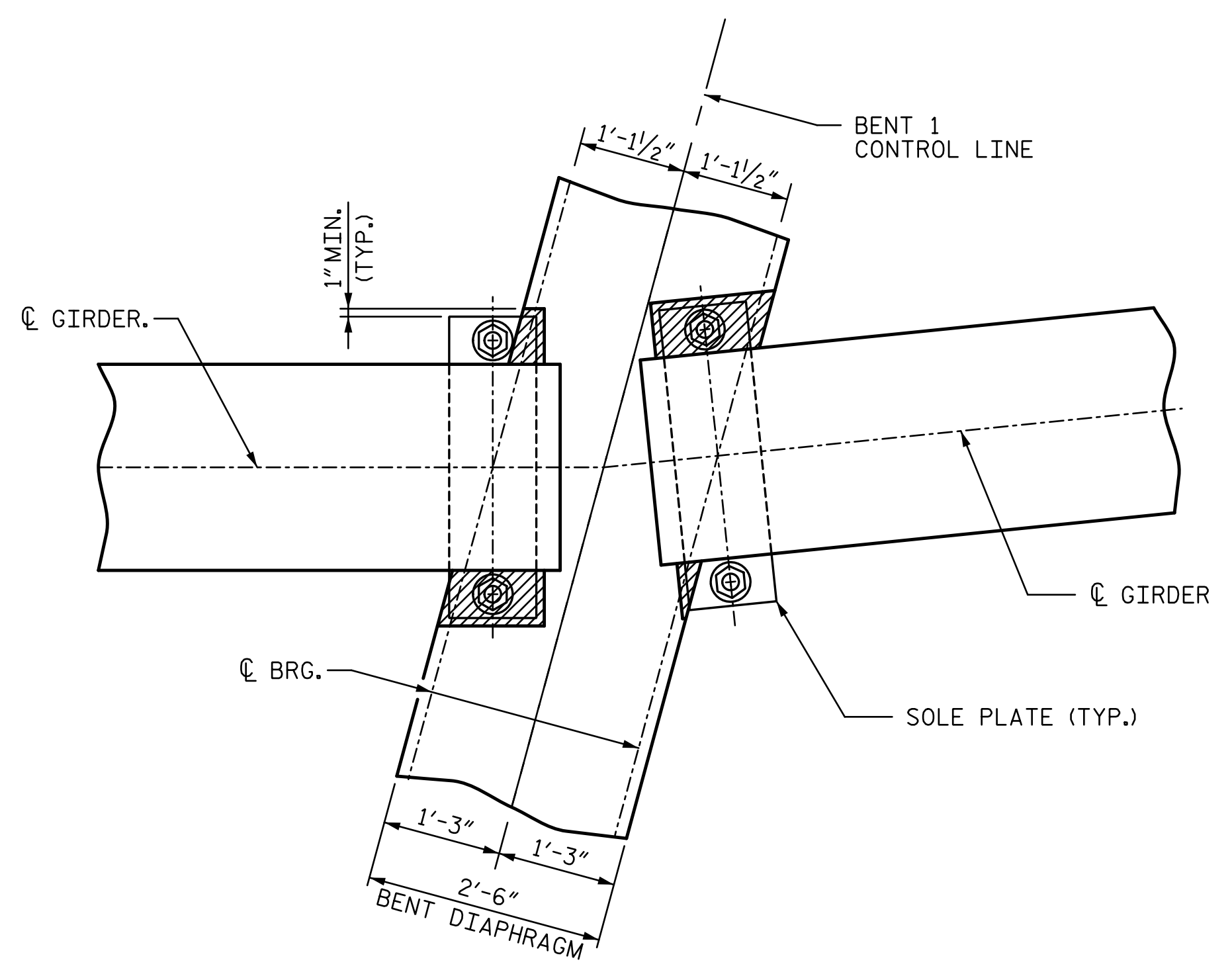
SECTION THRU BENT DIAPHRAGM



BENT DIAPHRAGM BLOCKOUT DETAILS
(PRESTRESSED GIRDERS WITH CONTINUOUS DECK SLAB)



PLAN AT END DIAPHRAGM



PLAN OF GIRDER AT BENT

PROJECT NO. U-4751
NEW HANOVER COUNTY
 STATION: 35+12.05 -Y8RPDB-
 SHEET 2 OF 2

DOCUMENT NOT CONSIDERED FINAL UNLESS ALL SIGNATURES COMPLETED		STATE OF NORTH CAROLINA DEPARTMENT OF TRANSPORTATION RALEIGH				SHEET NO. S4-7 TOTAL SHEETS 36	
		SUPERSTRUCTURE TYPICAL SECTION DETAILS					
		REVISIONS					
		NO.	BY:	DATE:	NO.	BY:	DATE:
		1			3		
		2			4		

r:\404_013_U4751_SML_TS01_007_640204.dgn
 6/30/2017 13:09:48
 +townsend

DRAWN BY: MBC DATE: 3-17 DESIGN ENGINEER OF RECORD: T. LAWS DATE: 5-17
 CHECKED BY: TRL DATE: 4-17