

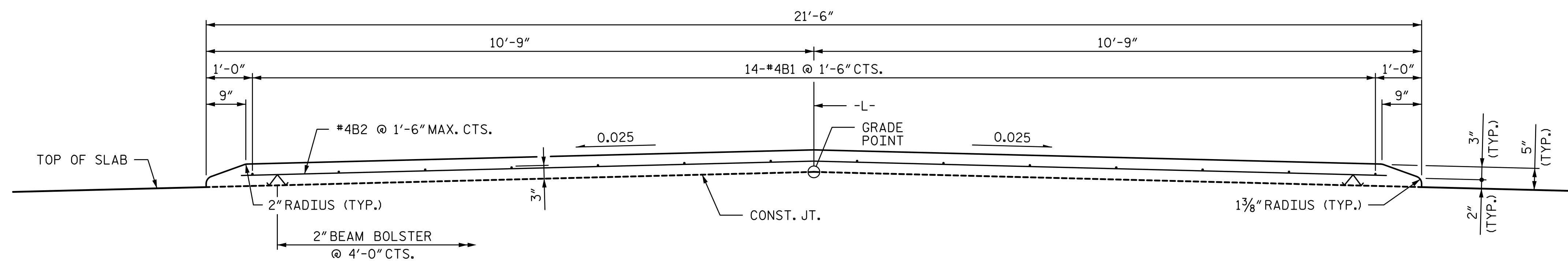
NOTES

NO SEPARATE MEASUREMENT OR PAYMENT WILL BE MADE FOR MATERIALS OR LABOR TO CONSTRUCT THE MONOLITHIC CONCRETE ISLAND. THE ENTIRE COST OF THIS WORK SHALL BE INCLUDED IN THE SQUARE FOOT PRICE BID FOR "REINFORCED CONCRETE DECK SLAB".

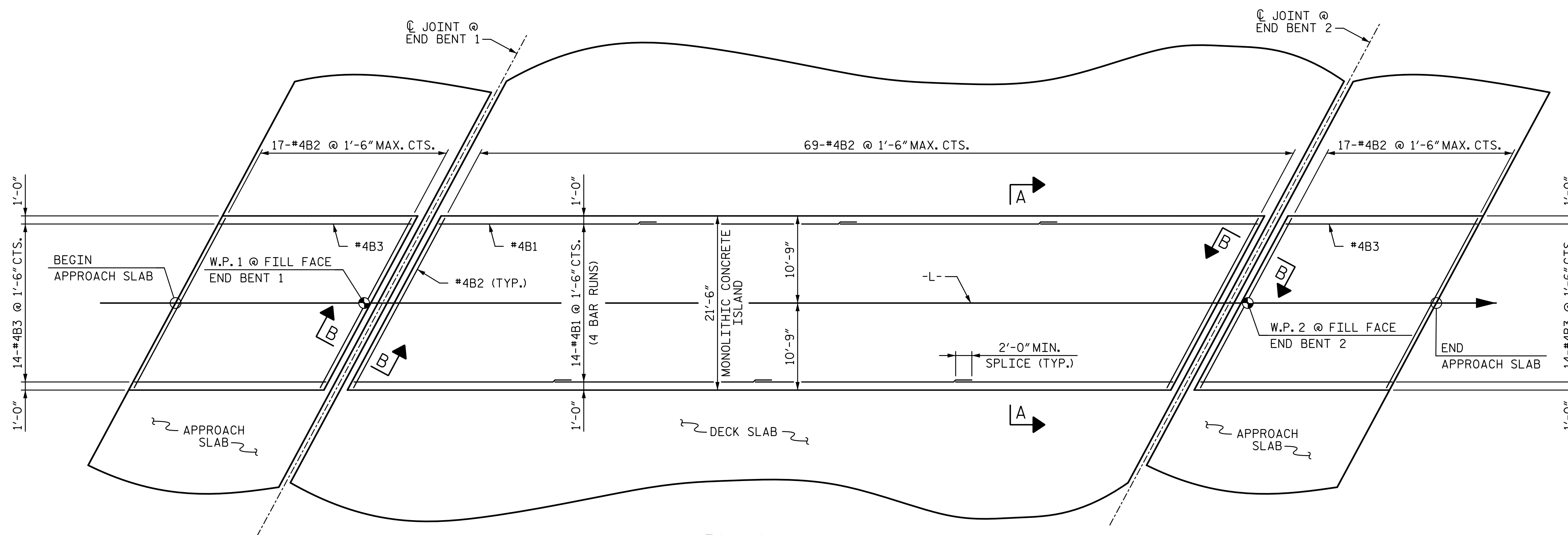
ALL REINFORCING STEEL IN MONOLITHIC CONCRETE ISLAND SHALL BE EPOXY COATED.

GROOVED CONTRACTION JOINTS, 1/2" IN DEPTH, SHALL BE TOOLED IN ALL EXPOSED FACES OF THE MONOLITHIC CONCRETE ISLAND IN ACCORDANCE WITH ARTICLE 825-10(B) OF THE STANDARD SPECIFICATIONS. THE CONTRACTION JOINTS SHALL BE LOCATED AT A SPACING OF 8 FEET TO 10 FEET BETWEEN EXPANSION JOINTS. NO CONTRACTION JOINTS WILL BE REQUIRED FOR SEGMENTS LESS THAN 10 FEET IN LENGTH.

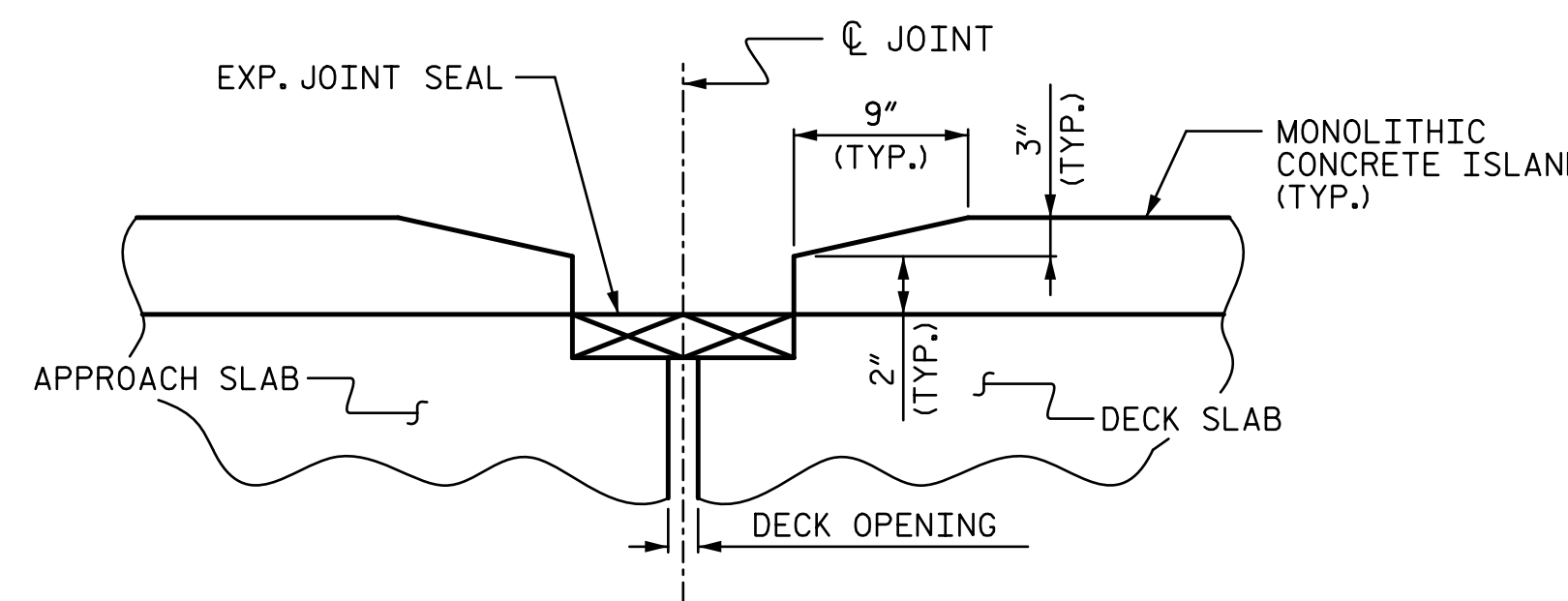
MONOLITHIC CONCRETE ISLAND SHALL NOT BE CAST UNTIL ALL SLAB CONCRETE HAS BEEN CAST AND HAS REACHED A MINIMUM COMPRESSIVE STRENGTH OF 3000 PSI.



SECTION A-A



PLAN



SECTION B-B

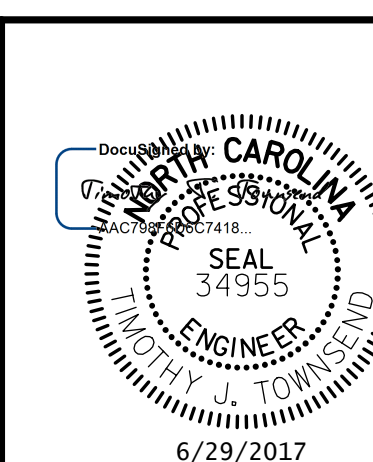
REINFORCING STEEL IN APPROACH SLAB, DECK SLAB AND MONOLITHIC CONCRETE ISLAND NOT SHOWN FOR CLARITY.

BILL OF MATERIAL FOR MONOLITHIC CONCRETE ISLAND

BAR	NO.	SIZE	TYPE	LENGTH	WEIGHT
* B1	56	#4	STR	26'-10"	1,004
* B2	103	#4	STR	22'-10"	1,571
* B3	28	#4	STR	23'-6"	440
* EPOXY COATED REINFORCING STEEL				3,015	LBS.
CLASS AA CONCRETE				49.4	CU. YDS.

PROJECT NO. U-4751
NEW HANOVER COUNTY
 STATION: 62+99.10 -L-

DOCUMENT NOT CONSIDERED FINAL UNLESS ALL SIGNATURES COMPLETED



STATE OF NORTH CAROLINA
 DEPARTMENT OF TRANSPORTATION
 RALEIGH

SUPERSTRUCTURE MONOLITHIC CONCRETE ISLAND

REVISIONS				SHEET NO.	
NO.	BY:	DATE:	NO.	BY:	DATE:
1			3		
2			4		

TOTAL SHEETS: 30

DRAWN BY: TJT DATE: 3-17 DESIGN ENGINEER OF RECORD: T. TOWNSEND DATE: 3-17
 CHECKED BY: AJP DATE: 4-17

R:\402_015_U4751_SML_MD_008_640202.dgn

13:58:57

6/27/2017

TTownsend