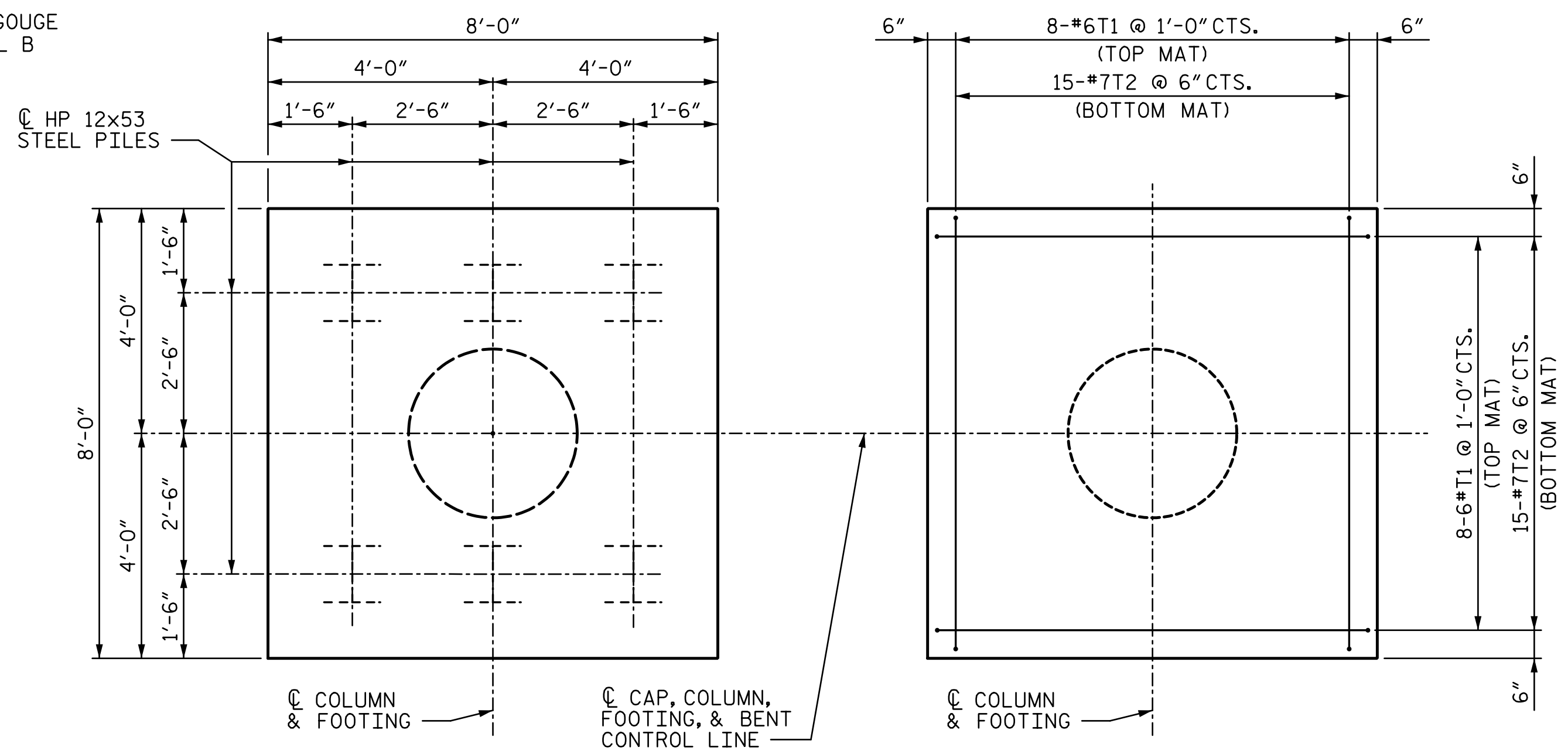
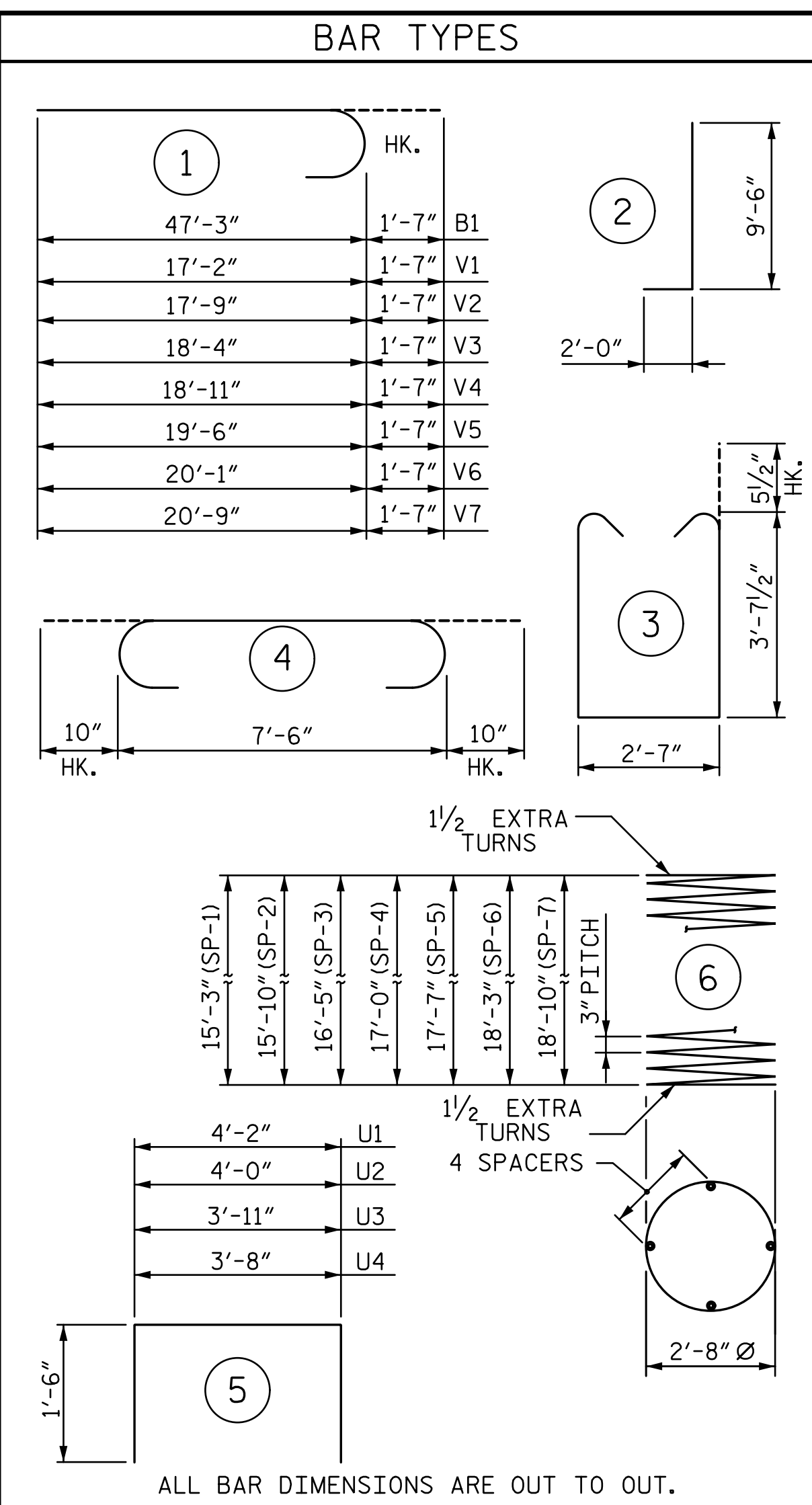


PILE SPLICE DETAILS

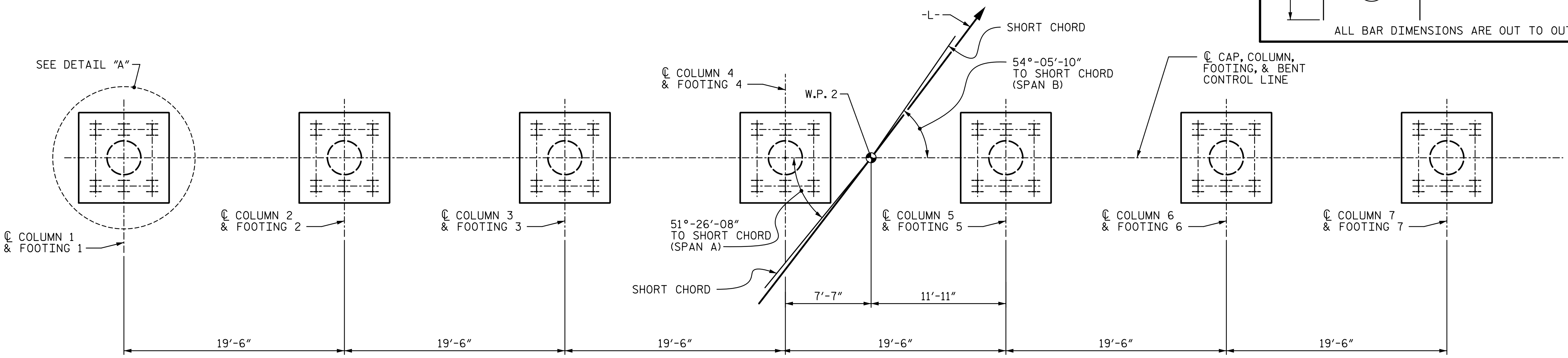


DETAIL "A" FOOTING REINFORCEMENT DETAIL



BILL OF MATERIAL					
BENT 1					
BAR	NO.	SIZE	TYPE	LENGTH	WEIGHT
B1	12	#11	1	48'-10"	3,113
B2	14	#11	STR	60'-0"	4,463
B3	16	#11	STR	45'-0"	3,825
B4	18	#5	STR	44'-5"	834
B5	6	#4	STR	10'-0"	40
B6	48	#4	STR	9'-1"	291
B7	6	#4	STR	5'-4"	21
M1	56	#11	2	11'-6"	3,422
S1	304	#5	3	10'-9"	3,409
T1	112	#6	STR	7'-8"	1,290
T2	210	#7	4	9'-2"	3,935
U1	121	#4	5	7'-2"	579
U2	8	#4	5	7'-0"	37
U3	4	#4	5	6'-11"	18
U4	4	#4	5	6'-8"	18
V1	8	#11	1	18'-9"	797
V2	8	#11	1	19'-4"	822
V3	8	#11	1	19'-11"	847
V4	8	#11	1	20'-6"	871
V5	8	#11	1	21'-1"	896
V6	8	#11	1	21'-8"	921
V7	8	#11	1	22'-4"	949
SP-1	1	**	6	528'-1"	353
SP-2	1	**	6	547'-7"	366
SP-3	1	**	6	566'-7"	378
SP-4	1	**	6	585'-10"	391
SP-5	1	**	6	605'-1"	404
SP-6	1	**	6	627'-1"	419
SP-7	1	**	6	646'-4"	432

QUANTITIES		
REINFORCING STEEL	LBS.	31,398
SPIRAL COLUMN REINFORCING STEEL	LBS.	2,743
CLASS A CONCRETE:		
POUR 1: FOOTINGS	C.Y.	49.8
POUR 2: COLUMNS	C.Y.	30.6
POUR 3: CAP	C.Y.	89.9
TOTAL	C.Y.	170.3
HP 12x53 STEEL PILES	NO.	42
	LIN. FEET	2,730
PILE SETUP FOR HP 12x53	EA.	42
PILE REDRIVES	EA.	21
FOUNDATION EXCAVATION	LUMP SUM	



PLAN OF FOOTINGS

(ALL FOOTINGS DIMENSIONS AND REINFORCING STEEL ARE TYPICAL)
(PILE ARRANGMENT FOR FOOTINGS ARE THE SAME)

* THE SP-1 TO SP-7 SPIRAL REINFORCING STEEL SHALL BE W20 OR D-20 COLD DRAWN WIRE OR #4 PLAIN OR DEFORMED BAR.

PROJECT NO. U-4751
NEW HANOVER COUNTY
STATION: 38+94.20 -L-
SHEET 3 OF 3

DOCUMENT NOT CONSIDERED FINAL UNLESS ALL SIGNATURES COMPLETED

STV ENGINEERS, INC. 100 Years
900 West Trade St., Suite 715
Charlotte, NC 28202
NC License Number F-5991

STATE OF NORTH CAROLINA
DEPARTMENT OF TRANSPORTATION
RALEIGH

SUBSTRUCTURE
BENT 1

REVISIONS				SHEET NO.
NO.	BY:	DATE:	NO.	DATE:
1			3	
2			4	

SHEET NO. S1-29
TOTAL SHEETS 36

R:\401_057_U4751_SMJ_BI_029_640201.dgn
 3:17:28 PM
 6/22/2017
 ch1kfhmb

DRAWN BY: VMW	DATE: 4-17	DESIGN ENGINEER OF RECORD: V. WU	DATE: 5-17
CHECKED BY: TJT	DATE: 4-17		