

BILL OF MATERIAL

BAR	NO.	SIZE	TYPE	LENGTH	WEIGHT	BAR	NO.	SIZE	TYPE	LENGTH	WEIGHT	BAR	NO.	SIZE	TYPE	LENGTH	WEIGHT
* A1	200	#5	STR.	60'-0"	12,516	A233	8	#5	STR.	7'-9"	65	* B1	140	#5	STR.	31'-9"	4,636
* A2	200	#5	STR.	44'-9"	9,335	A234	8	#5	STR.	6'-5"	54	* B2	140	#5	STR.	37'-7"	5,488
A11	200	#5	STR.	60'-0"	12,516	A235	6	#5	STR.	7'-0"	44	* B3	70	#7	STR.	60'-0"	8,585
A12	200	#5	STR.	44'-5"	9,265	A236	6	#5	STR.	4'-0"	25	* B4	67	#7	STR.	30'-0"	4,108
												* B5	67	#7	STR.	20'-0"	2,739
												B6	380	#5	STR.	48'-10"	19,355
* A101	8	#5	STR.	51'-11"	433	* A301	8	#5	STR.	52'-1"	435						
* A102	8	#5	STR.	50'-6"	421	* A302	8	#5	STR.	50'-7"	422						
* A103	8	#5	STR.	49'-2"	410	* A303	8	#5	STR.	49'-2"	410	* G1	3	#5	STR.	46'-0"	144
* A104	8	#5	STR.	47'-9"	398	* A304	8	#5	STR.	47'-8"	398	* G2	3	#5	STR.	43'-0"	135
* A105	8	#5	STR.	46'-4"	387	* A305	8	#5	STR.	46'-3"	386						
* A106	8	#5	STR.	44'-11"	375	* A306	8	#5	STR.	44'-9"	373	* J1	251	#4	8	1'-5"	238
* A107	8	#5	STR.	43'-7"	364	* A307	8	#5	STR.	43'-4"	362						
* A108	8	#5	STR.	42'-2"	352	* A308	8	#5	STR.	41'-10"	349	* K1	4	#8	1	18'-8"	199
* A109	8	#5	STR.	40'-9"	340	* A309	8	#5	STR.	40'-5"	337	* K2	4	#8	1	17'-8"	189
* A110	8	#5	STR.	39'-5"	329	* A310	8	#5	STR.	38'-11"	325	* K3	16	#8	2	30'-4"	1,296
* A111	8	#5	STR.	38'-0"	317	* A311	8	#5	STR.	37'-5"	312	* K4	16	#8	2	28'-8"	1,225
* A112	8	#5	STR.	36'-7"	305	* A312	8	#5	STR.	36'-0"	300	* K5	9	#6	STR.	8'-6"	115
* A113	8	#5	STR.	35'-3"	294	* A313	8	#5	STR.	34'-6"	288	* K6	9	#6	STR.	10'-6"	142
* A114	8	#5	STR.	33'-10"	282	* A314	8	#5	STR.	33'-1"	276	* K7	9	#6	STR.	12'-6"	169
* A115	8	#5	STR.	32'-6"	271	* A315	8	#5	STR.	31'-7"	264	* K8	9	#6	STR.	7'-9"	105
* A116	8	#5	STR.	31'-1"	259	* A316	8	#5	STR.	30'-1"	251	* K9	9	#6	STR.	9'-9"	132
* A117	8	#5	STR.	29'-9"	248	* A317	8	#5	STR.	28'-8"	239	* K10	9	#6	STR.	11'-9"	159
* A118	8	#5	STR.	28'-4"	236	* A318	8	#5	STR.	27'-2"	227	K12	18	#4	STR.	8'-8"	104
* A119	8	#5	STR.	26'-11"	225	* A319	8	#5	STR.	25'-8"	214	K13	72	#4	STR.	12'-1"	581
* A120	8	#5	STR.	25'-7"	213	* A320	8	#5	STR.	24'-2"	202	K14	18	#4	STR.	8'-4"	100
* A121	8	#5	STR.	24'-2"	202	* A321	8	#5	STR.	22'-9"	190	K15	12	#4	9	8'-3"	66
* A122	8	#5	STR.	22'-10"	191	* A322	8	#5	STR.	21'-3"	177	K16	48	#4	10	16'-7"	532
* A123	8	#5	STR.	21'-6"	179	* A323	8	#5	STR.	19'-9"	165						
* A124	8	#5	STR.	20'-1"	168	* A324	8	#5	STR.	18'-3"	152	* S1	153	#5	3	6'-0"	957
* A125	8	#5	STR.	18'-9"	156	* A325	8	#5	STR.	16'-10"	140	* S2	153	#4	4	7'-0"	715
* A126	8	#5	STR.	17'-4"	145	* A326	8	#5	STR.	15'-4"	128	* S3	54	#4	6	5'-0"	180
* A127	8	#5	STR.	16'-0"	134	* A327	8	#5	STR.	13'-10"	115	S4	369	#4	5	3'-7"	883
* A128	8	#5	STR.	14'-7"	122	* A328	8	#5	STR.	12'-4"	103	S5	18	#4	4	9'-2"	110
* A129	8	#5	STR.	13'-3"	111	* A329	8	#5	STR.	10'-9"	90						
* A130	8	#5	STR.	11'-11"	99	* A330	8	#5	STR.	8'-3"	69	U1	63	#4	7	15'-6"	652
* A131	8	#5	STR.	9'-5"	79	* A331	8	#5	STR.	6'-9"	56						
* A132	8	#5	STR.	8'-0"	67	* A332	8	#5	STR.	5'-3"	44						
* A133	8	#5	STR.	6'-8"	56	* A333	4	#5	STR.	5'-0"	21						
* A134	8	#5	STR.	5'-4"	45	* A334	3	#5	STR.	3'-6"	11						
* A135	4	#5	STR.	5'-0"	21	* A335	1	#6	STR.	17'-7"	26						
* A136	4	#5	STR.	3'-6"	15	* A336	1	#6	STR.	18'-7"	28						
* A137	1	#6	STR.	22'-4"	34	* A337	1	#6	STR.	19'-7"	29						
* A138	1	#6	STR.	23'-5"	35												
* A139	1	#6	STR.	24'-6"	37												
A201	8	#5	STR.	51'-11"	433	A401	8	#5	STR.	52'-1"	435						
A202	8	#5	STR.	50'-6"	421	A402	8	#5	STR.	50'-7"	422						
A203	8	#5	STR.	49'-2"	410	A403	8	#5	STR.	49'-2"	410						
A204	8	#5	STR.	47'-9"	398	A404	8	#5	STR.	47'-8"	398						
A205	8	#5	STR.	46'-4"	387	A405	8	#5	STR.	46'-3"	386						
A206	8	#5	STR.	44'-11"	375	A406	8	#5	STR.	44'-9"	373						
A207	8	#5	STR.	43'-7"	364	A407	8	#5	STR.	43'-4"	362						
A208	8	#5	STR.	42'-2"	352	A408	8	#5	STR.	41'-10"	349						
A209	8	#5	STR.	40'-9"	340	A409	8	#5	STR.	40'-5"	337						
A210	8	#5	STR.	39'-5"	329	A410	8	#5	STR.	38'-11"	325						
A211	8	#5	STR.	38'-0"	317	A411	8	#5	STR.	37'-5"	312						
A212	8	#5	STR.	36'-7"	305	A412	8	#5	STR.	36'-0"	300						
A213	8	#5	STR.	35'-3"	294	A413	8	#5	STR.	34'-6"	288						
A214	8	#5	STR.	33'-10"	282	A414	8	#5	STR.	33'-1"	276						
A215	8	#5	STR.	32'-6"	271	A415	8	#5	STR.	31'-7"	264						
A216	8	#5	STR.	31'-1"	259	A416	8	#5	STR.	30'-1"	251						
A217	8	#5	STR.	29'-9"	248	A417	8	#5	STR.	28'-8"	239						
A218	8	#5	STR.	28'-4"	236	A418	8	#5	STR.	27'-2"	227						
A219	8	#5	STR.	26'-11"	225	A419	8	#5	STR.	25'-8"	214						
A220	8	#5	STR.	25'-7"	213	A420	8	#5	STR.	24'-2"	202						
A221	8	#5	STR.	24'-2"	202	A421	8	#5	STR.	22'-9"	190						
A222	8	#5	STR.	22'-10"	191	A422	8	#5	STR.	21'-3"	177						
A223	8	#5	STR.	21'-6"	179	A423	8	#5	STR.	19'-9"	165						
A224	8	#5	STR.	20'-1"	168	A424	8	#5	STR.	18'-3"	152						
A225	8	#5	STR.	18'-9"	156	A425	8	#5	STR.	16'-10"	140						
A226	8	#5	STR.	17'-4"	145	A426	8	#5	STR.	15'-4"	128						
A227	8	#5	STR.	16'-0"	134	A427	8	#5	STR.	13'-10"	115						
A228	8	#5	STR.	14'-7"	122	A428	8	#5	STR.	12'-4"	103						
A229	8	#5	STR.	13'-3"	111	A429	8	#5	STR.	10'-9"	90						
A230	8	#5	STR.	11'-11"	99	A430	8	#5	STR.	9'-3"	77						
A231	8	#5	STR.	10'-5"	87	A431	8	#5	STR.	7'-9"	65						
A232	8	#5	STR.	9'-1"	76	A432	8	#5	STR.	6'-3"	52						
						A433	5	#5	STR.	7'-0"	37						
						A434	5	#5	STR.	4'-6"	23						

* EPOXY COATED REINFORCING STEEL 69,776 LBS.

REINFORCING STEEL 60,365 LBS.

SUPERSTRUCTURE REINFORCING STEEL LENGTHS ARE BASED ON THE FOLLOWING MINIMUM SPLICE LENGTHS

BAR SIZE	SUPERSTRUCTURE EXCEPT APPROACH SLABS, PARAPET, AND BARRIER RAIL		APPROACH SLABS		PARAPET AND BARRIER RAIL
	EPOXY COATED	UNCOATED	EPOXY COATED	UNCOATED	
#4	2'-0"	1'-9"	2'-0"	1'-9"	2'-9"
#5	2'-6"	2'-2"	2'-6"	2'-2"	3'-5"
#6	3'-0"	2'-7"	3'-10"	2'-7"	4'-4"
#7	5'-3"	3'-6"			
#8	6'-10"	4'-7"			

SUPERSTRUCTURE BILL OF MATERIAL

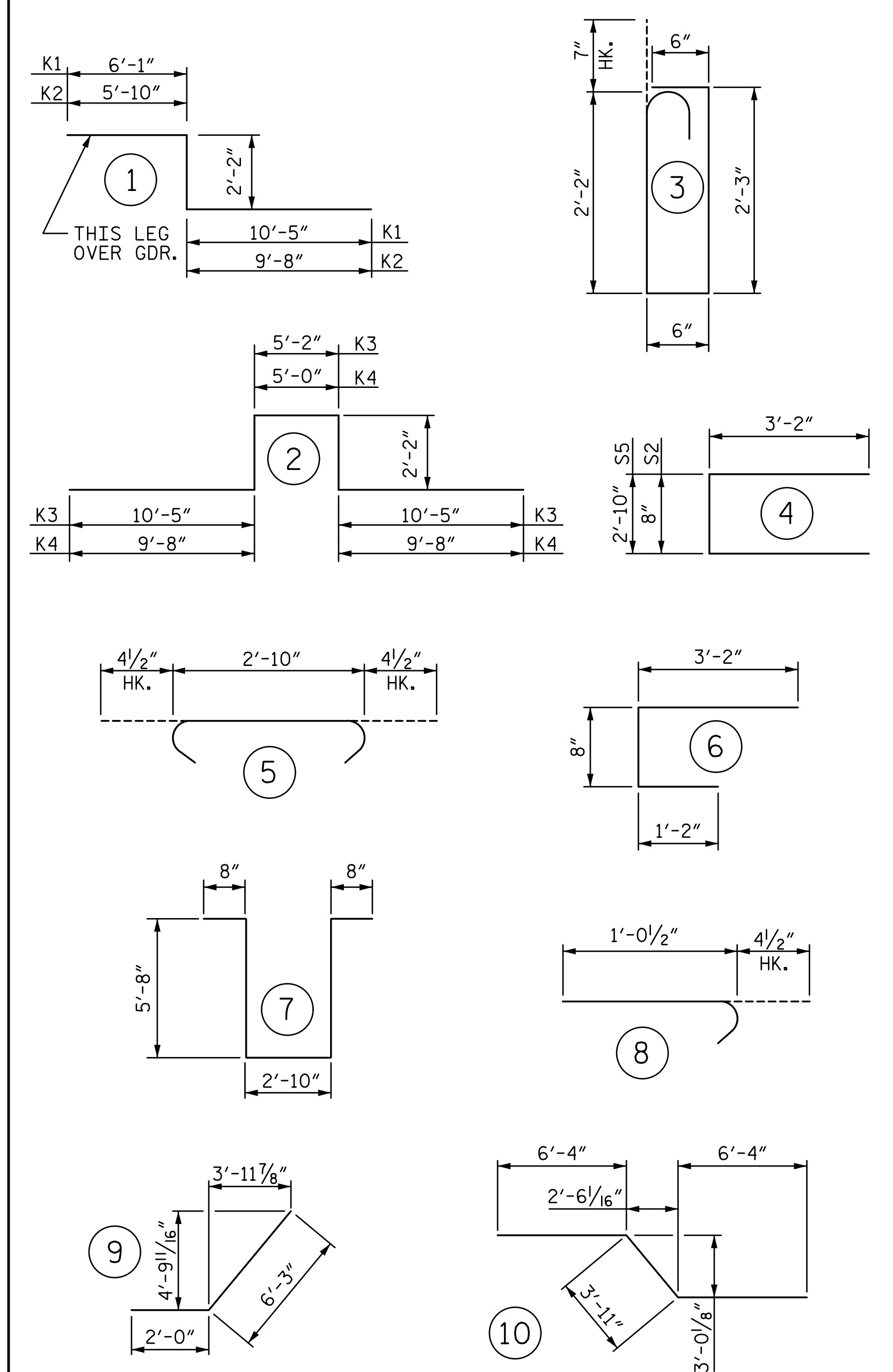
	CLASS AA CONCRETE (CU. YDS.)	EPOXY COATED REINFORCING STEEL (LBS.)	REINFORCING STEEL (LBS.)
POUR 1	223.4	--	--
POUR 2	263.5	--	--
POUR 3	154.1	--	--
POUR 4	31.0	--	--
POUR 5	28.8	--	--
TOTALS ●	700.8	69,776	60,365

● QUANTITIES FOR BARRIER RAIL AND CONCRETE ISLAND ARE NOT INCLUDED

GROOVING BRIDGE FLOORS

APPROACH SLABS	3,443	SQ.FT.
BRIDGE DECK	13,472	SQ.FT.
TOTAL	16,915	SQ.FT.

BAR TYPES



ALL BAR DIMENSIONS ARE OUT TO OUT

PROJECT NO. U-4751
NEW HANOVER COUNTY
 STATION: 38+94.20 -L-

DOCUMENT NOT CONSIDERED FINAL UNLESS ALL SIGNATURES COMPLETED		STATE OF NORTH CAROLINA DEPARTMENT OF TRANSPORTATION RALEIGH		SUPERSTRUCTURE BILL OF MATERIAL	SHEET NO. S1-24	
		REVISIONS				TOTAL SHEETS 36
		NO.	BY:			
1			3			
2			4			

DRAWN BY: VMW DATE: 4-17 DESIGN ENGINEER OF RECORD: T. TOWNSEND DATE: 5-17
 CHECKED BY: AJP DATE: 4-17