

NOTES

ALL PRESTRESSING STRANDS SHALL BE 7-WIRE LOW-RELAXATION GRADE 270 STRANDS AND SHALL CONFORM TO AASHTO M203 EXCEPT FOR SAMPLING REQUIREMENTS WHICH SHALL BE IN ACCORDANCE WITH THE STANDARD SPECIFICATIONS.

ALL REINFORCING STEEL SHALL BE GRADE 60.

APPLY EPOXY PROTECTIVE COATING TO END OF GIRDER SURFACES INDICATED IN ELEVATION VIEW.

EMBEDDED PLATE "B-1" SHALL BE GALVANIZED IN ACCORDANCE WITH THE STANDARD SPECIFICATIONS.

ANCHOR STUDS SHALL CONFORM TO AASHTO M169 GRADES 1010 THROUGH 1020 OR APPROVED EQUAL, AND SHALL MEET THE TYPE "B" REQUIREMENTS OF SUBSECTION 7.3 OF THE ANSI/AASHTO/AWS D1.5 BRIDGE WELDING CODE.

AT ENDS OF GIRDERS TO BE EMBEDDED IN CONCRETE DIAPHRAGMS OR END WALLS, PRESTRESSING STRANDS MAY EXTEND A MAXIMUM OF 2" BEYOND THE GIRDER ENDS. OTHERWISE, PRESTRESSING STRANDS SHALL BE CUT FLUSH WITH THE GIRDER ENDS.

THE TRANSFER OF LOAD FROM THE ANCHORAGES TO THE GIRDER SHALL BE DONE WHEN CONCRETE HAS REACHED A COMPRESSIVE STRENGTH OF NOT LESS THAN 6000 PSI.

DEPENDING ON THE TYPE OF SYSTEM USED TO SUPPORT THE DECK SLAB FORMS, PRESET ANCHORS MAY BE NECESSARY IN THE PRESTRESSED CONCRETE GIRDER.

THE TOP SURFACE OF THE GIRDER, EXCLUDING THE OUTSIDE 4", SHALL BE RAKED TO A DEPTH OF 1/4".

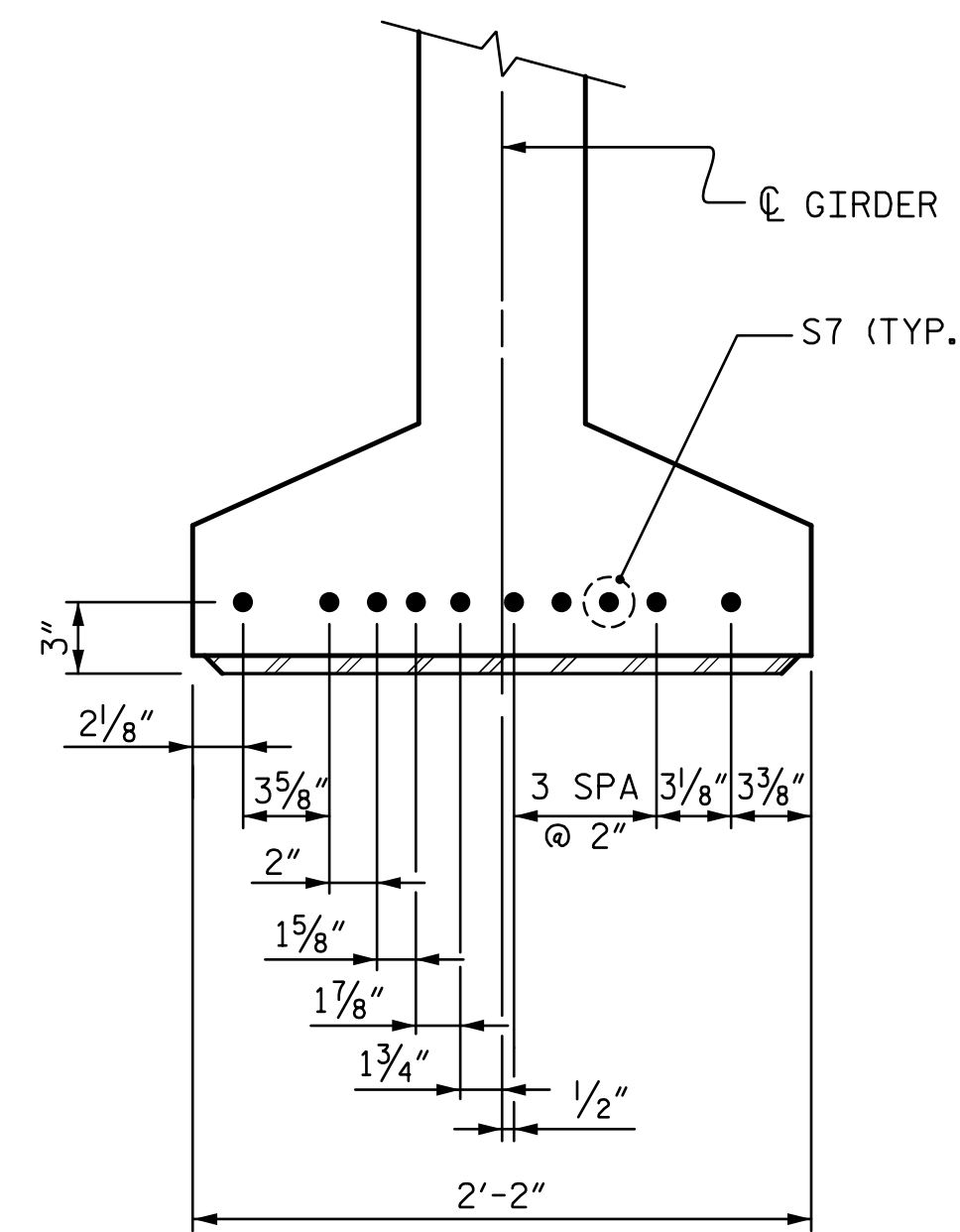
WHEN DRAPED STRANDS ARE DETAILED, THE LONGITUDINAL LOCATION OF THE HOLD DOWN DEVICES SHALL BE WITHIN 6" OF THE LOCATION SHOWN AND THE CENTER OF GRAVITY OF THE GROUP OF DRAPED STRANDS SHALL BE LOCATED WITHIN 1/2" OF THE THEORETICAL LOCATION SHOWN.

A 2" x 2" CHAMFER IS ALLOWED AT THE INTERSECTION OF THE WEB AND THE BOTTOM FLANGE OF THE 63" AND 72" MODIFIED BULB TEES ONLY.

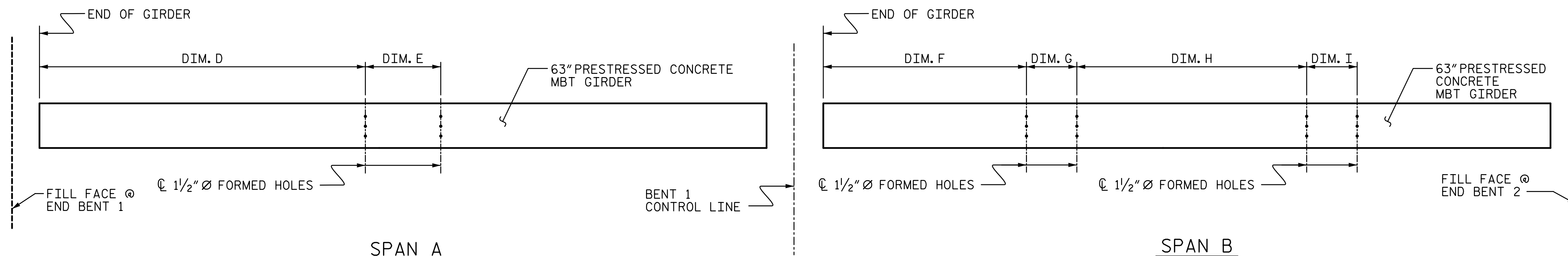
THE CONTRACTOR HAS THE OPTION TO PROVIDE, AT NO ADDITIONAL COST TO THE DEPARTMENT, 2 ADDITIONAL STRANDS AT THE TOP OF THE GIRDER TO FACILITATE TYING OF THE REINFORCING STEEL. THESE STRANDS SHALL BE PULLED TO A LOAD OF 4500 lbs.

FOR EMBEDDED CLIPS FOR PRESTRESSED CONCRETE MEMBERS, SEE SPECIAL PROVISIONS.

GIRDER TABLE															
GDR.	DIM. A	DIM. B	DIM. C	QUANTITIES FOR ONE GIRDER								GIRDERS REQ'D			
				S1 BAR		S6 BAR		S9 BAR		REINFORCING STEEL (LBS)	7500 PSI CONCRETE (C.Y.)	0.6" Ø L.R. STRANDS	NO. OF GDR.	TOTAL LENGTH	
				"X" SPA.	NO.	WEIGHT (LBS)	NO.	WEIGHT (LBS)	"Y" NO.	WEIGHT (LBS)					
A1	86'-3"	43'-1 1/2"	1'-5"	6	206	837	230	1,040	6	20	2,461	17.1	26	1	86'-3"
A2	85'-11 1/8"	42'-11 3/16"	1'-3 1/16"	6	206	837	230	1,040	6	20	2,550	17.0	26	1	85'-11 1/8"
A3	85'-7 1/2"	42'-9 3/4"	1'-1 1/4"	6	206	837	230	1,040	6	20	2,550	17.0	26	1	85'-7 1/2"
A4	85'-3 3/8"	42'-7 15/16"	1'-11 1/16"	5	204	829	228	1,030	5	17	2,529	16.9	26	1	85'-3 3/8"
A5	85'-0 3/8"	42'-6 3/16"	1'-9 11/16"	5	204	829	228	1,030	5	17	2,529	16.8	26	1	85'-0 3/8"
A6	84'-8 7/8"	42'-4 7/16"	1'-7 5/16"	5	204	829	228	1,030	5	17	2,529	16.8	26	1	84'-8 7/8"
A7	84'-5 5/8"	42'-2 13/16"	1'-6 5/16"	5	204	829	228	1,030	5	17	2,529	16.7	26	1	84'-5 5/8"
A8	84'-2 3/8"	42'-1 3/16"	1'-4 11/16"	5	204	829	228	1,030	5	17	2,529	16.7	26	1	84'-2 3/8"
A9	83'-11 1/4"	41'-11 5/8"	1'-3 3/8"	5	204	829	228	1,030	5	17	2,529	16.6	26	1	83'-11 1/4"
A10	83'-8 1/8"	41'-10 1/16"	1'-1 3/16"	5	204	829	228	1,030	5	17	2,440	16.6	26	1	83'-8 1/8"
B1	98'-0 1/2"	49'-0 1/4"	1'-5 3/4"	11	232	943	256	1,157	11	37	2,785	19.4	34	1	98'-0 1/2"
B2	97'-8 7/8"	48'-10 10/16"	1'-3 5/16"	11	232	943	256	1,157	11	37	2,955	19.4	34	1	97'-8 7/8"
B3	97'-5 1/2"	48'-8 3/4"	1'-2 1/4"	11	232	943	256	1,157	11	37	2,955	19.3	34	1	97'-5 1/2"
B4	97'-2 1/8"	48'-7 1/16"	1'-0 9/16"	11	232	943	256	1,157	11	37	2,955	19.2	34	1	97'-2 1/8"
B5	96'-10 3/4"	48'-5 3/8"	1'-10 7/8"	10	230	935	254	1,148	10	34	2,935	19.2	34	1	96'-10 3/4"
B6	96'-7 5/8"	48'-3 13/16"	1'-9 5/16"	10	230	935	254	1,148	10	34	2,935	19.1	34	1	96'-7 5/8"
B7	96'-4 3/8"	48'-2 3/16"	1'-7 11/16"	10	230	935	254	1,148	10	34	2,935	19.1	34	1	96'-4 3/8"
B8	96'-1 3/8"	48'-0 1/16"	1'-6 3/16"	10	230	935	254	1,148	10	34	2,935	19.0	34	1	96'-1 3/8"
B9	95'-10 3/8"	47'-11 3/16"	1'-4 11/16"	10	230	935	254	1,148	10	34	2,935	19.0	34	1	95'-10 3/8"
B10	95'-7 1/2"	47'-9 3/4"	1'-3 1/4"	10	230	935	254	1,148	10	34	2,765	18.9	34	1	95'-7 1/2"



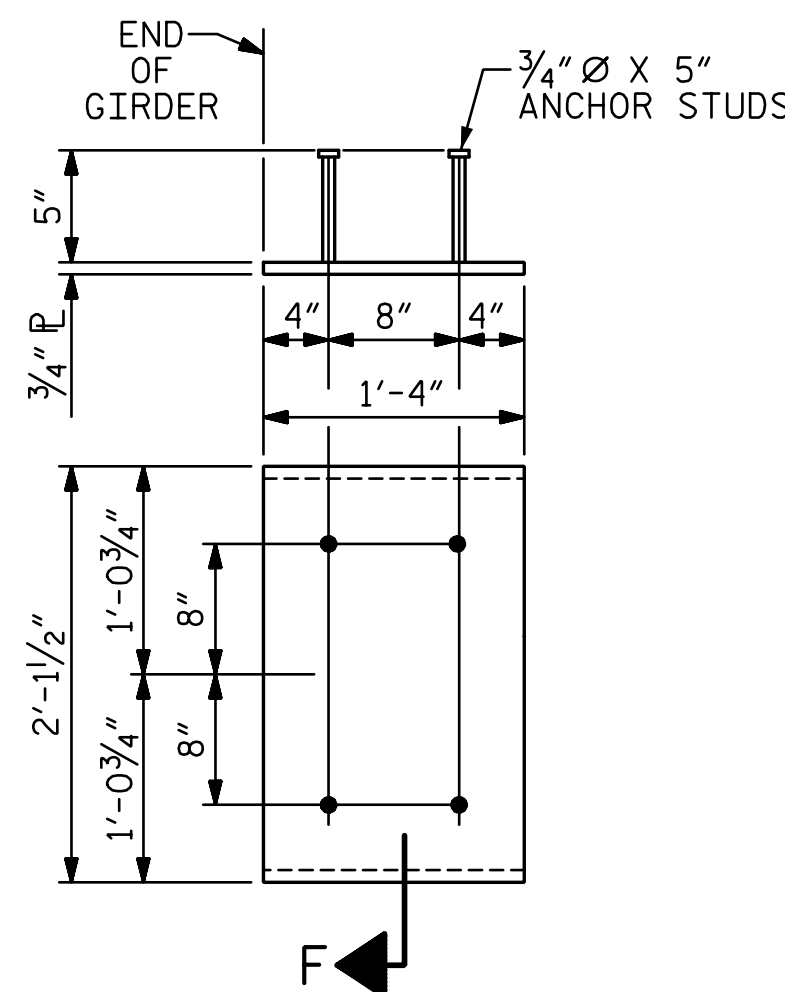
DETAIL "C"



FORMED HOLES LOCATION FOR INTERMEDIATE STEEL DIAPHRAGMS

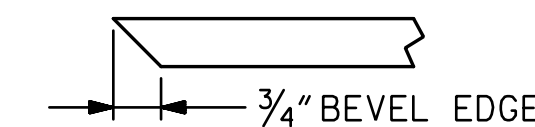
SPAN A DIMENSIONS TABLE		
GDR.	DIM. D	DIM. E
A1	47'-6 1/16"	-
A2	38'-6 3/8"	8'-10"
A3	38'-5"	8'-9 1/16"
A4	38'-3 5/8"	8'-8 1/8"
A5	38'-2 3/8"	8'-7 3/16"
A6	38'-1 1/16"	8'-6 5/16"
A7	37'-11 1/8"	8'-5 1/16"
A8	37'-10 1/16"	8'-4 5/8"
A9	37'-9 1/2"	8'-3 3/4"
A10	37'-8 3/8"	-

SPAN B DIMENSIONS TABLE				
GDR.	DIM. F	DIM. G	DIM. H	DIM. I
B1	36'-11 3/16"	-	32'-1 1/8"	-
B2	28'-9 3/16"	8'-0 13/16"	24'-1 1/8"	7'-11 5/8"
B3	28'-8 7/16"	8'-0"	24'-0 3/4"	7'-10 13/16"
B4	28'-7 3/4"	7'-11 3/16"	24'-0 7/16"	7'-10 1/16"
B5	28'-7 1/16"	7'-10 3/8"	24'-0 1/16"	7'-9 5/16"
B6	28'-6 3/8"	7'-9 5/8"	23'-11 3/4"	7'-8 9/16"
B7	28'-5 1/16"	7'-8 7/8"	23'-11 7/16"	7'-7 13/16"
B8	28'-5 1/16"	7'-8 1/8"	23'-11 3/16"	7'-7 1/8"
B9	28'-4 3/8"	7'-7 1/16"	23'-10 7/8"	7'-6 7/16"
B10	28'-3 13/16"	-	31'-5 5/16"	-



EMBEDDED PLATE "B-1" DETAILS

(2 REQ'D PER GIRDER)



SECTION "F"

(SEE NOTES)

PROJECT NO. U-4751  
NEW HANOVER COUNTY  
 STATION: 38+94.20 -L-  
 SHEET 3 OF 3

DOCUMENT NOT CONSIDERED FINAL UNLESS ALL SIGNATURES COMPLETED		STATE OF NORTH CAROLINA DEPARTMENT OF TRANSPORTATION RALEIGH		SUPERSTRUCTURE <b>63" PRESTRESSED CONCRETE                  MODIFIED BULB TEE                  GIRDER DETAILS</b>	SHEET NO. S1-15 TOTAL SHEETS 36
		REVISIONS			
		NO.	BY:		
1			3		
2			4		