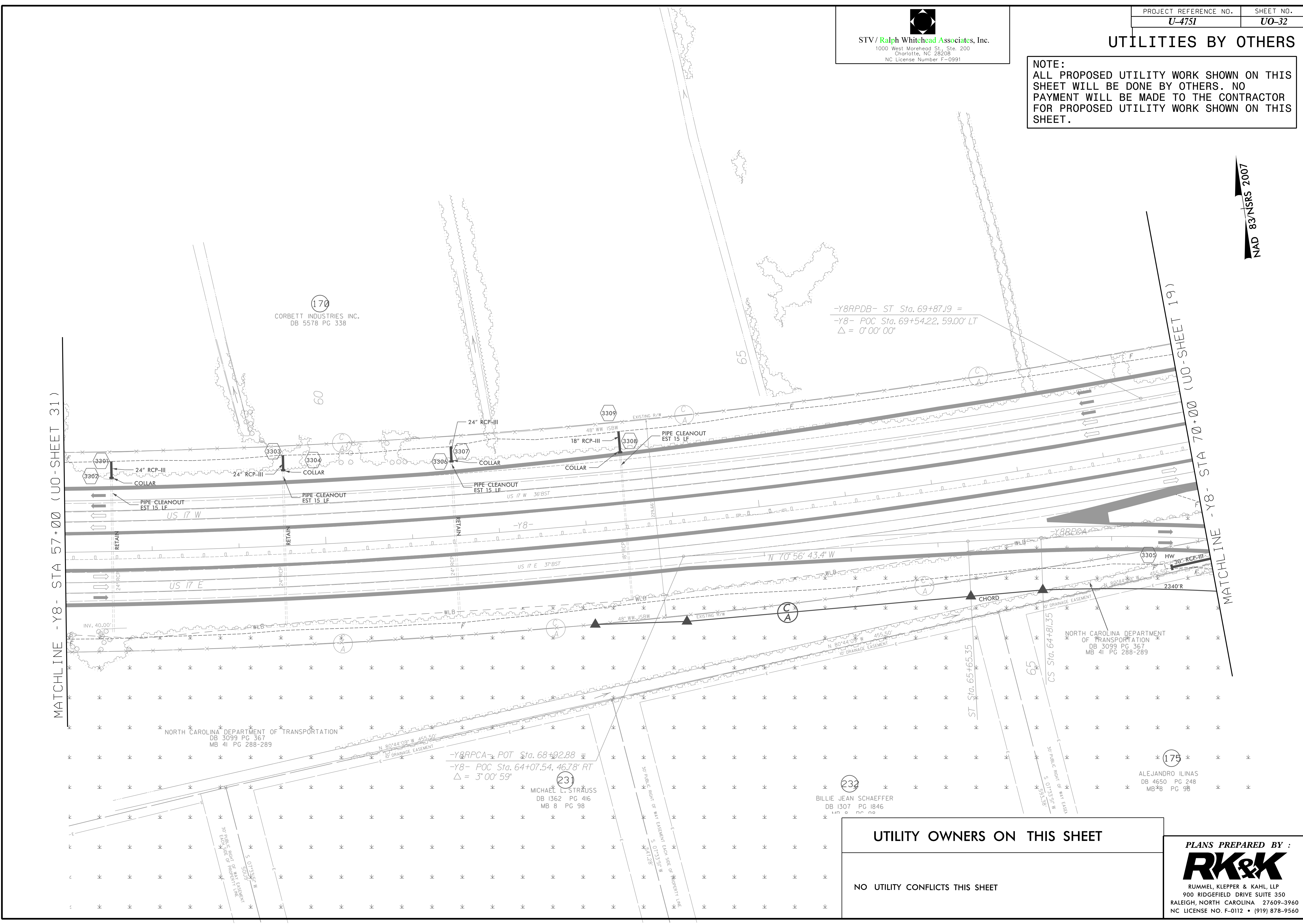


STV / Ralph Whitehead Associates, Inc.  
 1000 West Morehead St., Ste. 200  
 Charlotte, NC 28208  
 NC License Number F-0991

UTILITIES BY OTHERS

NOTE:  
 ALL PROPOSED UTILITY WORK SHOWN ON THIS SHEET WILL BE DONE BY OTHERS. NO PAYMENT WILL BE MADE TO THE CONTRACTOR FOR PROPOSED UTILITY WORK SHOWN ON THIS SHEET.

NAD 83/NSRS 2007



MATCHLINE -Y8- STA 57+00 (UO-SHEET 31)

MATCHLINE -Y8- STA 70+00 (UO-SHEET 19)

170  
 CORBETT INDUSTRIES INC.  
 DB 5578 PG 338

-Y8RPDB- ST Sta. 69+87.19 =  
 -Y8- POC Sta. 69+54.22, 59.00' LT  
 $\Delta = 0' 00' 00''$

NORTH CAROLINA DEPARTMENT OF TRANSPORTATION  
 DB 3099 PG 367  
 MB 41 PG 288-289

NORTH CAROLINA DEPARTMENT OF TRANSPORTATION  
 DB 3099 PG 367  
 MB 41 PG 288-289

-Y8RPCA- POT Sta. 68+92.88  
 -Y8- POC Sta. 64+07.54, 46.78' RT  
 $\Delta = 3' 00' 59''$

231  
 MICHAEL L. STRAUSS  
 DB 1362 PG 416  
 MB 8 PG 98

232  
 BILLIE JEAN SCHAEFFER  
 DB 1307 PG 1846

175  
 ALEJANDRO ILINAS  
 DB 4650 PG 248  
 MB 38 PG 98

UTILITY OWNERS ON THIS SHEET

NO UTILITY CONFLICTS THIS SHEET

PLANS PREPARED BY :  
**RK&K**  
 RUMMEL, KLEPPER & KAHL, LLP  
 900 RIDGEFIELD DRIVE SUITE 350  
 RALEIGH, NORTH CAROLINA 27609-3960  
 NC LICENSE NO. F-0112 • (919) 878-9560