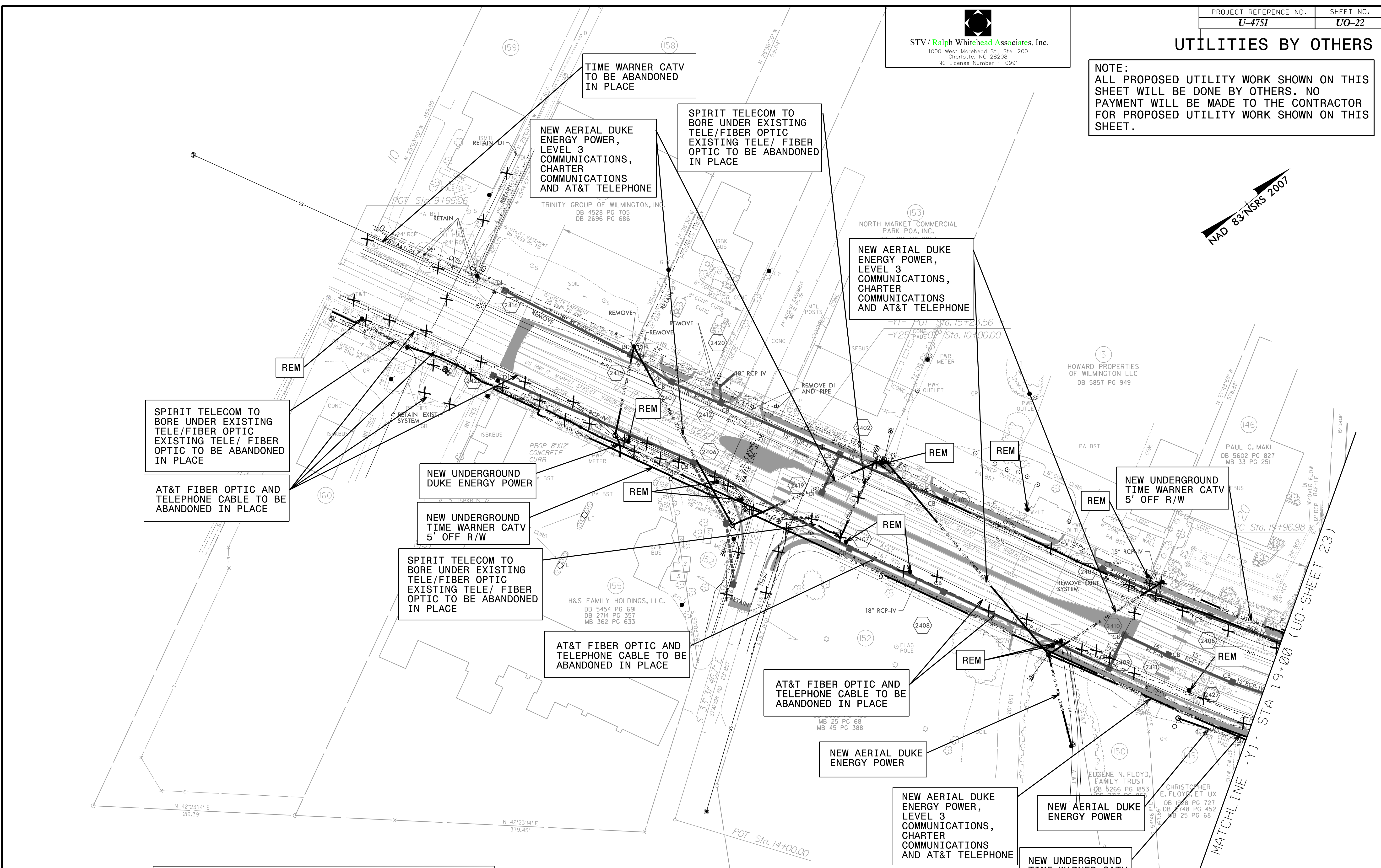
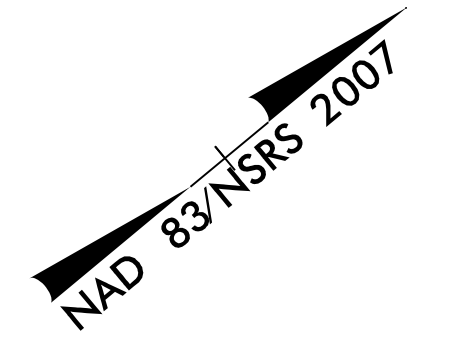



STV / Ralph Whitehead Associates, Inc.
 1000 West Morehead St., Ste. 200
 Charlotte, NC 28208
 NC License Number F-0991

UTILITIES BY OTHERS

NOTE:
 ALL PROPOSED UTILITY WORK SHOWN ON THIS SHEET WILL BE DONE BY OTHERS. NO PAYMENT WILL BE MADE TO THE CONTRACTOR FOR PROPOSED UTILITY WORK SHOWN ON THIS SHEET.



<p>PLANS PREPARED BY :</p>  <p>RUMMEL, KLEPPER & KAHL, LLP 900 RIDGEFIELD DRIVE SUITE 350 RALEIGH, NORTH CAROLINA 27609-3960 NC LICENSE NO. F-0112 • (919) 878-9560</p>	<p>UTILITY OWNERS ON THIS SHEET</p> <p>DUKE ENERGY – POWER (DIST) AT&T TELECOMMUNICATIONS – TELEPHONE AND FIBER OPTICS CHARTER COMMUNICATIONS – CATV LEVEL 3 – FIBER OPTIC TIME WARNER – CATV SPIRIT COMMUNICATIONS – FIBER OPTIC CENTURYLINK – TELECOMMUNICATIONS FIBER OPTIC</p>
---	---