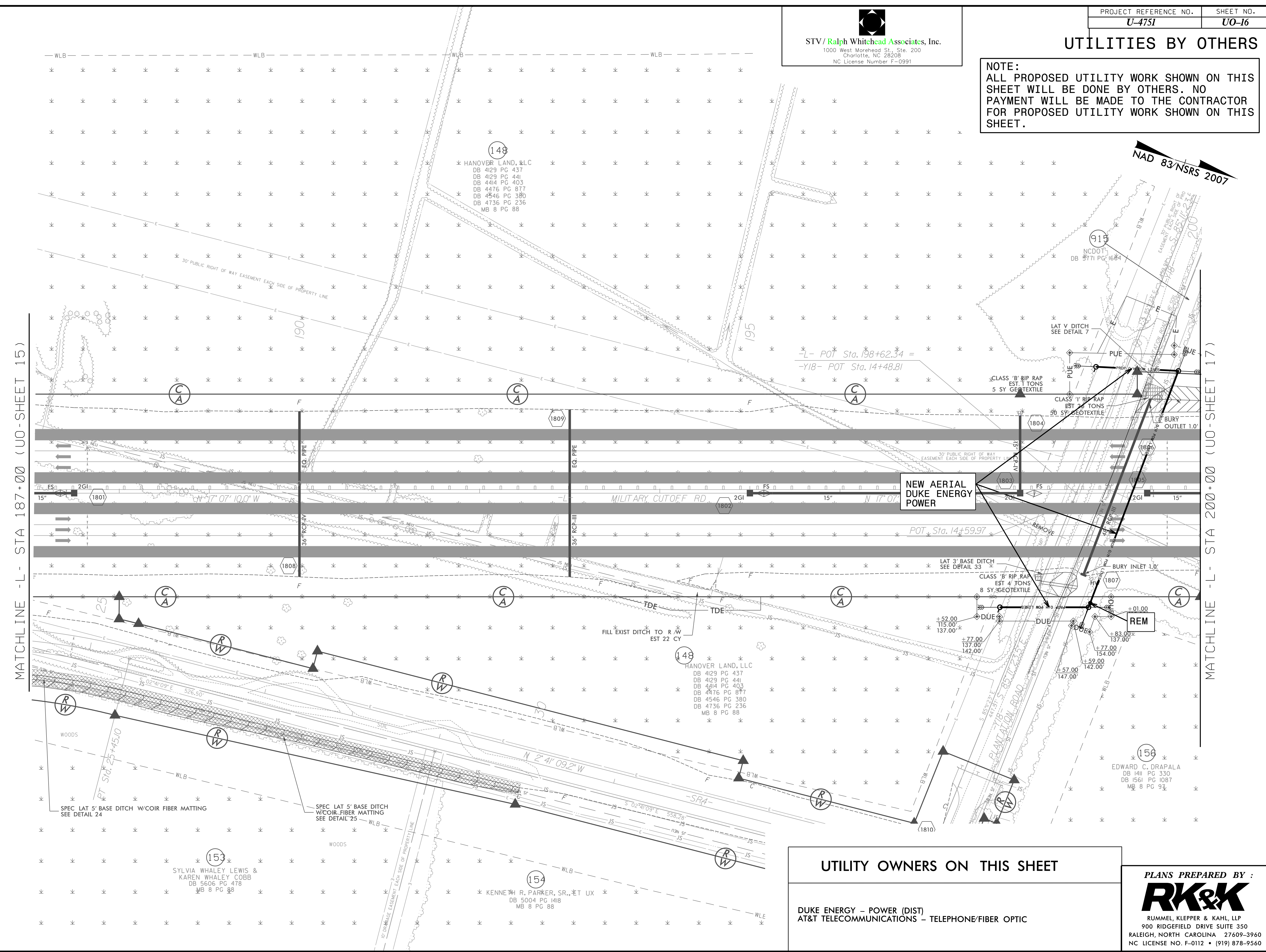


UTILITIES BY OTHERS

NOTE:
 ALL PROPOSED UTILITY WORK SHOWN ON THIS SHEET WILL BE DONE BY OTHERS. NO PAYMENT WILL BE MADE TO THE CONTRACTOR FOR PROPOSED UTILITY WORK SHOWN ON THIS SHEET.



MATCHLINE - L - STA 187+00 (UO-SHEET 15)

MATCHLINE - L - STA 200+00 (UO-SHEET 17)

NEW AERIAL DUKE ENERGY POWER

UTILITY OWNERS ON THIS SHEET

DUKE ENERGY - POWER (DIST)
 AT&T TELECOMMUNICATIONS - TELEPHONE/FIBER OPTIC

PLANS PREPARED BY :

 RUMMEL, KLEPPER & KAHL, LLP
 900 RIDGEFIELD DRIVE SUITE 350
 RALEIGH, NORTH CAROLINA 27609-3960
 NC LICENSE NO. F-0112 • (919) 878-9560