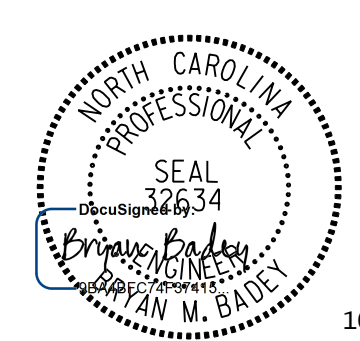
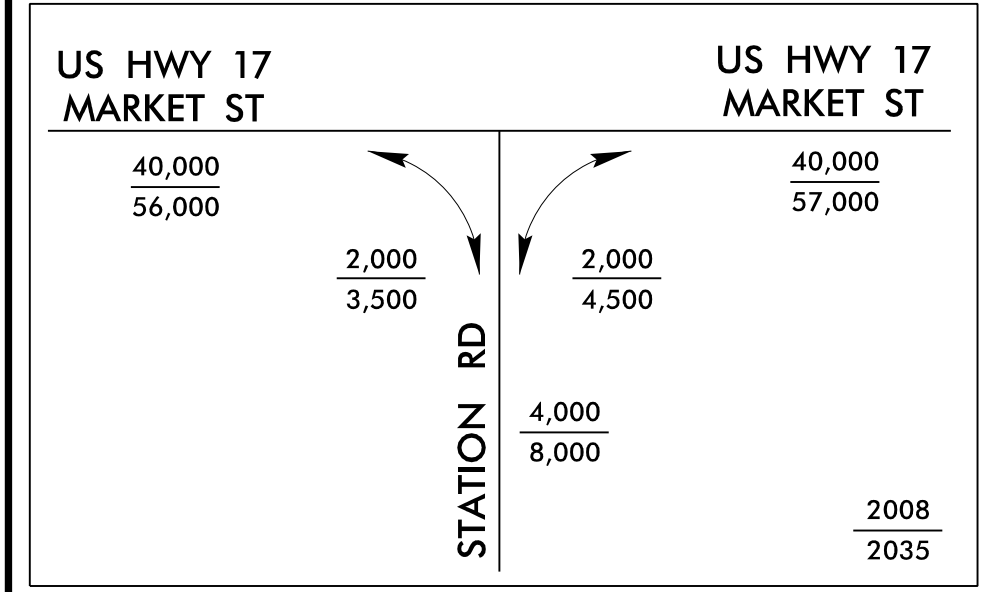
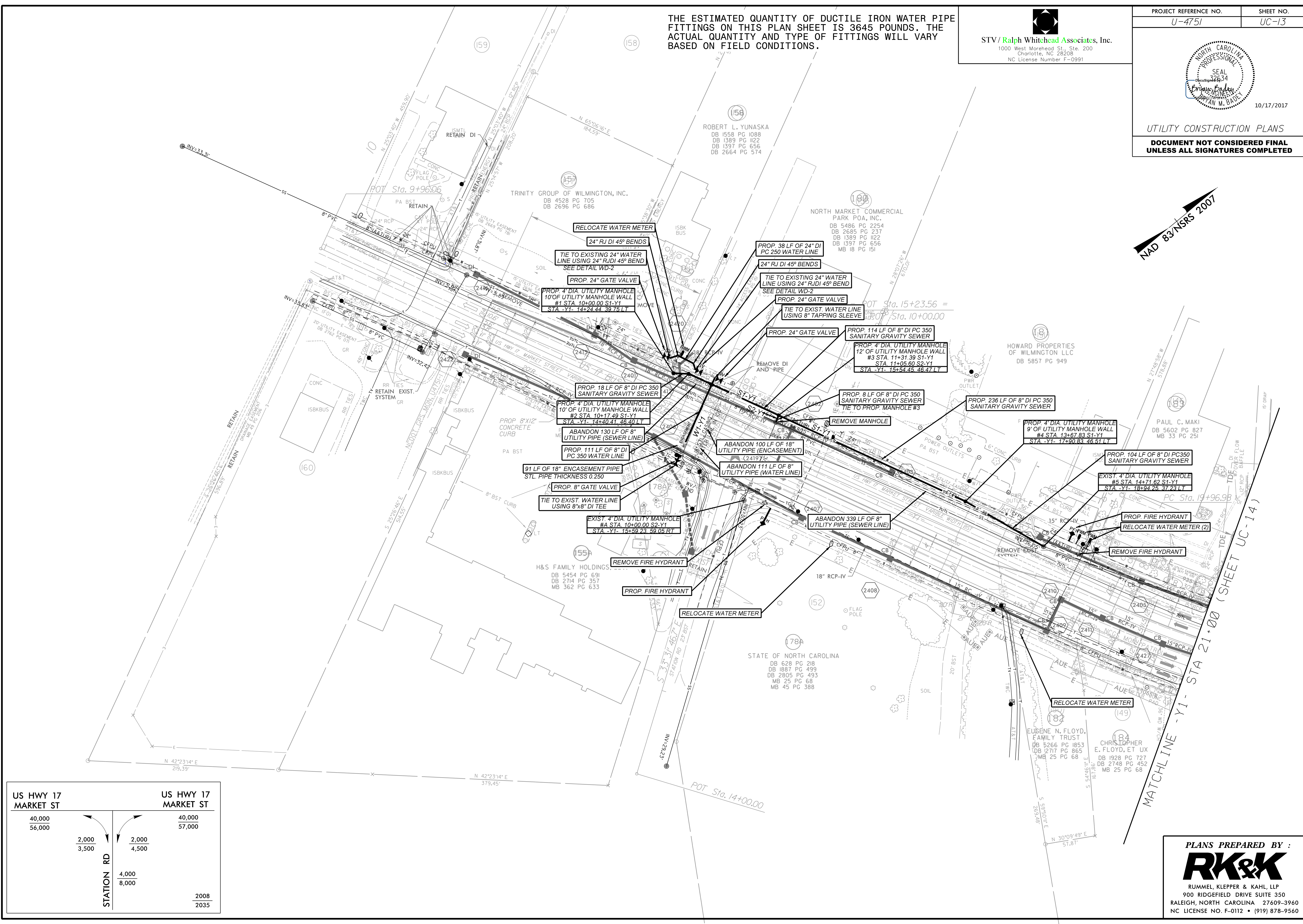
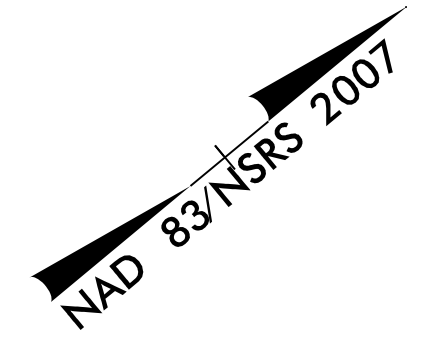


THE ESTIMATED QUANTITY OF DUCTILE IRON WATER PIPE FITTINGS ON THIS PLAN SHEET IS 3645 POUNDS. THE ACTUAL QUANTITY AND TYPE OF FITTINGS WILL VARY BASED ON FIELD CONDITIONS.

STV / Ralph Whitehead Associates, Inc.
 1000 West Morehead St., Ste. 200
 Charlotte, NC 28208
 NC License Number F-0991

PROJECT REFERENCE NO. U-4751	SHEET NO. UC-13
---------------------------------	--------------------


 10/17/2017
 UTILITY CONSTRUCTION PLANS
**DOCUMENT NOT CONSIDERED FINAL
 UNLESS ALL SIGNATURES COMPLETED**



PLANS PREPARED BY :

 RUMMEL, KLEPPER & KAHL, LLP
 900 RIDGFIELD DRIVE SUITE 350
 RALEIGH, NORTH CAROLINA 27609-3960
 NC LICENSE NO. F-0112 • (919) 878-9560