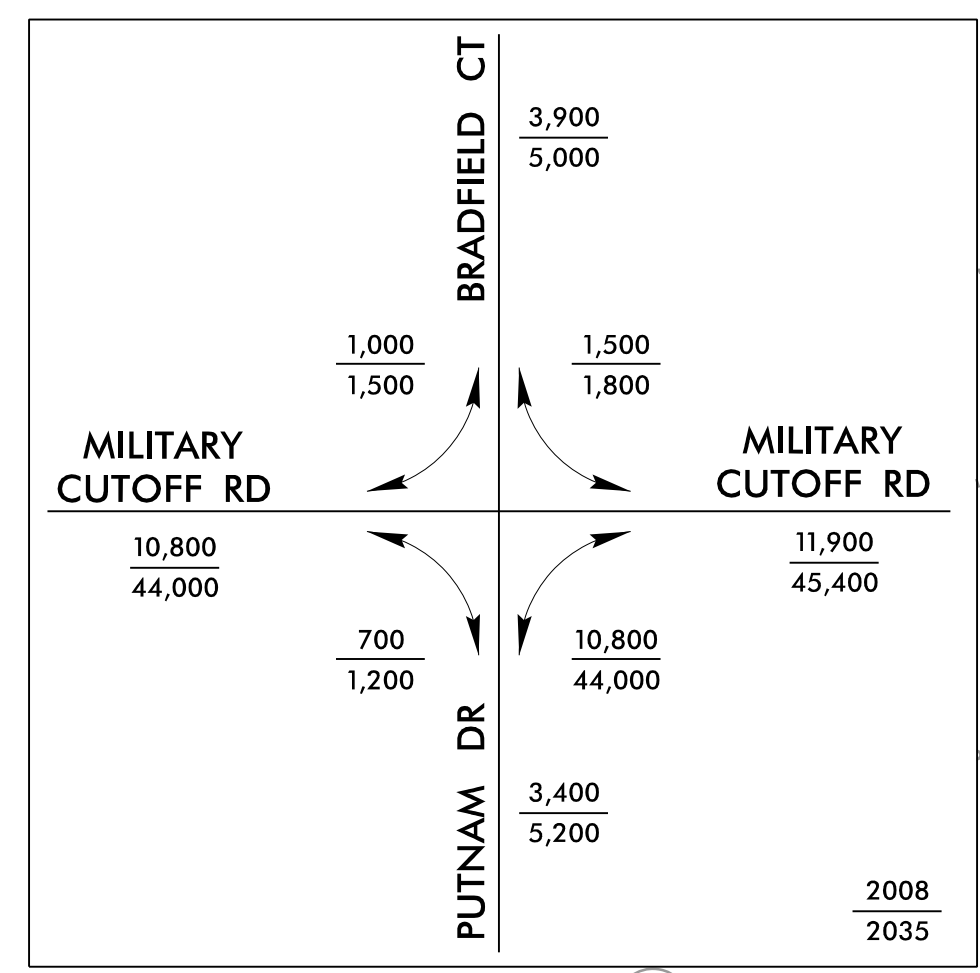


STV/Ralph Whitehead Associates, Inc.
1000 West Morehead St., Ste. 200
Charlotte, NC 28208
NC License Number F-0991

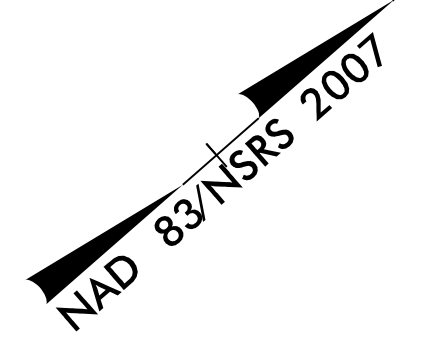
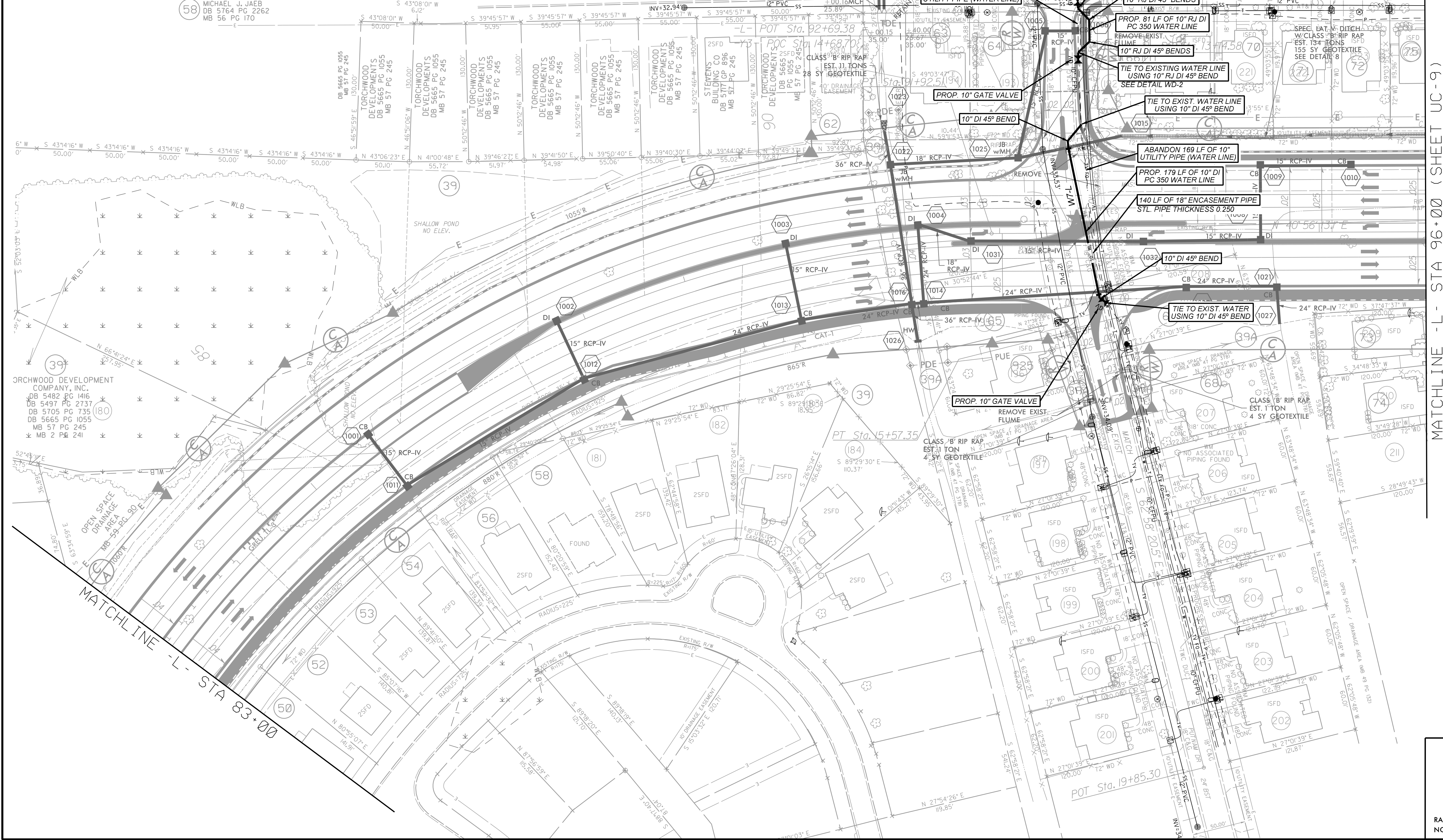


UTILITY CONSTRUCTION PLANS
DOCUMENT NOT CONSIDERED FINAL
UNLESS ALL SIGNATURES COMPLETED



THE ESTIMATED QUANTITY OF DUCTILE IRON WATER PIPE FITTINGS ON THIS PLAN SHEET IS 1240 POUNDS. THE ACTUAL QUANTITY AND TYPE OF FITTINGS WILL VARY BASED ON FIELD CONDITIONS.

- 39 TORCHWOOD DEVELOPMENT COMPANY DB 5644 PG 1291 MB 55 PG 165
- 62 CHRISTOPHER MCCONNELL AND REBECCA MCCONNELL DB 5839 PG 2910
- 63 SHAWN BELSCHNER DB 5051 PG 1822 MB 48 PG 61
- 64 ROGER A WOOD DB 5432 PG 1118 MB 48 PG 61
- 65 NCDOT DB 5878 PG 165 MB 48 PG 61
- 66 ELIZABETH A WRIGHT DB 5284 PG 1338 MB 48 PG 61
- 39A SAVANA LAND COMPANY, LLC DB 4885 PG 1359 MB 59 PG 164-165
- 67 NCDOT DB 5878 PG 165 MB 48 PG 61
- 68 STEVEN A. KING DB 5841 PG 1962 MB 48 PG 61
- 69 RYAN D BIRTLES DB 5501 PG 595 MB 48 PG 61
- 70 DENNIS G STOKLEY DB 5064 PG 2518 MB 46 PG 248
- 71 SARA ROBIN TOOTHMAN DB 5802 PG 2059 MB 46 PG 248
- 72 TASHA L COLEY DB 5477 PG 2963 MB 46 PG 248
- 73 CINDY B. GASKINS DB 5696 PG 1672 MB 45 PG 206
- 74 MARY RADER HEINDENRICH, WIDOW DB 5718 PG 978 MB 45 PG 206
- 75 KIMBERLY D. MALDONADO DB 5811 PG 1422 MB 46 PG 248
- 925 NCDOT DB 5168 PG 1727 MB 48 PG 61



MATCHLINE - L - STA 96+00 (SHEET UC - 9)

PLANS PREPARED BY :
RK&K
RUMMEL, KLEPPER & KAHL, LLP
900 RIDGEFIELD DRIVE SUITE 350
RALEIGH, NORTH CAROLINA 27609-3960
NC LICENSE NO. F-0112 • (919) 878-9560