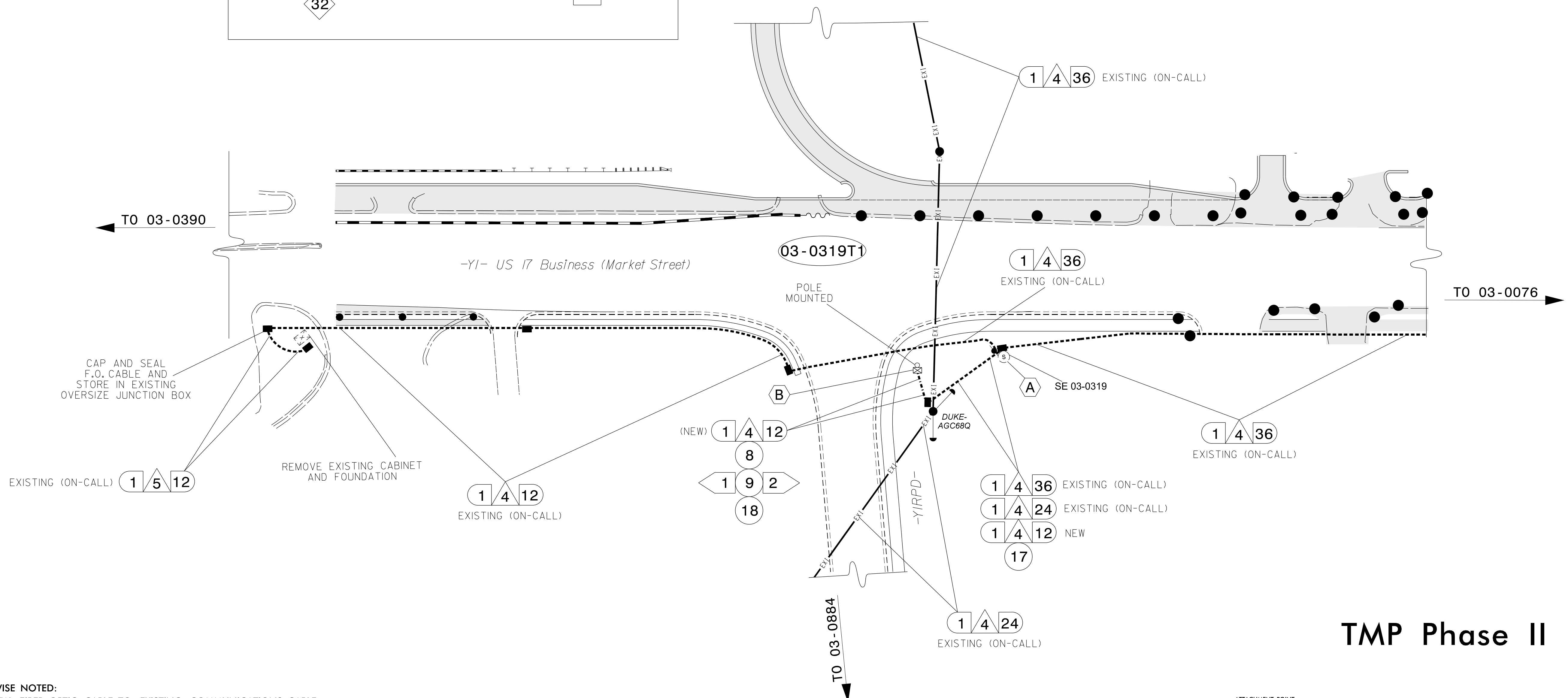


| | | | | | |
|--------------------|---|----|----------|---|----|
| A | | | B | | |
| 2 | 4 | 36 | 1 | 4 | 12 |
| EXISTING (ON-CALL) | | | (NEW) | | |
| 1 | 4 | 24 | 24 | | |
| EXISTING (ON-CALL) | | | | | |
| 1 | 4 | 12 | 28 | | |
| EXISTING (ON-CALL) | | | | | |
| 1 | 4 | 12 | 71 | | |
| (NEW) | | | | | |
| 32 | | | | | |



- NOTES:**
 1. UNLESS OTHERWISE NOTED:
 - OVERLASH NEW FIBER OPTIC CABLE TO EXISTING COMMUNICATIONS CABLE.
 - ATTACH NEW MESSENGER CABLE 40" BELOW POWER.
 - ATTACH ON FRONT SIDE (FS) OF POLE.
 2. SEAL ALL CONDUIT ENDS WITH DUCT AND CONDUIT SEALER AT ALL JUNCTION BOX / CABINET ENTRANCES.

| | | | | | | | | | | | | | |
|----|---|----|--|----|---|----|--|----|---|----|---|----|--|
| 1 | INSTALL COMPOSITE CCTV CABLE | 13 | INSTALL HEAT SHRINK TUBING RETROFIT KIT | 25 | INSTALL NEW RISER INTO POLE MOUNTED CABINET | 37 | INSTALL CCTV WOOD POLE | 49 | REMOVE EXISTING COMMUNICATIONS CABLE | 61 | REMOVE EXISTING CCTV CAMERA ASSEMBLY | 73 | INSTALL DIGITAL VIDEO DECODER IN COMMUNICATIONS RACK |
| 2 | INSTALL LOW VOLTAGE POWER CABLE (24VAC) | 14 | INSTALL HIGH DENSITY POLYETHYLENE CONDUIT | 26 | INSTALL DIGITAL VIDEO ENCODER | 38 | INSTALL STANDARD SIZE JUNCTION BOX | 50 | INSTALL WIRELESS DSL | 62 | NEW CABINET ENTRANCE INTO NEW FOUNDATION | 74 | INSTALL CARD CAGE IN COMMUNICATIONS RACK |
| 3 | INSTALL CATEGORY 5E CABLE | 15 | DIRECTIONAL DRILL CONDUIT | 27 | INSTALL NEW ETHERNET EDGE SWITCH IN CABINET | 39 | INSTALL SPECIAL-SIZED JUNCTION BOX | 51 | INSTALL CABLE STORAGE GUIDE(S) [SNOW SHOES(S)] AND STORE 100 FEET OF EACH CABLE | 63 | DRILL/CORE DRILL EXISTING FOUNDATION | 75 | RELOCATE RADIO |
| 4 | INSTALL SMFO CABLE | 16 | BORE AND JACK CONDUIT | 28 | INSTALL INTERCONNECT CENTER, PATCH PANEL, JUMPERS, AND FUSION SPlice CABLE IN CABINET | 40 | INSTALL OVER-SIZED JUNCTION BOX | 52 | INSTALL DELINEATOR MARKER | 64 | INTERCEPT AND REROUTE EXISTING CONDUITS | | |
| 5 | BACK-PULL EXIST SMFO CABLE | 17 | INSTALL CABLE(S) IN EXISTING CONDUIT | 29 | INSTALL UNDERGROUND SPlice ENCLOSURE | 41 | REMOVE EXISTING JUNCTION BOX | 53 | STORE 50 FEET OF COMMUNICATIONS CABLE (EACH CABLE) | 65 | BOND MESSENGER TO POLE GROUND | | |
| 6 | INSTALL FIBER-OPTIC DROP CABLE | 18 | INSTALL CABLE(S) IN NEW CONDUIT | 30 | INSTALL AERIAL SPlice ENCLOSURE | 42 | INSTALL WOOD POLE | 54 | LASH CABLE(S) TO EXISTING SIGNAL/COMMUNICATIONS CABLE | 66 | BOND RISER TO POLE GROUND | | |
| 7 | INSTALL TRACER WIRE | 19 | INSTALL CABLE(S) IN EXISTING RISER(S) | 31 | INSTALL SPlice CABINET | 43 | REMOVE EXISTING WOOD POLE | 55 | LASH CABLE(S) TO EXISTING MESSENGER CABLE | 67 | BOND TRACER WIRE TO EQUIPMENT GROUND BUS | | |
| 8 | TRENCH CONDUIT | 20 | INSTALL CABLE(S) IN NEW RISER(S) | 32 | MODIFY EXISTING SPlice ENCLOSURE OR INTERCONNECT CENTER | 44 | INSTALL AERIAL GUY ASSEMBLY | 56 | LASH CABLE(S) TO NEW MESSENGER CABLE | 68 | BOND TRACER WIRE TO POLE GROUND | | |
| 9 | INSTALL PVC CONDUIT | 21 | INSTALL CABLE(S) IN EXISTING CABINET ENTRANCE | 33 | REMOVE EXISTING SPlice / HUB / CABINET ENTRANCE | 45 | INSTALL STANDARD GUY ASSEMBLY | 57 | MODIFY EXISTING ELECTRICAL SERVICE FOR CCTV | 69 | INSTALL NEW ETHERNET CORE SWITCH IN COMMUNICATIONS RACK | | |
| 10 | INSTALL RIGID, GALVANIZED STEEL CONDUIT | 22 | INSTALL NEW CONDUIT INTO CABINET BASE (USE EX CABINET ENTRANCE WHEN AVAILABLE) | 34 | INSTALL CABINET FOUNDATION | 46 | INSTALL SIDEWALK GUY ASSEMBLY | 58 | INSTALL NEW ELECTRICAL SERVICE FOR CCTV | 70 | INSTALL CCTV METAL POLE & FOUNDATION | | |
| 11 | INSTALL RIGID, GALVANIZED STEEL RISER WITH WEATHERHEAD | 23 | INSTALL NEW RISER INTO CABINET BASE (USE EX CABINET ENTRANCE WHEN AVAILABLE) | 35 | REMOVE EXISTING CABINET FOUNDATION | 47 | INSTALL MESSENGER CABLE | 59 | INSTALL NEW POLE MOUNTED CCTV CABINET (336) | 71 | RELOCATE FO TRANSCEIVER | | |
| 12 | INSTALL RIGID, GALVANIZED STEEL RISER WITH HEAT SHRINK TUBING | 24 | INSTALL NEW CONDUIT INTO POLE MOUNTED CABINET | 36 | INSTALL CCTV CAMERA ASSEMBLY | 48 | REMOVE EXISTING COMMUNICATIONS CABLE AND MESSENGER CABLE | 60 | REMOVE EXISTING METAL CCTV POLE AND FOUNDATION | 72 | INSTALL FO TRANSCEIVER | | |

ATTACHMENT POINT:
 XXX / YYY DISTANCE ABOVE (IN) REFERENCE POINT
 YYY / XXX REFERENCE POINT DISTANCE BELOW (IN)

CONSTRUCTION NOTE SYMBOLOGY KEY

NUMBER OF CABLE(S)/LOOPS, DETECTOR AMPLIHERS, GUY(S)

NUMBER OF RISER(S)/CONDUIT(S)

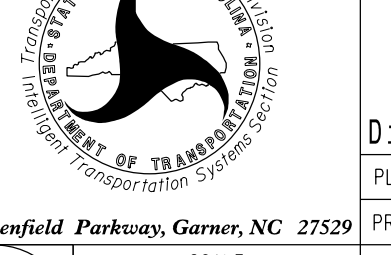
NUMBER OF FIBERSTWISTED PAIRS

DIAMETER OF RISER(S)/CONDUIT(S) (IN)

TMP Phase II



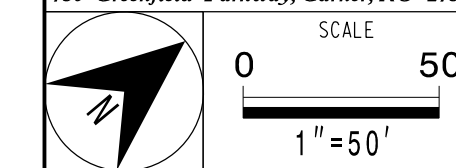
5600 SEVENTY-SEVEN CENTER DRIVE, SUITE 340
 CHARLOTTE, NORTH CAROLINA 28217
 704-522-7275 NGBEES #F-0326



SR 1409 (Military Cutoff Road)

Cable Routing Plans

| | | |
|-----------------------|-------------------------|------------|
| Division 3 | New Hanover County | Wilmington |
| PLAN DATE: May 2017 | REVIEWED BY: HA Badgett | |
| PREPARED BY: JA Wiles | REVIEWED BY: BJ Slocum | |



DOCUMENT NOT CONSIDERED FINAL UNLESS ALL SIGNATURES COMPLETED

| REVISIONS | INIT. | DATE |
|-----------|-------|------|
| | | |
| | | |
| | | |

CADD Filename: Temp_03-0319T2.dgn

25-MAY-2017 15:20
 0:\jwilson\101\0\proj\temp\03-0319T2.dgn - U-4751 Military Cutoff\03B-CR\temp\temp_03-0319T2.dgn
 BAO1500 - AT LUS35273