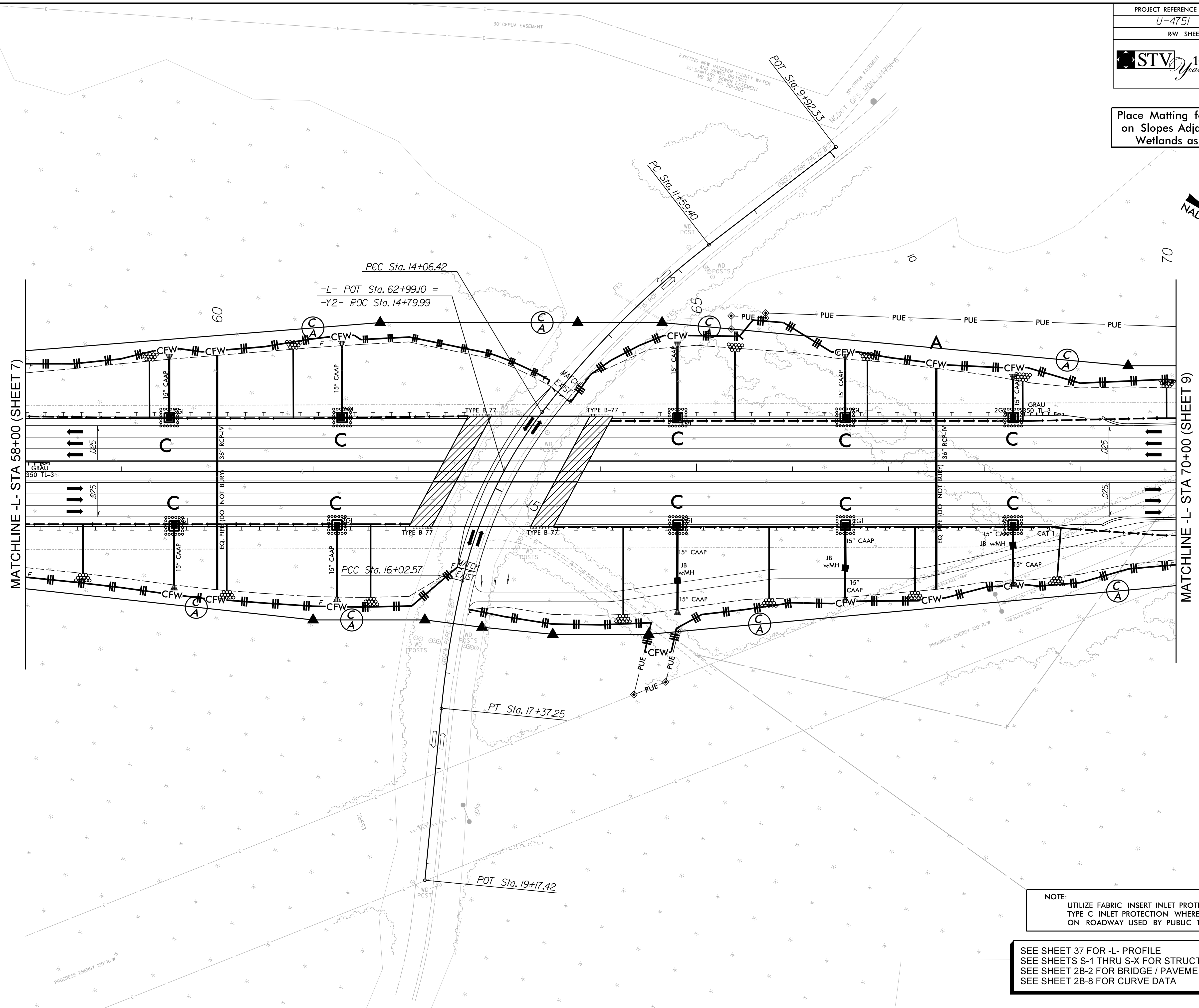
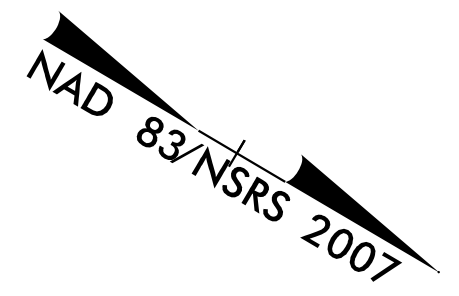


Place Matting for Erosion Control on Slopes Adjacent to Permitted Wetlands as Work Allows.



MATCHLINE -L- STA 58+00 (SHEET 7)

MATCHLINE -L- STA 70+00 (SHEET 9)

NOTE:
 UTILIZE FABRIC INSERT INLET PROTECTION IN LIEU OF TYPE C INLET PROTECTION WHERE WATER MIGHT POND ON ROADWAY USED BY PUBLIC TRAFFIC.

SEE SHEET 37 FOR -L- PROFILE
 SEE SHEETS S-1 THRU S-X FOR STRUCTURE PLANS
 SEE SHEET 2B-2 FOR BRIDGE / PAVEMENT RELATIONSHIP
 SEE SHEET 2B-8 FOR CURVE DATA