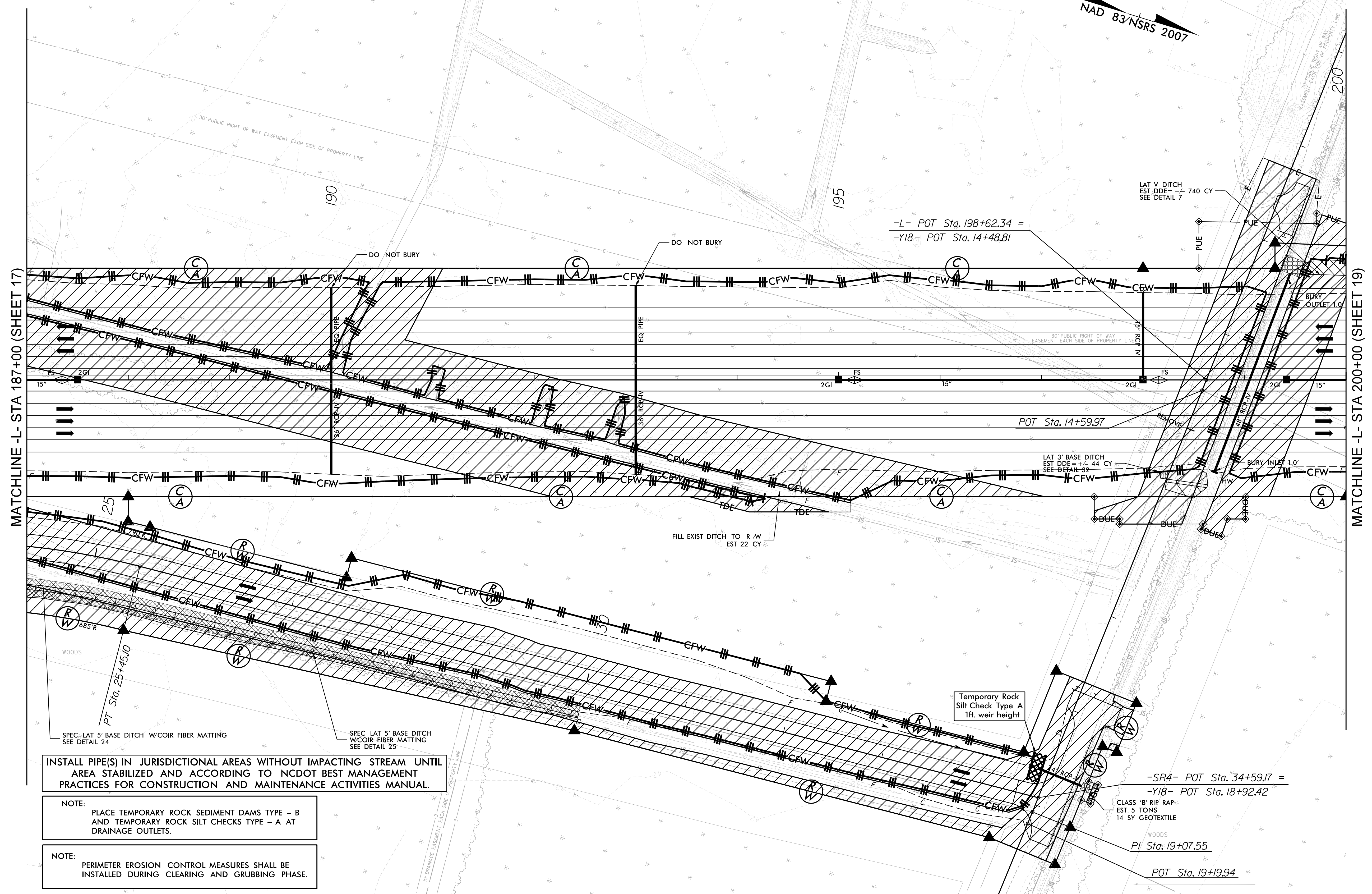


SEE SHEET 2A-10 FOR TURNAROUND DETAILS
 SEE SHEET 42 FOR -L- PROFILE
 SEE SHEET 62 FOR -Y18- PROFILE
 SEE SHEET 63 FOR -SR4- PROFILE
 SEE SHEETS 2B-8 & 2B-9 FOR CURVE DATA
 SEE SHEETS 2D-1 & 2D-2 FOR DITCH DETAILS

 ENVIRONMENTALLY SENSITIVE AREA
 SEE PROJECT SPECIAL PROVISIONS

CLEARING AND GRUBBING
 EROSION CONTROL FOR
 CONSTRUCTION SHEET 18

NAD 83/NSRS 2007



MATCHLINE -L- STA 187+00 (SHEET 17)

MATCHLINE -L- STA 200+00 (SHEET 19)

INSTALL PIPE(S) IN JURISDICTIONAL AREAS WITHOUT IMPACTING STREAM UNTIL AREA STABILIZED AND ACCORDING TO NCDOT BEST MANAGEMENT PRACTICES FOR CONSTRUCTION AND MAINTENANCE ACTIVITIES MANUAL.

NOTE:
 PLACE TEMPORARY ROCK SEDIMENT DAMS TYPE - B AND TEMPORARY ROCK SILT CHECKS TYPE - A AT DRAINAGE OUTLETS.

NOTE:
 PERIMETER EROSION CONTROL MEASURES SHALL BE INSTALLED DURING CLEARING AND GRUBBING PHASE.

SPEC. LAT 5' BASE DITCH W/COIR FIBER MATTING SEE DETAIL 24

SPEC. LAT 5' BASE DITCH W/COIR FIBER MATTING SEE DETAIL 25

Temporary Rock Silt Check Type A
 1ft. weir height

-SR4- POT Sta. 34+59.7 =
 -Y18- POT Sta. 18+92.42
 CLASS 'B' RIP RAP
 EST. 5 TONS
 14 SY GEOTEXTILE

Pi Sta. 19+07.55

POT Sta. 19+19.94

6/2/2017
 R:\Environmental\Design\U4751\EC_psh18.dgn
 P:\Projects\U4751\EC_psh18.dwg