

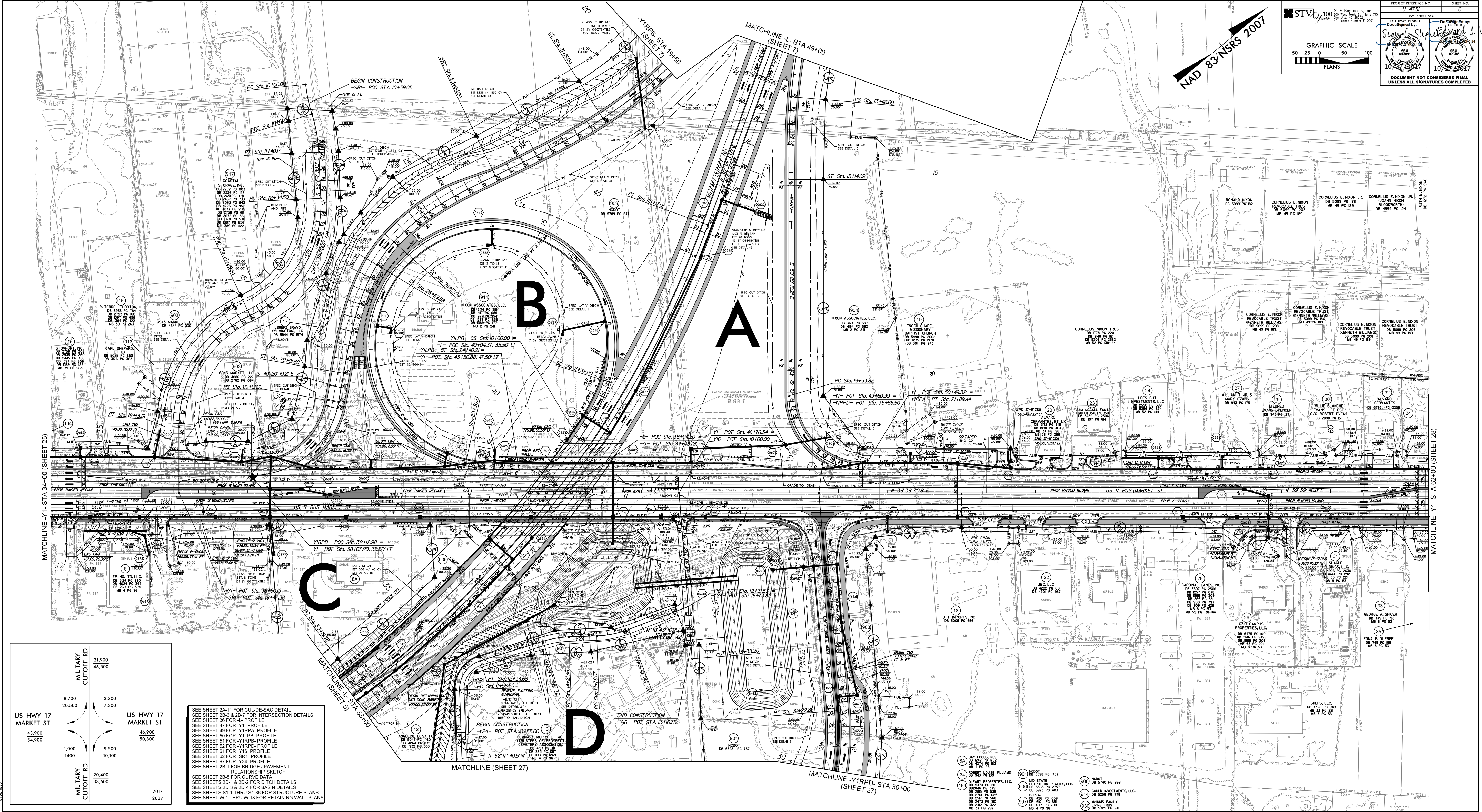
STV 100 Engineers, Inc.  
 100 West State St., Suite 715  
 Columbia, MO 65201  
 License Number: F-0391

PROJECT REFERENCE NO.: U-4751  
 SHEET NO.: 6

DATE: 10/27/2017  
 DRAWN BY: [Signature]  
 CHECKED BY: [Signature]  
 DESIGNED BY: [Signature]  
 DOCUMENT NOT CONSIDERED FINAL UNLESS ALL SIGNATURES COMPLETED

GRAPHIC SCALE  
 50 25 0 50 100  
 PLANS

NAD 83/NSRS 2007



MILITARY CUTOFF RD		21,900	46,500
US HWY 17 MARKET ST	8,700	3,300	7,300
	43,900	46,900	50,300
	54,900	1,000	10,100
MILITARY CUTOFF RD	20,400	33,600	
		2017	2037

SEE SHEET 2A-11 FOR CUL-DE-SAC DETAIL  
 SEE SHEET 28-12-28-7 FOR INTERSECTION DETAILS  
 SEE SHEET 36 FOR L-PROFILE  
 SEE SHEET 47 FOR Y1-PROFILE  
 SEE SHEET 49 FOR Y1RPA-PROFILE  
 SEE SHEET 50 FOR Y1LPB-PROFILE  
 SEE SHEET 51 FOR Y1RPA-PROFILE  
 SEE SHEET 52 FOR Y1RPD-PROFILE  
 SEE SHEET 61 FOR Y16-PROFILE  
 SEE SHEET 62 FOR SR1-PROFILE  
 SEE SHEET 67 FOR Y24-PROFILE  
 SEE SHEET 28-A FOR BRIDGE/PAVEMENT RELATIONSHIP SKETCH  
 SEE SHEET 28-B FOR CURVE DATA  
 SEE SHEETS 20-A & 20-F FOR DITCH DETAILS  
 SEE SHEETS 2D-3 & 2D-4 FOR BASIN DETAILS  
 SEE SHEETS S1-1 THRU S1-38 FOR STRUCTURE PLANS  
 SEE SHEET W-1 THRU W-13 FOR RETAINING WALL PLANS

- 84 BAY FOODS, INC. DB 5000 PG 182
- 85 BAY FOODS, INC. DB 5000 PG 183
- 86 BAY FOODS, INC. DB 5000 PG 184
- 87 BAY FOODS, INC. DB 5000 PG 185
- 88 BAY FOODS, INC. DB 5000 PG 186
- 89 BAY FOODS, INC. DB 5000 PG 187
- 90 BAY FOODS, INC. DB 5000 PG 188
- 91 BAY FOODS, INC. DB 5000 PG 189
- 92 BAY FOODS, INC. DB 5000 PG 190
- 93 BAY FOODS, INC. DB 5000 PG 191
- 94 BAY FOODS, INC. DB 5000 PG 192
- 95 BAY FOODS, INC. DB 5000 PG 193
- 96 BAY FOODS, INC. DB 5000 PG 194
- 97 BAY FOODS, INC. DB 5000 PG 195
- 98 BAY FOODS, INC. DB 5000 PG 196
- 99 BAY FOODS, INC. DB 5000 PG 197
- 100 BAY FOODS, INC. DB 5000 PG 198