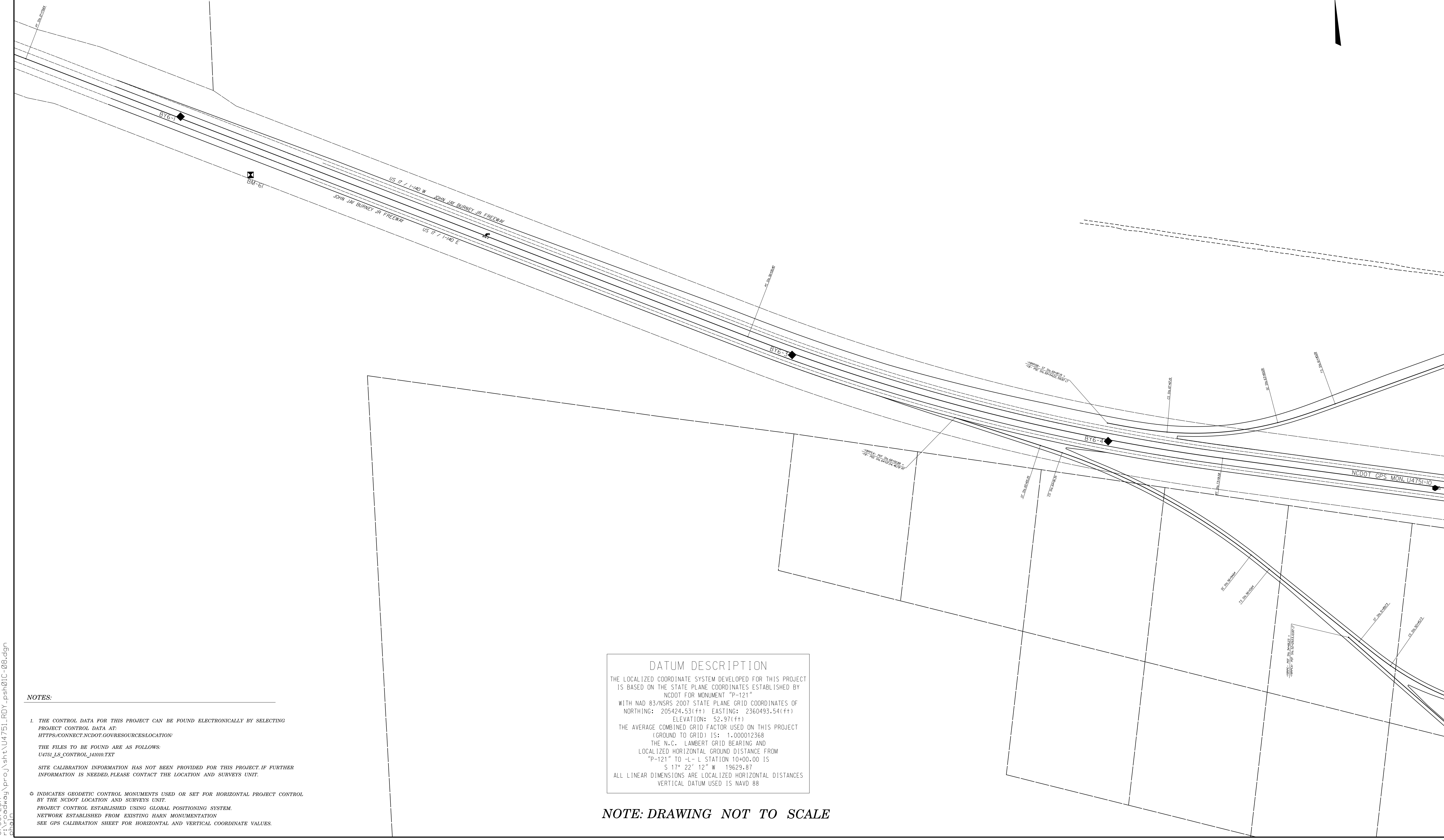
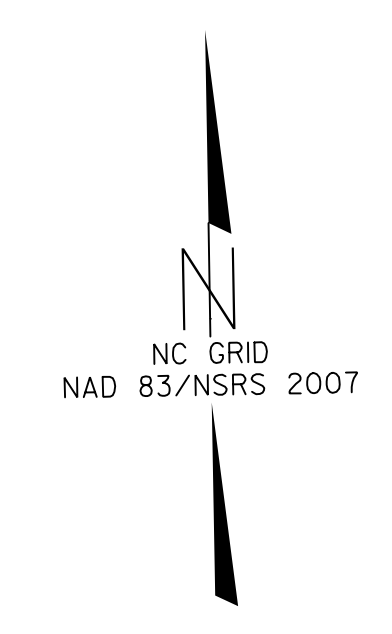


| | |
|-----------------------|-----------|
| PROJECT REFERENCE NO. | SHEET NO. |
| U-4751 | 1C-8 |
| Location and Surveys | |

SURVEY CONTROL SHEET U-4751



NOTES:

1. THE CONTROL DATA FOR THIS PROJECT CAN BE FOUND ELECTRONICALLY BY SELECTING PROJECT CONTROL DATA AT:
[HTTPS://CONNECT.NCDOT.GOV/RESOURCES/LOCATION/](https://connect.ncdot.gov/resources/location/)
 THE FILES TO BE FOUND ARE AS FOLLOWS:
 U4751_LS_CONTROL_141010.TXT

SITE CALIBRATION INFORMATION HAS NOT BEEN PROVIDED FOR THIS PROJECT. IF FURTHER INFORMATION IS NEEDED, PLEASE CONTACT THE LOCATION AND SURVEYS UNIT.

○ INDICATES GEODETIC CONTROL MONUMENTS USED OR SET FOR HORIZONTAL PROJECT CONTROL BY THE NCDOT LOCATION AND SURVEYS UNIT.
 PROJECT CONTROL ESTABLISHED USING GLOBAL POSITIONING SYSTEM.
 NETWORK ESTABLISHED FROM EXISTING HARN MONUMENTATION
 SEE GPS CALIBRATION SHEET FOR HORIZONTAL AND VERTICAL COORDINATE VALUES.

DATUM DESCRIPTION

THE LOCALIZED COORDINATE SYSTEM DEVELOPED FOR THIS PROJECT IS BASED ON THE STATE PLANE COORDINATES ESTABLISHED BY NCDOT FOR MONUMENT "P-121" WITH NAD 83/NSRS 2007 STATE PLANE GRID COORDINATES OF NORTHING: 205424.53(ft); EASTING: 2360493.54(ft); ELEVATION: 52.97(ft)

THE AVERAGE COMBINED GRID FACTOR USED ON THIS PROJECT (GROUND TO GRID) IS: 1.000012368

THE N.C. LAMBERT GRID BEARING AND LOCALIZED HORIZONTAL GROUND DISTANCE FROM "P-121" TO -L- L STATION 10+00.00 IS
 S 17° 22' 12" W 19629.87

ALL LINEAR DIMENSIONS ARE LOCALIZED HORIZONTAL DISTANCES
 VERTICAL DATUM USED IS NAVD 88

NOTE: DRAWING NOT TO SCALE

6/2/99

6/30/2017
6:\30\2017\adadaf\proj\shd\U4751_RDY_psh01C-08.dgn