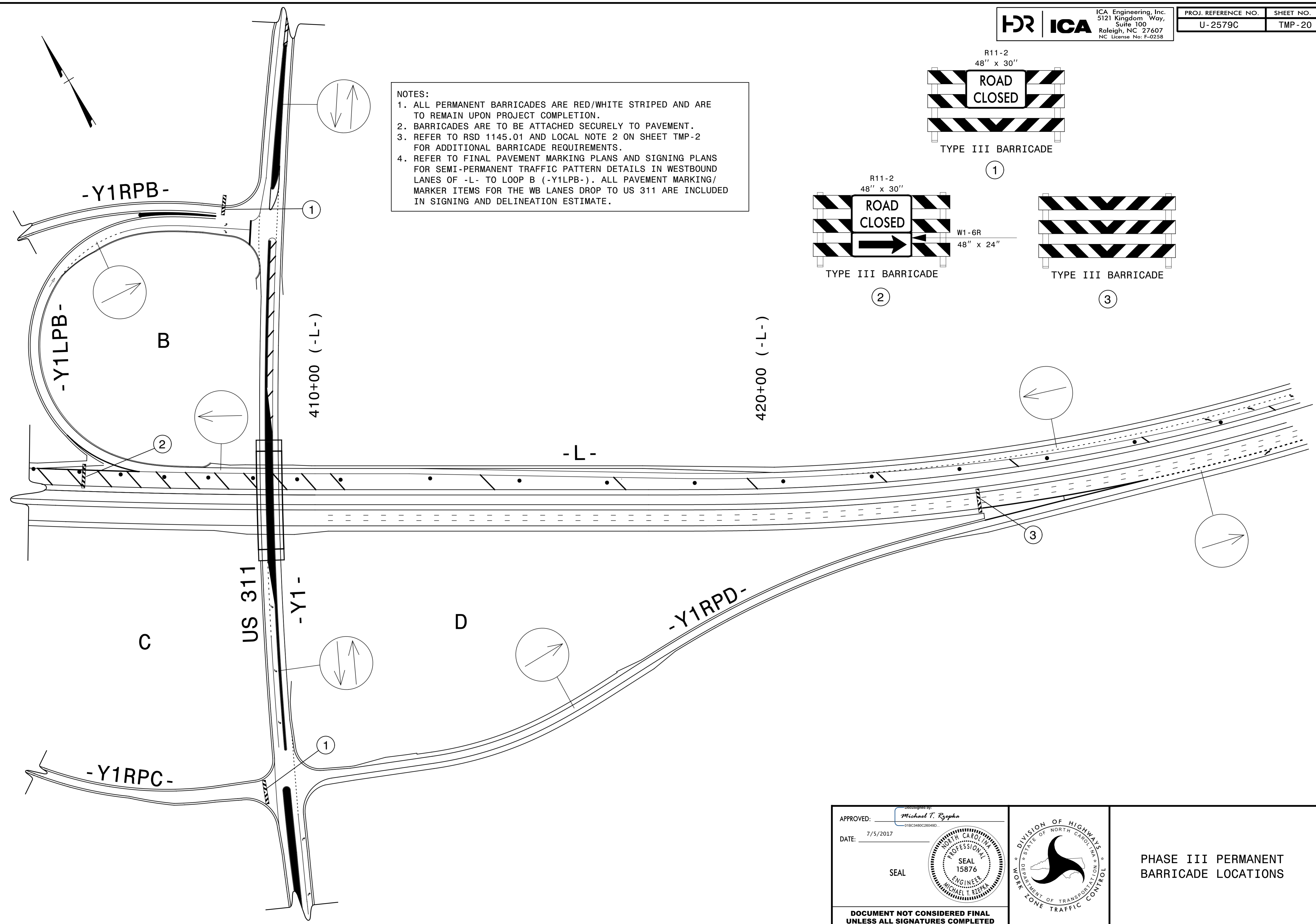
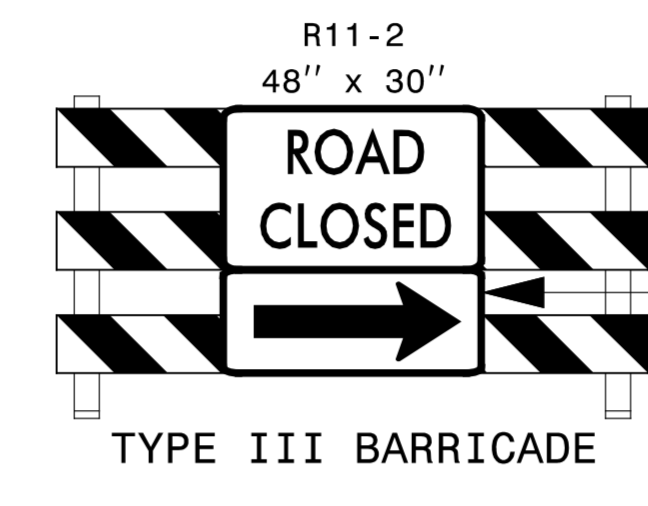
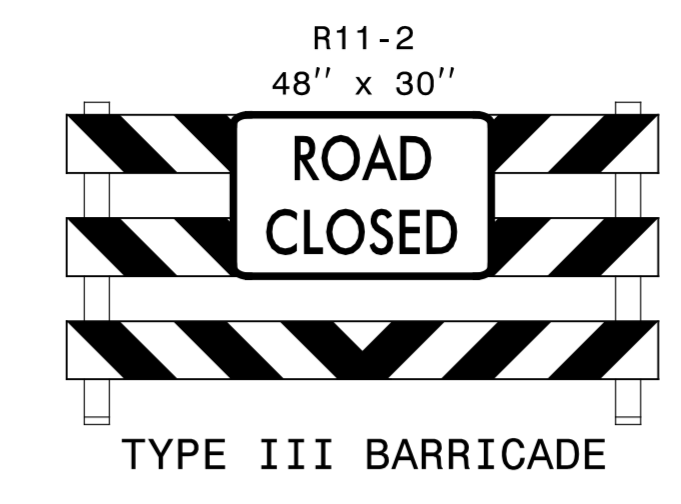


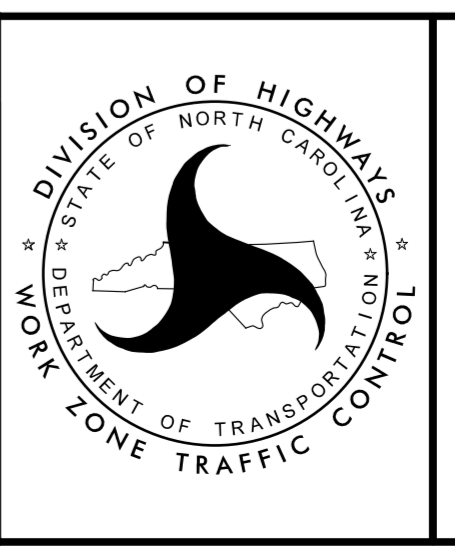
NOTES:

1. ALL PERMANENT BARRICADES ARE RED/WHITE STRIPED AND ARE TO REMAIN UPON PROJECT COMPLETION.
2. BARRICADES ARE TO BE ATTACHED SECURELY TO PAVEMENT.
3. REFER TO RSD 1145.01 AND LOCAL NOTE 2 ON SHEET TMP-2 FOR ADDITIONAL BARRICADE REQUIREMENTS.
4. REFER TO FINAL PAVEMENT MARKING PLANS AND SIGNING PLANS FOR SEMI-PERMANENT TRAFFIC PATTERN DETAILS IN WESTBOUND LANES OF -L- TO LOOP B (-Y1LPB-). ALL PAVEMENT MARKING/MARKER ITEMS FOR THE WB LANES DROP TO US 311 ARE INCLUDED IN SIGNING AND DELINEATION ESTIMATE.



APPROVED: *Michael T. Rzepka*
DATE: 7/5/2017
SEAL

DOCUMENT NOT CONSIDERED FINAL
UNLESS ALL SIGNATURES COMPLETED



PHASE III PERMANENT
BARRICADE LOCATIONS

7/5/2017
R:\TCP\U2579c-fmp_p3-final_barr.dgn
ICA Engineering