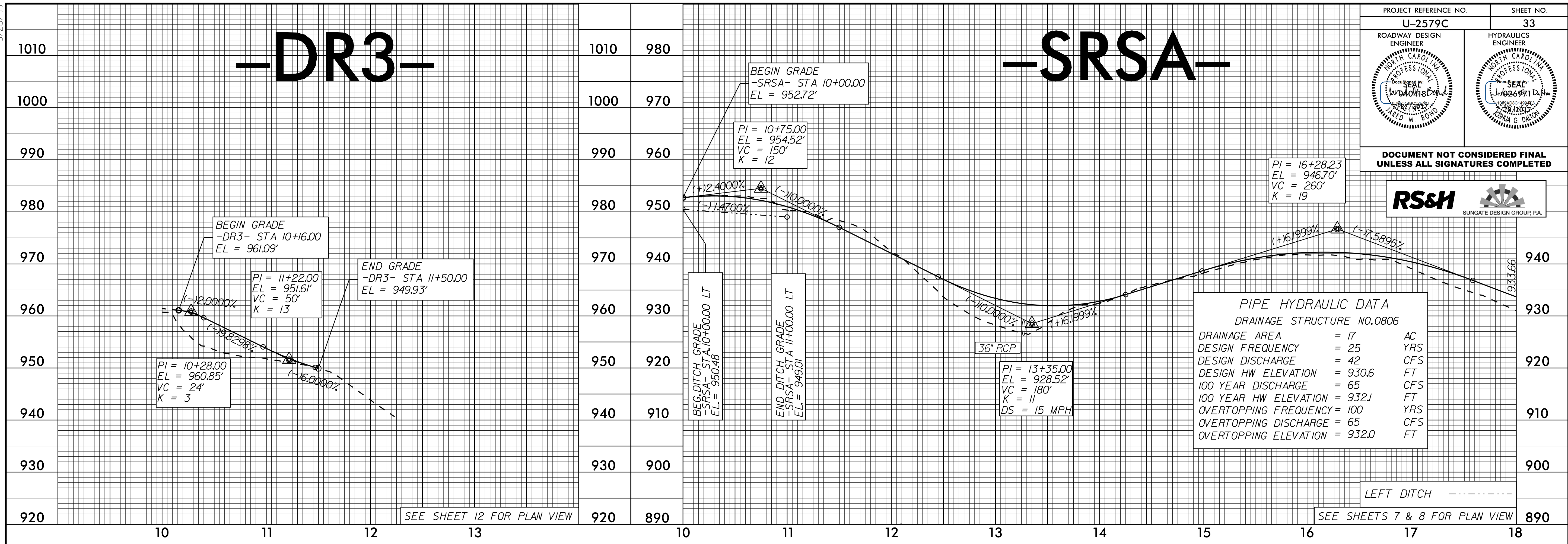


PROJECT REFERENCE NO. U-2579C	SHEET NO. 33
ROADWAY DESIGN ENGINEER <i>[Signature]</i> PROFESSIONAL SEAL JAMES M. BOYD	HYDRAULICS ENGINEER <i>[Signature]</i> PROFESSIONAL SEAL CHRISTINA G. DALTON

DOCUMENT NOT CONSIDERED FINAL UNLESS ALL SIGNATURES COMPLETED



BEGIN GRADE
-DR3- STA 10+16.00
EL = 961.09'

PI = 11+22.00
EL = 951.61'
VC = 50'
K = 13

END GRADE
-DR3- STA 11+50.00
EL = 949.93'

PI = 10+28.00
EL = 960.85'
VC = 24'
K = 3

BEGIN GRADE
-SRSA- STA 10+00.00
EL = 952.72'

PI = 10+75.00
EL = 954.52'
VC = 150'
K = 12

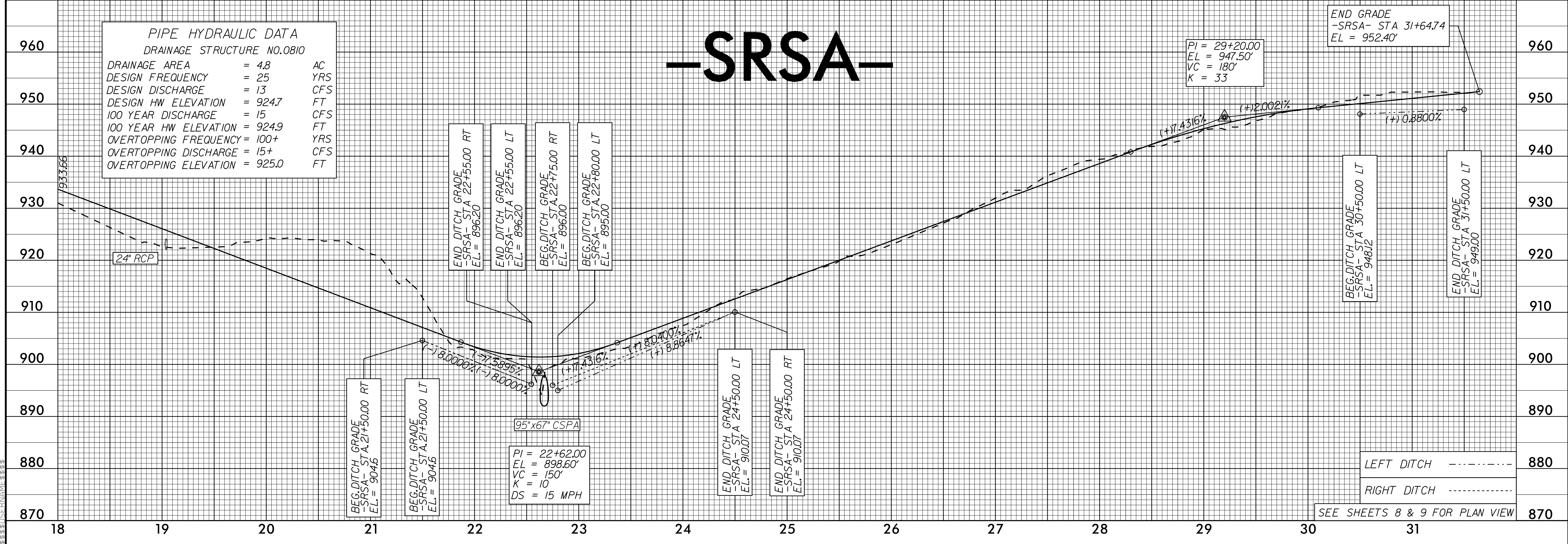
PI = 16+28.23
EL = 946.70'
VC = 260'
K = 19

PIPE HYDRAULIC DATA
DRAINAGE STRUCTURE NO.0806

DRAINAGE AREA	= 17	AC
DESIGN FREQUENCY	= 25	YRS
DESIGN DISCHARGE	= 42	CFS
DESIGN HW ELEVATION	= 930.6	FT
100 YEAR DISCHARGE	= 65	CFS
100 YEAR HW ELEVATION	= 932.1	FT
OVERTOPPING FREQUENCY	= 100	YRS
OVERTOPPING DISCHARGE	= 65	CFS
OVERTOPPING ELEVATION	= 932.0	FT

PIPE HYDRAULIC DATA
DRAINAGE STRUCTURE NO.0810

DRAINAGE AREA	= 4.8	AC
DESIGN FREQUENCY	= 25	YRS
DESIGN DISCHARGE	= 13	CFS
DESIGN HW ELEVATION	= 924.7	FT
100 YEAR DISCHARGE	= 15	CFS
100 YEAR HW ELEVATION	= 924.9	FT
OVERTOPPING FREQUENCY	= 100+	YRS
OVERTOPPING DISCHARGE	= 15+	CFS
OVERTOPPING ELEVATION	= 925.0	FT



-SRSA-

END GRADE
-SRSA- STA 31+64.74
EL = 952.40'

PI = 29+20.00
EL = 947.50'
VC = 180'
K = 33

END DITCH GRADE
-SRSA- STA 22+55.00 RT
EL = 896.20

END DITCH GRADE
-SRSA- STA 22+55.00 LT
EL = 896.20

BEG. DITCH GRADE
-SRSA- STA 22+75.00 RT
EL = 896.00

BEG. DITCH GRADE
-SRSA- STA 22+80.00 LT
EL = 895.00

BEG. DITCH GRADE
-SRSA- STA 30+50.00 LT
EL = 948.12

END DITCH GRADE
-SRSA- STA 31+50.00 LT
EL = 949.00

PI = 22+62.00
EL = 898.60'
VC = 150'
K = 10
DS = 15 MPH

BEG. DITCH GRADE
-SRSA- STA 21+50.00 RT
EL = 904.6

BEG. DITCH GRADE
-SRSA- STA 21+50.00 LT
EL = 904.6

END DITCH GRADE
-SRSA- STA 24+50.00 LT
EL = 910.07

END DITCH GRADE
-SRSA- STA 24+50.00 RT
EL = 910.07

LEFT DITCH -----

RIGHT DITCH -----

SEE SHEETS 8 & 9 FOR PLAN VIEW