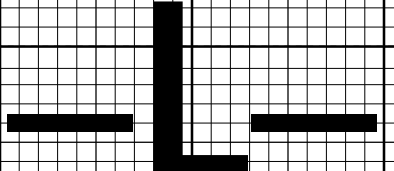


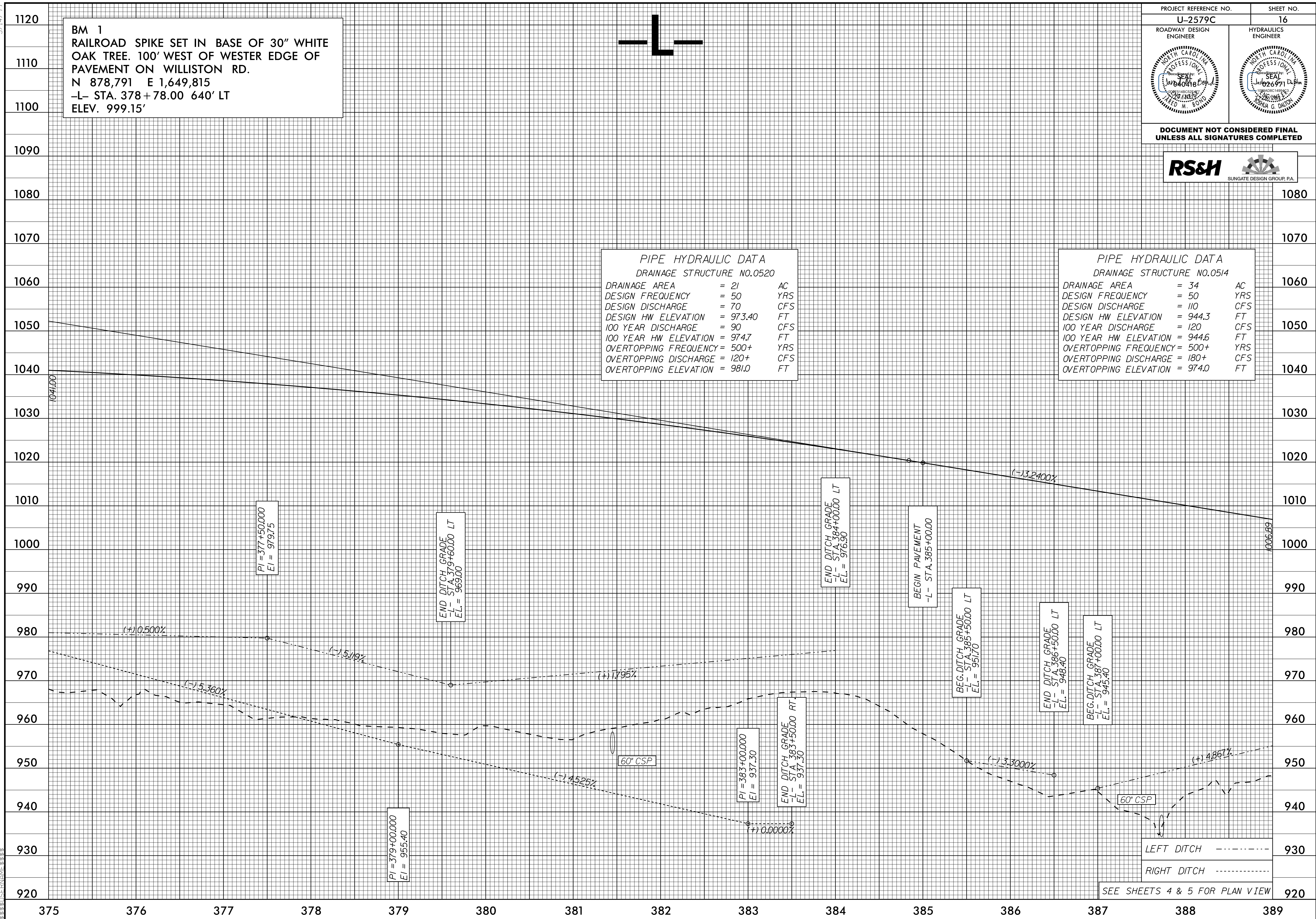
5/14/99

BM 1
RAILROAD SPIKE SET IN BASE OF 30" WHITE
OAK TREE. 100' WEST OF WESTER EDGE OF
PAVEMENT ON WILLISTON RD.
N 878,791 E 1,649,815
-L- STA. 378+78.00 640' LT
ELEV. 999.15'



PROJECT REFERENCE NO. U-2579C	SHEET NO. 16
ROADWAY DESIGN ENGINEER	HYDRAULICS ENGINEER

DOCUMENT NOT CONSIDERED FINAL
UNLESS ALL SIGNATURES COMPLETED



PIPE HYDRAULIC DATA
DRAINAGE STRUCTURE NO.0520

DRAINAGE AREA	= 21	AC
DESIGN FREQUENCY	= 50	YRS
DESIGN DISCHARGE	= 70	CFS
DESIGN HW ELEVATION	= 973.40	FT
100 YEAR DISCHARGE	= 90	CFS
100 YEAR HW ELEVATION	= 974.7	FT
OVERTOPPING FREQUENCY	= 500+	YRS
OVERTOPPING DISCHARGE	= 120+	CFS
OVERTOPPING ELEVATION	= 981.0	FT

PIPE HYDRAULIC DATA
DRAINAGE STRUCTURE NO.0514

DRAINAGE AREA	= 34	AC
DESIGN FREQUENCY	= 50	YRS
DESIGN DISCHARGE	= 110	CFS
DESIGN HW ELEVATION	= 944.3	FT
100 YEAR DISCHARGE	= 120	CFS
100 YEAR HW ELEVATION	= 944.6	FT
OVERTOPPING FREQUENCY	= 500+	YRS
OVERTOPPING DISCHARGE	= 180+	CFS
OVERTOPPING ELEVATION	= 974.0	FT

PI = 377+50.000
EI = 979.75

END DITCH GRADE
-L- STA. 379+60.00 LT
EL. = 969.00

END DITCH GRADE
-L- STA. 384+00.00 LT
EL. = 976.90

BEGIN PAVEMENT
-L- STA. 385+00.00

BEG. DITCH GRADE
-L- STA. 385+50.00 LT
EL. = 951.70

END DITCH GRADE
-L- STA. 386+50.00 LT
EL. = 948.40

BEG. DITCH GRADE
-L- STA. 387+00.00 LT
EL. = 945.40

PI = 379+00.000
EI = 955.40

PI = 383+00.000
EI = 937.30

END DITCH GRADE
-L- STA. 383+50.00 RT
EL. = 937.30

60' CSP

LEFT DITCH

RIGHT DITCH

SEE SHEETS 4 & 5 FOR PLAN VIEW

03 JUL 2017 15:35 U-2579C-pl-16.dgn