

**This electronic collection of documents is provided
for the convenience of the user
and is Not a Certified Document –**

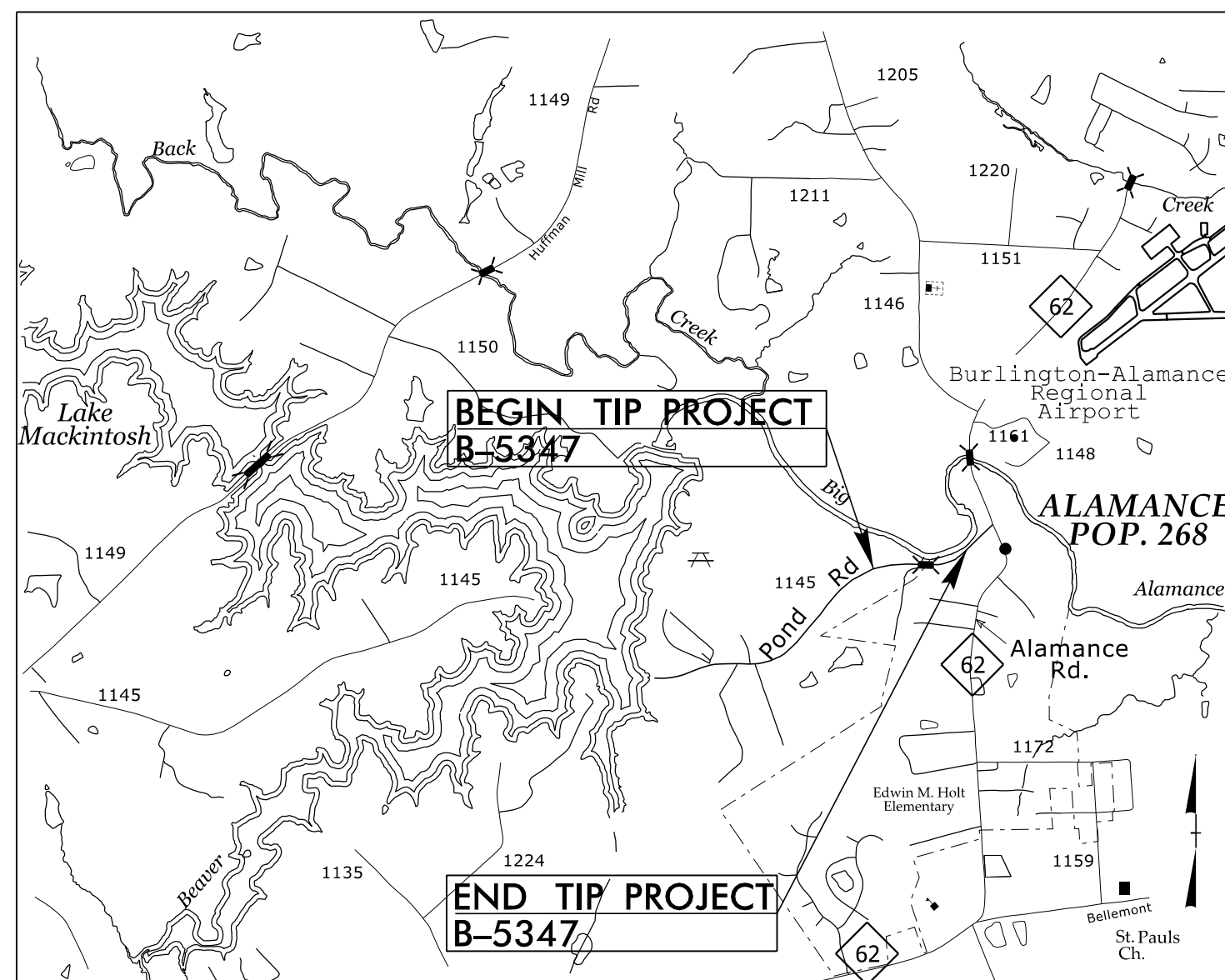
**The documents contained herein were originally issued
and sealed by the individuals whose names and license
numbers appear on each page, on the dates appearing
with their signature on that page.**

**This file or an individual page
shall not be considered a certified document.**

09/08/99

TIP PROJECT: B-5347

See Sheet 1-A For Index of Sheets



VICINITY MAP

STATE OF NORTH CAROLINA
DIVISION OF HIGHWAYS

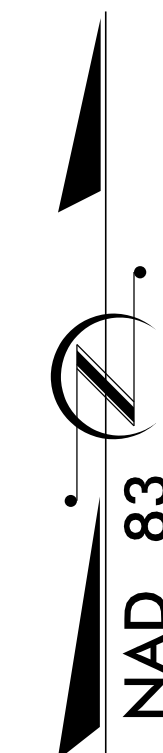
UTILITIES BY OTHERS PLANS
ALAMANCE COUNTY

LOCATION: BRIDGE NO. 170 OVER A PRONG OF
ALAMANCE CREEK ON SR 1145 (POND RD.)

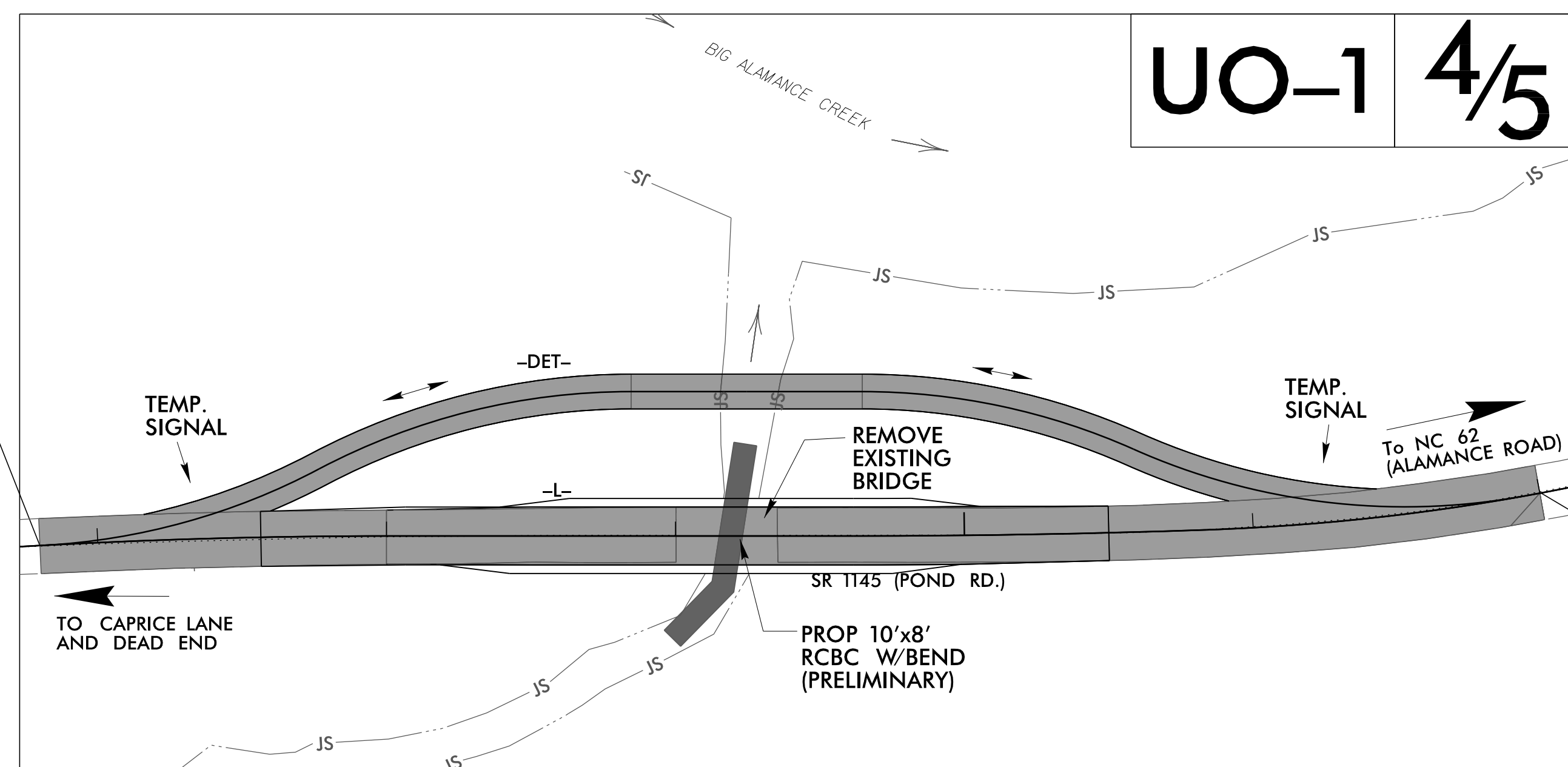
TYPE OF WORK: POWER, TELEPHONE, AND CATV RELOCATION

T.I.P. NO.	SHEET NO.
B-5347	UO-1

NOTE:
ALL UTILITY WORK SHOWN ON THIS SHEET IS DONE BY OTHERS.
NO PAYMENT WILL BE MADE TO THE CONTRACTOR FOR UTILITY WORK SHOWN ON THIS SHEET.



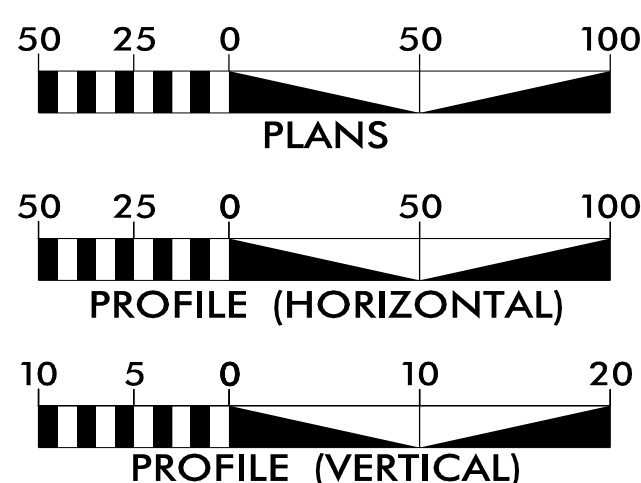
BEGIN TIP PROJECT B-5347
-L- STA. 11 + 80.00



END TIP PROJECT B-5347
-L- STA. 17 + 00.00

THIS PROJECT IS NOT WITHIN ANY MUNICIPAL BOUNDARIES.
CLEARING ON THIS PROJECT SHALL BE PERFORMED TO THE LIMITS ESTABLISHED BY METHOD II.

GRAPHIC SCALES



INDEX OF SHEETS

SHEET NO.:	DESCRIPTION:
UO-1	TITLE SHEET
UO-2	UBO PLAN SHEETS

UTILITY OWNERS WITH CONFLICTS

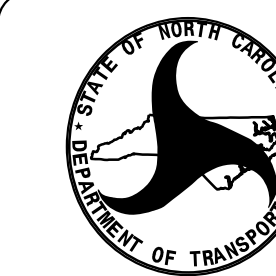
- (A) POWER - DUKE ENERGY
- (B) TELEPHONE - AT&T
- (C) CATV - CHARTER

PREPARED IN THE OFFICE OF:

1223 Jones Franklin Rd.
Raleigh, N.C. 27606
License No. F-0377
Bus: 919 851 8077
Fax: 919 851 8107

TRANSPORTATION PLANNING/DESIGN - BRIDGE/STRUCTURE DESIGN
CIVIL/SITE DESIGN - GIS/GPS - CONSTRUCTION OBSERVATION

John D. Schriener, PLS PROJECT UTILITY COORDINATOR



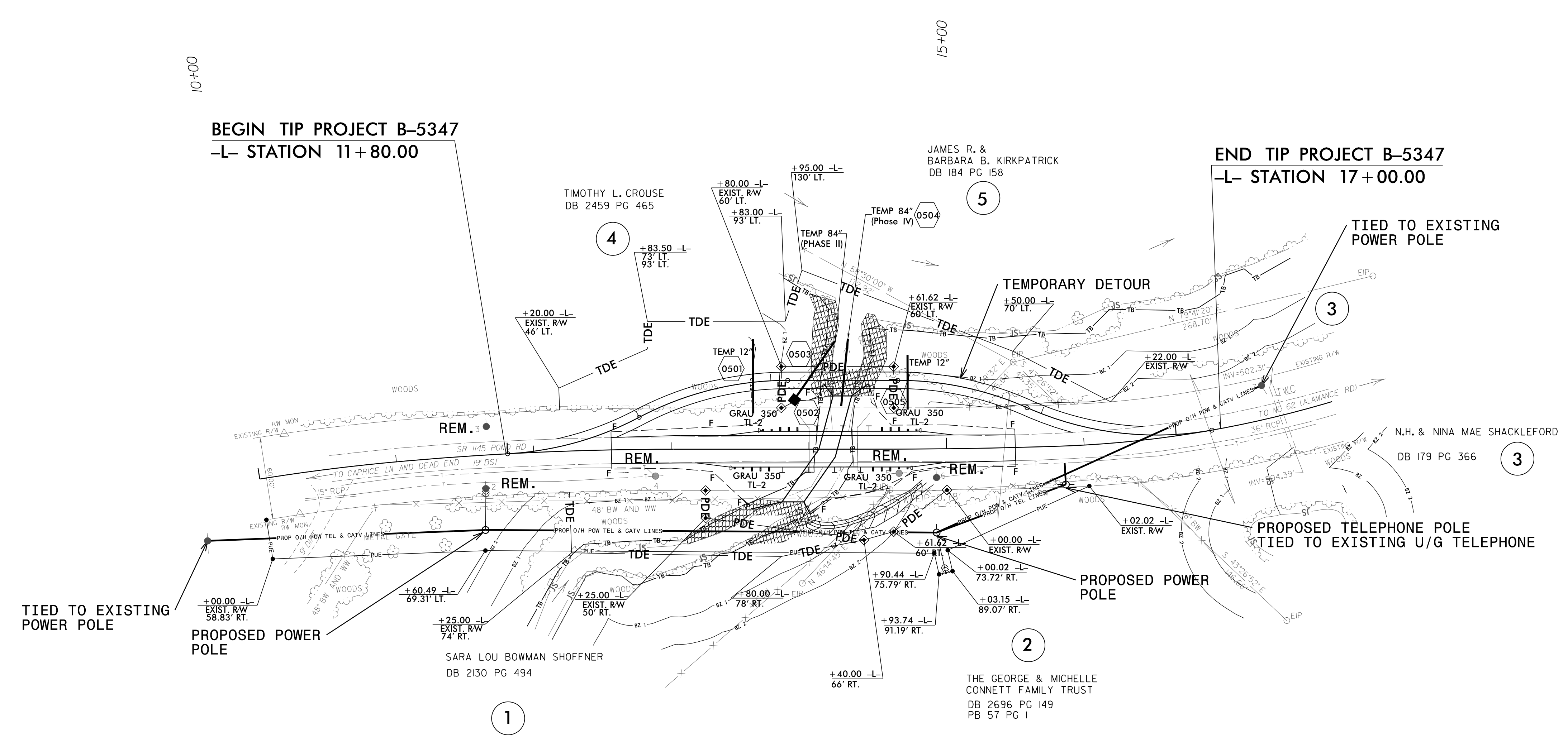
DIVISION OF HIGHWAYS
UTILITIES UNIT
1555 MAIL SERVICES CENTER
RALEIGH, NC 27699-1555
PHONE (919) 707-6690
FAX (919) 250-4151

Donna Jackson, PE	UTILITIES REGIONAL ENGINEER
Don Proper, PE	UTILITIES ENGINEER
Ed Reams	UTILITIES AREA COORDINATOR
Tanga Sampson	UTILITIES COORDINATOR

\$\$\$\$\$ SYSTEMS \$\$\$
\$\$\$\$\$ DGN \$\$\$
\$\$\$\$\$ USER NAME \$\$\$

UTILITIES BY OTHERS

NOTE:
 ALL PROPOSED UTILITY WORK SHOWN ON THIS SHEET WILL BE DONE BY OTHERS. NO PAYMENT WILL BE MADE TO THE CONTRACTOR FOR PROPOSED UTILITY WORK SHOWN ON THIS SHEET.



NOTES:
 1) POLE HEIGHT WILL BE SET TO PROVIDE +/-38' 8" VERTICAL CLEARANCE TO THE CONDUCTOR AND +/- 21' TO OTHER UTILITY ATTACHMENTS.

REVISIONS

5/14/99
 9:45:03 AM
 I:\t\es\Eng\9700\B0\Proj\B-5347_ut_rdy\4_L02_psh.dgn