

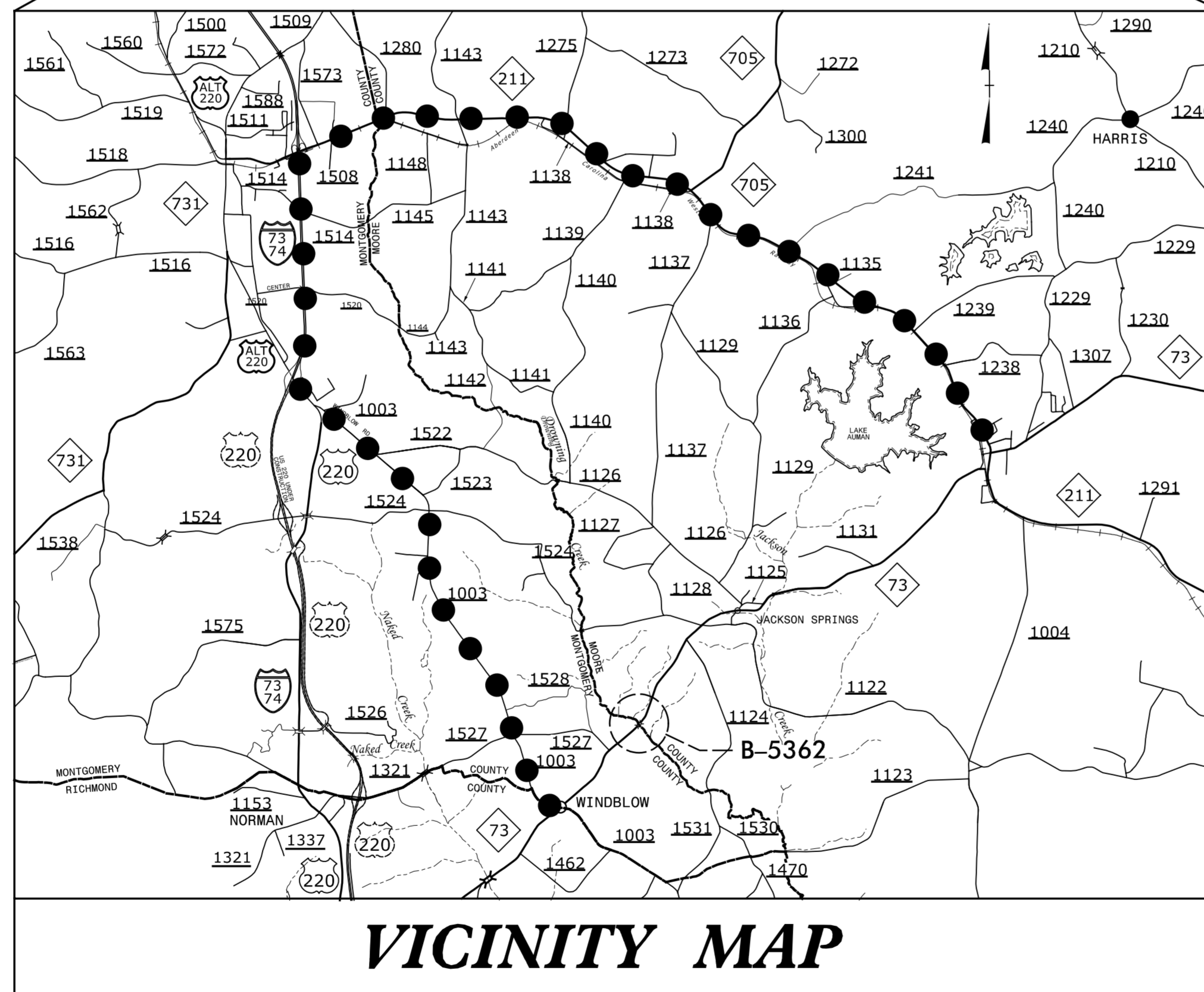
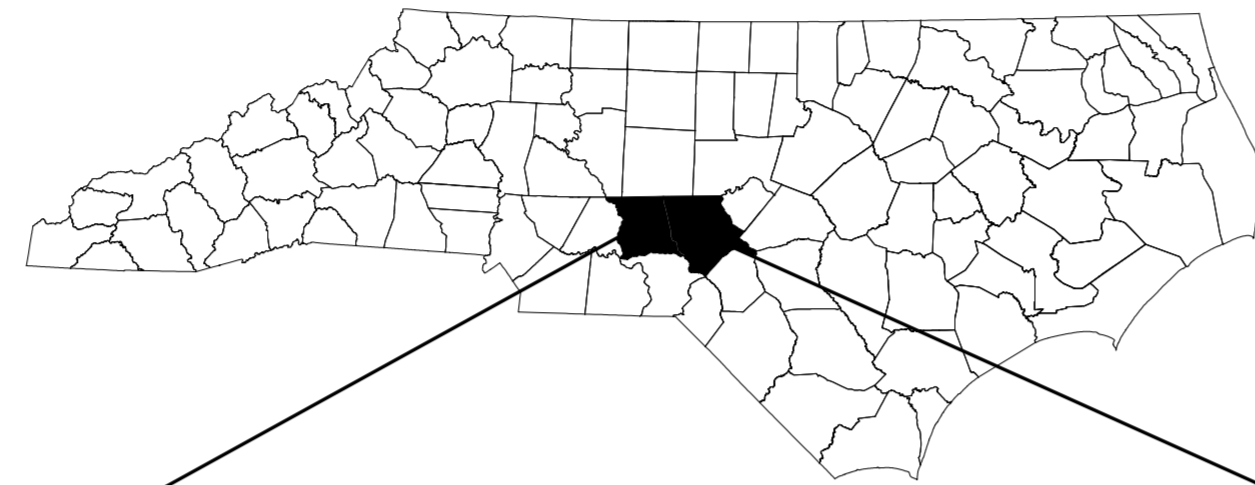
**This electronic collection of documents is provided
for the convenience of the user
and is Not a Certified Document –**

**The documents contained herein were originally issued
and sealed by the individuals whose names and license
numbers appear on each page, on the dates appearing
with their signature on that page.**

**This file or an individual page
shall not be considered a certified document.**

STATE OF NORTH CAROLINA
DIVISION OF HIGHWAYS

TRANSPORTATION MANAGEMENT PLAN
MONTGOMERY / MOORE COUNTIES



LOCATION: BRIDGE NO. 53 OVER DROWNING CREEK ON NC 73
TYPE OF WORK: GRADING, PAVING, DRAINAGE AND STRUCTURE

SHEET NO.	TITLE
TMP-1	TITLE SHEET, VICINITY MAP, AND INDEX OF SHEETS
TMP-1A	ROADWAY STANDARD DRAWINGS AND LEGEND
TMP-1B	TRANSPORTATION OPERATIONS PLAN AND PHASING
TMP-2	DETAIL FOR NC 73 ROAD CLOSURE
TMP-3	INSET DETAILS FOR NC 73 ROAD CLOSURE
TMP-4	ROAD CLOSURE SIGNS AND DETOUR SIGNS
TMP-5	SPECIAL SIGN DESIGN

SHEET NO.
TMP-1

B-5362

TIP PROJECT:

DOCUMENT NOT CONSIDERED FINAL
UNLESS ALL SIGNATURES COMPLETED

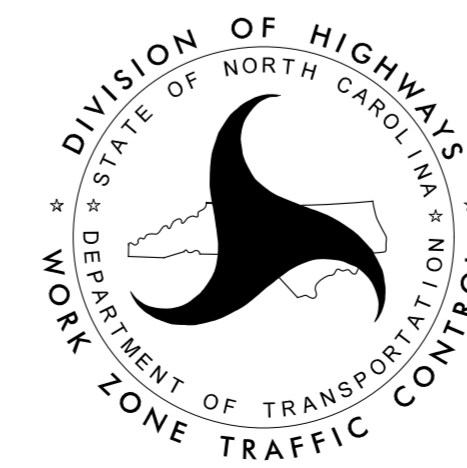


N.C.D.O.T. WORK ZONE TRAFFIC CONTROL
1561 MAIL SERVICE CENTER (MSC) RALEIGH, NC 27699-1561
750 N. GREENFIELD PARKWAY, GARNER, NC 27529 (DELIVERY)
PHONE: (919) 773-2800 FAX: (919) 771-2745

J. E. HUMMER, PhD, P.E. STATE TRAFFIC MANAGEMENT ENGINEER
TRAFFIC CONTROL PROJECT ENGINEER

S. COLEMAN, P.E. TRAFFIC CONTROL PROJECT DESIGN ENGINEER

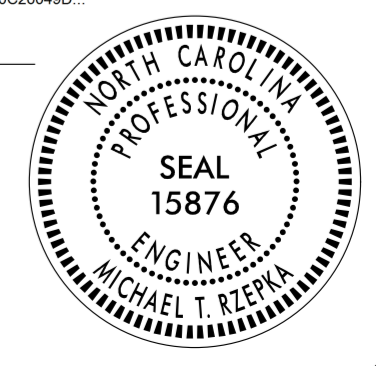
A. LYUDMIRSKAYA TRAFFIC CONTROL DESIGN ENGINEER



HR ICA 5121 Kingdom Way,
Suite 100
Raleigh, NC 27607
NC License No: F-0258

APPROVED: *Michael T. Rzepka*
DATE: 7/27/2017

SEAL



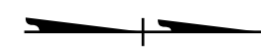
ROADWAY STANDARD DRAWINGS

THE FOLLOWING ROADWAY STANDARDS AS SHOWN IN "ROADWAY STANDARD DRAWINGS" - PROJECT SERVICES UNIT - N.C. DEPARTMENT OF TRANSPORTATION - RALEIGH, N.C., DATED JANUARY 2012 ARE APPLICABLE TO THIS PROJECT AND BY REFERENCE HEREBY ARE CONSIDERED A PART OF THESE PLANS:

<u>STD. NO.</u>	<u>TITLE</u>
1101.03	TEMPORARY ROAD CLOSURES
1101.11	TRAFFIC CONTROL DESIGN TABLES
1110.01	STATIONARY WORK ZONE SIGNS
1145.01	BARRICADES

LEGEND

GENERAL

 NORTH ARROW

TRAFFIC CONTROL DEVICES

 BARRICADE (TYPE III)

TEMPORARY SIGNING

 STATIONARY SIGN

7/27/2017
R:\Temp\B5362-Tmp-Title-1.dgn
ICA_Engineering

<p>APPROVED:  DATE: 7/27/2017</p> <p>SEAL</p> 		<p>ROADWAY STANDARD DRAWINGS & LEGEND</p>
<p>DOCUMENT NOT CONSIDERED FINAL UNLESS ALL SIGNATURES COMPLETED</p>		

MANAGEMENT STRATEGY

THIS PROJECT CONSISTS OF REPLACING A BRIDGE ON NC 73. DURING CONSTRUCTION, NC 73 WILL BE CLOSED AT THE CONSTRUCTION LIMITS AND TRAFFIC WILL BE PLACED ON AN OFF-SITE DETOUR ALONG SR 1003 (WINDBLOW RD.), SR 1637 (WINDBLOW RD.), US 220, I-73/I-74/US 220, AND NC 211.

NC 73 WILL BE REOPENED TO 2-LANE/2-WAY TRAFFIC PATTERN UPON COMPLETION OF CONSTRUCTION.

GENERAL NOTES

CHANGES MAY BE REQUIRED WHEN PHYSICAL DIMENSIONS IN THE DETAIL DRAWINGS, STANDARD DETAILS, AND ROADWAY DETAILS ARE NOT ATTAINABLE TO MEET FIELD CONDITIONS OR RESULT IN DUPLICATE OR UNDESIRED OVERLAPPING OF DEVICES. MODIFICATION MAY INCLUDE: MOVING, SUPPLEMENTING, COVERING, OR REMOVAL OF DEVICES AS DIRECTED BY THE ENGINEER.

THE FOLLOWING GENERAL NOTES APPLY AT ALL TIMES FOR THE DURATION OF THE CONSTRUCTION PROJECT EXCEPT WHEN OTHERWISE NOTED IN THE PLAN OR DIRECTED BY THE ENGINEER.

TRAFFIC PATTERN ALTERATIONS

- A) NOTIFY THE ENGINEER TWENTY ONE (21) CALENDAR DAYS PRIOR TO ANY TRAFFIC PATTERN ALTERATION.

SIGNING

- B) PROVIDE SIGNING AND DEVICES REQUIRED TO CLOSE THE ROAD ACCORDING TO THE ROADWAY STANDARD DRAWINGS AND TRAFFIC CONTROL PLANS.
 PROVIDE SIGNING REQUIRED FOR THE OFF-SITE DETOUR ROUTE AS SHOWN IN THE TRAFFIC CONTROL PLANS.
- C) COVER OR REMOVE ALL SIGNS AND DEVICES REQUIRED TO CLOSE THE ROAD WHEN ROAD CLOSURE IS NOT IN OPERATION.
 COVER OR REMOVE ALL SIGNS REQUIRED FOR THE OFF-SITE DETOUR WHEN THE DETOUR IS NOT IN OPERATION.
- D) ENSURE ALL NECESSARY SIGNING IS IN PLACE PRIOR TO ALTERING ANY TRAFFIC PATTERN.

PHASING

STEP 1

USING ROADWAY STANDARD DRAWING 1101.03 (SHEET 1 OF 9), INSTALL ROAD CLOSURE AND DETOUR/ALT ROUTE SIGNS, CLOSE NC 73 AND DETOUR TRAFFIC (SEE TMP-2 THRU TMP-5).

STEP 2

AWAY FROM TRAFFIC, REMOVE EXISTING BRIDGE.

STEP 3

AWAY FROM TRAFFIC, CONSTRUCT PROPOSED STRUCTURE AND ROADWAY.

STEP 4

AWAY FROM TRAFFIC, PLACE FINAL PAVEMENT MARKINGS AND MARKERS ON NC 73. OPEN NC 73 TO TRAFFIC IN EXISTING PATTERN.

STEP 5

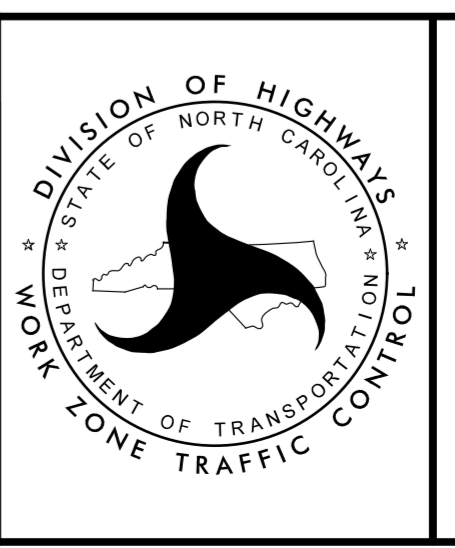
REMOVE ALL WORK ZONE TRAFFIC CONTROL DEVICES.

APPROVED: Michael T. Rzepka
DocuSigned by: Michael T. Rzepka 019C3480C28049D

DATE: 7/27/2017

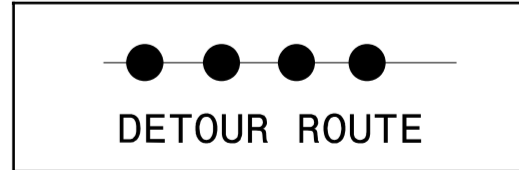
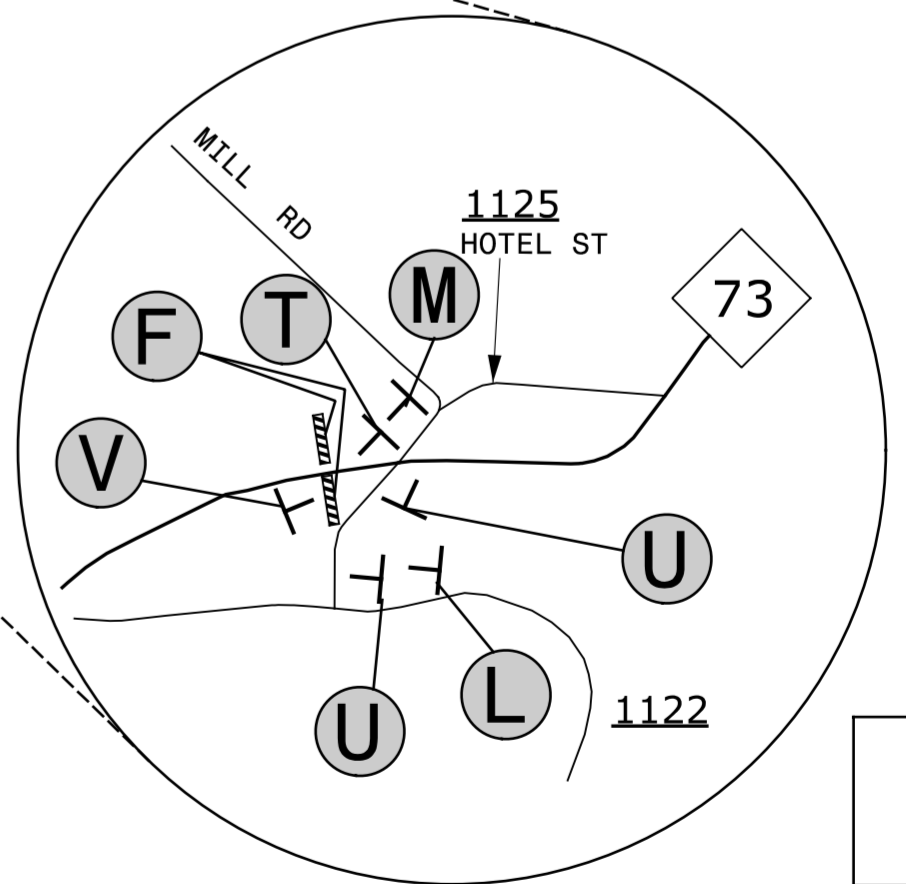
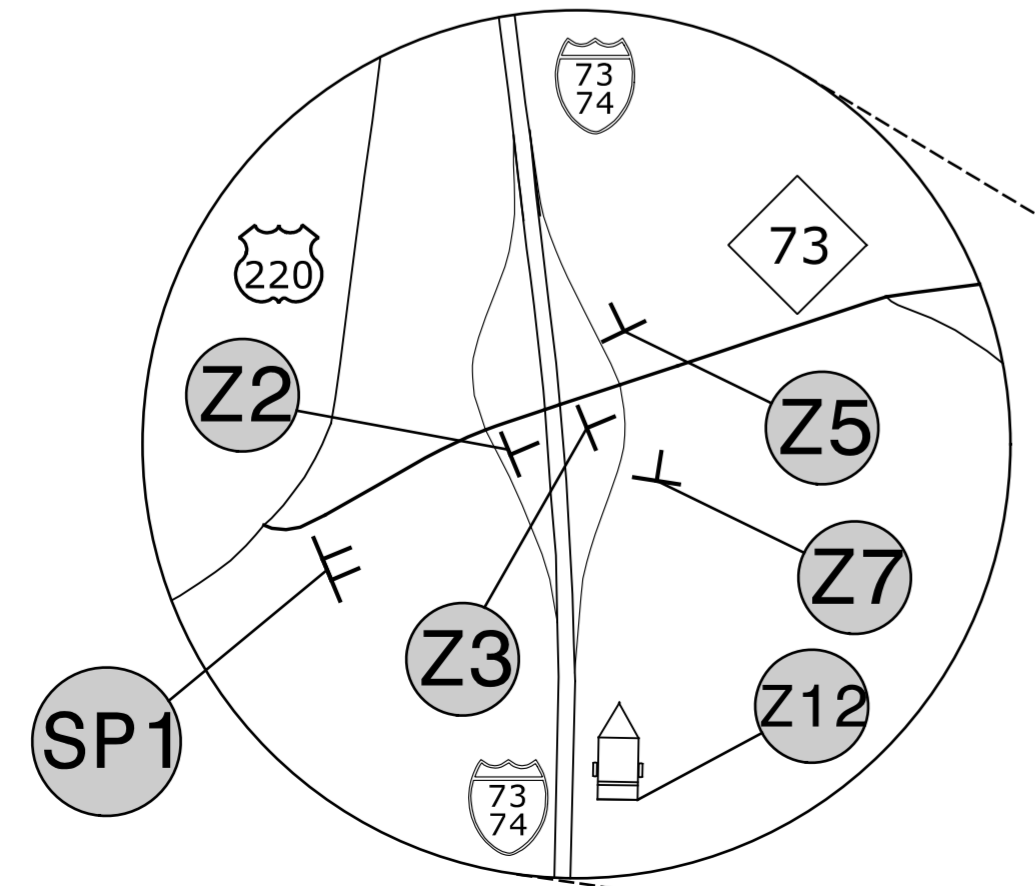
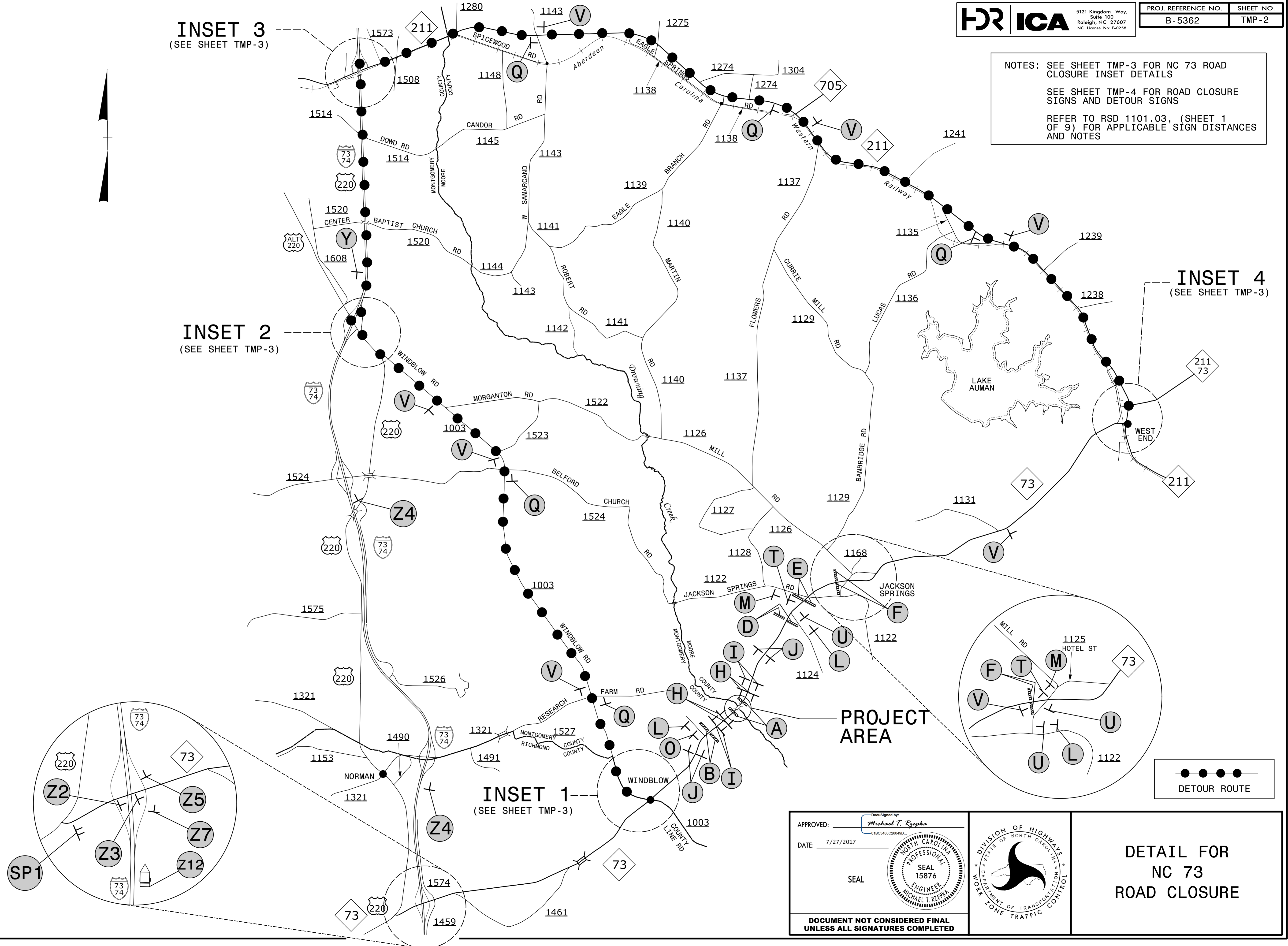
SEAL

DOCUMENT NOT CONSIDERED FINAL UNLESS ALL SIGNATURES COMPLETED

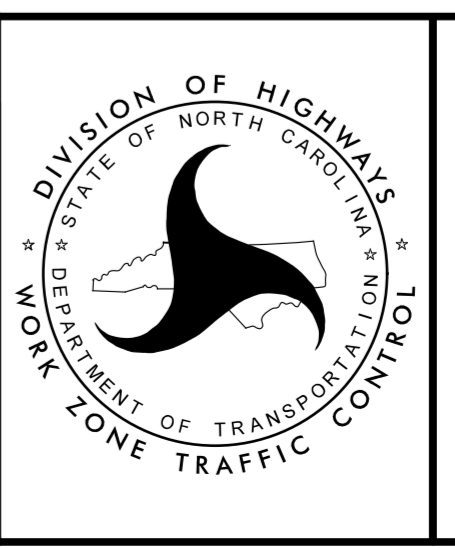


TRANSPORTATION OPERATIONS PLAN & PHASING

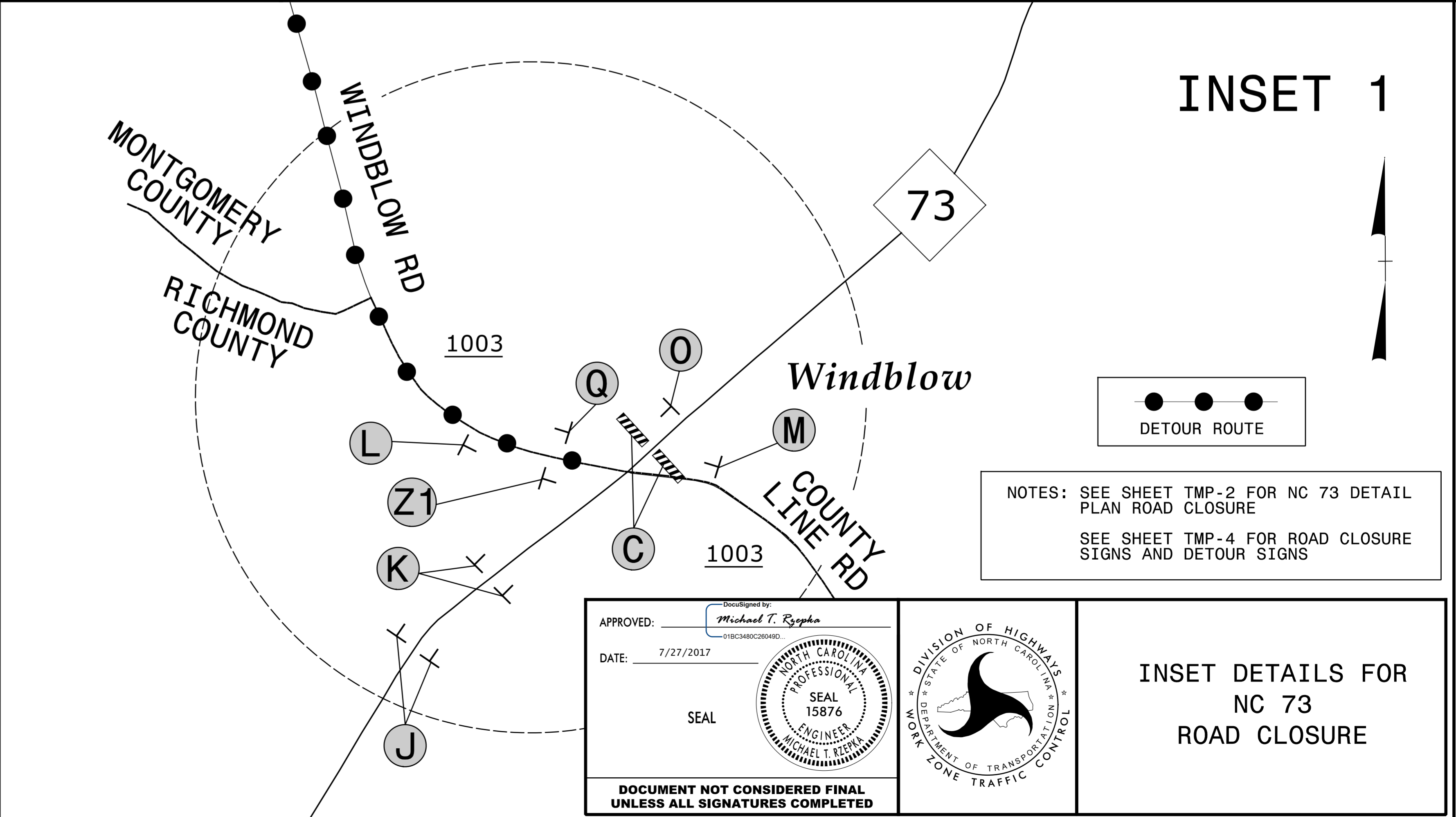
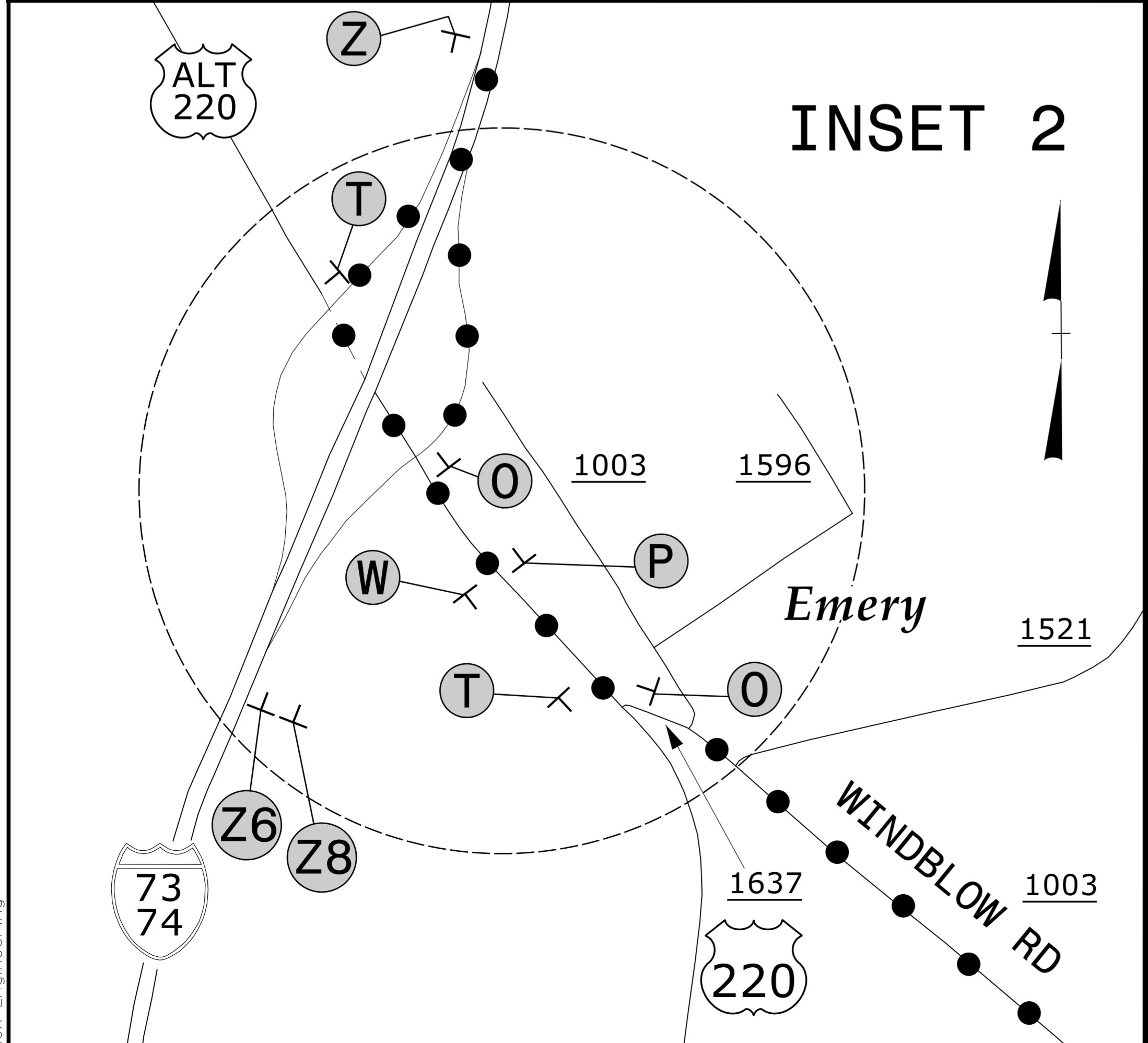
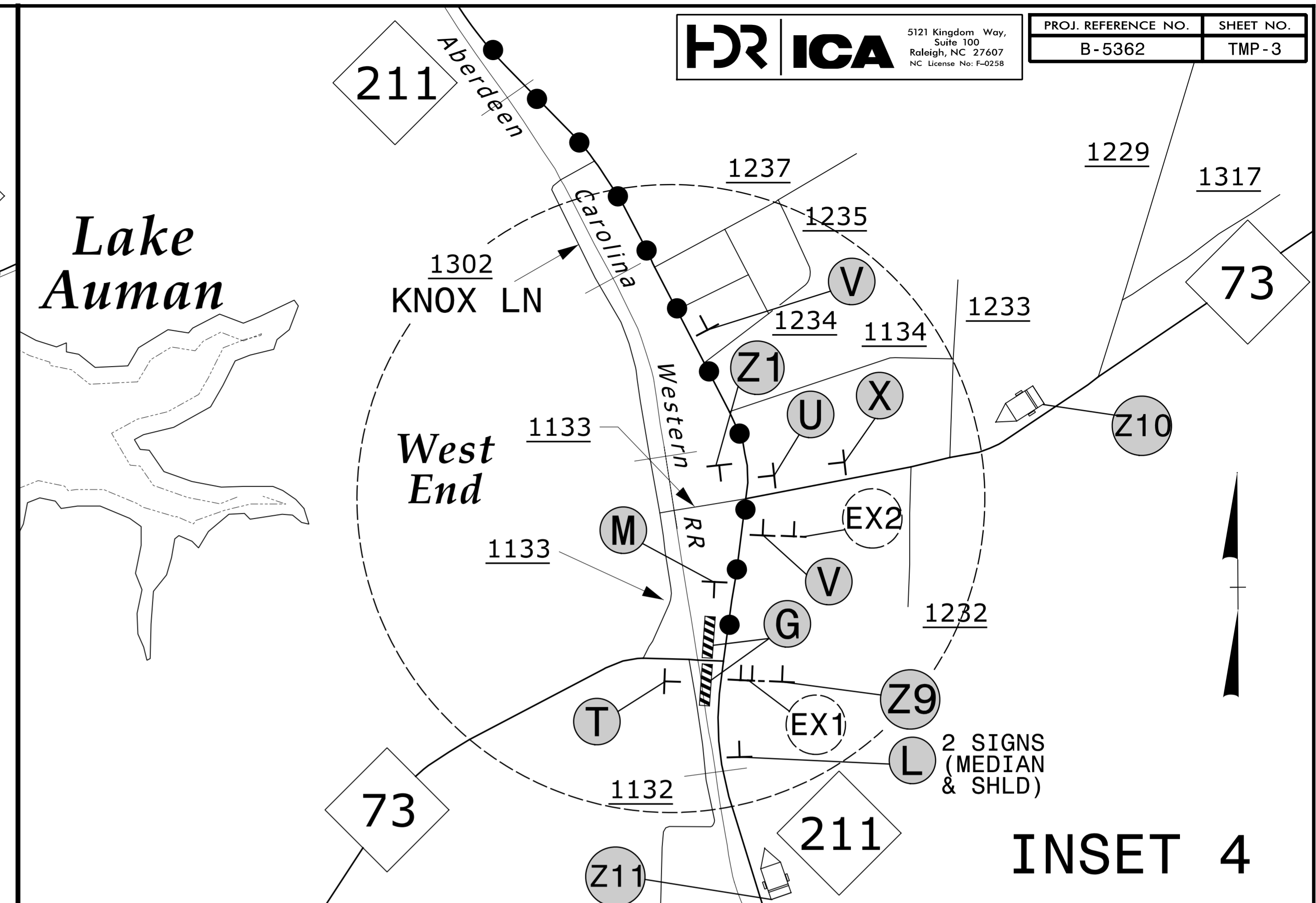
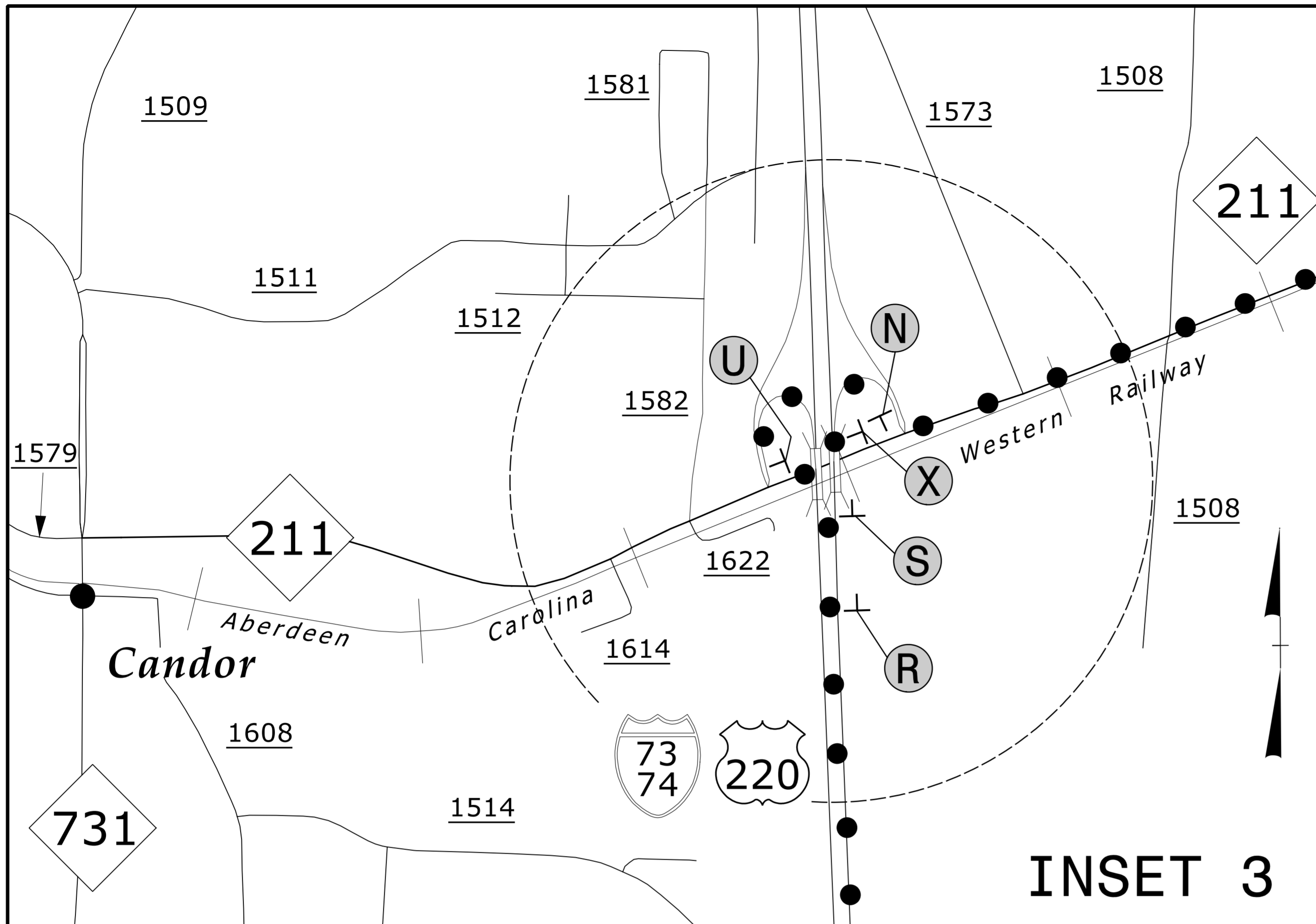
NOTES: SEE SHEET TMP-3 FOR NC 73 ROAD CLOSURE INSET DETAILS
 SEE SHEET TMP-4 FOR ROAD CLOSURE SIGNS AND DETOUR SIGNS
 REFER TO RSD 1101.03, (SHEET 1 OF 9) FOR APPLICABLE SIGN DISTANCES AND NOTES



APPROVED: *Michael T. Repko*
 DATE: 7/27/2017
 SEAL
 DOCUMENT NOT CONSIDERED FINAL
 UNLESS ALL SIGNATURES COMPLETED



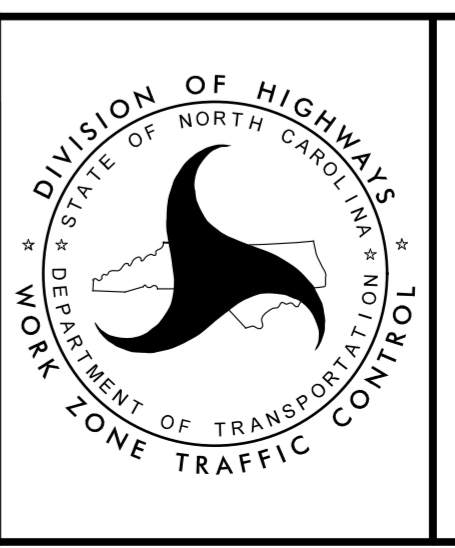
DETAIL FOR
 NC 73
 ROAD CLOSURE



APPROVED: *Michael T. Rzepka*
 DATE: 7/27/2017

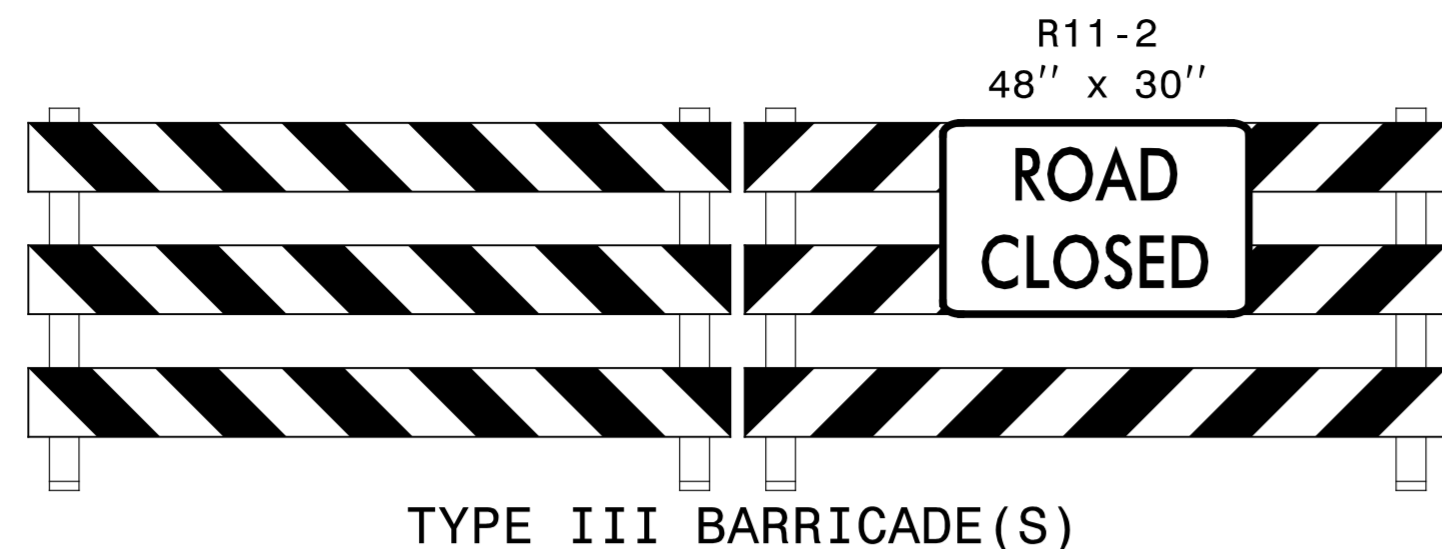
SEAL

DOCUMENT NOT CONSIDERED FINAL UNLESS ALL SIGNATURES COMPLETED



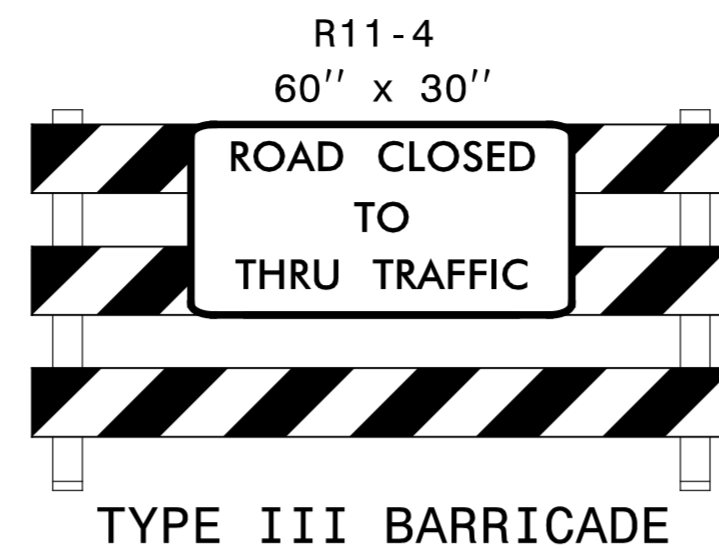
INSET DETAILS FOR NC 73 ROAD CLOSURE

7/27/2017 R:\Temp\5362-tmp-detour-3.dgn ICA Engineering



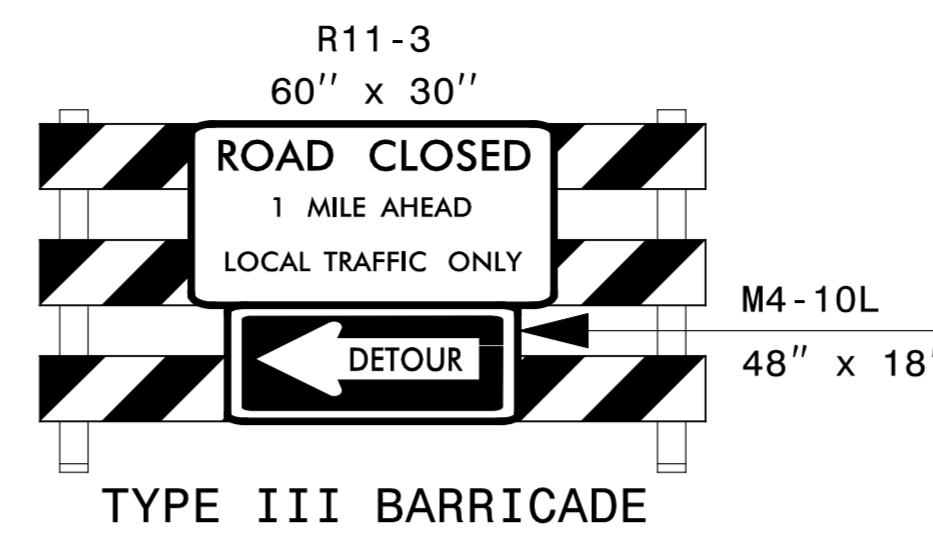
TYPE III BARRICADE(S)

(A)



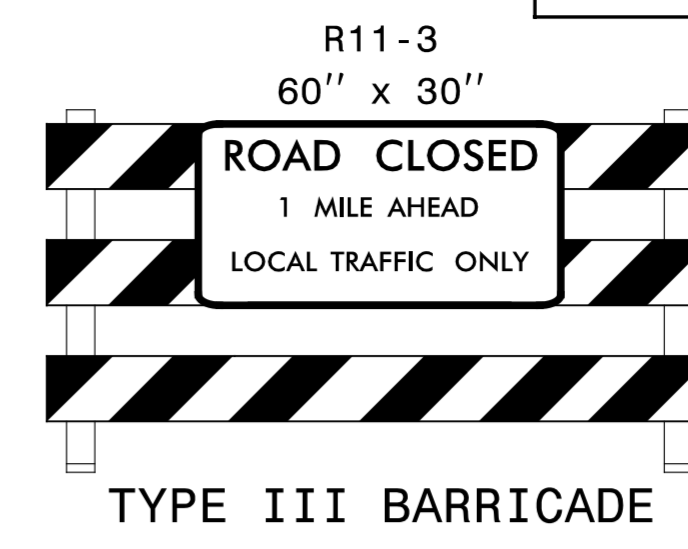
TYPE III BARRICADE

(B)



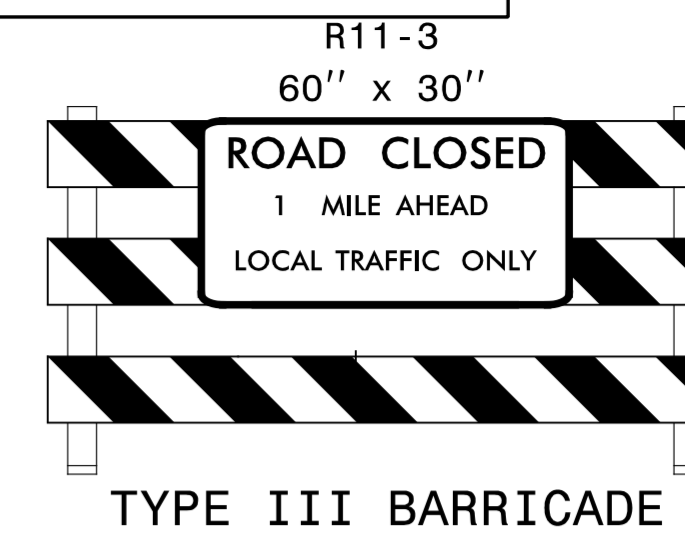
TYPE III BARRICADE

(C)



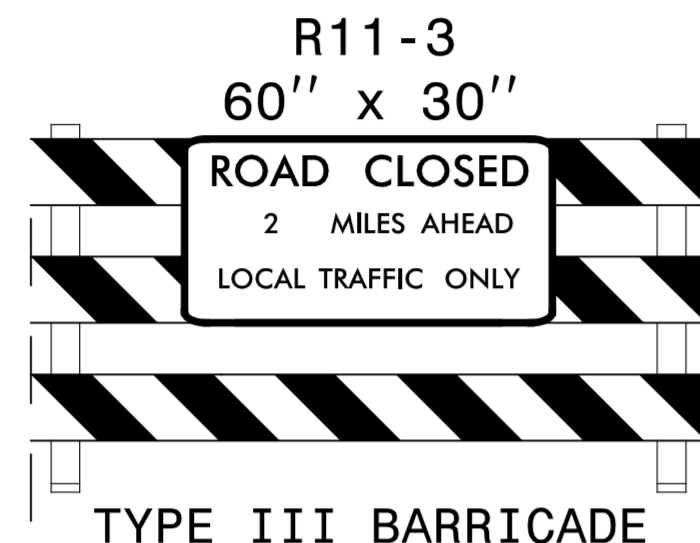
TYPE III BARRICADE

(D)



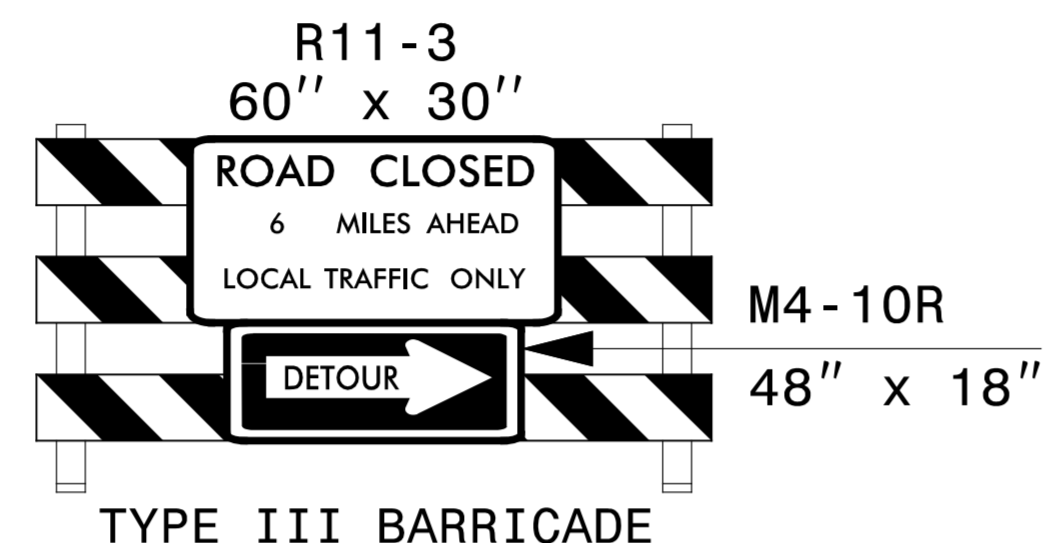
TYPE III BARRICADE

(E)



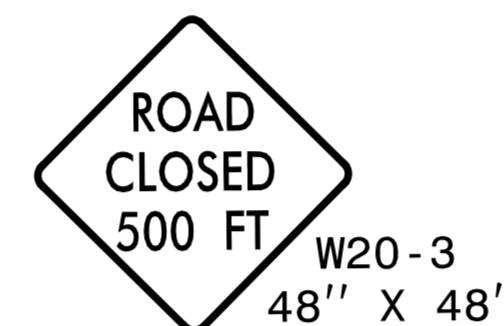
TYPE III BARRICADE

(F)

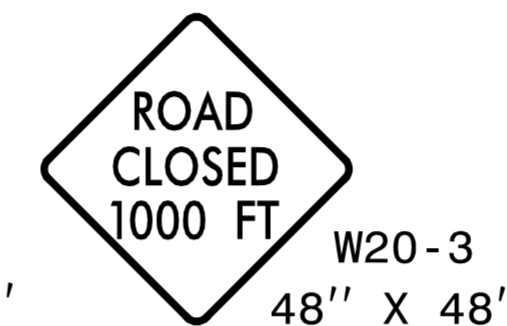


TYPE III BARRICADE

(G)



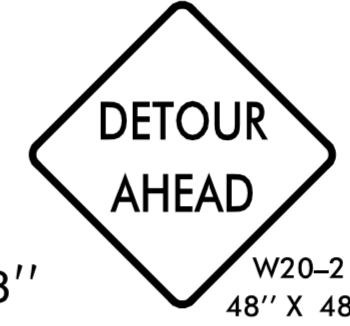
(H)



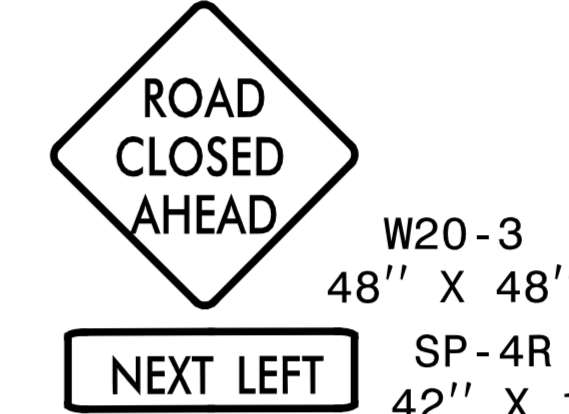
(I)



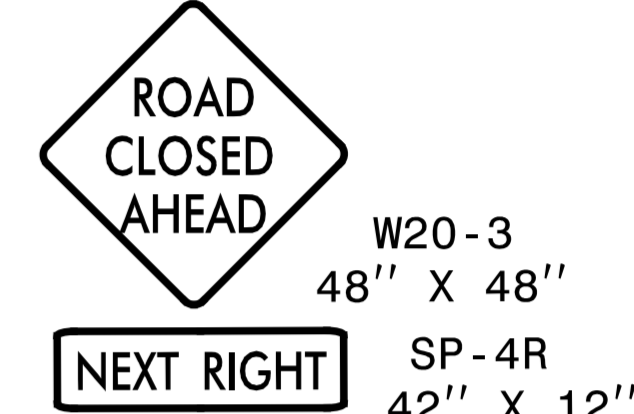
(J)



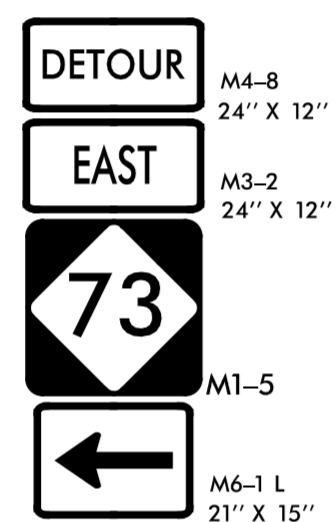
(K)



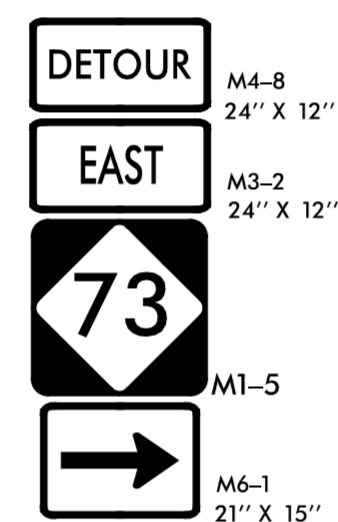
(L)



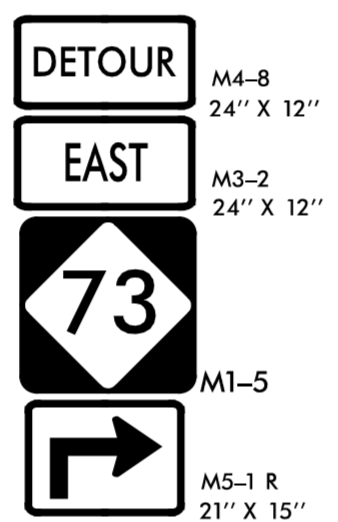
(M)



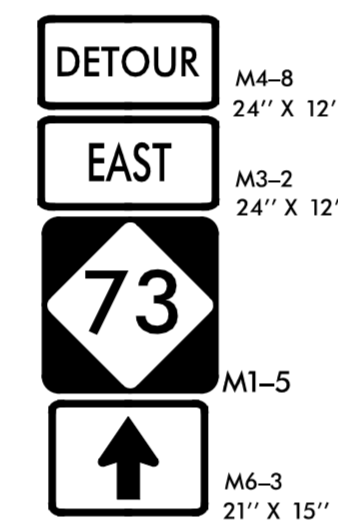
(N)



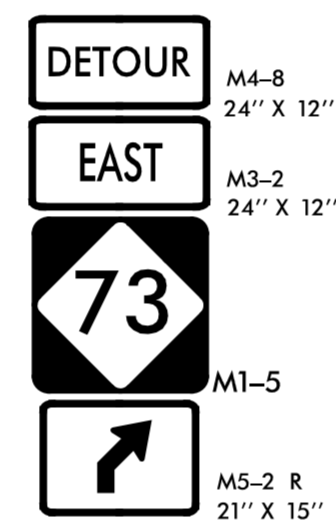
(O)



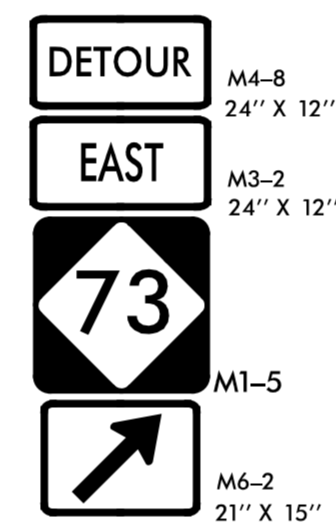
(P)



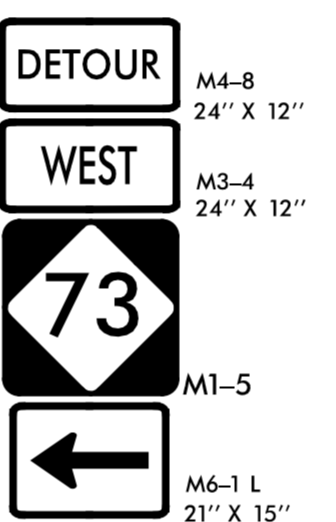
(Q)



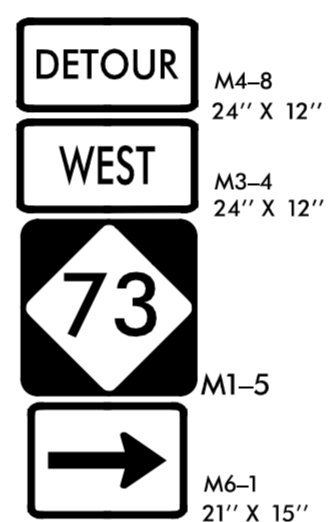
(R)



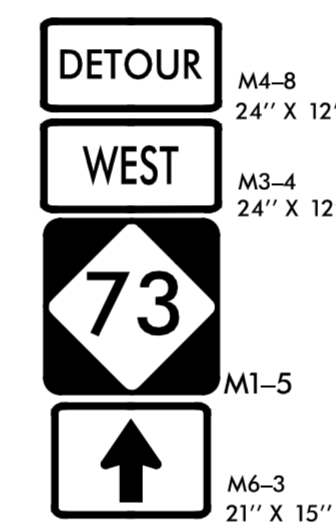
(S)



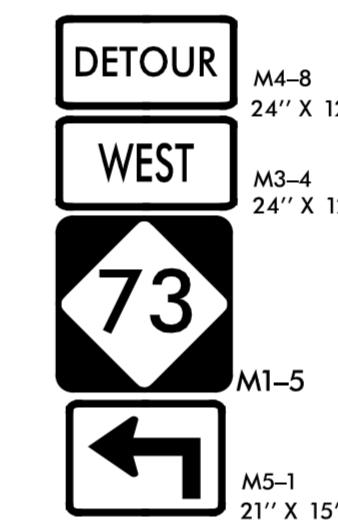
(T)



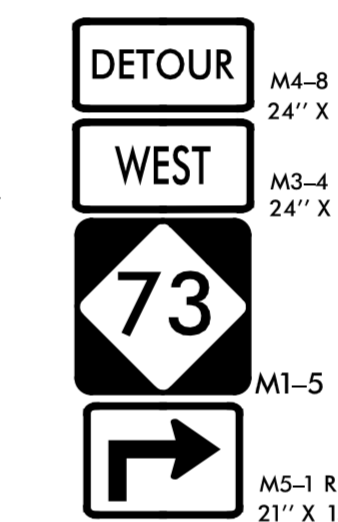
(U)



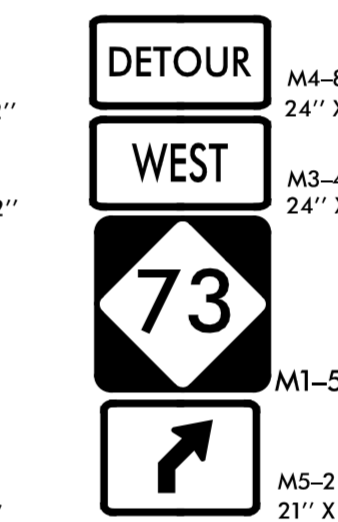
(V)



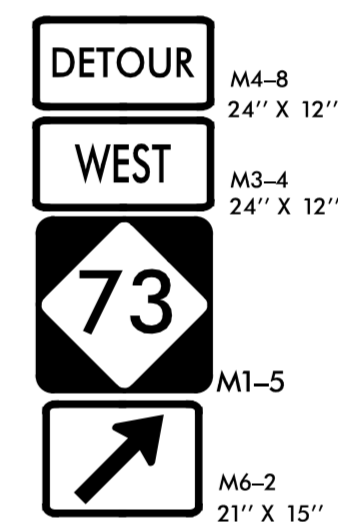
(W)



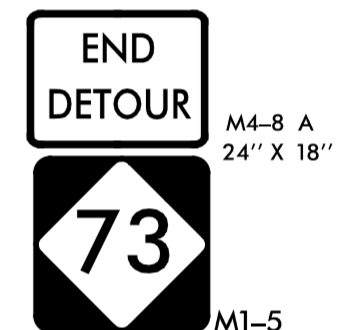
(X)



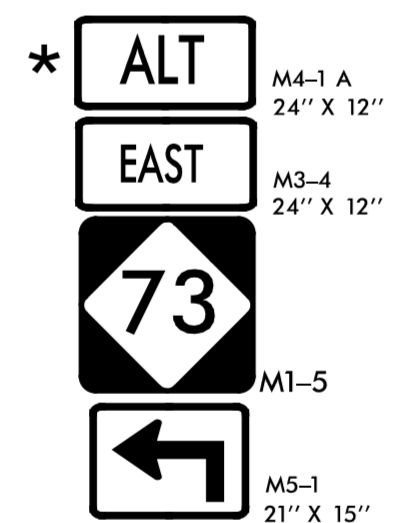
(Y)



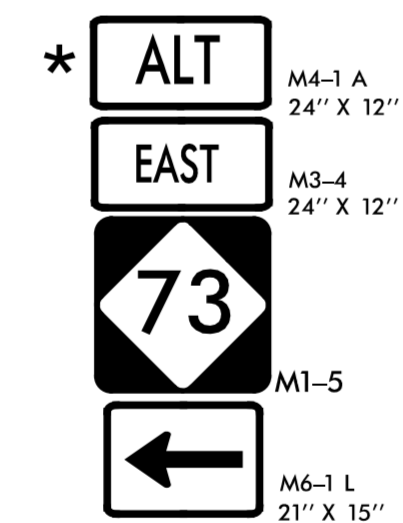
(Z)



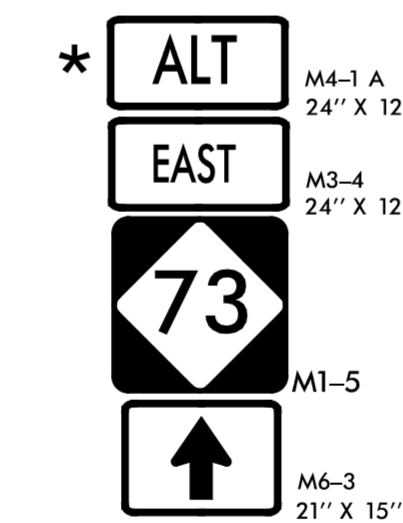
(Z1)



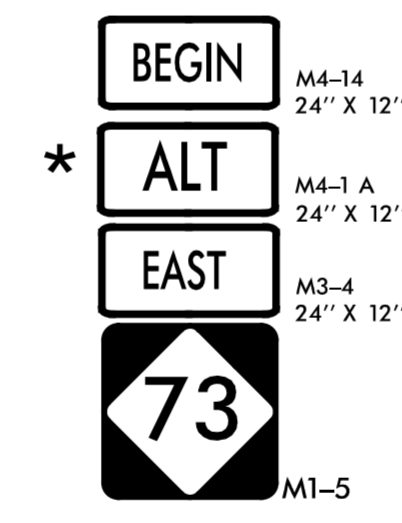
(Z2)



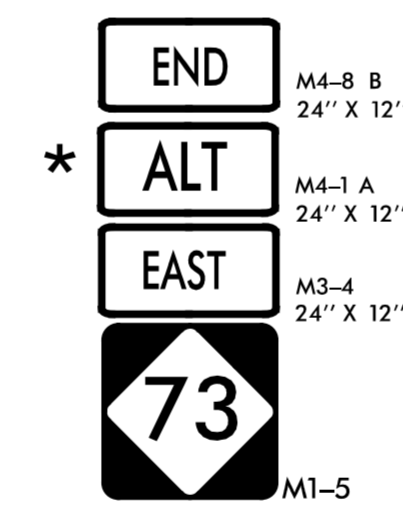
(Z3)



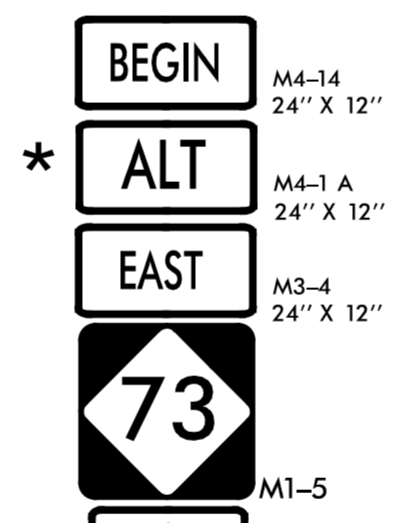
(Z4)



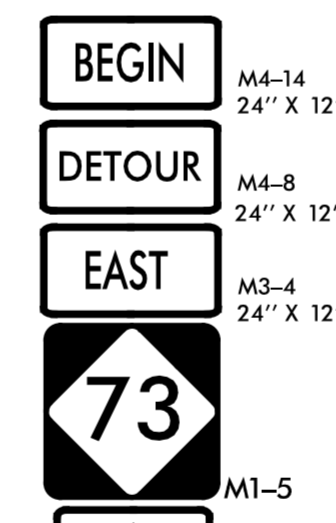
(Z5)



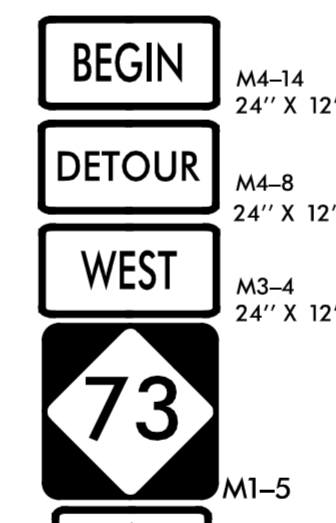
(Z6)



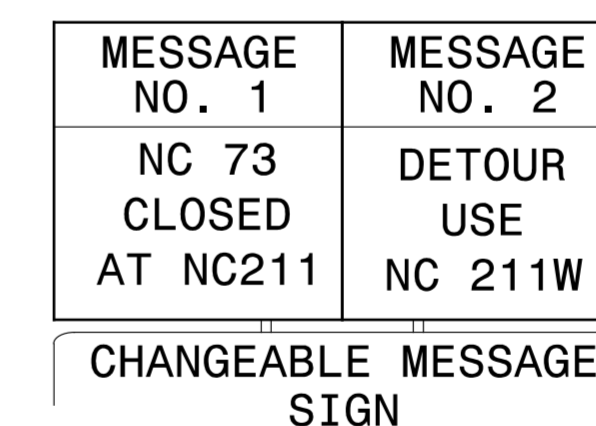
(Z7)



(Z8)

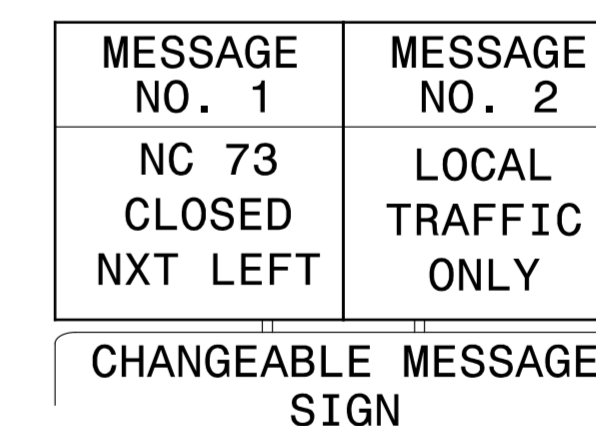


(Z9)

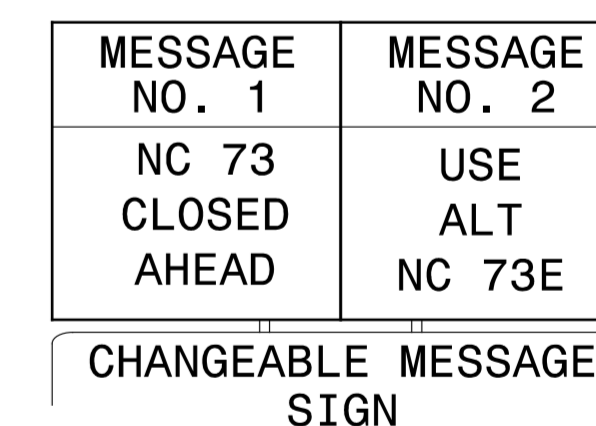


(Z10)

MESSAGES AS SHOWN OR AS DIRECTED BY THE ENGINEER

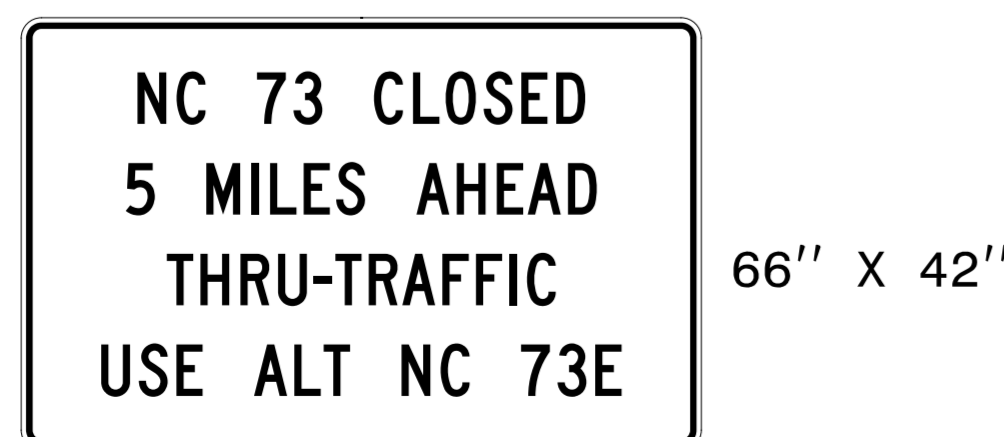


(Z11)

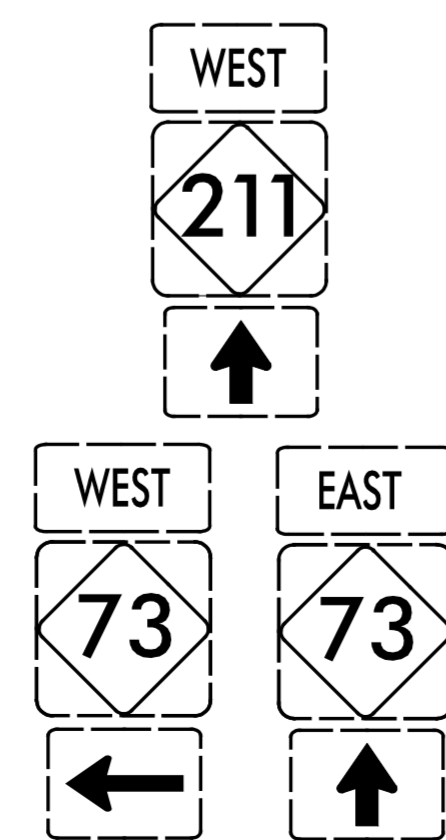


(Z12)

* M4-1A SIGN BACKGROUND
 NC GRADE B FLUORESCENT
 ORANGE RETROREFLECTIVE
 SHEETING



(SP1)



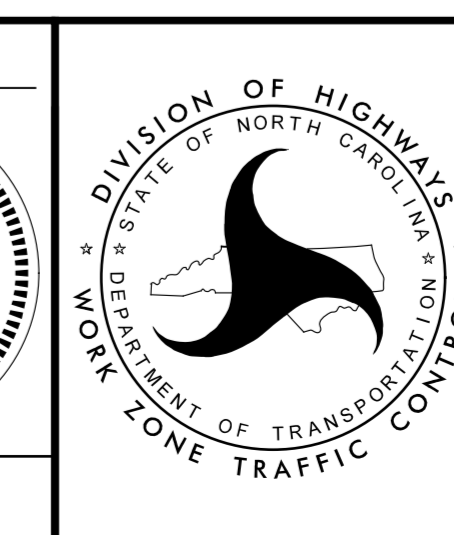
(EX1)



(EX2)

DELINEATE WITH DRUMS

APPROVED: *Michael T. Rzepka*
 DATE: 7/27/2017
 SEAL
 DOCUMENT NOT CONSIDERED FINAL UNLESS ALL SIGNATURES COMPLETED



ROAD CLOSURE SIGNS
 AND DETOUR SIGNS

SIGN NUMBER: SP1 **BACKG COLOR:** Fluorescent Orange
TYPE: STATIONARY **COPY COLOR:** Black
QUANTITY: SEE PLANS

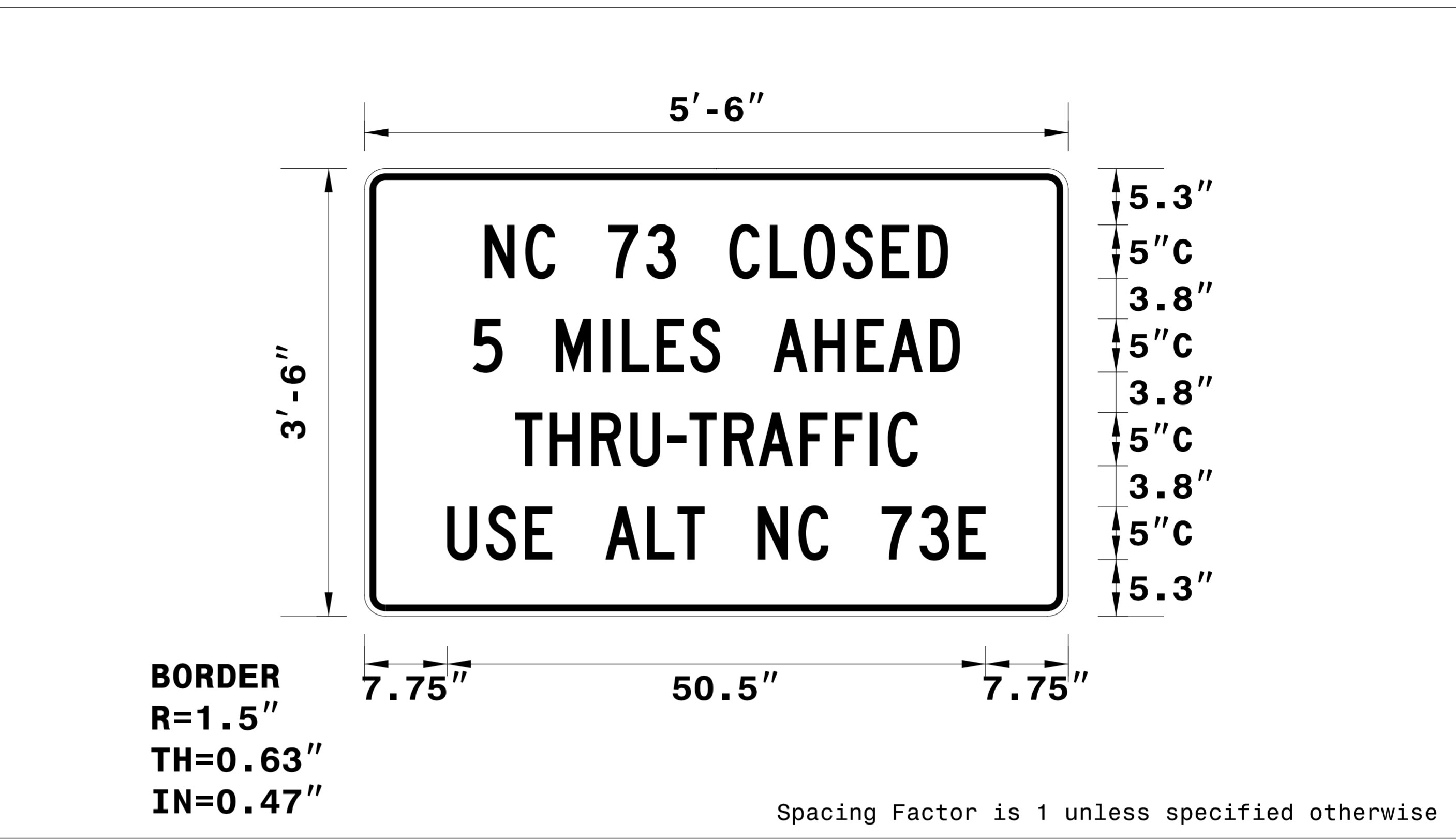
SYMBOL	X	Y	WID	HT

SIGN WIDTH: 5'-6"
HEIGHT: 3'-6"
TOTAL AREA: 19.3 Sq.Ft.

BORDER TYPE: INSET
RECESS: 0.47"
WIDTH: 0.63"
RADII: 1.5"

NO. Z BARS: **MAT'L:** 0.080" (2.0 mm) ALUMINUM
LENGTH:

DESIGN BY: mtr **CHECKED BY:** **May 02, 2017**
PROJECT ID: B-5362 **LOCATION:** **DIV:** 8



USE NOTES: 1,2

- Legend and border shall be direct applied black non-reflective sheeting.
- Background shall be NC GRADE B fluorescent orange retroreflective sheeting.

LETTER POSITIONS

Letter spacings are to start of next letter

	N	C	7	3	C	L	O	S	E	D											Series/Size		
	11.3	3.8	2.8	5	3.6	2.8	5	3.8	3.2	3.7	3.7	3.4	2.8	11.3								C 2000	
		5		M	I	L	E	S		A	H	E	A	D									C 2000
	10.1	2.8	5	4.4	1.8	3.3	3.2	2.8	5	3.9	3.9	3	3.9	2.8	10.2								43.5
		T	H	R	U	-	T	R	A	F	F	I	C										C 2000
	14.1	3.3	3.9	3.7	3.5	2	3.3	3.3	3.9	3.3	3.3	1.7	2.8	14.1									37.8
		U	S	E		A	L	T		N	C		7	3	E								C 2000
	7.8	3.7	3.7	2.6	5	3.9	2.9	2.5	5	3.8	2.8	5	3.6	3.7	2.6	7.8							50.5

FILENAME: b5362_tmp_sign design_5 NORTH CAROLINA D.O.T. SIGN DETAIL

7/27/2017 R:\tmp\b5362_tmp_sign design_5.dgn ICA Engineering

APPROVED: <i>Michael T. Rzepka</i> DATE: 7/27/2017 SEAL			SPECIAL SIGN DESIGN
DOCUMENT NOT CONSIDERED FINAL UNLESS ALL SIGNATURES COMPLETED			