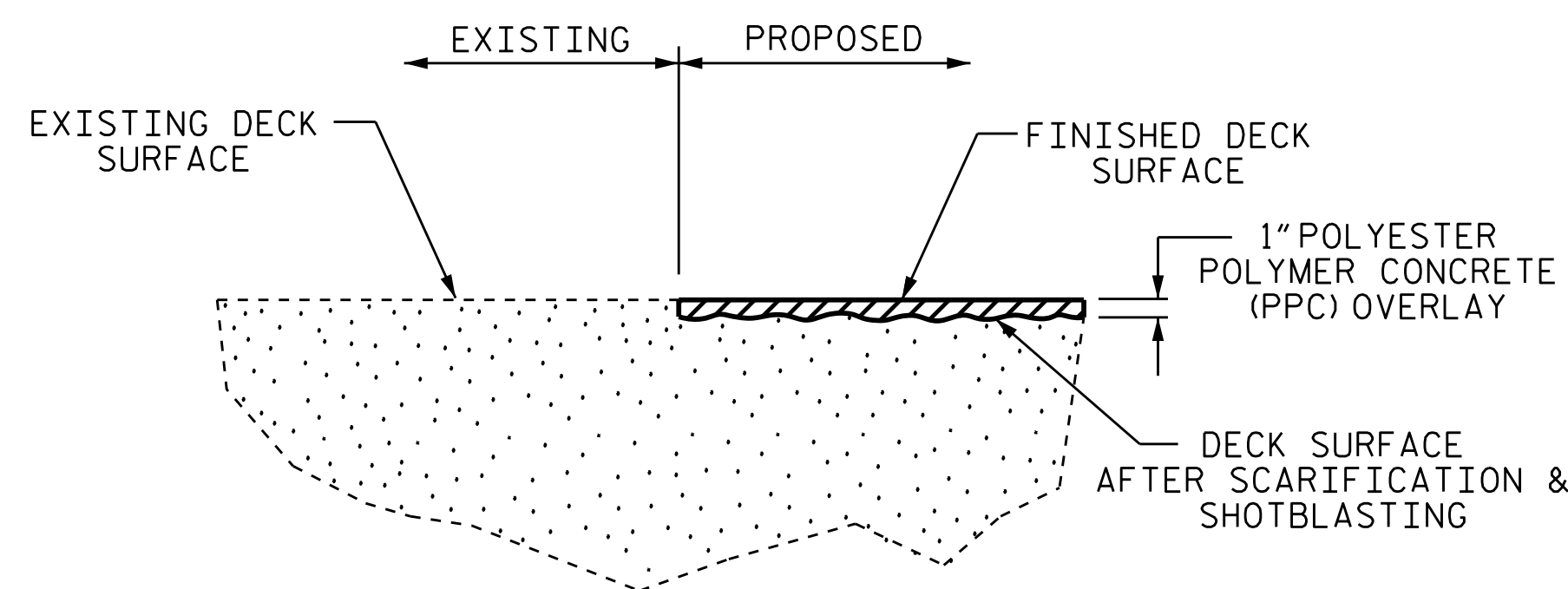
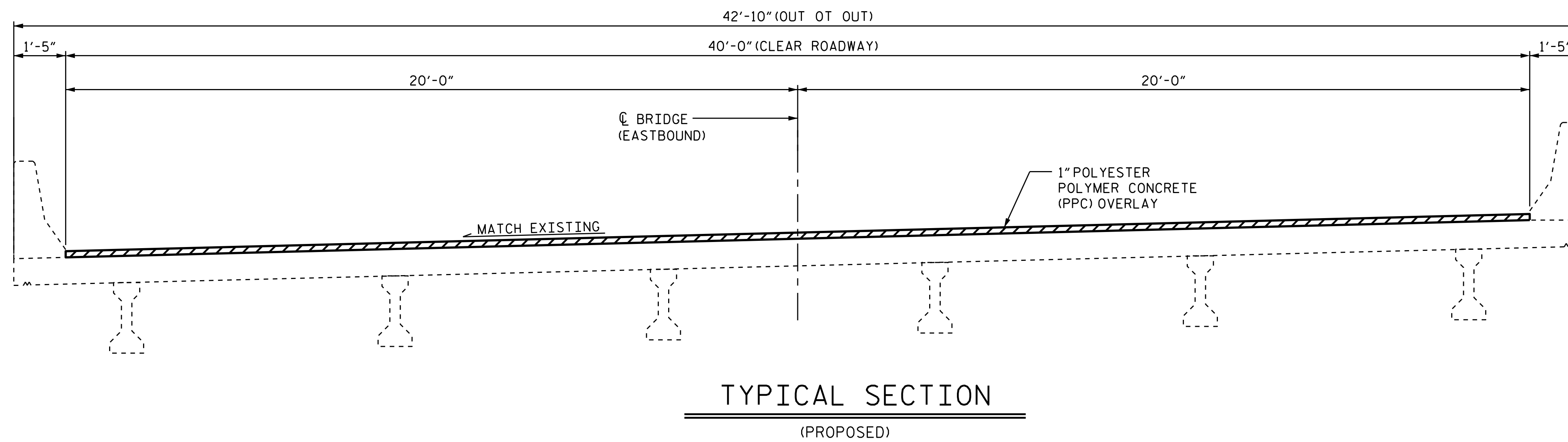
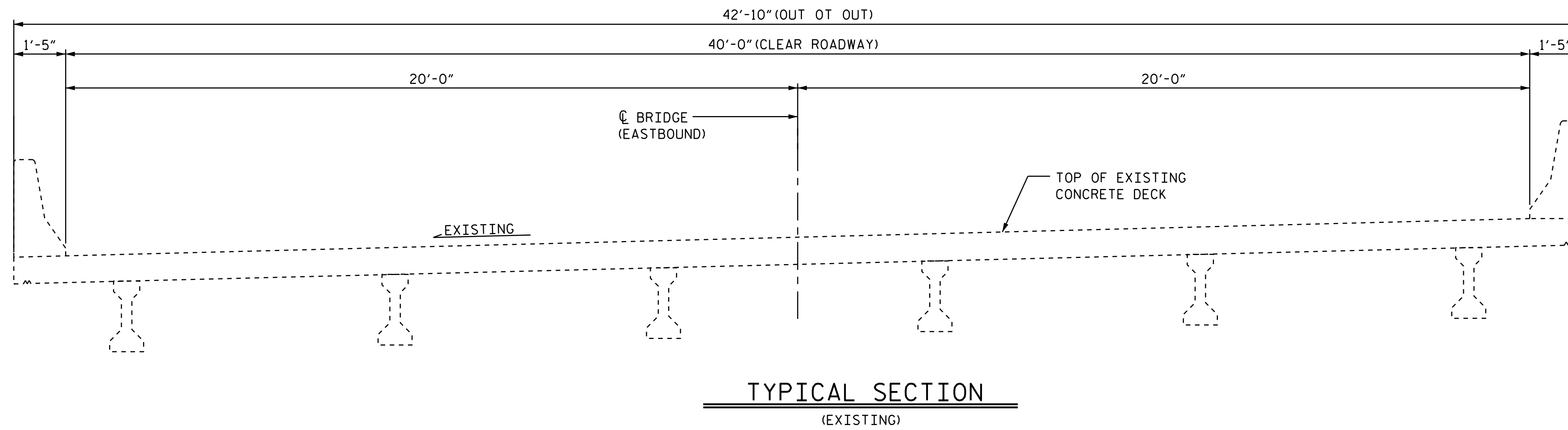
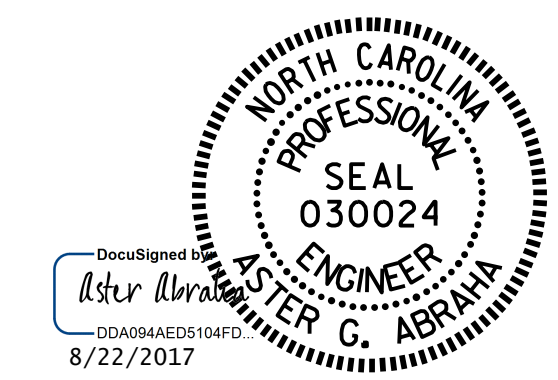


NOTE:
 SEE TRAFFIC MANAGEMENT PLANS FOR LANE WIDTHS, SEQUENCING, AND OTHER TRAFFIC CONTROL MEASURES FOR STAGING OF OVERLAY SURFACE PREPARATION AND POLYESTER POLYMER CONCRETE PLACEMENT.
 BRIDGE #497 SHOWN, BRIDGE # 498 SIMILAR



PROJECT NO. I-5781
JOHNSTON COUNTY
 BRIDGE NO. 497 & 498

STATE OF NORTH CAROLINA
 DEPARTMENT OF TRANSPORTATION
 RALEIGH
SUPERSTRUCTURE
 TYPICAL SECTION
 &
 PPC OVERLAY DETAILS



DRAWN BY : S. T. SANDOR DATE : 02/2017
 CHECKED BY : W. C. SMITH DATE : 06/2017

| REVISIONS | | | | | | SHEET NO. |
|-----------|-----|-------|-----|-----|-------|--------------|
| NO. | BY: | DATE: | NO. | BY: | DATE: | TOTAL SHEETS |
| 1 | | | 3 | | | S-55 |
| 2 | | | 4 | | | 69 |

DOCUMENT NOT CONSIDERED FINAL UNLESS ALL SIGNATURES COMPLETED