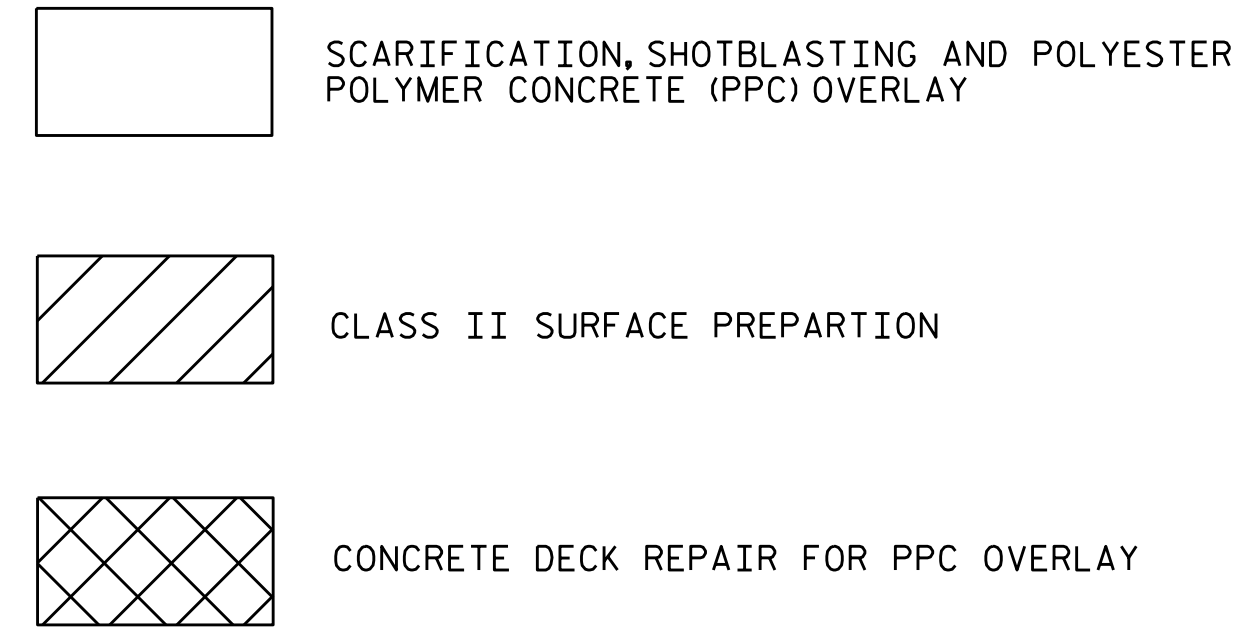


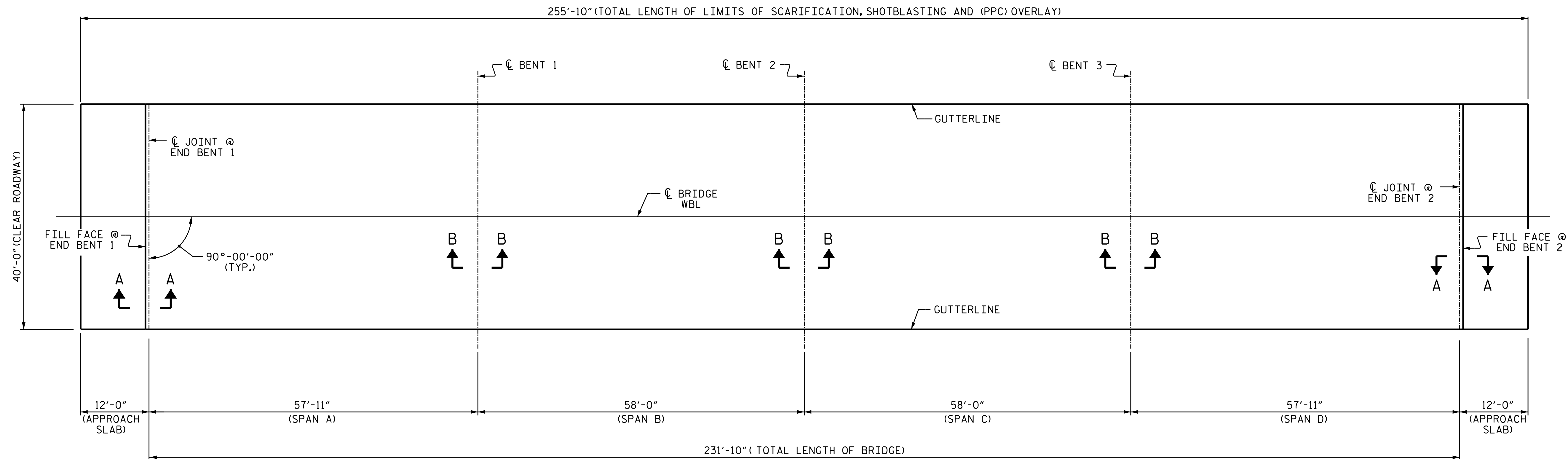
NO DECK REPAIRS NOTED DURING INSPECTION BY STRUCTURES MANAGEMENT UNIT, THE CONTRACTOR AND ENGINEER SHALL REINSPECT THE DECK FOR POTENTIAL REPAIRS.



### AS-BUILT REPAIR QUANTITY TABLE

	ESTIMATE	ACTUAL
SCARIFYING BRIDGE DECK	1,137 SY	
CLASS II SURFACE PREPARATION	1.0 SY	
CONCRETE DECK REPAIR FOR PPC OVERLAY	1.0 SY	
SHOTBLASTING BRIDGE DECK	1,137 SY	
PPC MATERIALS	31.5 CY	
PLACING AND FINISHING PPC OVERLAY	1,137 SY	
GROOVING BRIDGE FLOORS	9,399 SF	

QUANTITIES IN TABLES REPRESENT ESTIMATED VALUES OF CLASS II SURFACE PREPARATION AND CONCRETE DECK REPAIR FOR PPC OVERLAY AFTER REMOVAL OF SNOWPLOWABLE MARKERS AND UNSOUND CONCRETE (MIN. 2" CLEAR TO SAW CUT). SEE OVERLAY SURFACE PREPARATION FOR POLYESTER POLYMER CONCRETE SPECIAL PROVISION.



### PLAN OF SPANS

### NOTES

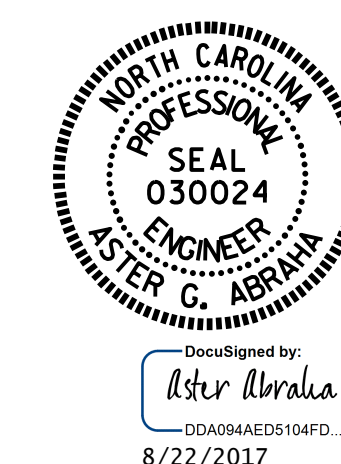
ESTIMATED QUANTITIES ARE GIVEN WITH THE BEST INFORMATION AVAILABLE. IF ADDITIONAL REPAIRS NOT SHOWN ON THE DRAWINGS ARE DEEMED NECESSARY BY THE ENGINEER, THE ENGINEER WILL NOTE ON THE DRAWINGS THE APPROXIMATE LOCATIONS AND DESCRIPTION OF THE REPAIRS AND ADJUST THE ACTUAL QUANTITIES ENTERED INTO THE AS-BUILT REPAIR QUANTITY TABLE.

FOR SECTION A-A AND B-B, SEE "JOINT DETAILS" SHEET S-15.

FOR SCARIFYING BRIDGE DECK, SHOTBLASTING BRIDGE DECK AND CLASS II SURFACE PREPARATION, SEE OVERLAY SURFACE PREPARATION FOR POLYESTER POLYMER CONCRETE SPECIAL PROVISION.

FOR CONCRETE DECK REPAIR FOR PPC OVERLAY, PPC MATERIALS, AND PLACING AND FINISHING PPC OVERLAY SEE POLYESTER POLYMER CONCRETE BRIDGE DECK OVERLAY SPECIAL PROVISION.

PROJECT NO. I-5781  
JOHNSTON COUNTY  
 BRIDGE NO. 469



STATE OF NORTH CAROLINA  
 DEPARTMENT OF TRANSPORTATION  
 RALEIGH

**SUPERSTRUCTURE**

**SURFACE PREPARATION & PPC OVERLAY**

DRAWN BY : M.K. BEARD / S. T. SANDOR DATE : 06/2017  
 CHECKED BY : W.C. SMITH DATE : 06/2017

DOCUMENT NOT CONSIDERED FINAL UNLESS ALL SIGNATURES COMPLETED

REVISIONS						SHEET NO.
NO.	BY:	DATE:	NO.	BY:	DATE:	S-5
1			3			TOTAL SHEETS
2			4			69