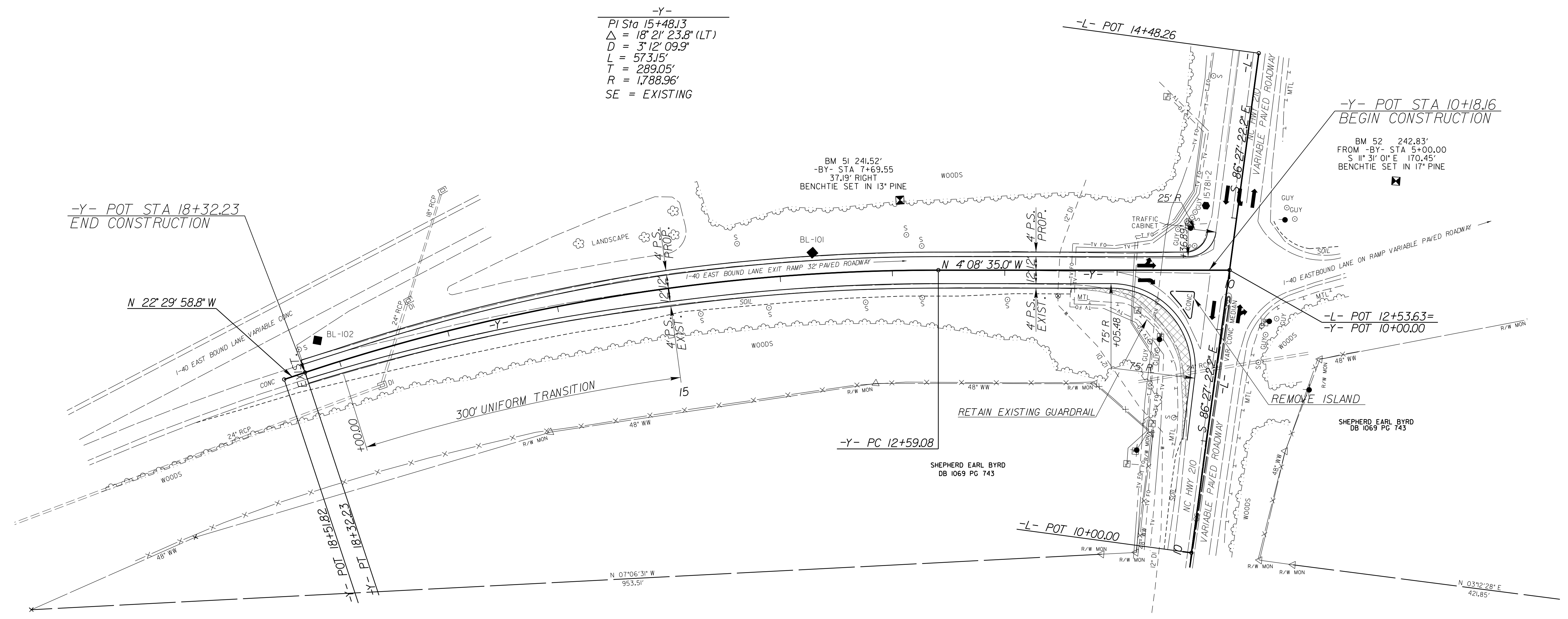


SEPI
ENGINEERING &
CONSTRUCTION

1025 Wade Avenue
Raleigh, NC 27605
Tel: 919-789-9977
Fax: 919-789-9591
License: C-2197

PROJECT REFERENCE NO. 1-5781	SHEET NO. 4
RW SHEET NO.	
ROADWAY DESIGN ENGINEER	
Steven L. Scott <small>REGISTERED PROFESSIONAL ENGINEER</small>	
DOCUMENT NOT CONSIDERED FINAL UNLESS ALL SIGNATURES COMPLETED	

NAD 83/NA 2011



-Y-
PI Sta 15+48.13
 $\Delta = 18^\circ 21' 23.8''$ (LT)
 $D = 3^\circ 12' 09.9''$
 $L = 573.15'$
 $T = 289.05'$
 $R = 1,788.96'$
SE = EXISTING

-Y- POT STA 18+32.23
END CONSTRUCTION

-Y- POT STA 10+18.16
BEGIN CONSTRUCTION

BM 52 242.83'
FROM -BY- STA 5+00.00
S $11^\circ 31' 01''$ E 170.45'
BENCHTIE SET IN 17" PINE

-L- POT 12+53.63=
-Y- POT 10+00.00

-L- POT 10+00.00

-Y- PC 12+59.08