

09/08/17

See Sheet 1A For Index of Sheets
 See Sheet 1B For Conventional Symbols
 See Sheet 1C-1 For Survey Control Sheet

STATE OF NORTH CAROLINA
 DIVISION OF HIGHWAYS

JOHNSTON COUNTY

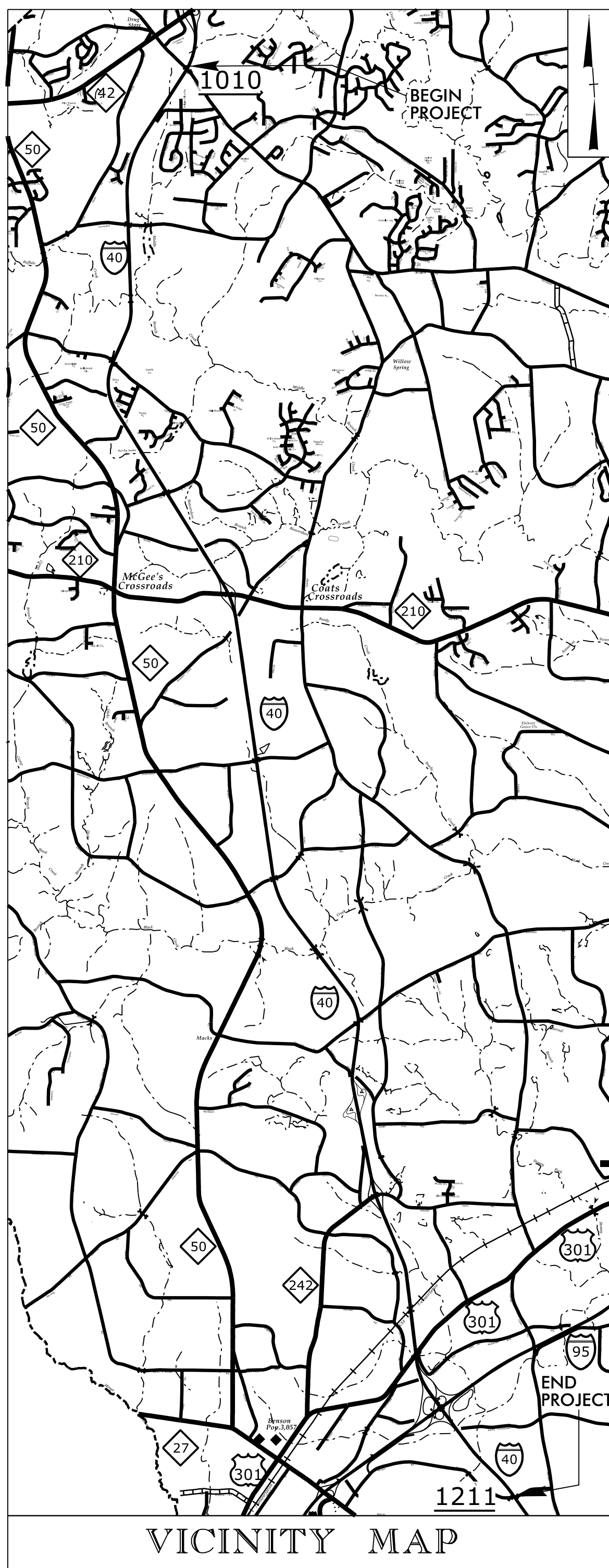
LOCATION: I-40 FROM SR 1010 (CLEVELAND ROAD) TO WEST OF SR 1211 (MORGAN ROAD)

TYPE OF WORK: PAVEMENT REHABILITATION, BRIDGE REHABILITATION, AND SIGNALS

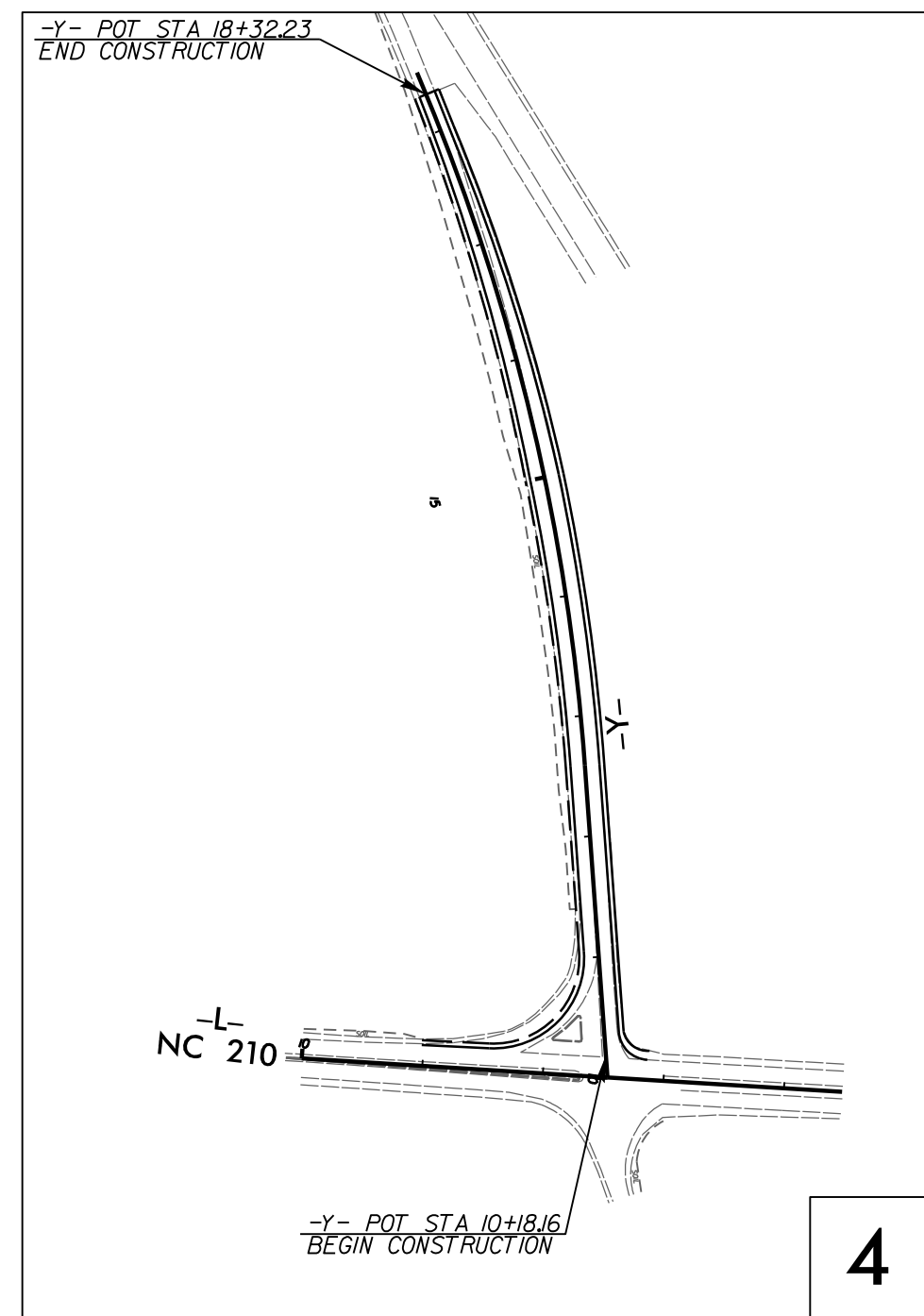
STATE	STATE PROJECT REFERENCE NO.	SHEET NO.	TOTAL SHEETS
N.C.	I-5781	1	
STATE PROJ. NO.	F.A. PROJ. NO.	DESCRIPTION	
53022.1.1	NHPIM-0040(050)	PE	
53022.3.1	NHPIM-0040(050)	CONST.	

TIP PROJECT: I-5781

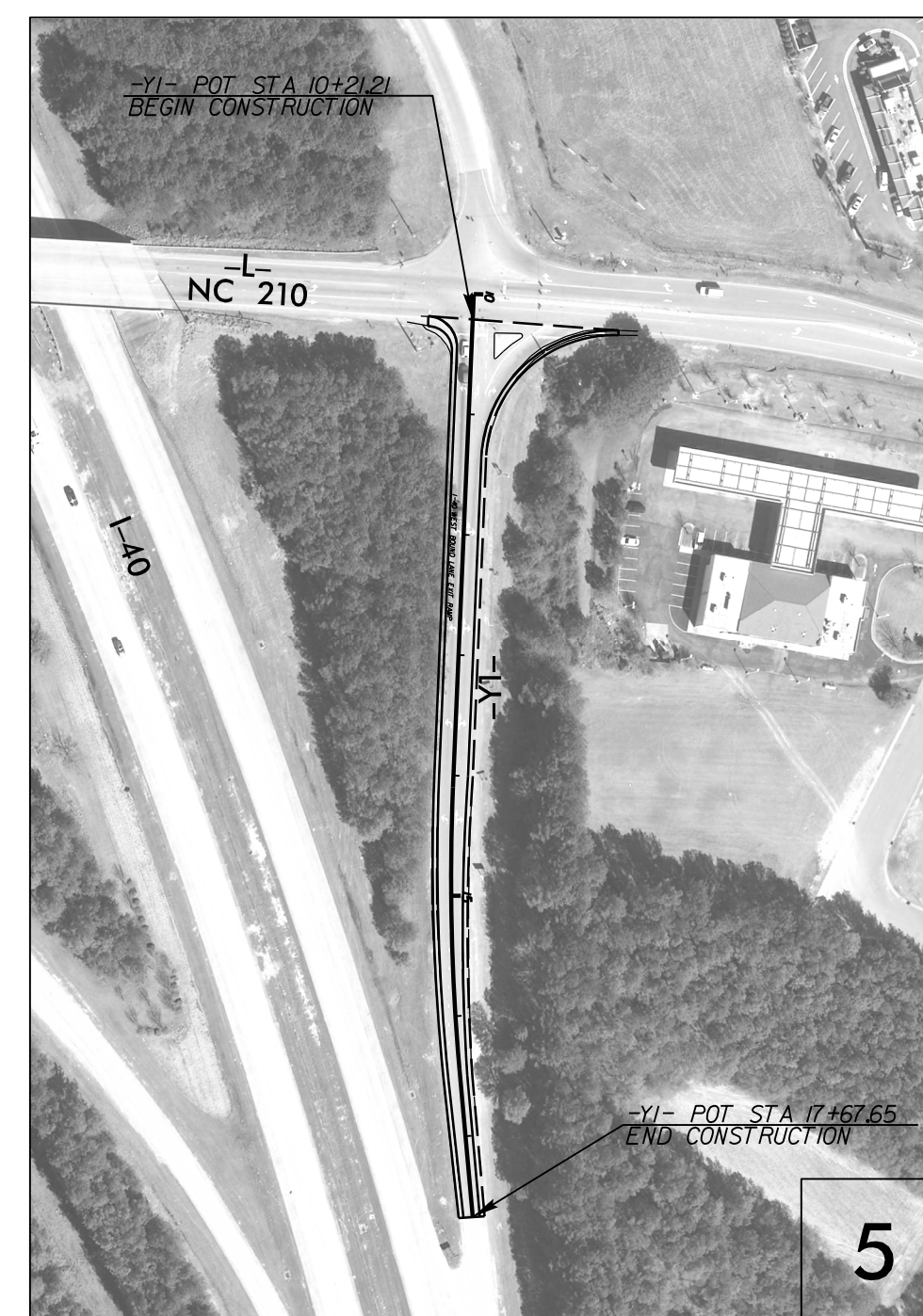
CONTRACT: C203977



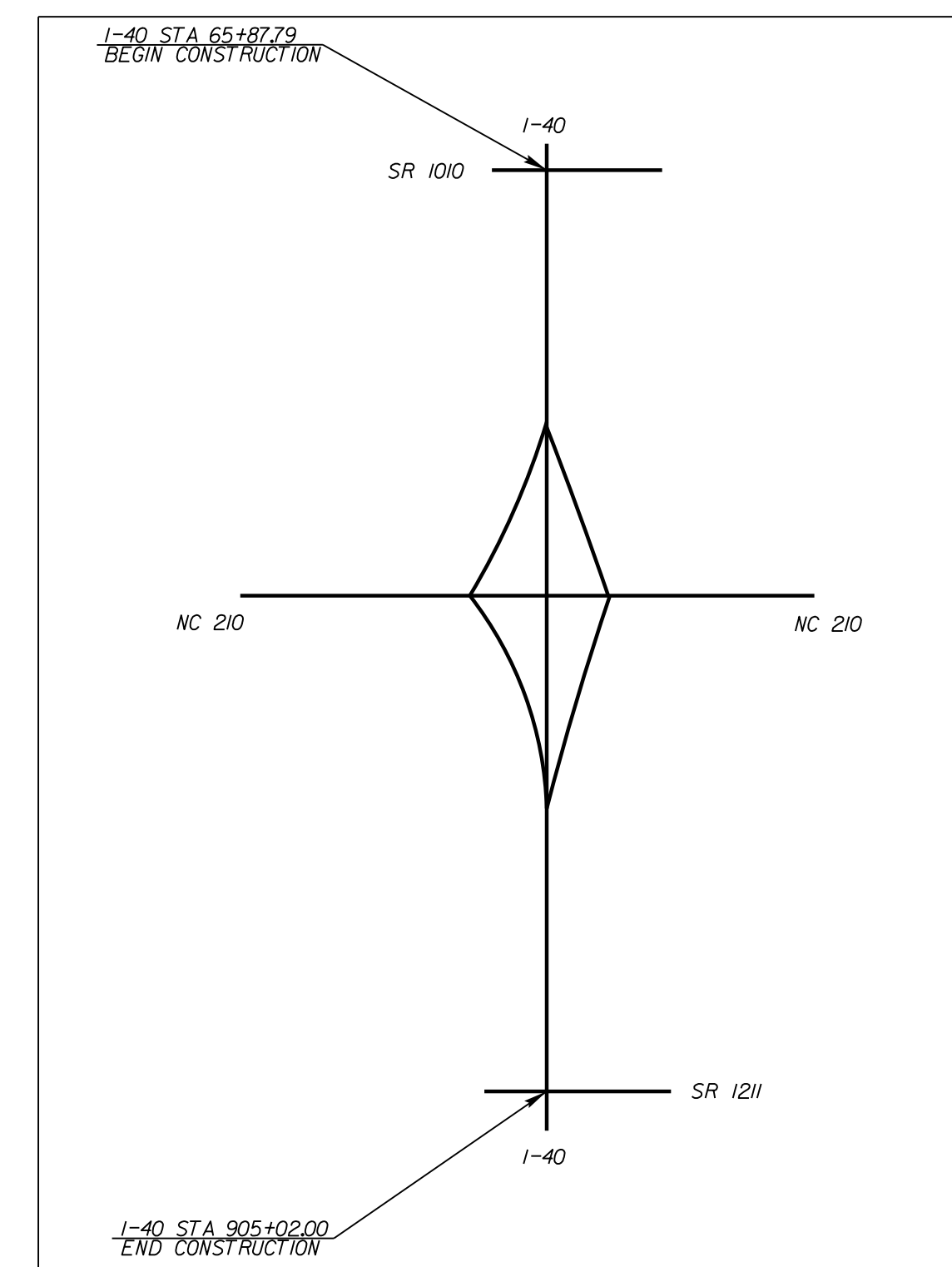
VICINITY MAP



4



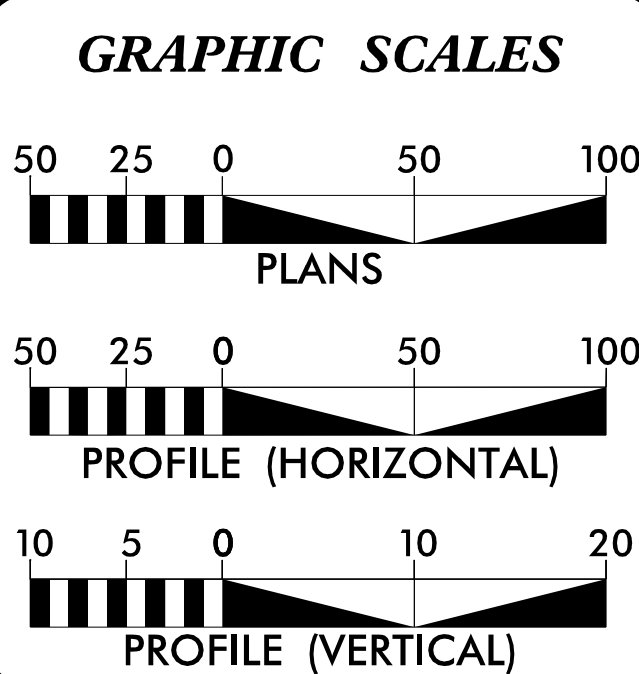
5



NAD 83/NA 2011

THIS IS A CONTROLLED-ACCESS PROJECT WITH ACCESS BEING LIMITED TO INTERCHANGES.

DOCUMENT NOT CONSIDERED FINAL UNLESS ALL SIGNATURES COMPLETED



DESIGN DATA
 ADT 2017 = 50,000

 FUNC CLASS = INTERSTATE

PROJECT LENGTH
 TOTAL LENGTH OF TIP PROJECT I-5781 = 15.893 MILES

Prepared in the Office of:

SEPI
 ENGINEERING & CONSTRUCTION
 1025 Wade Avenue
 Raleigh, NC 27605
 Tel: 919-789-9977
 Fax: 919-789-9591
 License: C-2197

2012 STANDARD SPECIFICATIONS

STEVE SCOTT, PE
 PROJECT ENGINEER

IMAD YOUNIS
 PROJECT DESIGN ENGINEER

MATT CLARKE, PE
 NCDOT CONTACT

RIGHT OF WAY DATE:

LETTING DATE:
 OCTOBER 17, 2017

ROADWAY DESIGN ENGINEER

7/31/2017

DocuSigned by:
 Steven L. Scott
 SIGNATURE

