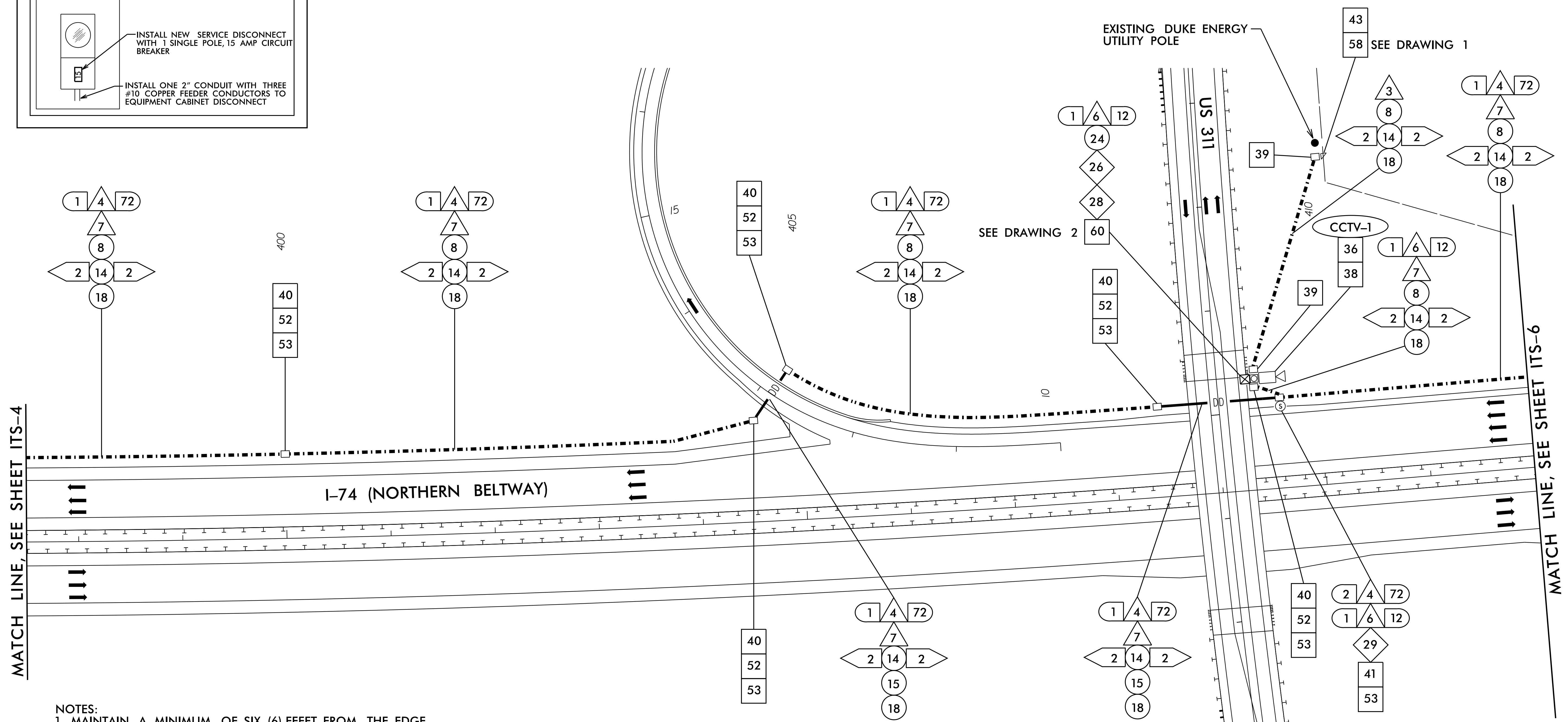
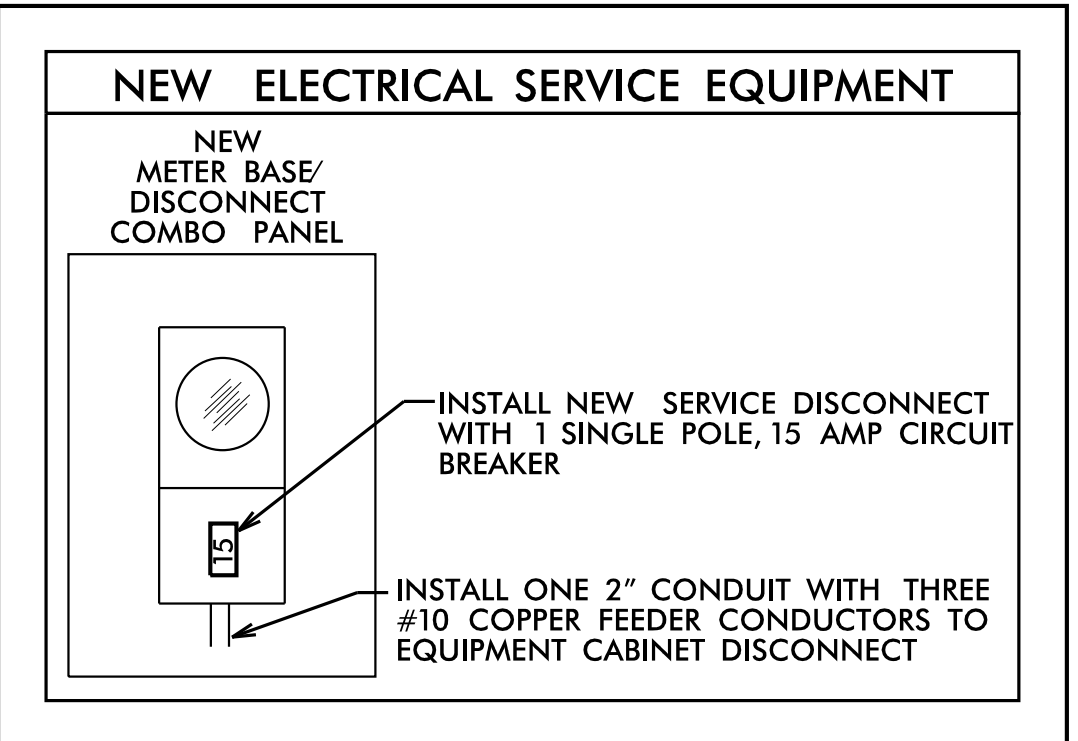
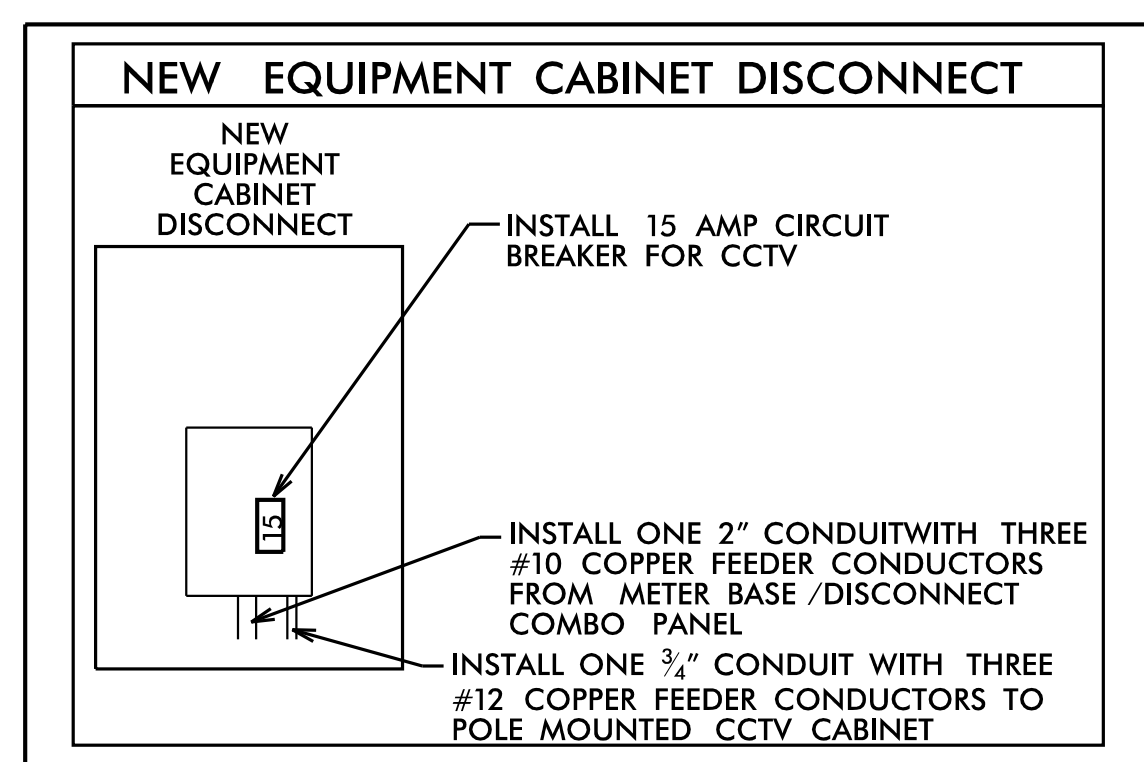


DRAWING 1



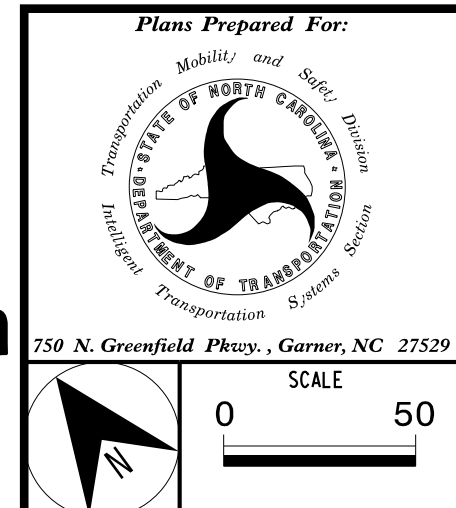
- NOTES:**
1. MAINTAIN A MINIMUM OF SIX (6) FEET FROM THE EDGE OF PAVEMENT WHEN TRENCHING PARALLEL TO THE ROADWAY.
 2. THE FINAL LOCATION OF CCTV MUST BE FIELD VERIFIED BY THE NCDOT REGIONAL ITS ENGINEER PRIOR TO INSTALLATION.
 3. MOUNT CCTV CAMERA 45' ABOVE GRADE.
 4. INSTALL NEW FIELD EQUIPMENT CABINET ON NEW CCTV METAL POLE.
 5. INSTALL NEW GROUNDING SYSTEM AS SHOWN ON ITS-20 AND AS DESCRIBED IN THE PROJECT SPECIAL PROVISIONS.
 6. ELECTRICAL SERVICE DETAILS AND CONSTRUCTION METHODS DEPICT CONDITIONS AT THE TIME OF DESIGN. CONTRACTOR TO VERIFY ACTUAL CONDITIONS AT THE TIME OF CONSTRUCTION AND OBTAIN APPROVAL FROM THE ENGINEER PRIOR TO MAKING ANY CHANGES.
 7. INSTALL 6" x 6" WOOD PEDESTAL 10' FROM EXISTING DUKE ENERGY POWER POLE.
 8. COORDINATE WITH THE REGIONAL ITS ENGINEER TO CONTACT DUKE ENERGY REPRESENTATIVE IN ORDER TO OBTAIN POWER TO NEW ELECTRICAL SERVICE.

DRAWING 2



5/1/2017 K:\ARL\TPTD\ITS\01036384 - U-2579C ITS\Plans\U2579c_ITS_psh5.dgn

Kimley Horn
 NC License #F-0102
 421 Fayetteville St., Suite 600
 Raleigh, NC 27636
 Tel: (919) 677-2000
 Fax: (919) 677-2050



Plans Prepared For: WINSTON-SALEN NORTHERN BELTWAY ITS DEVICE AND COMMUNICATIONS COMMUNICATIONS CABLE AND CONDUIT ROUTING PLAN	
DIVISION 09	FORSYTH COUNTY
PLAN DATE: MAY 2017	REVIEWED BY: I. VAN OSDELL
PREPARED BY: J. CROSS	REVIEWED BY: K. SMITH
REVISIONS	INIT. DATE

SEAL

WINSTON-SALEN NORTHERN BELTWAY ITS DEVICE AND COMMUNICATIONS COMMUNICATIONS CABLE AND CONDUIT ROUTING PLAN

SEAL 030472

KEVIN W. SMITH
 ENGINEER

5/3/2017

SIGNATURE DATE

CADD Filename: