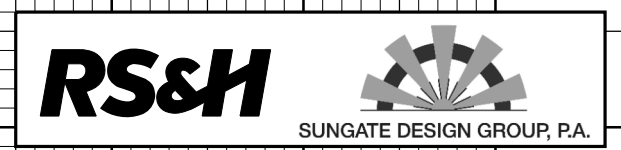


-Y1-

PROJECT REFERENCE NO. U-2579C	SHEET NO. 23
ROADWAY DESIGN ENGINEER	HYDRAULICS ENGINEER

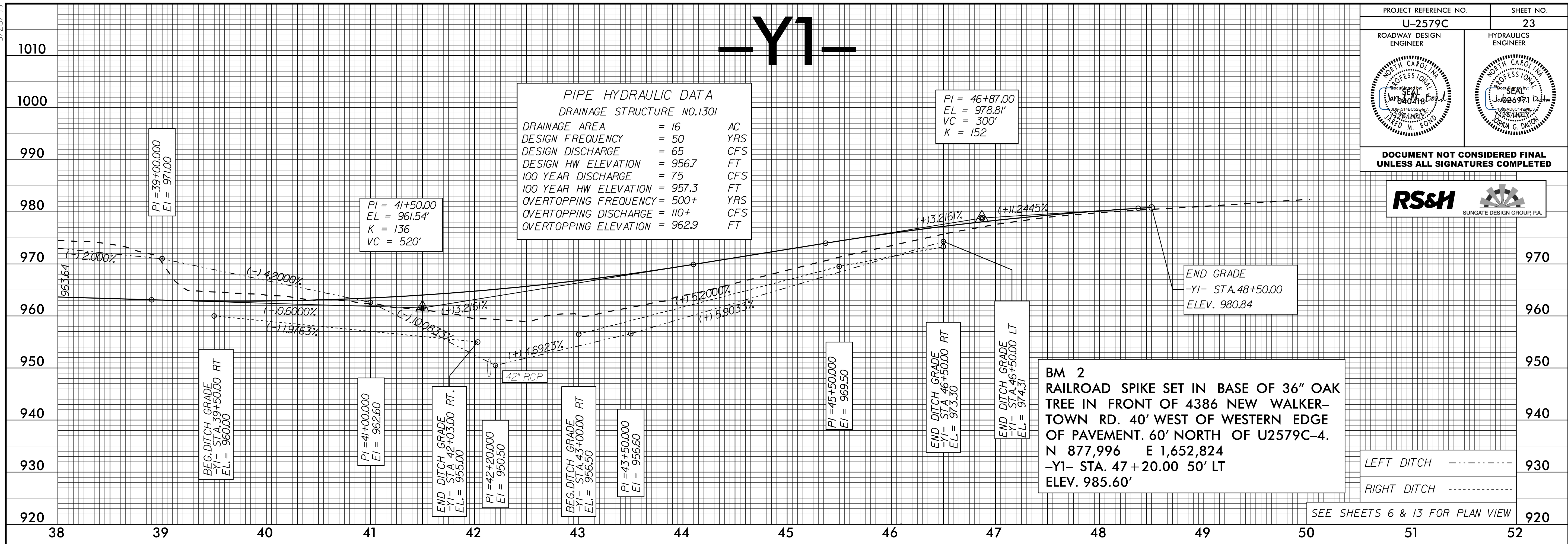
**DOCUMENT NOT CONSIDERED FINAL
UNLESS ALL SIGNATURES COMPLETED**



PIPE HYDRAULIC DATA
DRAINAGE STRUCTURE NO.1301

DRAINAGE AREA	= 16	AC
DESIGN FREQUENCY	= 50	YRS
DESIGN DISCHARGE	= 65	CFS
DESIGN HW ELEVATION	= 956.7	FT
100 YEAR DISCHARGE	= 75	CFS
100 YEAR HW ELEVATION	= 957.3	FT
OVERTOPPING FREQUENCY	= 500+	YRS
OVERTOPPING DISCHARGE	= 110+	CFS
OVERTOPPING ELEVATION	= 962.9	FT

PI = 46+87.00
EL = 978.81'
VC = 300'
K = 152



BM 2
RAILROAD SPIKE SET IN BASE OF 36" OAK TREE IN FRONT OF 4386 NEW WALKER-TOWN RD. 40' WEST OF WESTERN EDGE OF PAVEMENT. 60' NORTH OF U2579C-4.
N 877,996 E 1,652,824
-Y1- STA. 47+20.00 50' LT
ELEV. 985.60'

LEFT DITCH -----
RIGHT DITCH -----

SEE SHEETS 6 & 13 FOR PLAN VIEW