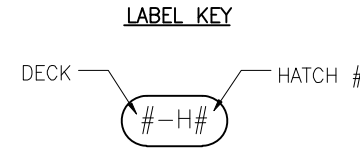


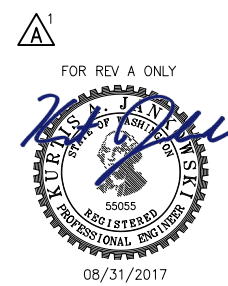
CONFIDENTIAL AND PROPRIETARY PROPERTY OF
EBDG - NC, PLLC
 MAY NOT BE USED FOR CONSTRUCTION OR PROVIDED TO
 ANY THIRD PARTIES WITHOUT PRIOR WRITTEN CONSENT.
 © 2017 ELLIOTT BAY DESIGN GROUP.

| HATCH LIST | | | | | | |
|------------|------|---------------------------|------------|---------|---------|--|
| NO. | DECK | SPACE | FR-END/P-S | SIZE | COAMING | REMARKS |
| 1-H1 | HOLD | POTABLE WATER TANK (P) | 22-B/P | 15 x 23 | 2.5 | RAISED, BOLTED, WATER TIGHT |
| 1-H2 | HOLD | FUEL OIL TANK (A) | 18-A/P | 15 x 23 | 2.5 | RAISED, BOLTED, OIL TIGHT |
| 1-H3 | HOLD | FUEL OIL TANK (B) | 18-B/P | 15 x 23 | 2.5 | RAISED, BOLTED, OIL TIGHT |
| 2-H1 | MAIN | BOW VOID | 40-A/S | 15 x 23 | 0 | FLUSH, HINGED, WATER TIGHT, BOLTED |
| 2-H2 | MAIN | VOITH UNIT ACCESS | 37-A/C | 88 x 88 | 0 | EQUIPMENT REMOVAL CAR DECK PLATE, FLUSH, SCREWED, WATER TIGHT |
| 2-H3 | MAIN | BALLAST TANK (P) | 29-A/P | 15 x 23 | 0 | FLUSH, HINGED, WATER TIGHT, BOLTED |
| 2-H4 | MAIN | BALLAST TANK (S) | 29-A/S | 15 x 23 | 0 | FLUSH, HINGED, WATER TIGHT, BOLTED |
| 2-H5 | MAIN | THRUSTER ROOM "A" ESCAPE | 32-A/S | 22 DIA | 0 | FLUSH, HINGED, WATER TIGHT, QUICK ACTING, SPRING ASSIST |
| 2-H6 | MAIN | MAIN ENGINE ACCESS | 6-A/C | 64 x 88 | 0 | EQUIPMENT REMOVAL CAR DECK PLATE, A-80, FLUSH, SCREWED, WATER TIGHT, REF 3 |
| 2-H7 | MAIN | EXHAUST ACCESS | 0/S | 72 x 84 | 0 | STUD, X2 HANDLE, EQUIPMENT REMOVAL PLATE, WATER TIGHT |
| 2-H8 | MAIN | ENG. RM. MACHINERY ACCESS | 2-B/P | 52 x 88 | 0 | EQUIPMENT REMOVAL CAR DECK PLATE, A-80, FLUSH, SCREWED, WATER TIGHT, REF 3 |
| 2-H9 | MAIN | MAIN ENGINE ACCESS | 6-B/C | 64 x 88 | 0 | EQUIPMENT REMOVAL CAR DECK PLATE, A-80, FLUSH, SCREWED, WATER TIGHT, REF 3 |
| 2-H10 | MAIN | VOID "B" MACHINERY ACCESS | 22-B/S | 40 x 40 | 0 | EQUIPMENT REMOVAL CAR DECK PLATE, FLUSH, SCREWED, WATER TIGHT, REF 3 |
| 2-H11 | MAIN | BALLAST TANK (P) | 29-B/P | 15 x 23 | 0 | FLUSH, HINGED, WATER TIGHT, BOLTED |
| 2-H12 | MAIN | BALLAST TANK (S) | 29-B/S | 15 x 23 | 0 | FLUSH, HINGED, WATER TIGHT, BOLTED |
| 2-H13 | MAIN | THRUSTER ROOM "B" ESCAPE | 32-B/S | 22 DIA | 0 | FLUSH, HINGED, WATER TIGHT, QUICK ACTING, SPRING ASSIST |
| 2-H14 | MAIN | VOITH UNIT ACCESS | 37-B/C | 88 x 88 | 0 | EQUIPMENT REMOVAL CAR DECK PLATE, FLUSH, SCREWED, WATER TIGHT, REF 3 |
| 2-H15 | MAIN | BOW VOID | 40-B/S | 15 x 23 | 0 | FLUSH, HINGED, WATER TIGHT |
| 2-H16 | MAIN | VOID "A" MACHINERY ACCESS | 22-A/P | 40 x 40 | 0 | EQUIPMENT REMOVAL CAR DECK PLATE, FLUSH, SCREWED, WATER TIGHT, REF 3 |
| 2-H17 | MAIN | ANCHOR CHAIN STORAGE | 34A-S | 15 x 23 | 0 | BOLTED |
| 2-H18 | MAIN | VOID "B" ESCAPE | 21-B/S | 22 DIA | 0 | FLUSH, HINGED, WATER TIGHT, QUICK ACTING, SPRING ASSIST |

A¹



STAMP
 PROFESSIONAL ENGINEER
 STAMP PER:
 REV: -
 ENGR: PATRICK D. FAAS
 DATED: 07/27/2017
 STATE: WA
 REG NO: 49313



| REVISION HISTORY | | | | | |
|------------------|--------------|---|-----|----------|------|
| REV | ZONE | DESCRIPTION | DWN | DATE | APVD |
| A | 1-6C 2-4C | 1. UPDATED PE STAMP FOR REV A. 2. ADDED HATCH AT FR 21 B END STBD. | DKG | 08/31/17 | KAJ |

GENERAL NOTES

- VESSEL TO BE CONSTRUCTED IN ACCORDANCE WITH 46 CFR SUBCHAPTER H REGULATIONS.
- FRAME SPACING IS 24" UNLESS NOTED OTHERWISE.
- ALL HATCHES ARE TO BE GASKETED, WATERTIGHT. FLUSH HATCHES ON CAR DECK ARE TO USE ADDITIONAL SEALING COMPOUND TO ENSURE WATERTIGHT FIT.
- SEE REF 3 FOR B.E.R.P. HATCH STRUCTURE.
- ESCAPE HATCHES SHALL BE PAINTED IN A BRIGHT COLOR CONTRASTING THE DECK.

VESSEL PARTICULARS

| | |
|-------------------------------|----------|
| LENGTH OVERALL: | 183'-7" |
| LENGTH DESIGN LOAD WATERLINE: | 180'-6" |
| BEAM, MOLDED: | 46'-0" |
| BEAM OVER GUARDS: | 46'-10" |
| DEPTH AT SIDE: | 10'-6" |
| DRAFT AT DLWL: | 4'-6" |
| FREEBOARD AT SIDE: | 6'-0" |
| TOTAL PASSENGER CAPACITY: | 300 MAX. |
| VEHICLE CAPACITY: | 40 SV |

REFERENCES

- 16101-200-832-1 TECHNICAL SPECIFICATION
- 16101-200-101-0 PROFILES AND DECK ARRANGEMENTS
- 16101-200-130-2 MAIN DECK



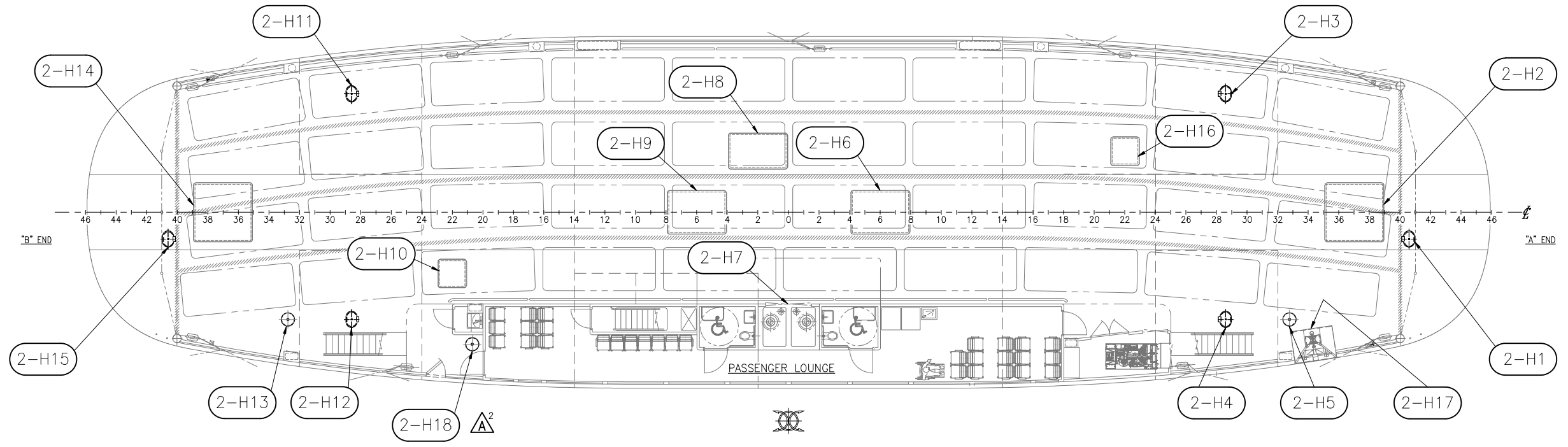
Elliott Bay Design Group
 North Carolina, PLLC

CLIENT: NORTH CAROLINA D.O.T.
 RALEIGH, NORTH CAROLINA

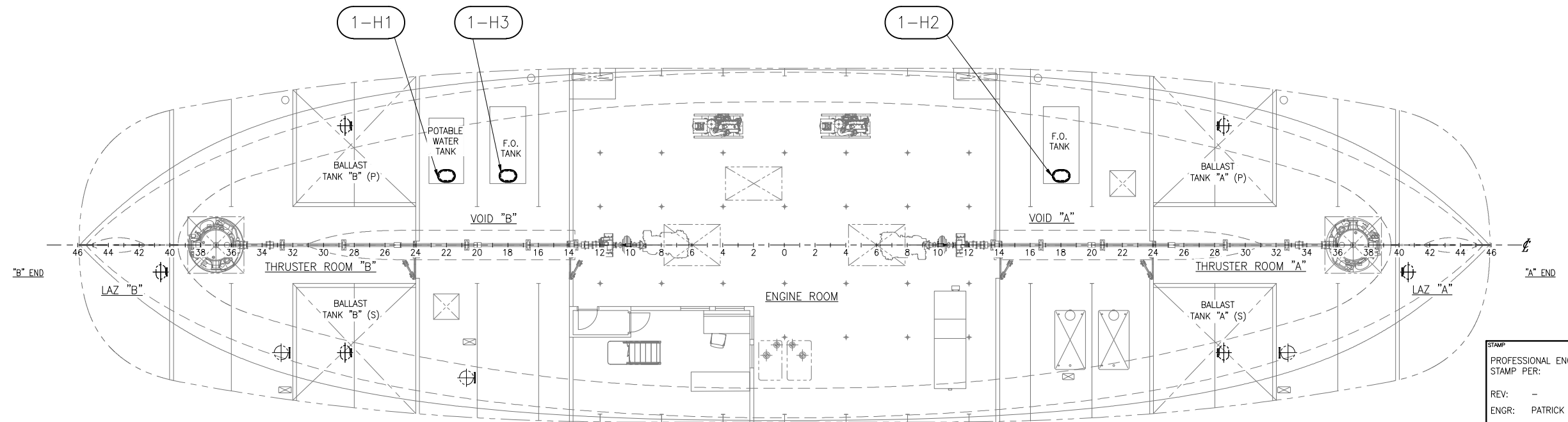
PROJECT: NEW RIVER CLASS FERRY

HATCH SCHEDULE

| | | | | | |
|-------|------|-----------|------------------|-------|--------|
| SIZE | D | DWG NO. | 16101-200-624-3 | REV | A |
| SCALE | NONE | FILE NAME | 16101-200-624-3A | SHEET | 1 OF 2 |
| DWN | JEH | MOD | MWR | CKD | PDF |
| APVD | KAJ | APVD DATE | 7/27/2017 | | |



MAIN DECK PLAN



HOLD PLAN

STAMP
 PROFESSIONAL ENGINEER
 STAMP PER:
 REV: -
 ENGR: PATRICK D. FAAS
 DATED: 07/27/2017
 STATE: WA
 REG NO: 49313

