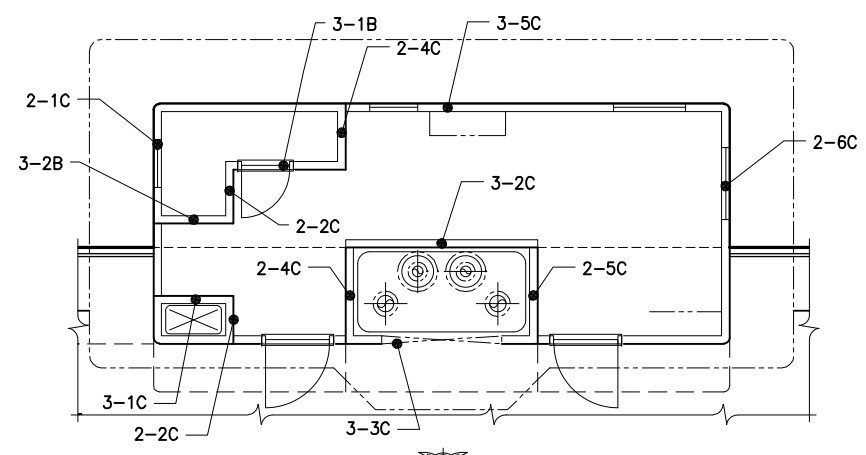
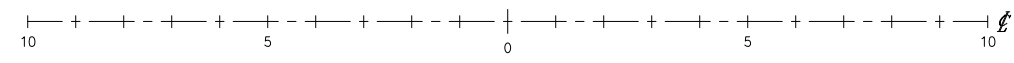
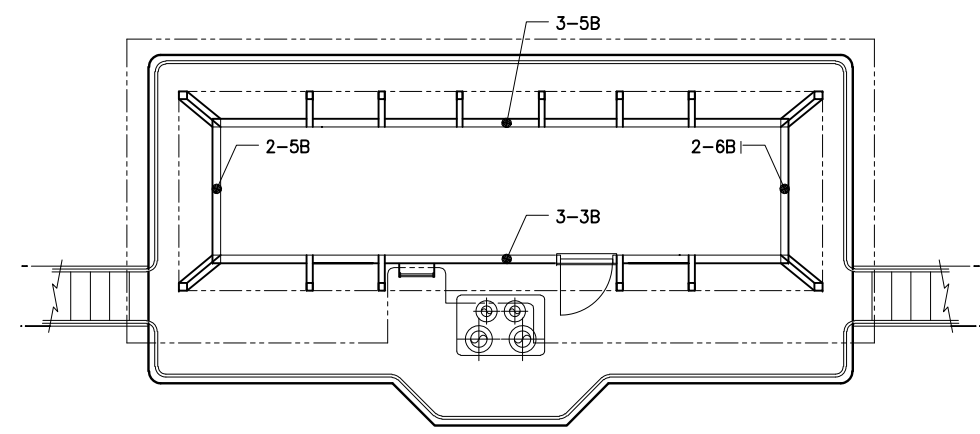
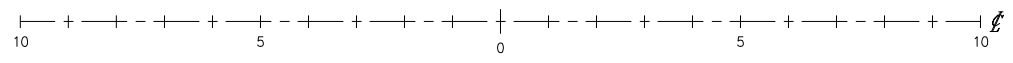


CONFIDENTIAL AND PROPRIETARY PROPERTY OF
EBDG - NC, PLLC
 MAY NOT BE USED FOR CONSTRUCTION OR PROVIDED TO
 ANY THIRD PARTIES WITHOUT PRIOR WRITTEN CONSENT.
 © 2017 ELLIOTT BAY DESIGN GROUP.

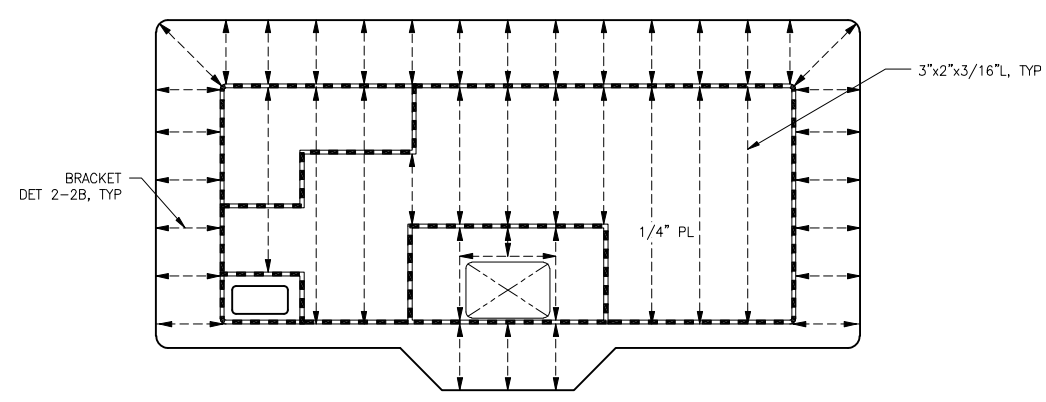
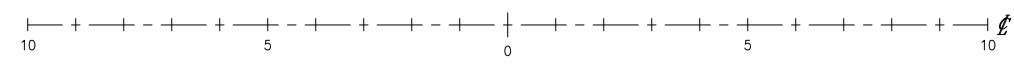
REVISION HISTORY					
REV	ZONE	DESCRIPTION	DWN	DATE	APVD
A	1-3B	1. ADDED INSERT PLATE FOR LIGHT MAST ON PILOT HOUSE TOP	WHL	7/28/17	PDF



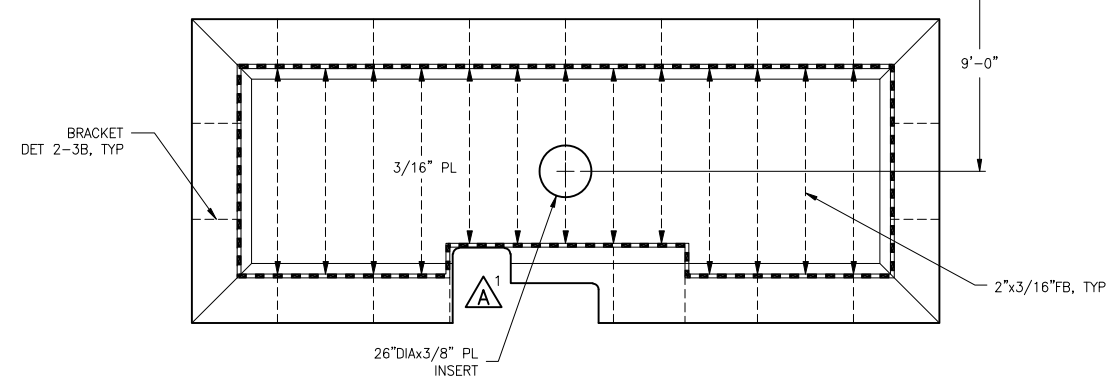
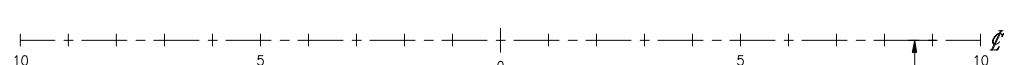
KEY PLAN 1-5C
01 DECK BULKHEADS



KEY PLAN 1-3C
PILOT HOUSE BULKHEADS



PLAN 1-5A
BRIDGE DECK



PLAN 1-3A
PILOT HOUSE TOP

KEY

	BULKHEAD FAR SIDE
	BULKHEAD NEAR SIDE
	GIRDER FAR SIDE
	GIRDER NEAR SIDE
	ORDINARY STIFFENER FAR SIDE
	ORDINARY STIFFENER NEAR SIDE

GENERAL NOTES

1. VESSEL TO BE CONSTRUCTED IN ACCORDANCE WITH 46 CFR SUBCHAPTER H REGULATIONS.
2. FRAME SPACING IS 24".
3. TRANSVERSE BULKHEAD STIFFENER SPACING = 24" U.N.O.
4. CONTRACTOR SHALL VERIFY STRUCTURE FOR ALL FOUNDATIONS PRIOR TO CONSTRUCTION. SEE REF 7.

REFERENCES

1. 16101-200-061-1 SCANTLING CALCULATIONS
2. 16101-200-101-0 PROFILES AND DECK ARRANGEMENTS
3. 16101-200-120-1 MIDSHIP SECTION
4. 16101-200-130-2 MAIN DECK
5. 16101-200-150-1 SUPERSTRUCTURE MAIN DECK TO 01 DECK
6. 16101-200-150-3 MAIN DECK BULKWARKS
7. 16101-200-832-1 TECHNICAL SPECIFICATION



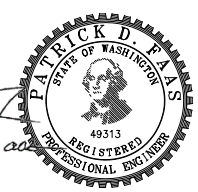
Elliott Bay Design Group
North Carolina, PLLC

CLIENT: NORTH CAROLINA D.O.T.
RALEIGH, NORTH CAROLINA

PROJECT: NEW RIVER CLASS FERRY

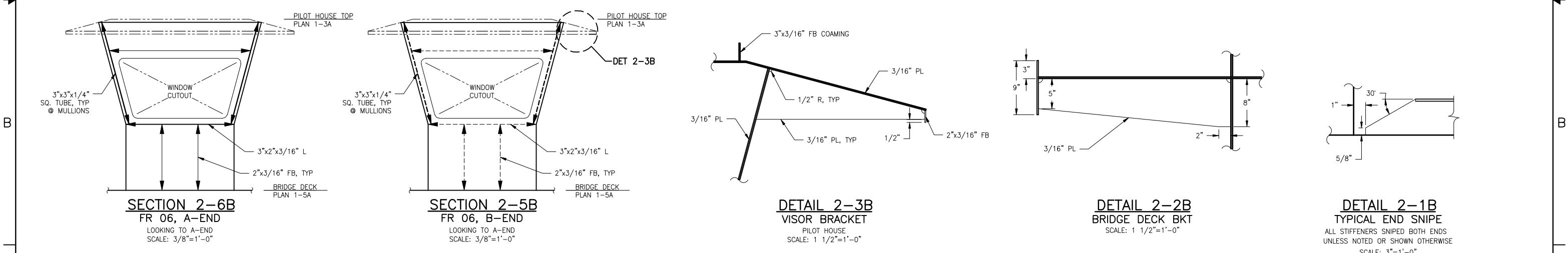
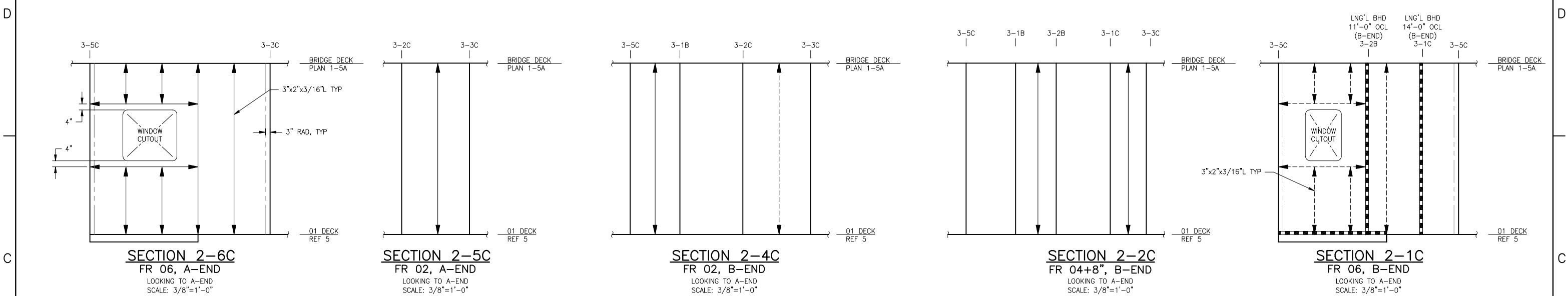
SUPERSTRUCTURE
01 DECK TO PILOT HOUSE TOP

SIZE	D	DWG NO.	16101-200-150-2	REV	A
SCALE	1/4"=1'-0"	FILE NAME	16101-200-150-2A	SHEET	1 OF 3
DWN	JPC	MOD	DKG	CRD	PDF
APVD	PDF	APVD DATE	7/27/2017		



Patrick J. Adams

6 5 4 3 2 1

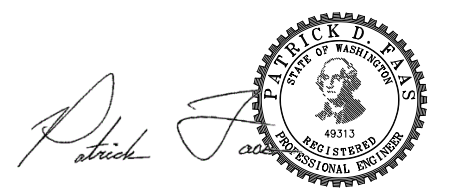


KEY

	BULKHEAD FAR SIDE
	BULKHEAD NEAR SIDE
	GIRDER FAR SIDE
	GIRDER NEAR SIDE
	ORDINARY STIFFENER FAR SIDE
	ORDINARY STIFFENER NEAR SIDE

NOTE:
 01 DECK BULKHEADS 1/4" PLATE UNO.
 PILOT HOUSE BULKHEADS 3/16" PLATE UNO.
 STIFFENERS 3"x2"x3/16" L THROUGHOUT UNO.
 SNIPE ENDS PER DETAIL 2-1B

NOTE:
 LONGITUDINAL BULKHEAD STIFFENER SPACING = 24" U.N.O.



6 5 4 3 2 1

6

5

4

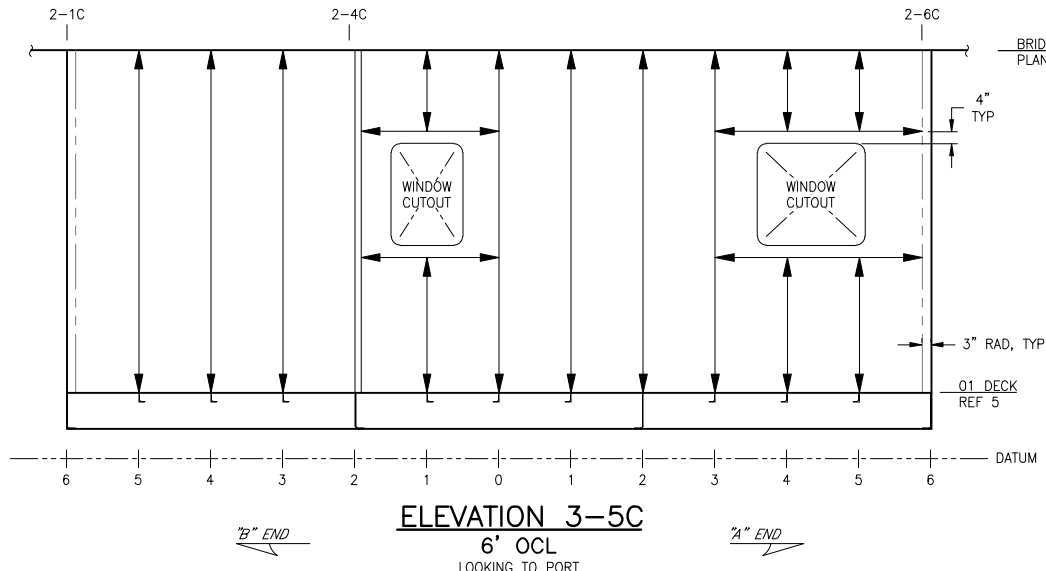
3

2

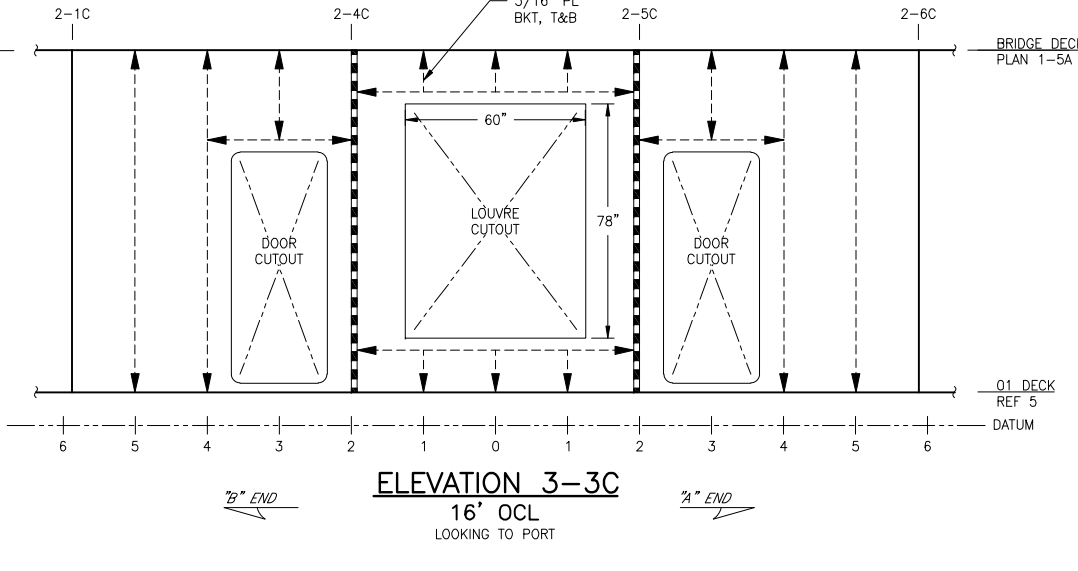
1

D

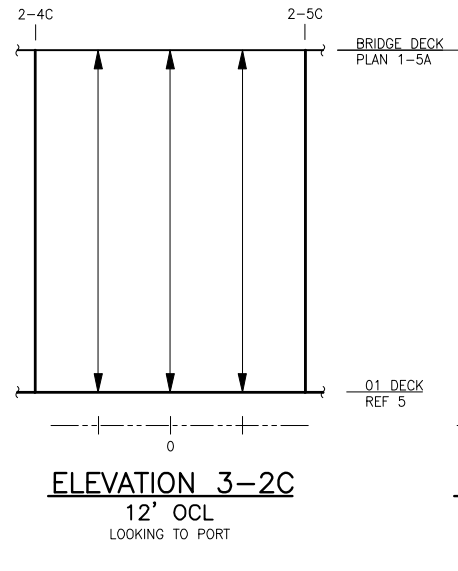
D



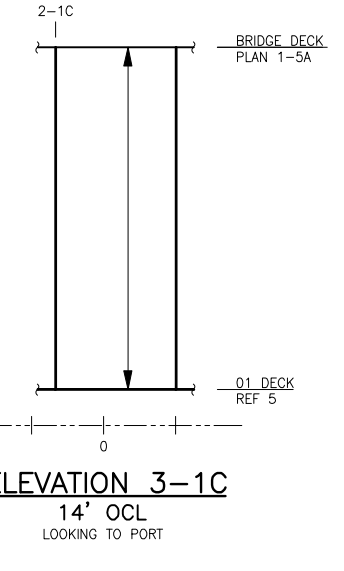
ELEVATION 3-5C
 6' OCL
 LOOKING TO PORT



ELEVATION 3-3C
 16' OCL
 LOOKING TO PORT



ELEVATION 3-2C
 12' OCL
 LOOKING TO PORT



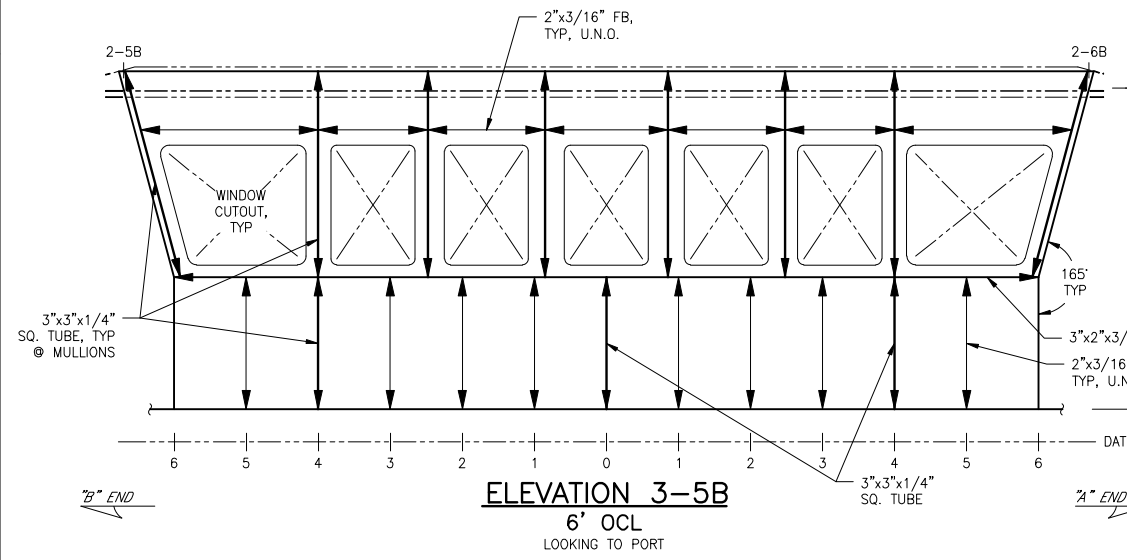
ELEVATION 3-1C
 14' OCL
 LOOKING TO PORT

C

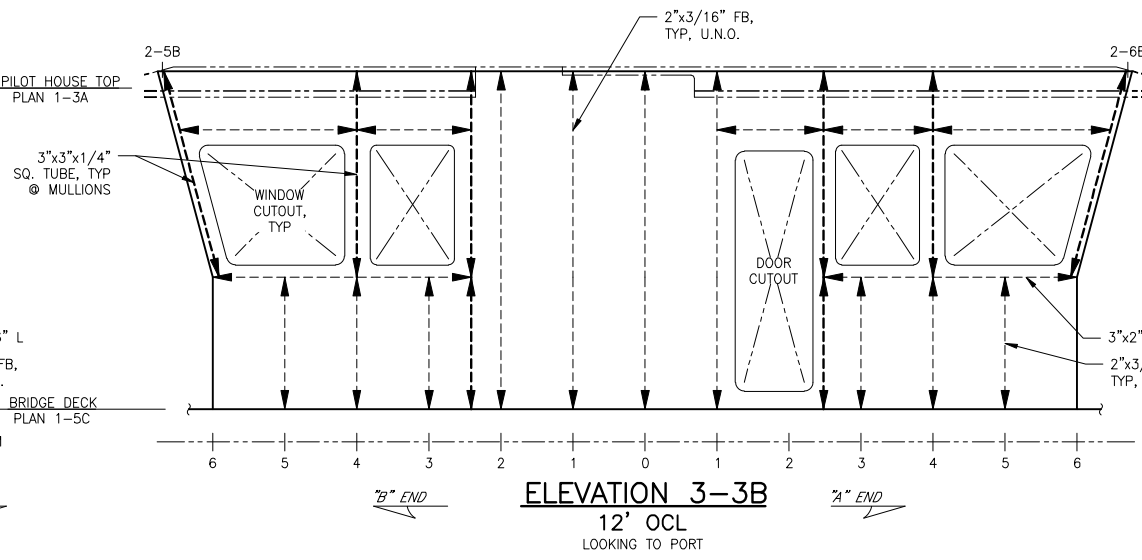
C

B

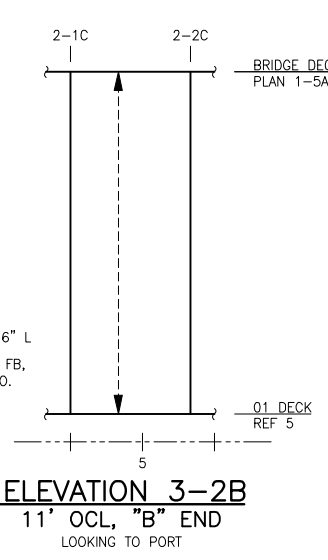
B



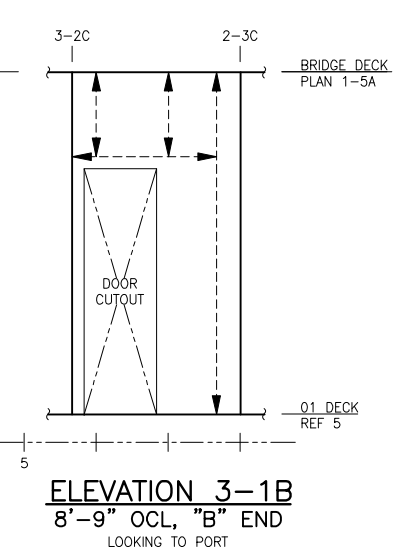
ELEVATION 3-5B
 6' OCL
 LOOKING TO PORT



ELEVATION 3-3B
 12' OCL
 LOOKING TO PORT



ELEVATION 3-2B
 11' OCL, "B" END
 LOOKING TO PORT



ELEVATION 3-1B
 8'-9" OCL, "B" END
 LOOKING TO PORT

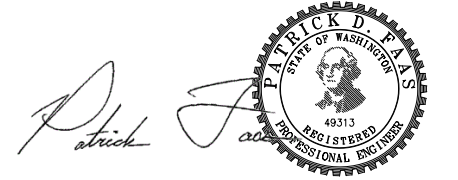
A

A

- KEY**
- BULKHEAD FAR SIDE
 - BULKHEAD NEAR SIDE
 - GIRDER FAR SIDE
 - GIRDER NEAR SIDE
 - ORDINARY STIFFENER FAR SIDE
 - ORDINARY STIFFENER NEAR SIDE

NOTE:
 BRIDGE DECK BULKHEADS 1/4" PLATE UNO.
 PILOT HOUSE BULKHEADS 3/16" PLATE UNO.
 STIFFENERS 3"x2"x3/16" L THROUGHOUT UNO.
 SNIPE ENDS PER DETAIL 2-1B

NOTE:
 TRANSVERSE BULKHEAD STIFFENER SPACING = 24" U.N.O.



6

5

4

3

2

1