

CONFIDENTIAL AND PROPRIETARY PROPERTY OF
EBDG - NC, PLLC
 MAY NOT BE USED FOR CONSTRUCTION OR PROVIDED TO
 ANY THIRD PARTIES WITHOUT PRIOR WRITTEN CONSENT.
 © 2017 ELLIOTT BAY DESIGN GROUP.

REVISION HISTORY					
REV	ZONE	DESCRIPTION	DWN	DATE	APVD
A	1-3B	1. UPDATED PE STAMP FOR REV A. 2. UPDATED DESCRIPTION OF BILGE TANGENTS.	DKG	08/31/17	KAJ
	1-2B	3. REMOVED 10" AND 12" WATERLINES FROM BODY PLAN.			
	2-2A	4. ADDED THRUSTER CL AT FR 37 TO SHEAR PLAN.			
	1-5B	5. ADDED TRANSVERSE CHINE LINE TO FLAT			
	2-2C				

GENERAL NOTES

1. VESSEL TO BE CONSTRUCTED IN ACCORDANCE WITH 46 CFR SUBCHAPTER H REGULATIONS.
2. FRAME SPACING IS 24" UNLESS NOTED OTHERWISE.
3. ALL DIMENSIONS ARE MOLDED.
4. HULL IS SYMMETRICAL ABOUT MIDSHIP AND CENTERLINE.

VESSEL PARTICULARS

LENGTH OVERALL:	183'-7"
LENGTH DESIGN LOAD WATERLINE:	180'-6"
BEAM OVER GUARDS:	46'-0"
DEPTH AT SIDE:	10'-6"
DRAFT AT DLWL:	4'-6"
FREEBOARD AT SIDE:	6'-0"
TOTAL PERSONS ON BOARD CAPACITY:	300 MAX.
VEHICLE CAPACITY:	40 SV

REFERENCES

1. 16101-200-832-1 TECHNICAL SPECIFICATION



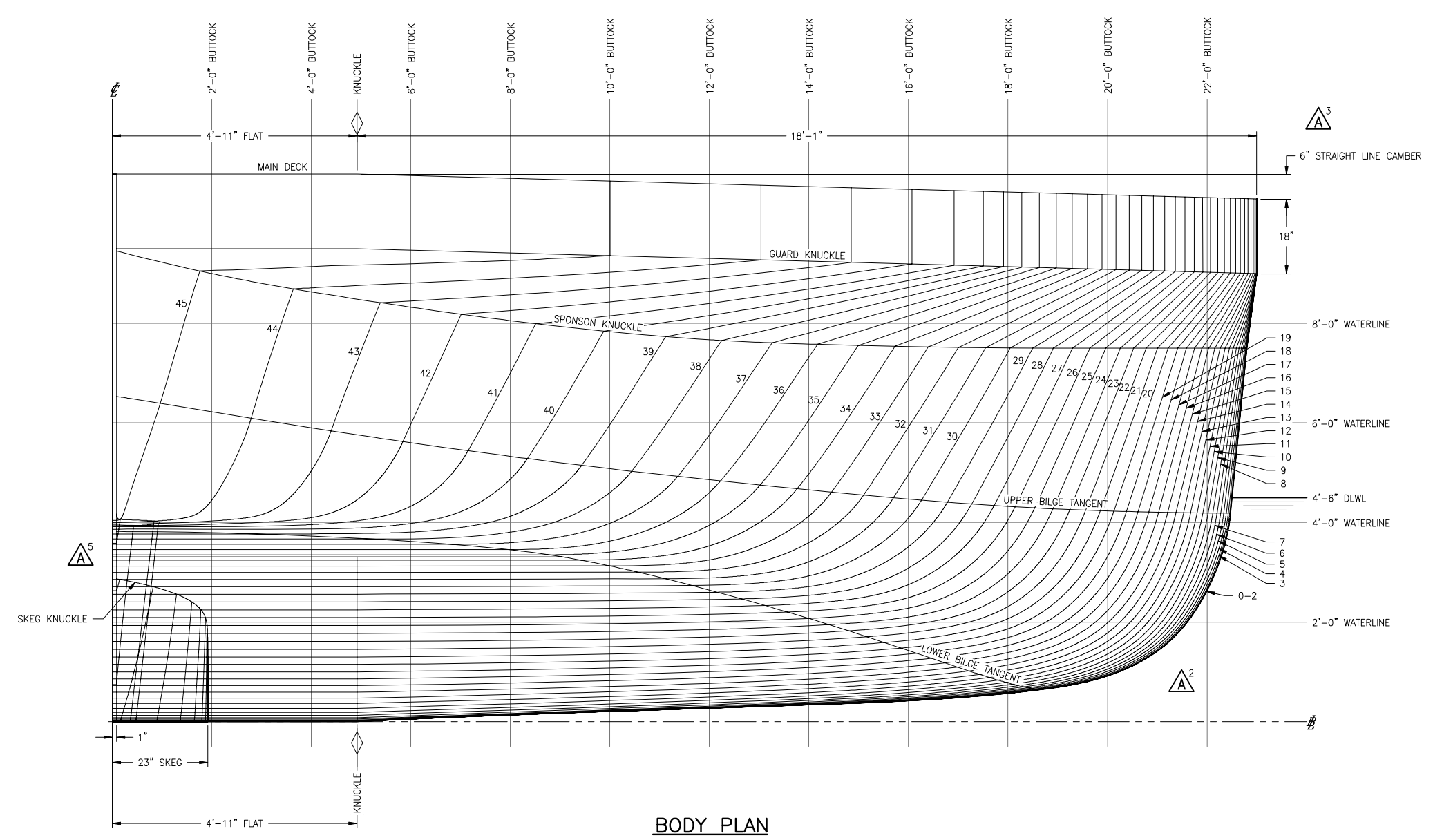
Elliott Bay Design Group
 North Carolina, PLLC

CLIENT: NORTH CAROLINA D.O.T.
 RALEIGH, NORTH CAROLINA

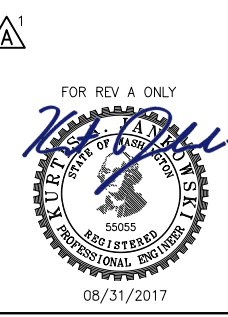
PROJECT: NEW RIVER CLASS FERRY

LINES PLAN

SIZE	D	DWG NO.	16101-200-100-1	REV	A
SCALE	3/4" = 1'-0"	FILE NAME	16101-200-100-1A	SHEET	1 OF 2
DWN	ZDL	MOD	WHL	CKD	M-W
		APVD	KAJ	APVD DATE	07/27/2017



STAMP
 PROFESSIONAL ENGINEER
 STAMP PER:
 REV: -
 ENGR: PATRICK D. FAAS
 DATED: 07/27/2017
 STATE: WA
 REG NO: 49313

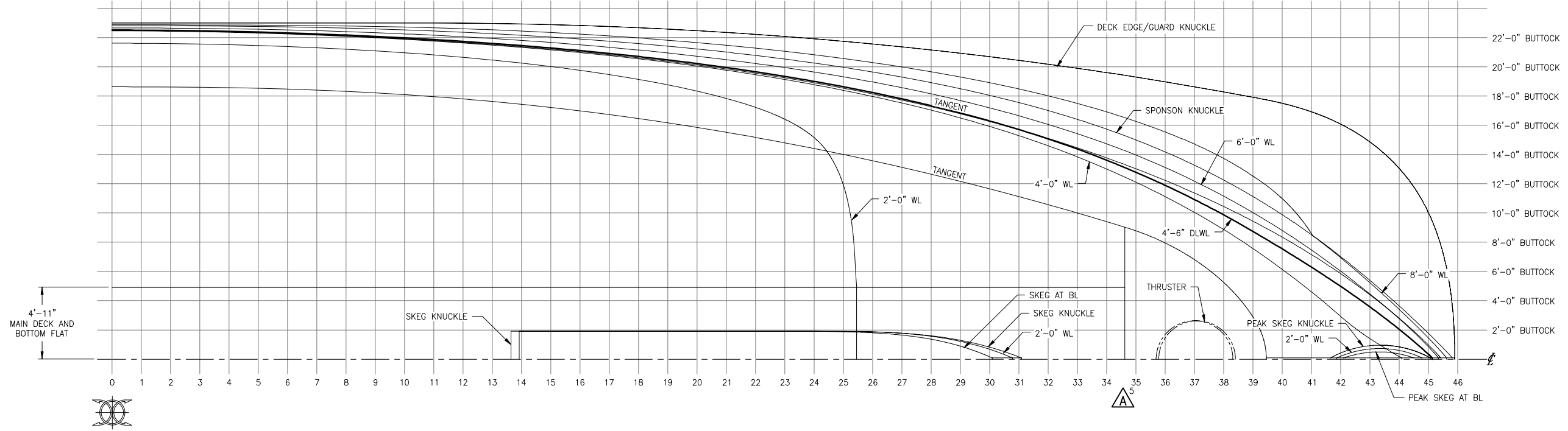


6 | 5 | 4 | 3 | 2 | 1

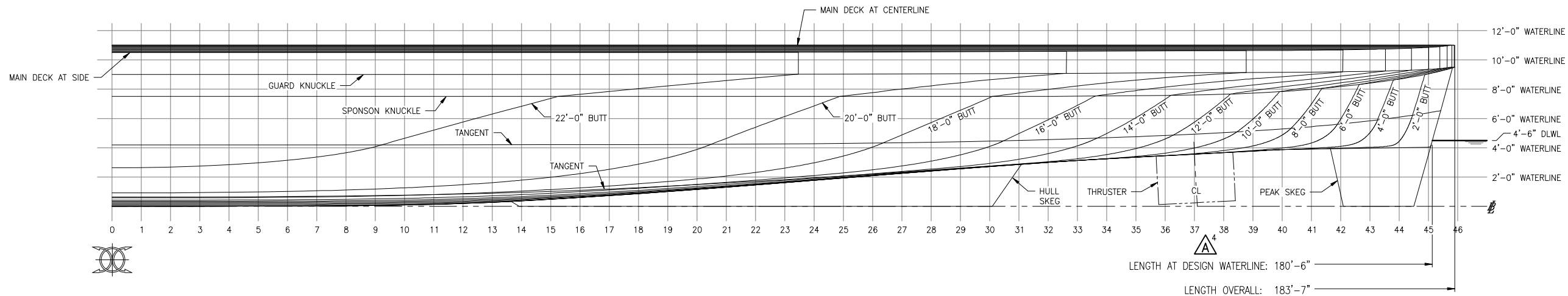
D | C | B | A

6 | 5 | 4 | 3 | 2 | 1

CONFIDENTIAL AND PROPRIETARY PROPERTY OF
EBDG - INC, PLLC
 MAY NOT BE USED FOR CONSTRUCTION OR PROVIDED TO
 ANY THIRD PARTIES WITHOUT PRIOR WRITTEN CONSENT.
 ©2017 ELLIOTT BAY DESIGN GROUP.

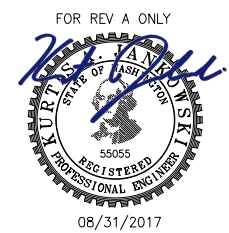


HALF BREADTH PLAN



SHEAR PLAN

STAMP
 PROFESSIONAL ENGINEER
 STAMP PER:
 REV: -
 ENGR: PATRICK D. FAAS
 DATED: 07/27/2017
 STATE: WA
 REG NO: 49313



SIZE	DWG NO.	REV
D	16101-200-100-1	A
SCALE	FILE NAME	SHEET
1/4" = 1'-0"	16101-200-100-1A	2 OF 2