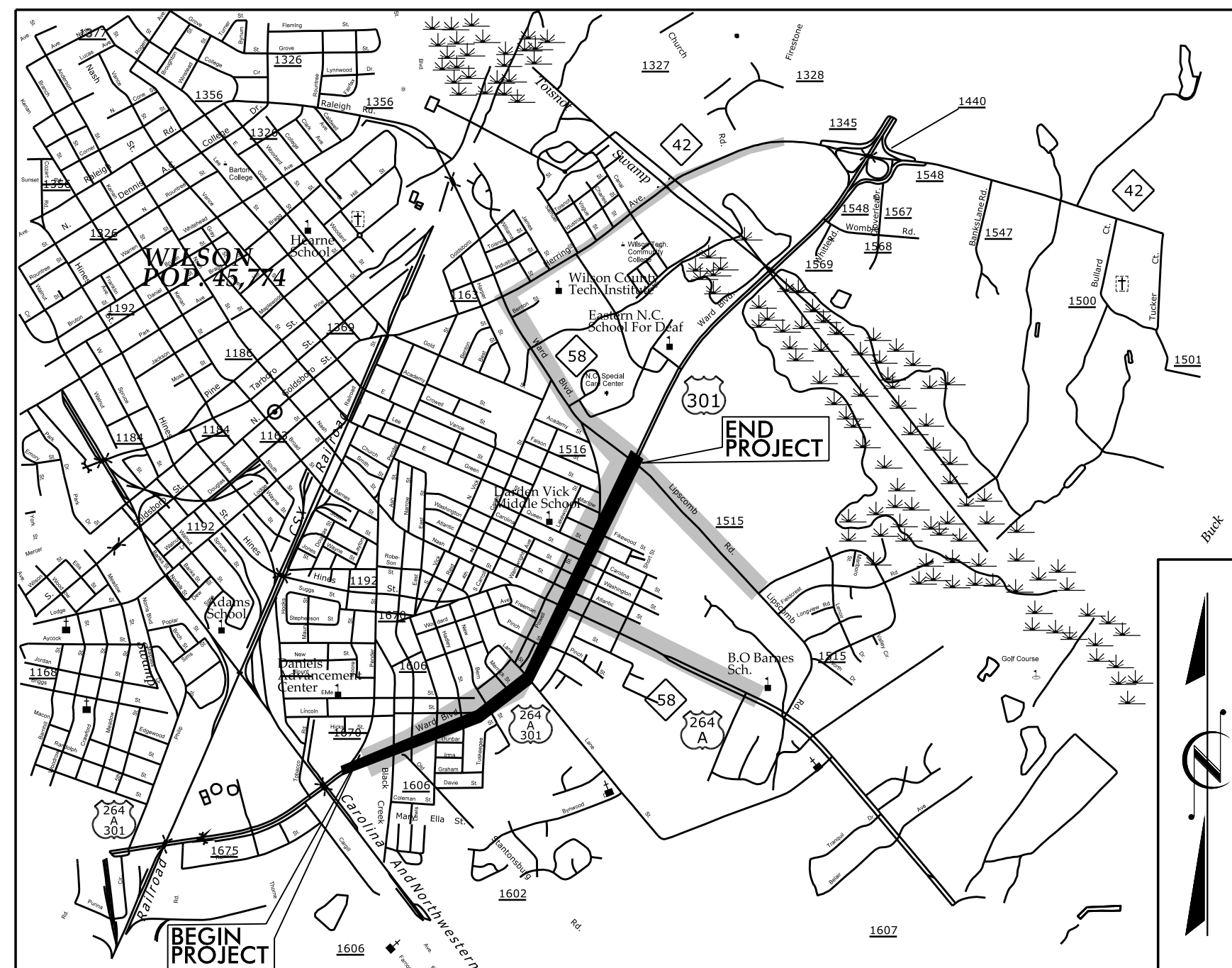


**This electronic collection of documents is provided
for the convenience of the user
and is Not a Certified Document –**

**The documents contained herein were originally issued
and sealed by the individuals whose names and license
numbers appear on each page, on the dates appearing
with their signature on that page.**

**This file or an individual page
shall not be considered a certified document.**

TIP PROJECT: U-5935



VICINITY MAP

STATE OF NORTH CAROLINA
DIVISION OF HIGHWAYS

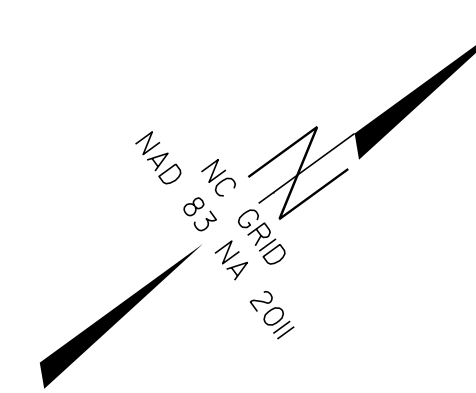
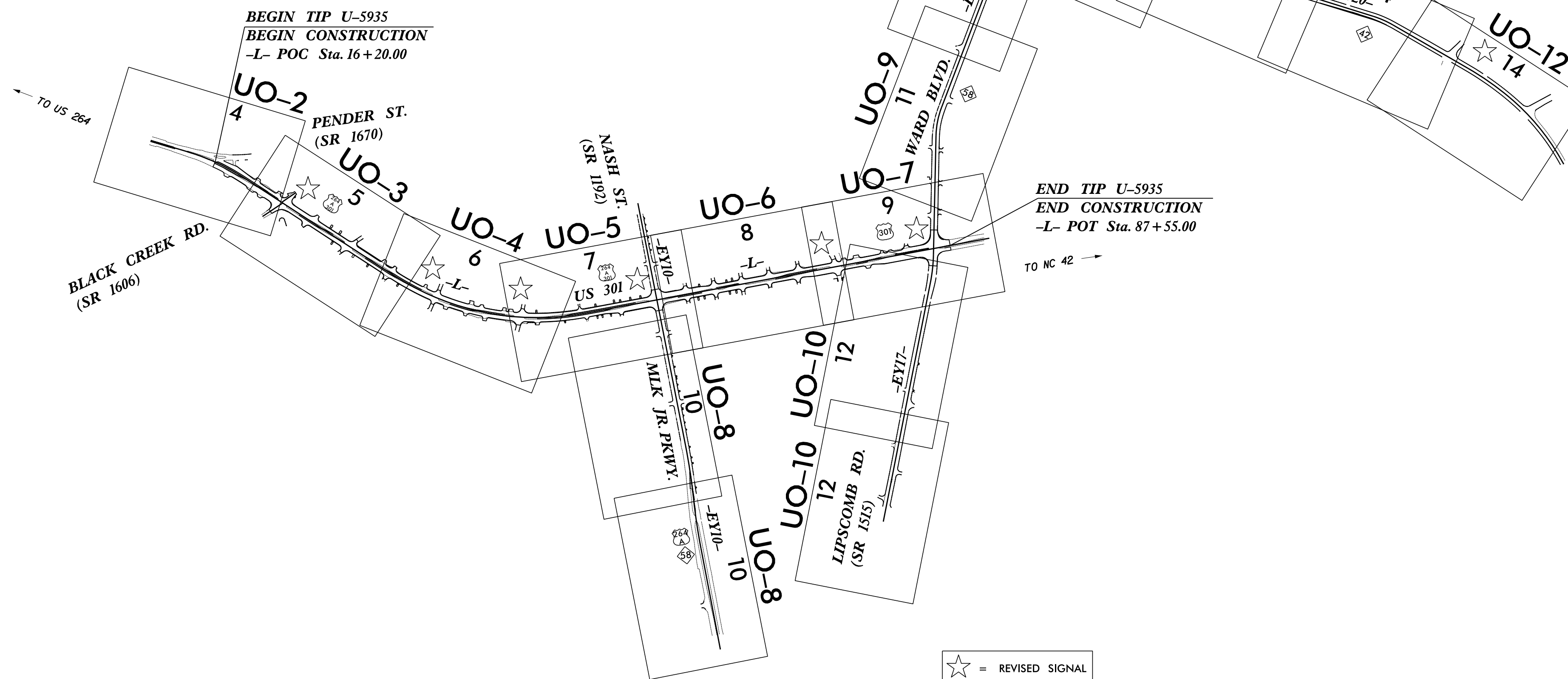
UTILITY BY OTHERS PLANS
WILSON COUNTY

LOCATION: US 301 FROM BLACK CREEK ROAD (SR 1606) TO
LIPSCOMB ROAD (SR 1515)

TYPE OF WORK: UTILITY RELOCATION

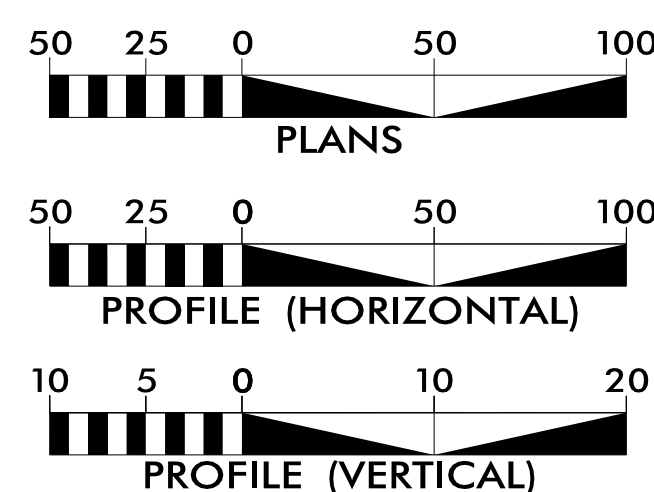
T.I.P. NO.	SHEET NO.
U-5935	UO-1

NOTE:
ALL UTILITY WORK SHOWN ON THIS SHEET IS DONE BY OTHERS.
NO PAYMENT WILL BE MADE TO THE CONTRACTOR FOR UTILITY WORK SHOWN ON THIS SHEET.



PRELIMINARY PLANS
DO NOT USE FOR CONSTRUCTION

GRAPHIC SCALES



INDEX OF SHEETS

SHEET NO.:	DESCRIPTION:
UO-1	TITLE SHEET
UO-2 THRU UO-12	UBO PLAN SHEETS

UTILITY OWNERS WITH CONFLICTS

- (A) POWER DISTRIBUTION - CITY OF WILSON
- (B) COMMUNICATIONS - CITY OF WILSON
- (C) COMMUNICATIONS - CENTURYLINK
- (D) COMMUNICATIONS - MCNC
- (E) COMMUNICATIONS - TIME WARNER CABLE
- (F) GAS DISTRIBUTION - CITY OF WILSON
- (G) GAS DISTRIBUTION - PIEDMONT NATURAL GAS

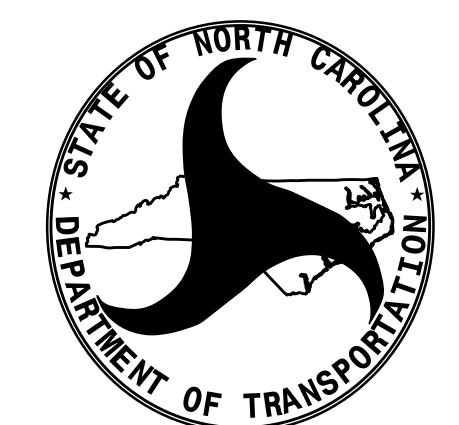
PREPARED IN THE OFFICE OF:

Michael Baker

INTERNATIONAL

Michael Baker Engineering, Inc.
8000 Regency Parkway, Suite 600
Cary, NC 27518
919-463-5488

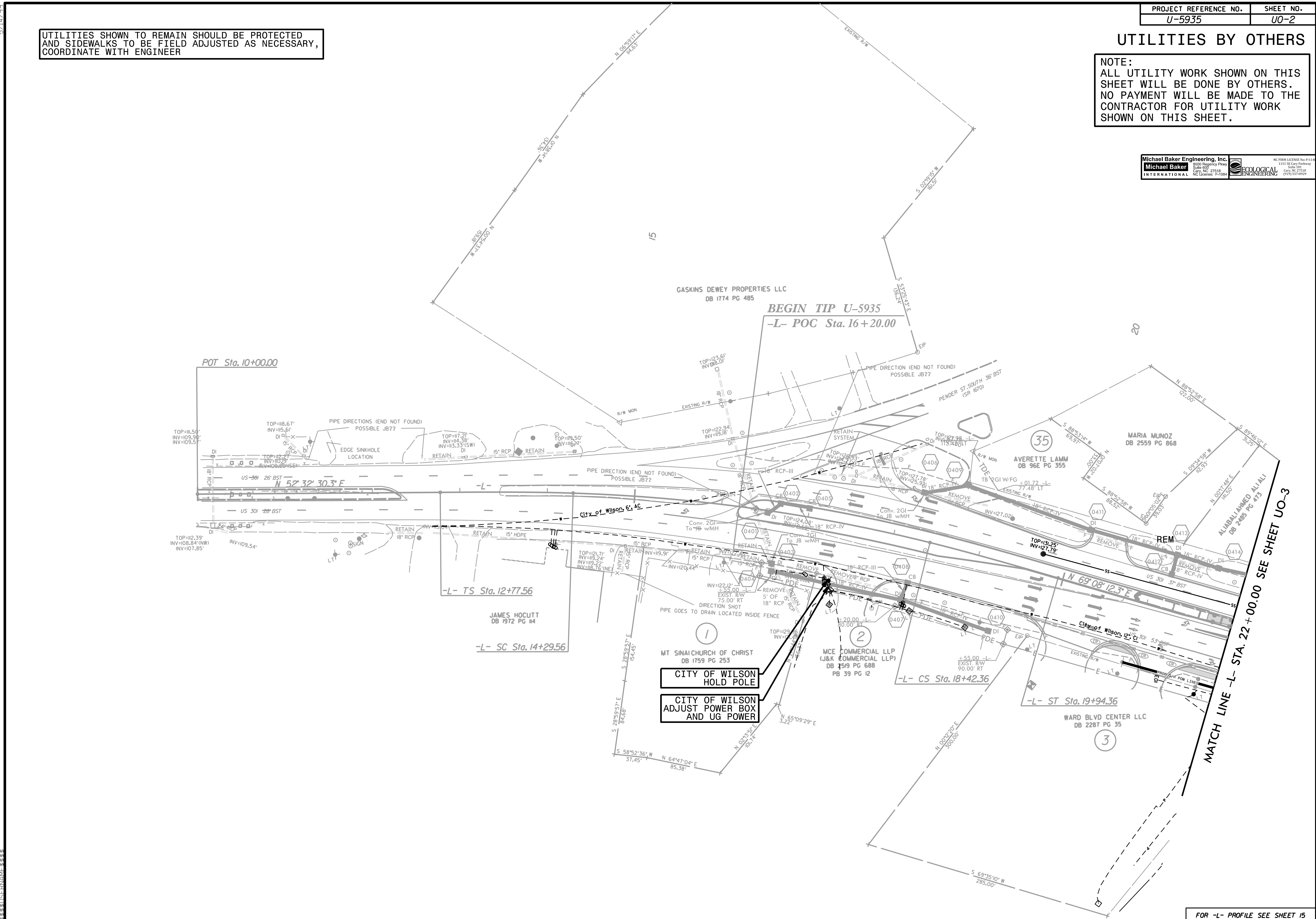
Brandy Creech	UTILITY PROJECT MANAGER
Van Johnson	PROJECT UTILITY COORDINATOR
Christiane Newsome	PROJECT UTILITY TECHNICIAN



UTILITIES SHOWN TO REMAIN SHOULD BE PROTECTED AND SIDEWALKS TO BE FIELD ADJUSTED AS NECESSARY, COORDINATE WITH ENGINEER

UTILITIES BY OTHERS

NOTE:
ALL UTILITY WORK SHOWN ON THIS SHEET WILL BE DONE BY OTHERS. NO PAYMENT WILL BE MADE TO THE CONTRACTOR FOR UTILITY WORK SHOWN ON THIS SHEET.



UTILITIES BY OTHERS

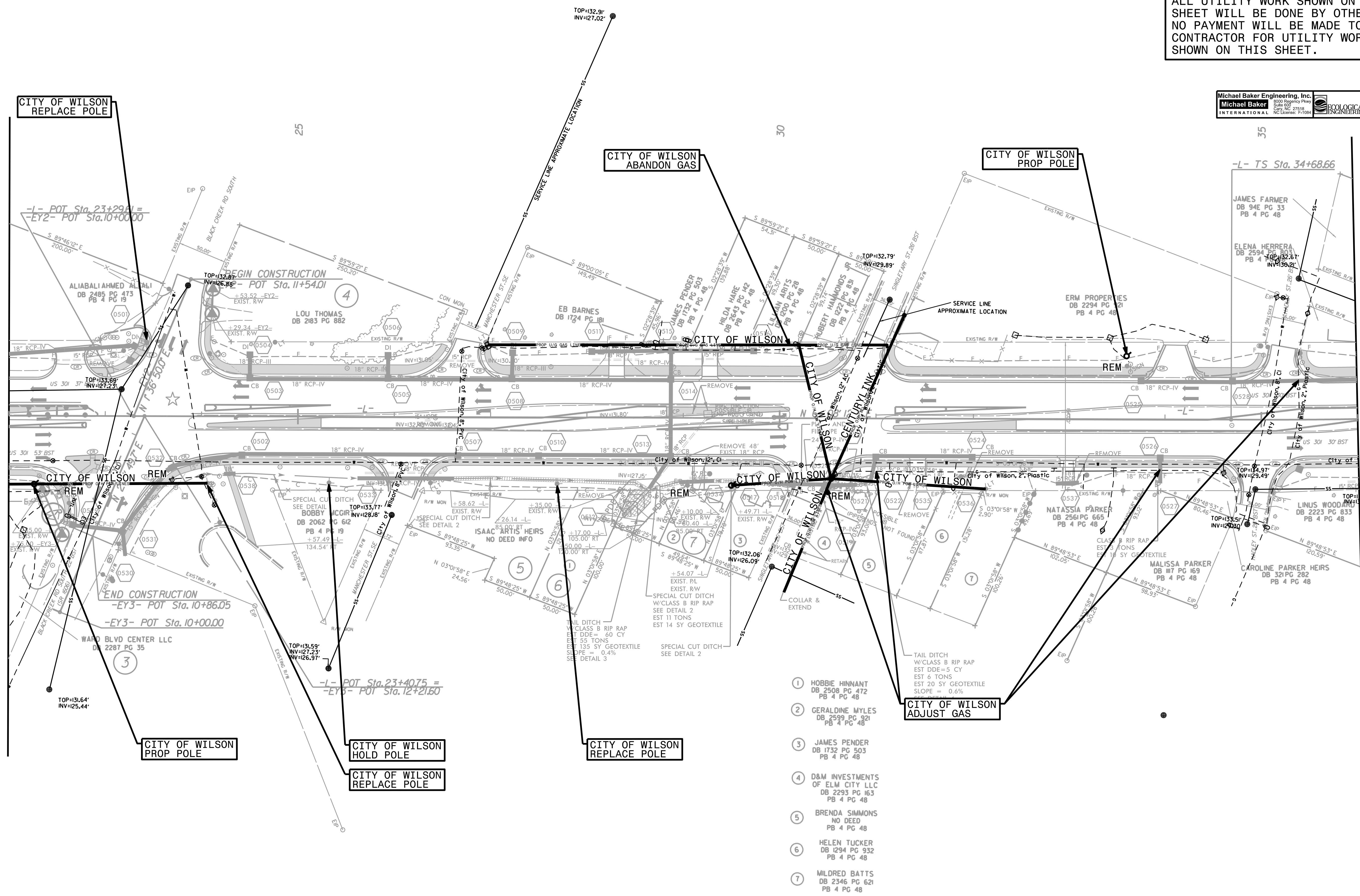
NOTE:
ALL UTILITY WORK SHOWN ON THIS SHEET WILL BE DONE BY OTHERS. NO PAYMENT WILL BE MADE TO THE CONTRACTOR FOR UTILITY WORK SHOWN ON THIS SHEET.



UTILITIES SHOWN TO REMAIN SHOULD BE PROTECTED AND SIDEWALKS TO BE FIELD ADJUSTED AS NECESSARY, COORDINATE WITH ENGINEER

MATCH LINE -L- STA. 22 + 00.00 SEE SHEET UO-2

MATCH LINE -L- STA. 36 + 00.00 SEE SHEET UO-4



- 1 HOBBIE HINNANT DB 2508 PG 472 PB 4 PG 48
- 2 GERALDINE MYLES DB 2599 PG 321 PB 4 PG 48
- 3 JAMES PENDER DB 1732 PG 503 PB 4 PG 48
- 4 D&M INVESTMENTS OF ELM CITY LLC DB 2293 PG 163 PB 4 PG 48
- 5 BRENDA SIMMONS NO DEED PB 4 PG 48
- 6 HELEN TUCKER DB 2294 PG 932 PB 4 PG 48
- 7 MILDRED BATTS DB 2346 PG 621 PB 4 PG 48

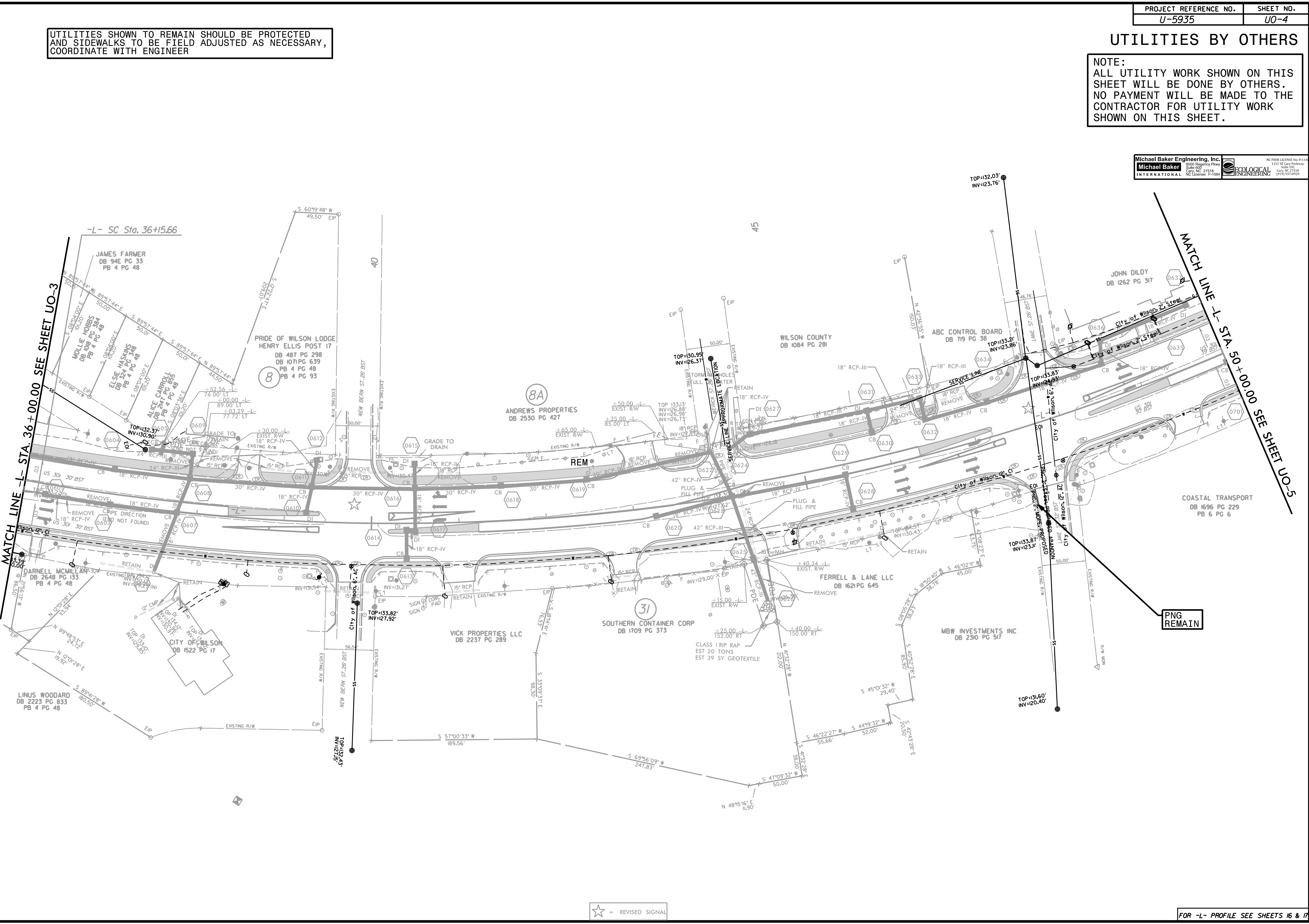
☆ = REVISED SIGNAL

UTILITIES BY OTHERS

UTILITIES SHOWN TO REMAIN SHOULD BE PROTECTED AND SIDEWALKS TO BE FIELD ADJUSTED AS NECESSARY, COORDINATE WITH ENGINEER

NOTE:
ALL UTILITY WORK SHOWN ON THIS SHEET WILL BE DONE BY OTHERS. NO PAYMENT WILL BE MADE TO THE CONTRACTOR FOR UTILITY WORK SHOWN ON THIS SHEET.

5/14/2019



☆ = REVISED SIGNAL

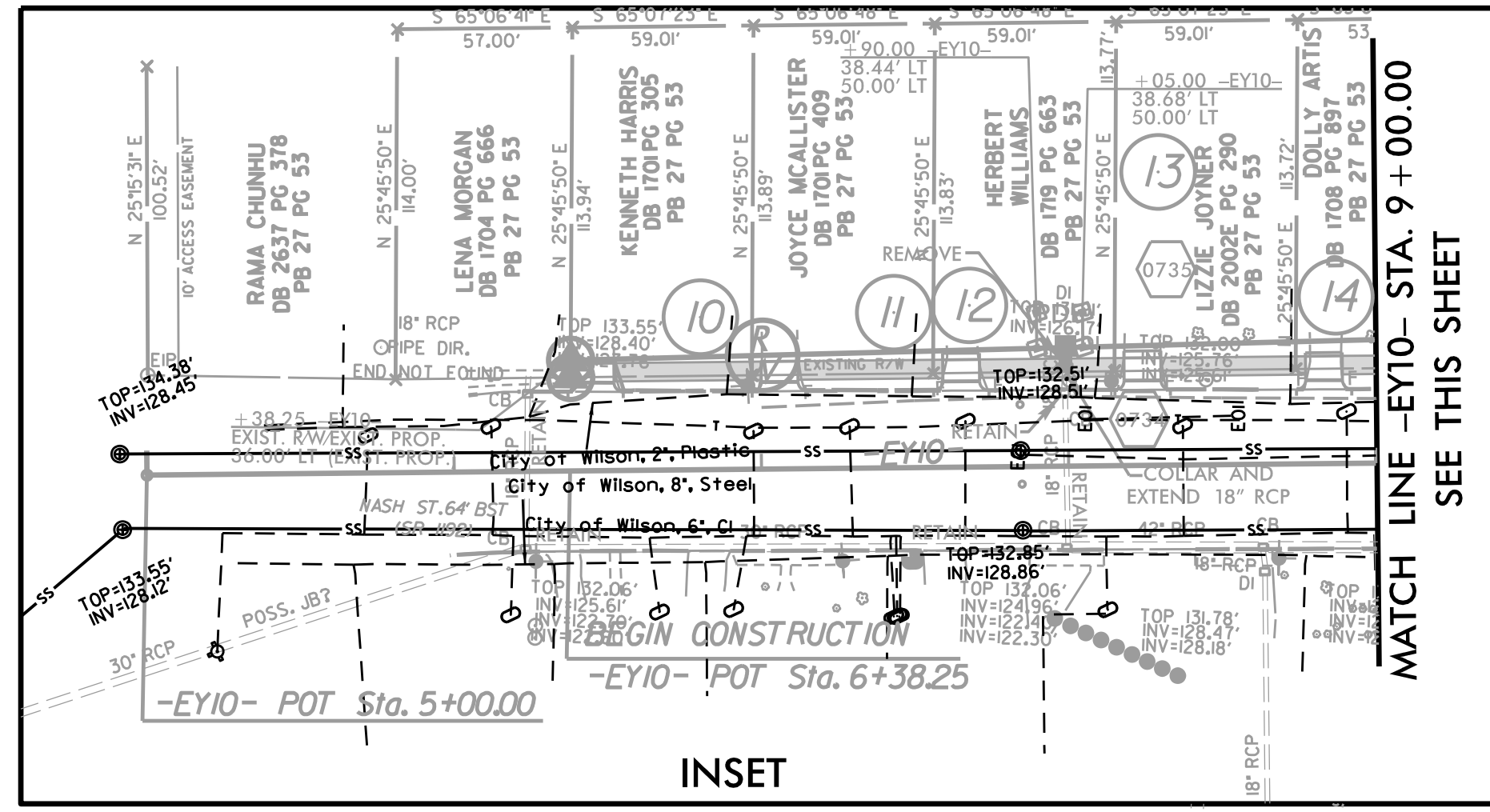
MATCH LINE -EY10- STA. 9+00.00 UTILITIES BY OTHERS
SEE INSET "A" THIS SHEET

NOTE:
ALL UTILITY WORK SHOWN ON THIS SHEET WILL BE DONE BY OTHERS.
NO PAYMENT WILL BE MADE TO THE CONTRACTOR FOR UTILITY WORK SHOWN ON THIS SHEET.

Michael Baker Engineering, Inc.
1000 Republic Place
Suite 100
Cary, NC 27518
Phone: 919.275.1111
Fax: 919.275.1112
www.mbakeng.com

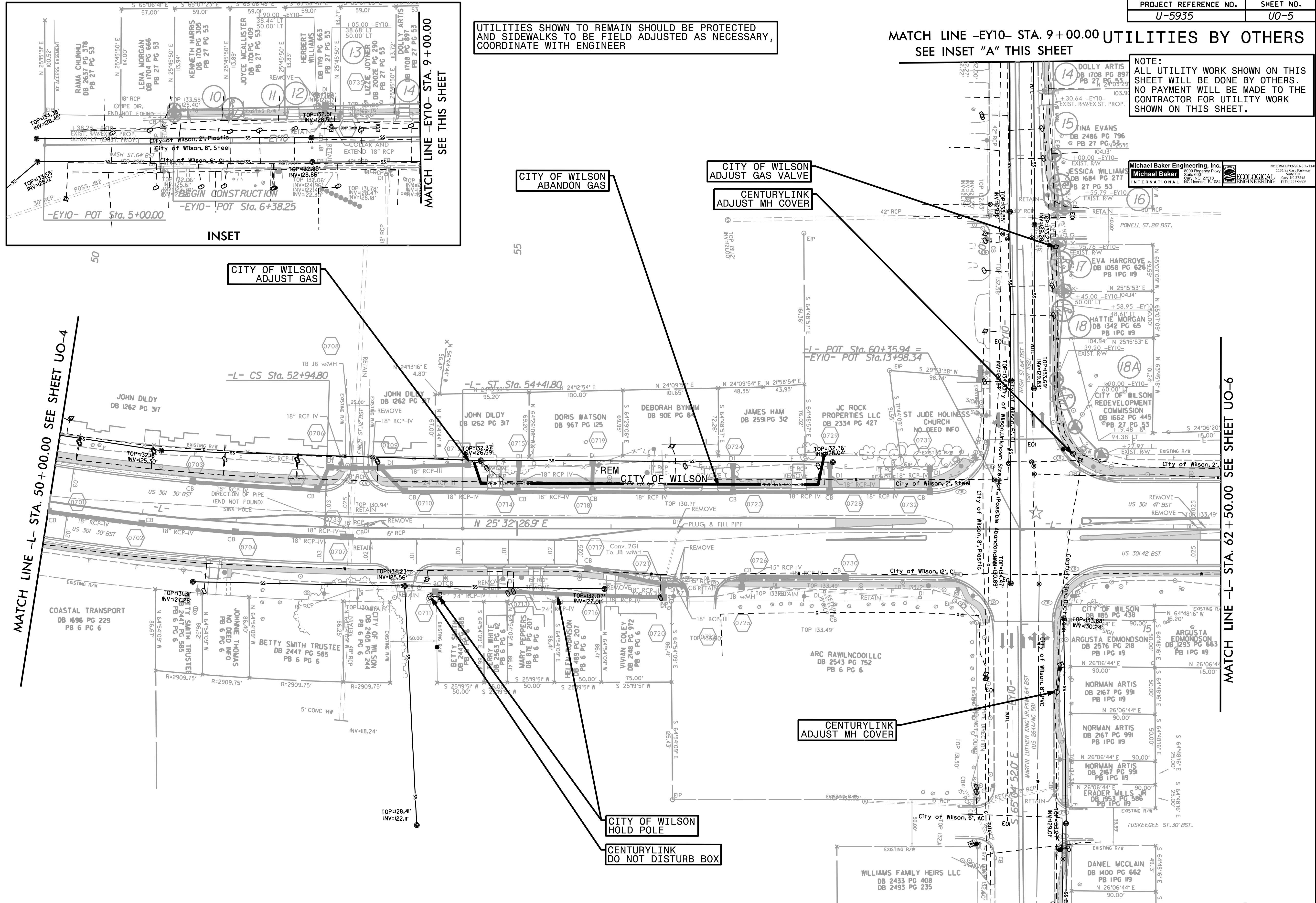
ECOLOGICAL ENGINEERING
11111 Research Parkway
Suite 110
Cary, NC 27518
Phone: 919.275.1111
Fax: 919.275.1112
www.ecoeng.com

UTILITIES SHOWN TO REMAIN SHOULD BE PROTECTED AND SIDEWALKS TO BE FIELD ADJUSTED AS NECESSARY, COORDINATE WITH ENGINEER



MATCH LINE -L- STA. 50+00.00 SEE SHEET UO-4

MATCH LINE -L- STA. 62+50.00 SEE SHEET UO-6



☆ = REVISED SIGNAL

MATCH LINE -EY10- STA. 18+00.00 SEE SHEET UO-8

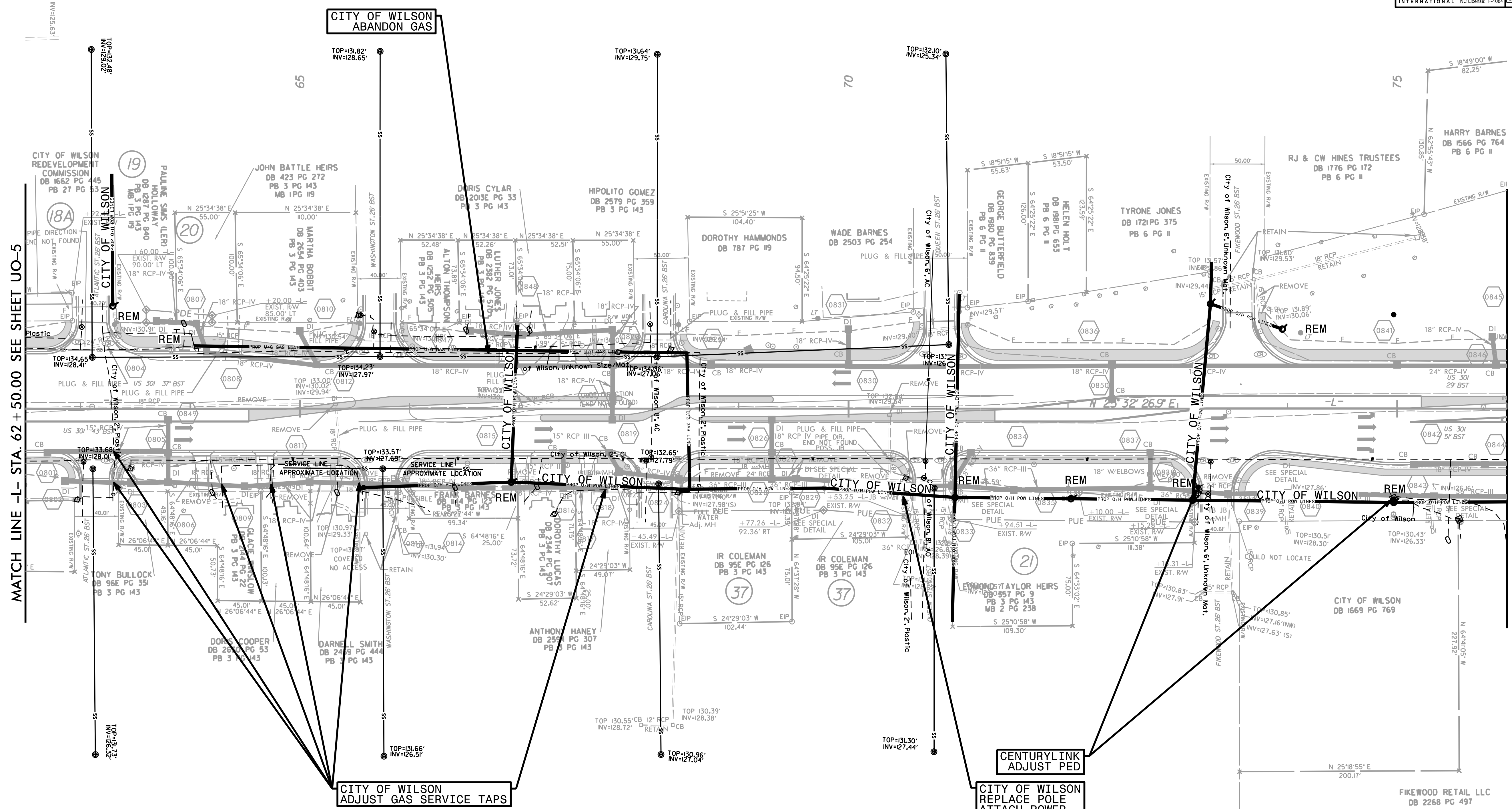
UTILITIES BY OTHERS

NOTE:
 ALL UTILITY WORK SHOWN ON THIS SHEET WILL BE DONE BY OTHERS. NO PAYMENT WILL BE MADE TO THE CONTRACTOR FOR UTILITY WORK SHOWN ON THIS SHEET.



5/14/99

UTILITIES SHOWN TO REMAIN SHOULD BE PROTECTED AND SIDEWALKS TO BE FIELD ADJUSTED AS NECESSARY, COORDINATE WITH ENGINEER



MATCH LINE -L- STA. 62+50.00 SEE SHEET UO-5

MATCH LINE -L- STA. 76+00.00 SEE SHEET UO-7

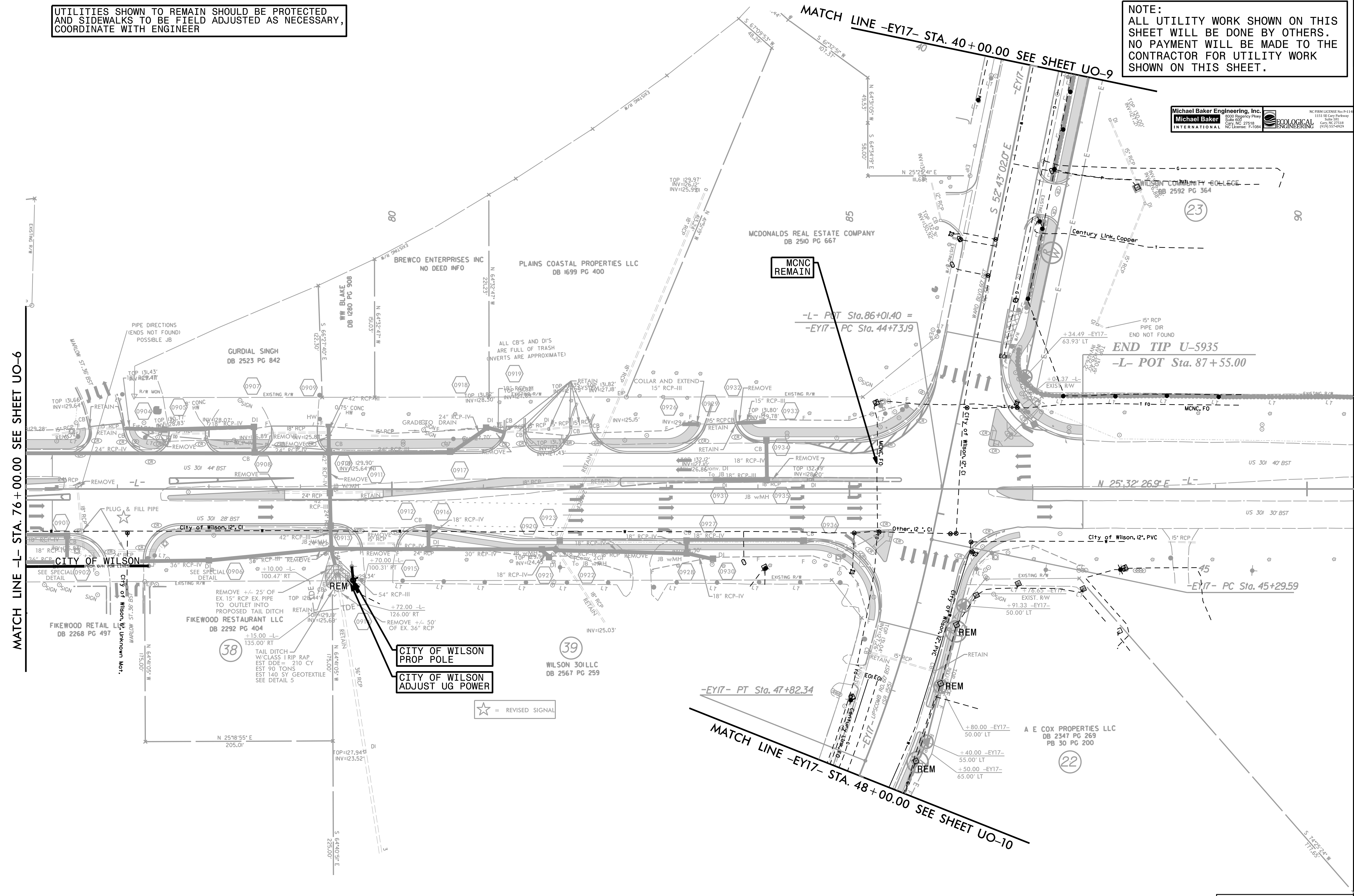
UTILITIES BY OTHERS

UTILITIES SHOWN TO REMAIN SHOULD BE PROTECTED AND SIDEWALKS TO BE FIELD ADJUSTED AS NECESSARY, COORDINATE WITH ENGINEER

NOTE:
ALL UTILITY WORK SHOWN ON THIS SHEET WILL BE DONE BY OTHERS. NO PAYMENT WILL BE MADE TO THE CONTRACTOR FOR UTILITY WORK SHOWN ON THIS SHEET.

Michael Baker Engineering, Inc.
Michael Baker INTERNATIONAL

ECOLOGICAL ENGINEERING



MATCH LINE -L- STA. 76+00.00 SEE SHEET UO-6

MCNC REMAIN

-L- POT Sta. 86+01.40 =
-EY17- PC Sta. 44+73.19

END TIP U-5935
-L- POT Sta. 87+55.00

CITY OF WILSON
PROP POLE

CITY OF WILSON
ADJUST UG POWER

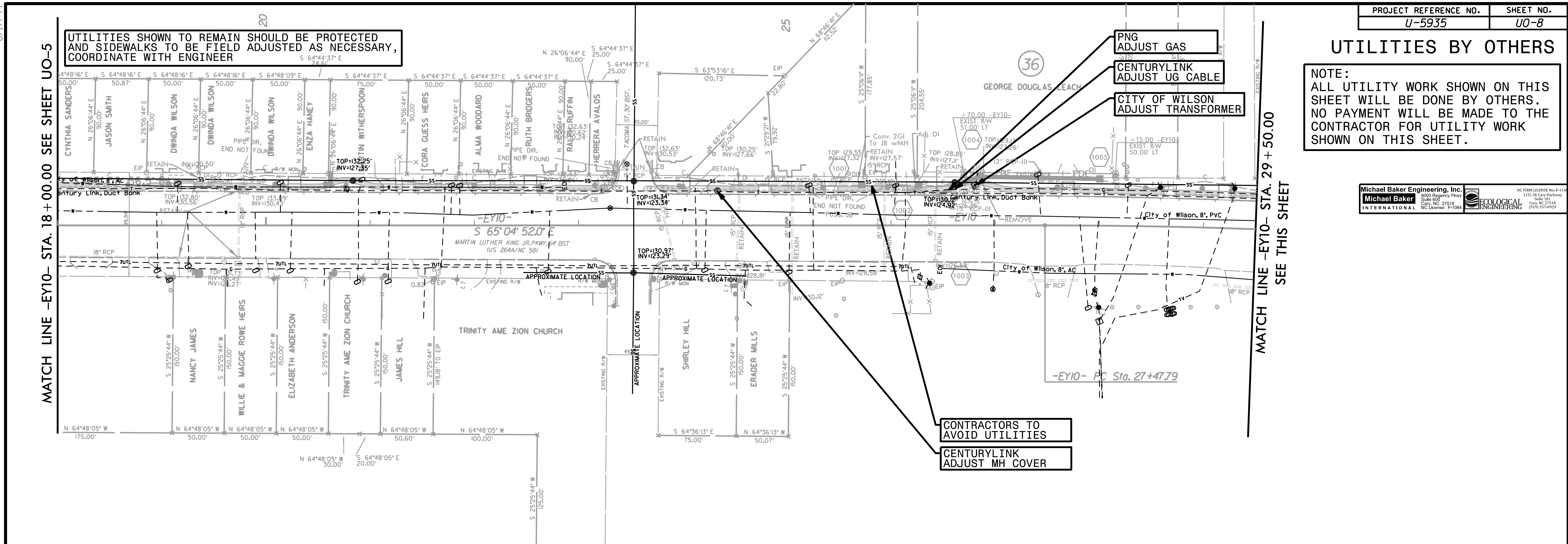
☆ = REVISED SIGNAL

UTILITIES BY OTHERS

NOTE:
ALL UTILITY WORK SHOWN ON THIS SHEET WILL BE DONE BY OTHERS. NO PAYMENT WILL BE MADE TO THE CONTRACTOR FOR UTILITY WORK SHOWN ON THIS SHEET.



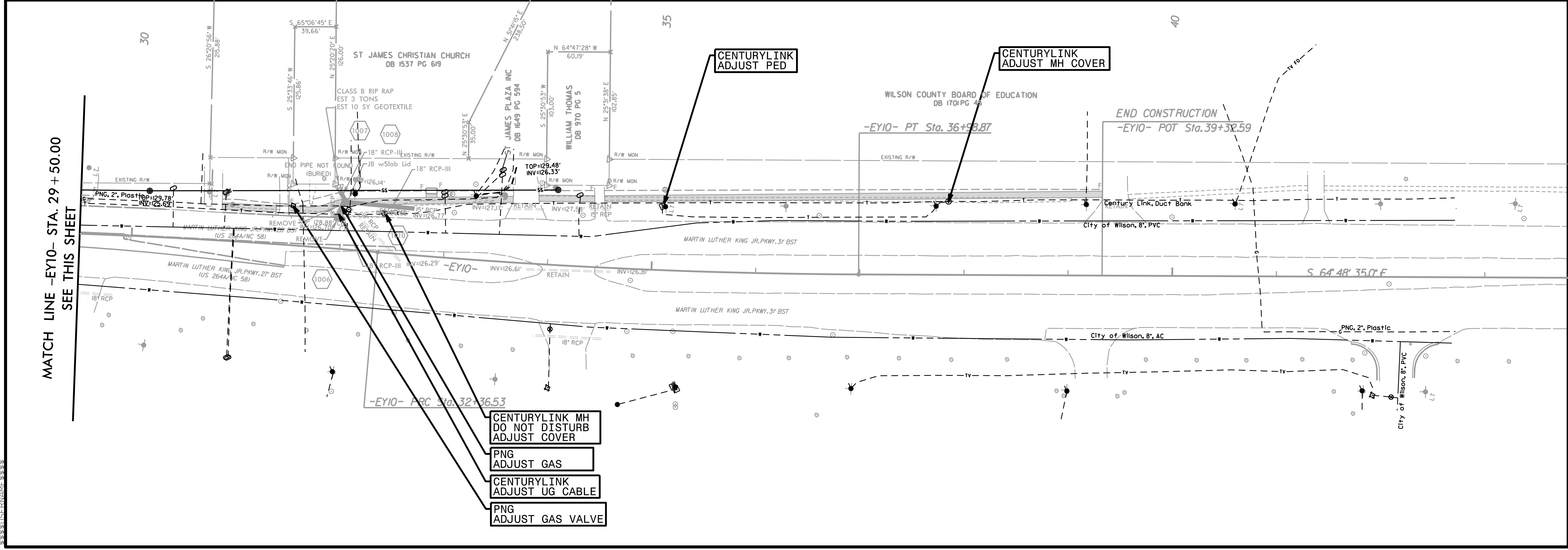
UTILITIES SHOWN TO REMAIN SHOULD BE PROTECTED AND SIDEWALKS TO BE FIELD ADJUSTED AS NECESSARY, COORDINATE WITH ENGINEER



MATCH LINE -EY10- STA. 18 + 00.00 SEE SHEET UO-5

MATCH LINE -EY10- STA. 29 + 50.00 SEE THIS SHEET

MATCH LINE -EY10- STA. 29 + 50.00 SEE THIS SHEET



- CENTURYLINK MH DO NOT DISTURB ADJUST COVER
- PNG ADJUST GAS
- CENTURYLINK ADJUST UG CABLE
- PNG ADJUST GAS VALVE

CENTURYLINK ADJUST PED

CENTURYLINK ADJUST MH COVER

CONTRACTORS TO AVOID UTILITIES

CENTURYLINK ADJUST MH COVER

8.17.99

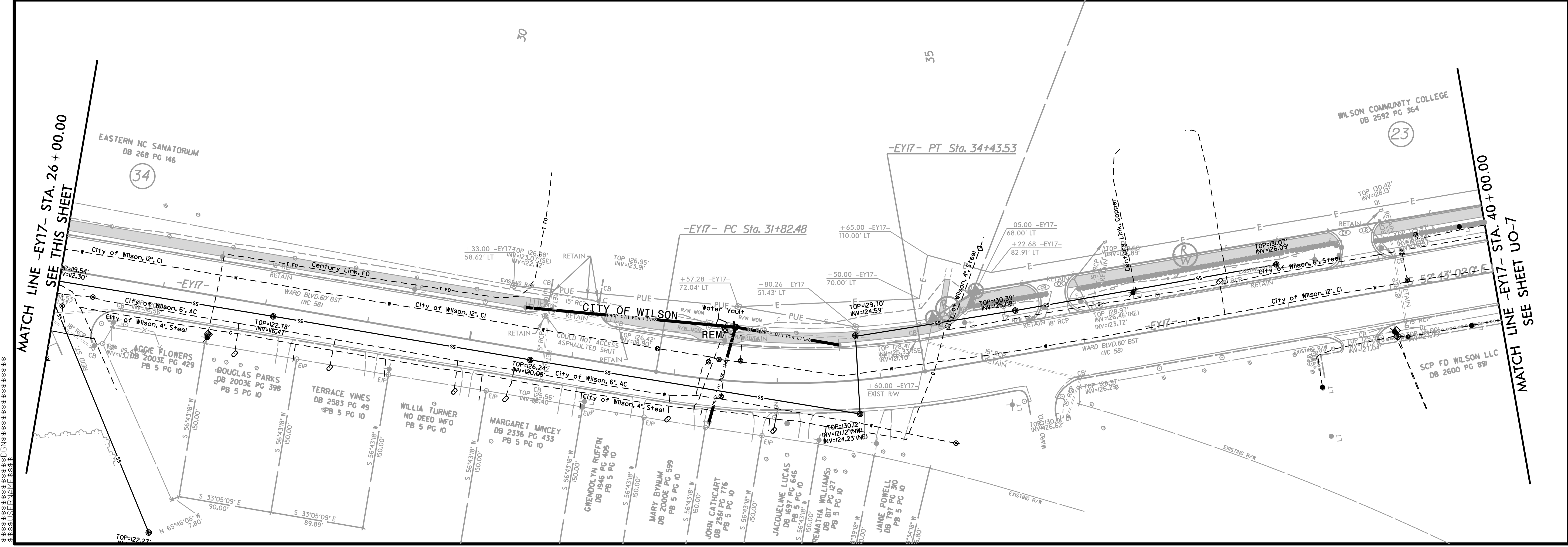
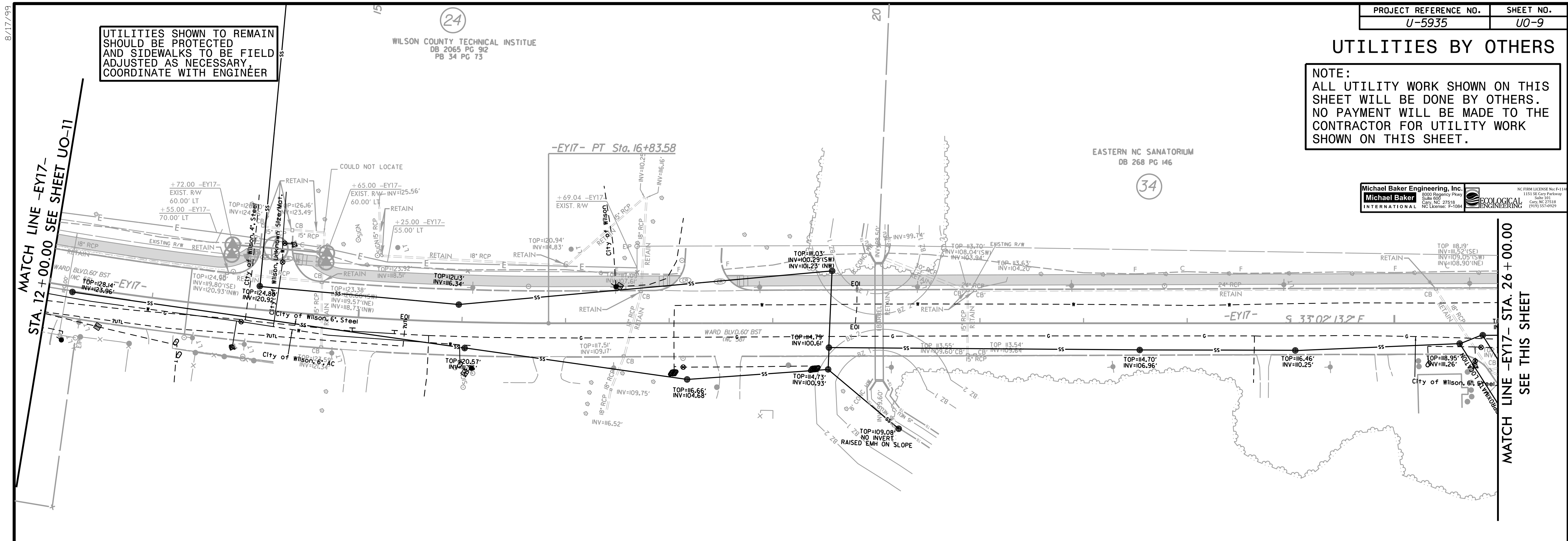
UTILITIES BY OTHERS

NOTE:
ALL UTILITY WORK SHOWN ON THIS SHEET WILL BE DONE BY OTHERS. NO PAYMENT WILL BE MADE TO THE CONTRACTOR FOR UTILITY WORK SHOWN ON THIS SHEET.

Michael Baker Engineering, Inc.
1103 SE City Parkway
City, NC 27518
NC License: F-1084

Michael Baker International

ECOLOGICAL ENGINEERING
1103 SE City Parkway
City, NC 27518
(919) 557-9929



UTILITIES SHOWN TO REMAIN SHOULD BE PROTECTED AND SIDEWALKS TO BE FIELD ADJUSTED AS NECESSARY. COORDINATE WITH ENGINEER

MATCH LINE -EY17- STA. 12+00.00 SEE SHEET UO-11

MATCH LINE -EY17- STA. 26+00.00 SEE THIS SHEET

MATCH LINE -EY17- STA. 26+00.00 SEE THIS SHEET

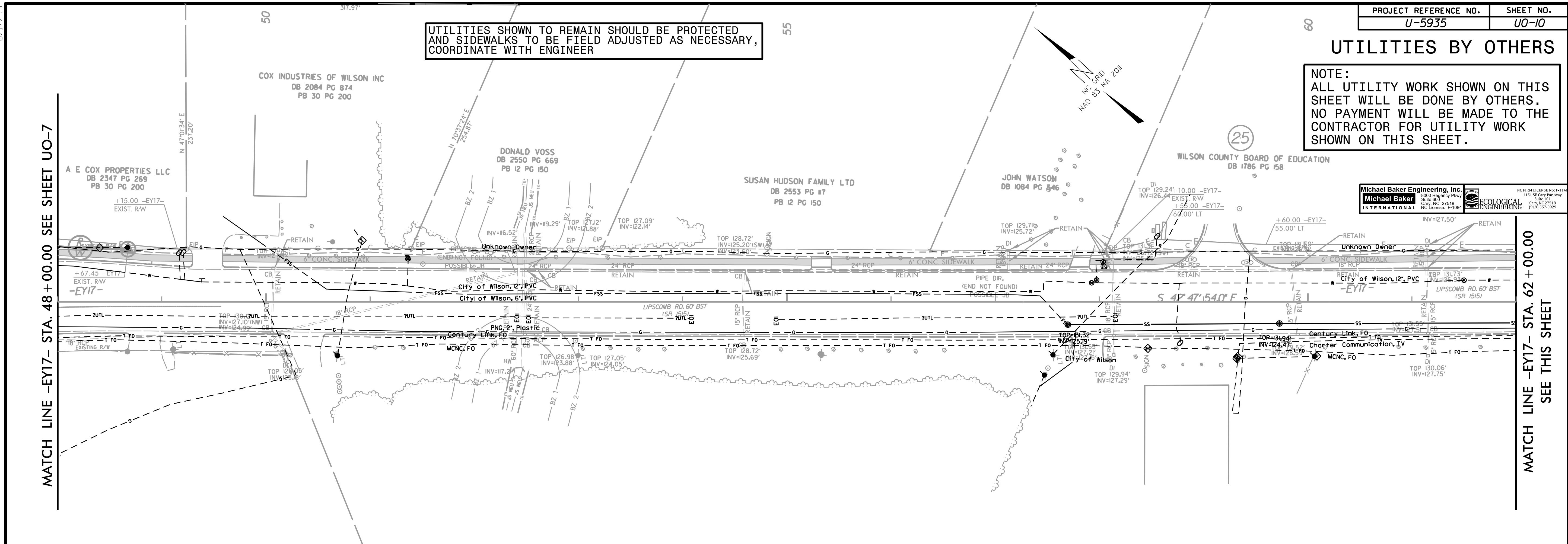
MATCH LINE -EY17- STA. 40+00.00 SEE SHEET UO-7

CITY OF WILSON, NC

UTILITIES BY OTHERS

NOTE:
ALL UTILITY WORK SHOWN ON THIS SHEET WILL BE DONE BY OTHERS. NO PAYMENT WILL BE MADE TO THE CONTRACTOR FOR UTILITY WORK SHOWN ON THIS SHEET.

UTILITIES SHOWN TO REMAIN SHOULD BE PROTECTED AND SIDEWALKS TO BE FIELD ADJUSTED AS NECESSARY, COORDINATE WITH ENGINEER

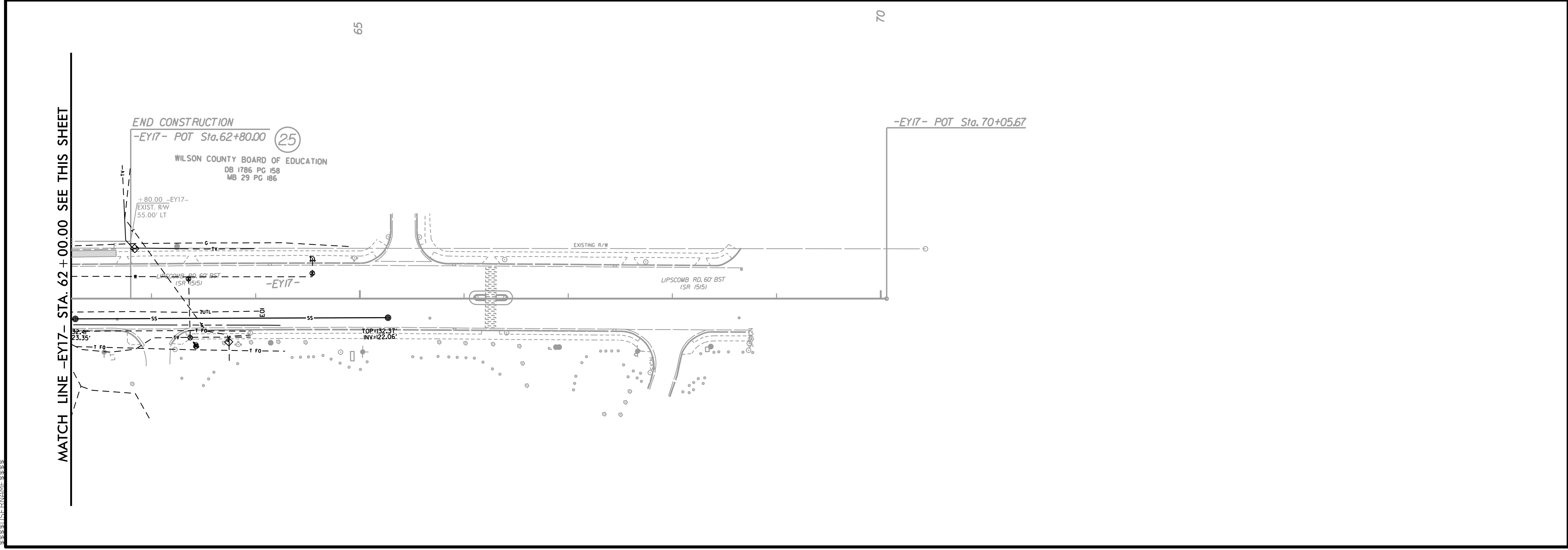


Michael Baker Engineering, Inc.
INTERNATIONAL
1111 S. Blue Ridge Parkway
Suite 100
Cary, NC 27518
NC License: F-1084
(919) 957-4929

MATCH LINE -EY17- STA. 62 + 00.00 SEE THIS SHEET

MATCH LINE -EY17- STA. 48 + 00.00 SEE SHEET UO-7

MATCH LINE -EY17- STA. 62 + 00.00 SEE THIS SHEET



END CONSTRUCTION
-EY17- POT Sta. 62+80.00
WILSON COUNTY BOARD OF EDUCATION
DB 1786 PG 158
MB 29 PG 186

-EY17- POT Sta. 70+05.67

8.17/99

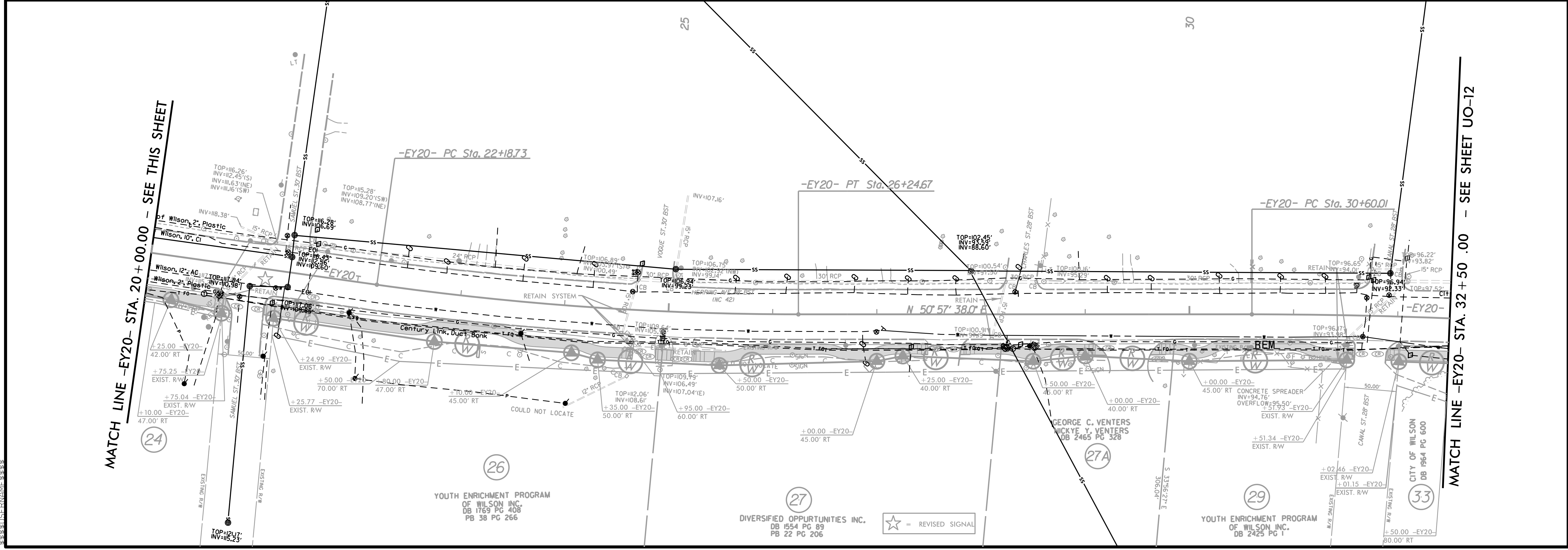
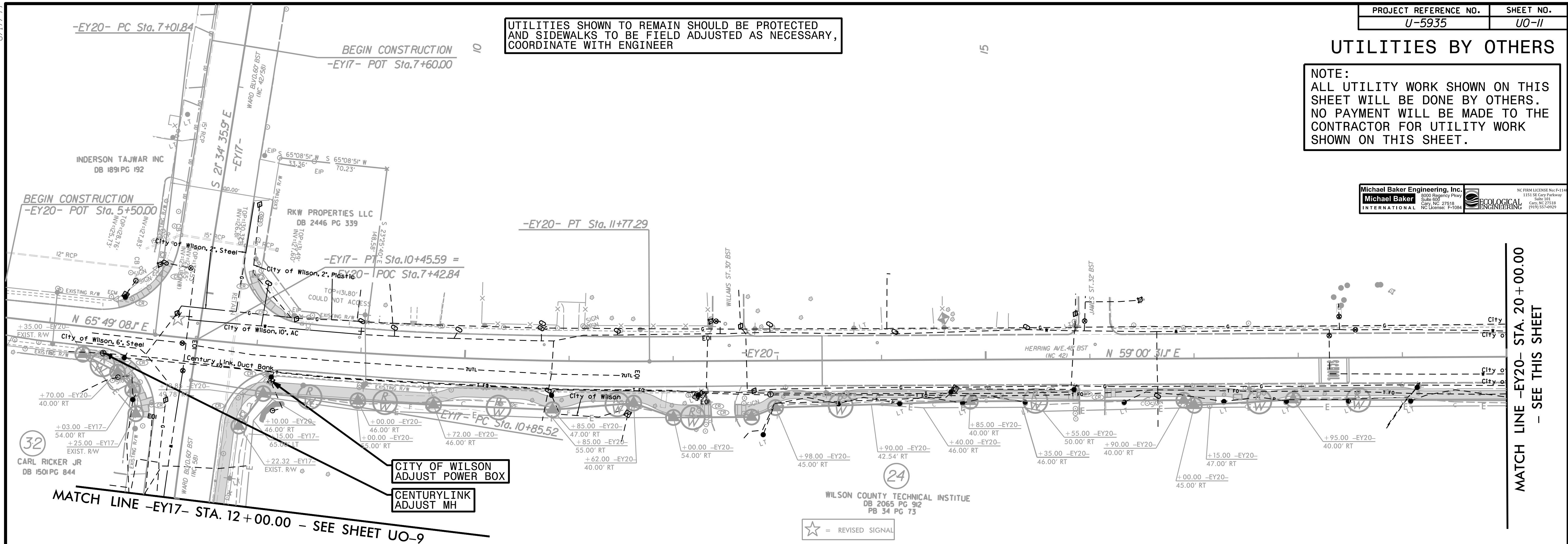
\$\$\$\$\$

UTILITIES BY OTHERS

NOTE:
ALL UTILITY WORK SHOWN ON THIS SHEET WILL BE DONE BY OTHERS. NO PAYMENT WILL BE MADE TO THE CONTRACTOR FOR UTILITY WORK SHOWN ON THIS SHEET.



UTILITIES SHOWN TO REMAIN SHOULD BE PROTECTED AND SIDEWALKS TO BE FIELD ADJUSTED AS NECESSARY, COORDINATE WITH ENGINEER

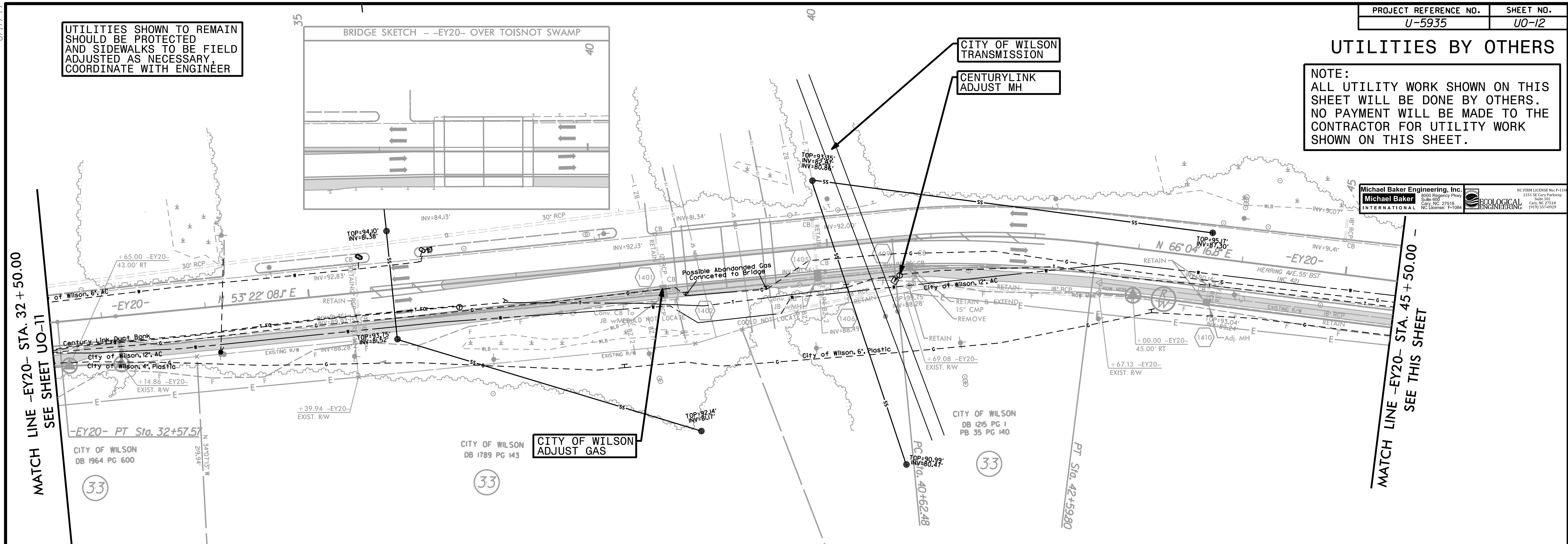
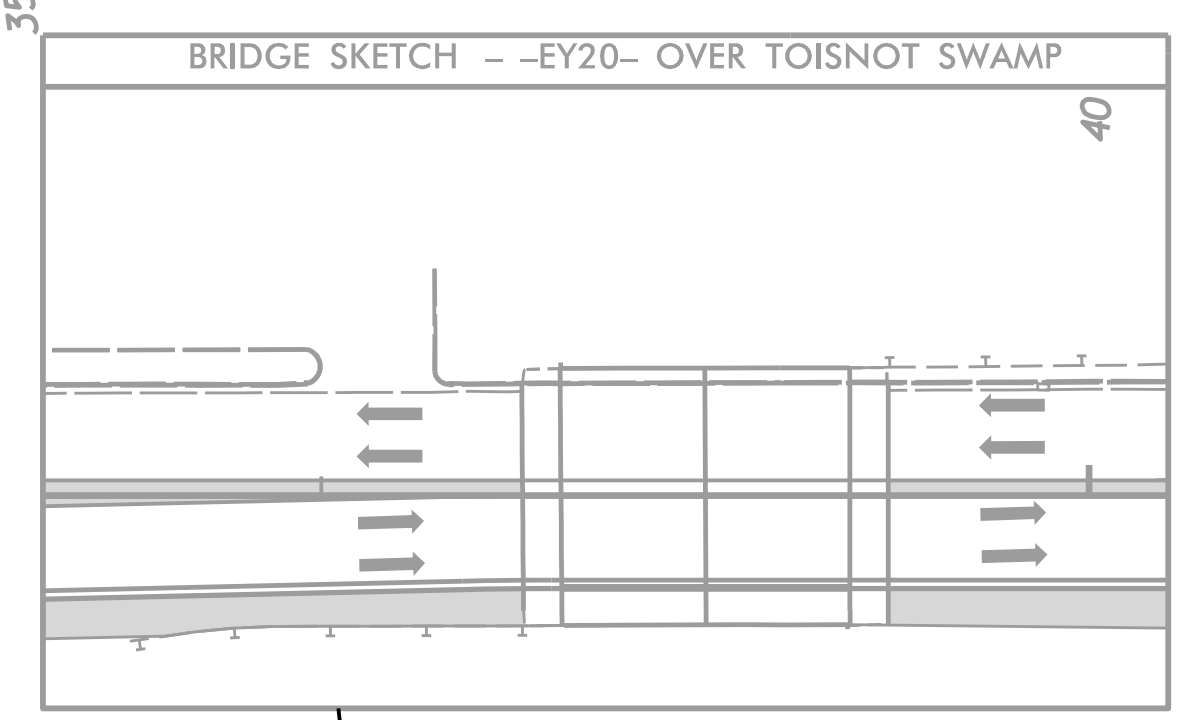


8.17/99

UTILITIES BY OTHERS

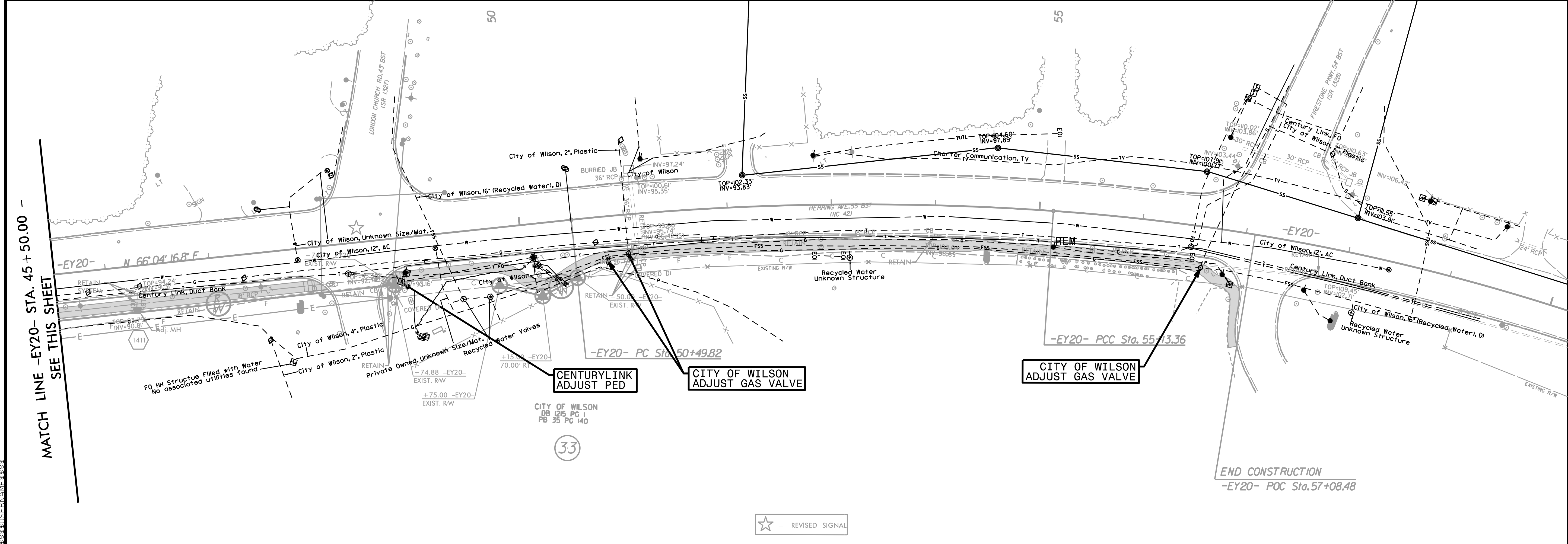
NOTE:
ALL UTILITY WORK SHOWN ON THIS SHEET WILL BE DONE BY OTHERS. NO PAYMENT WILL BE MADE TO THE CONTRACTOR FOR UTILITY WORK SHOWN ON THIS SHEET.

UTILITIES SHOWN TO REMAIN SHOULD BE PROTECTED AND SIDEWALKS TO BE FIELD ADJUSTED AS NECESSARY, COORDINATE WITH ENGINEER



Michael Baker Engineering, Inc.
3000 Research Park
Suite 600
Cary, NC 27518
NC License: P-1084

ECOLOGICAL ENGINEERING
1103 SE Cary Parkway
Suite 101
Cary, NC 27518
(919) 557-9929



☆ = REVISED SIGNAL

END CONSTRUCTION
-EY20- POC Sta. 57+08.48

8.17.99