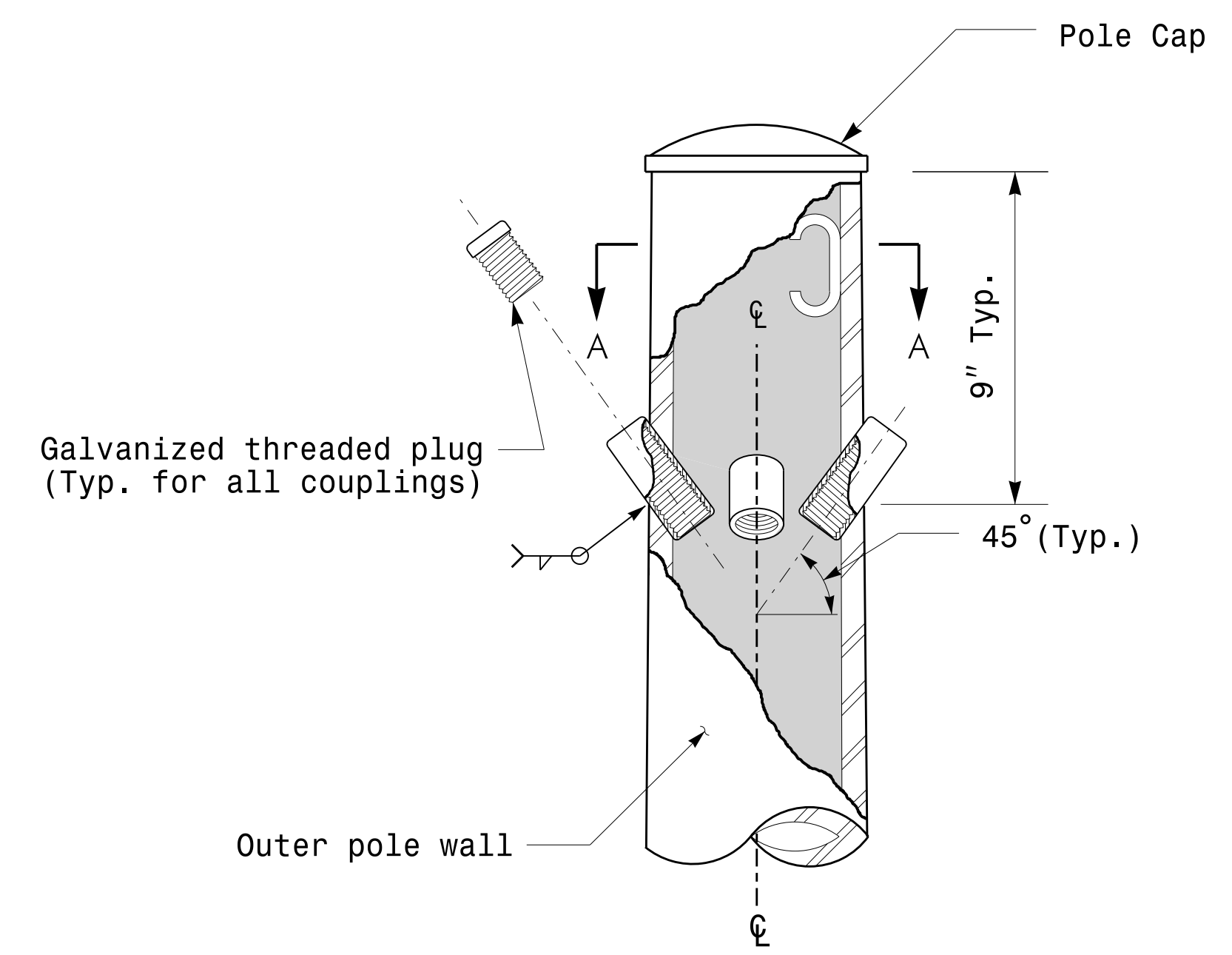
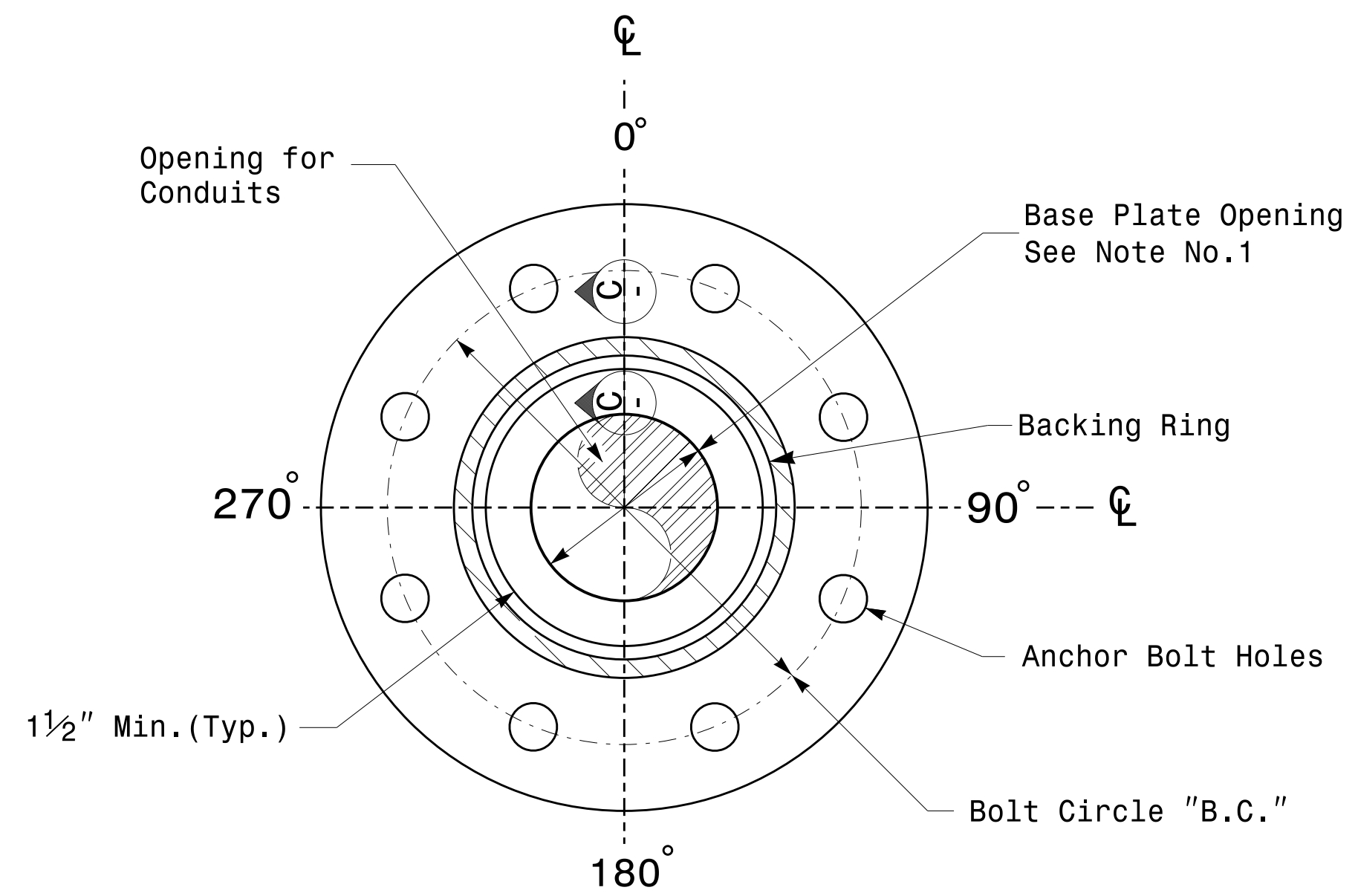


Note:
 1. Opening in pole base plate shall be equal to pole base inside diameter minus 3 1/2" but shall not be less than 8 1/2".

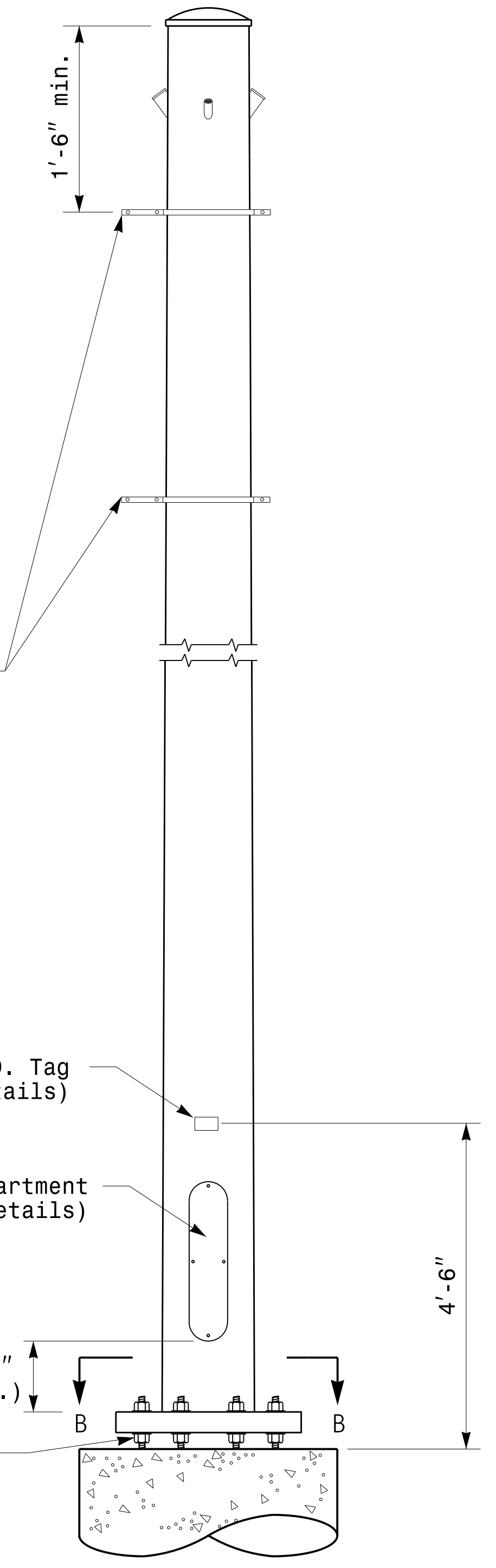


Cable Entrances at Top of Pole

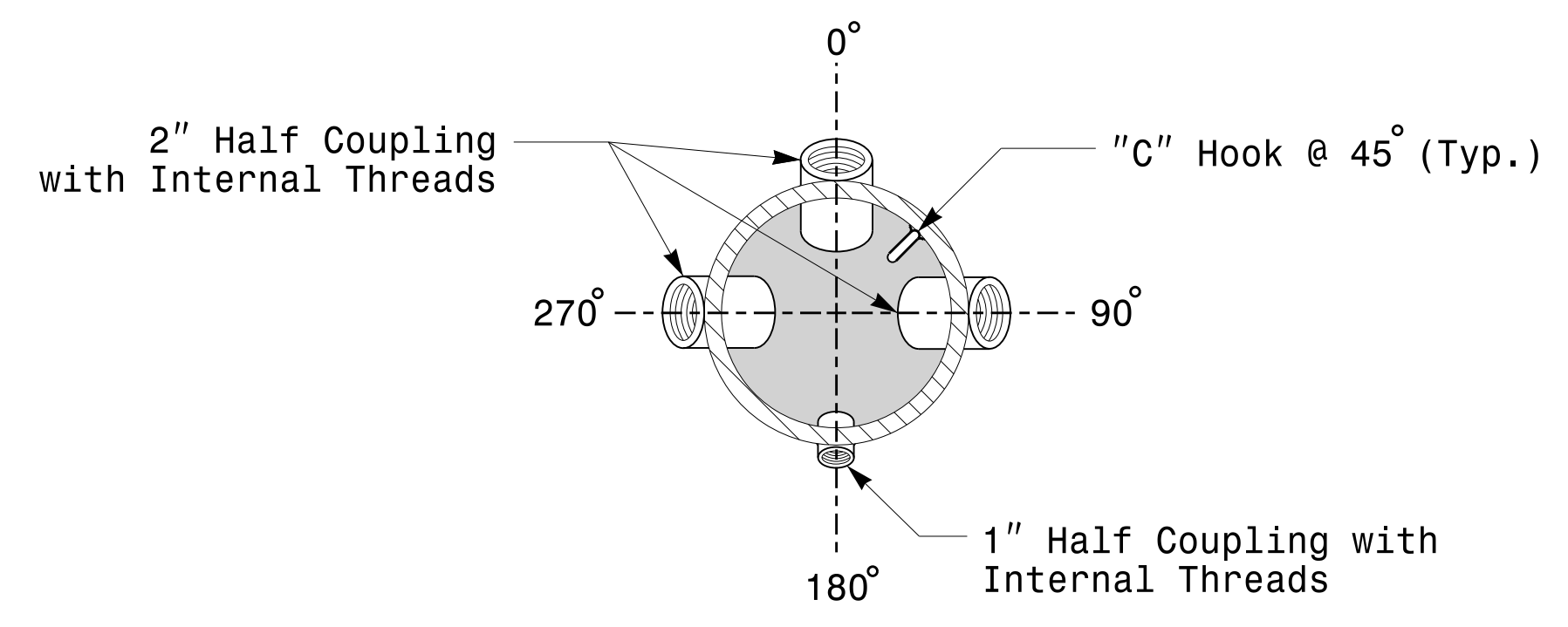


Section B-B
Pole Base Plate Details
(8 and 12 Bolt Pattern)

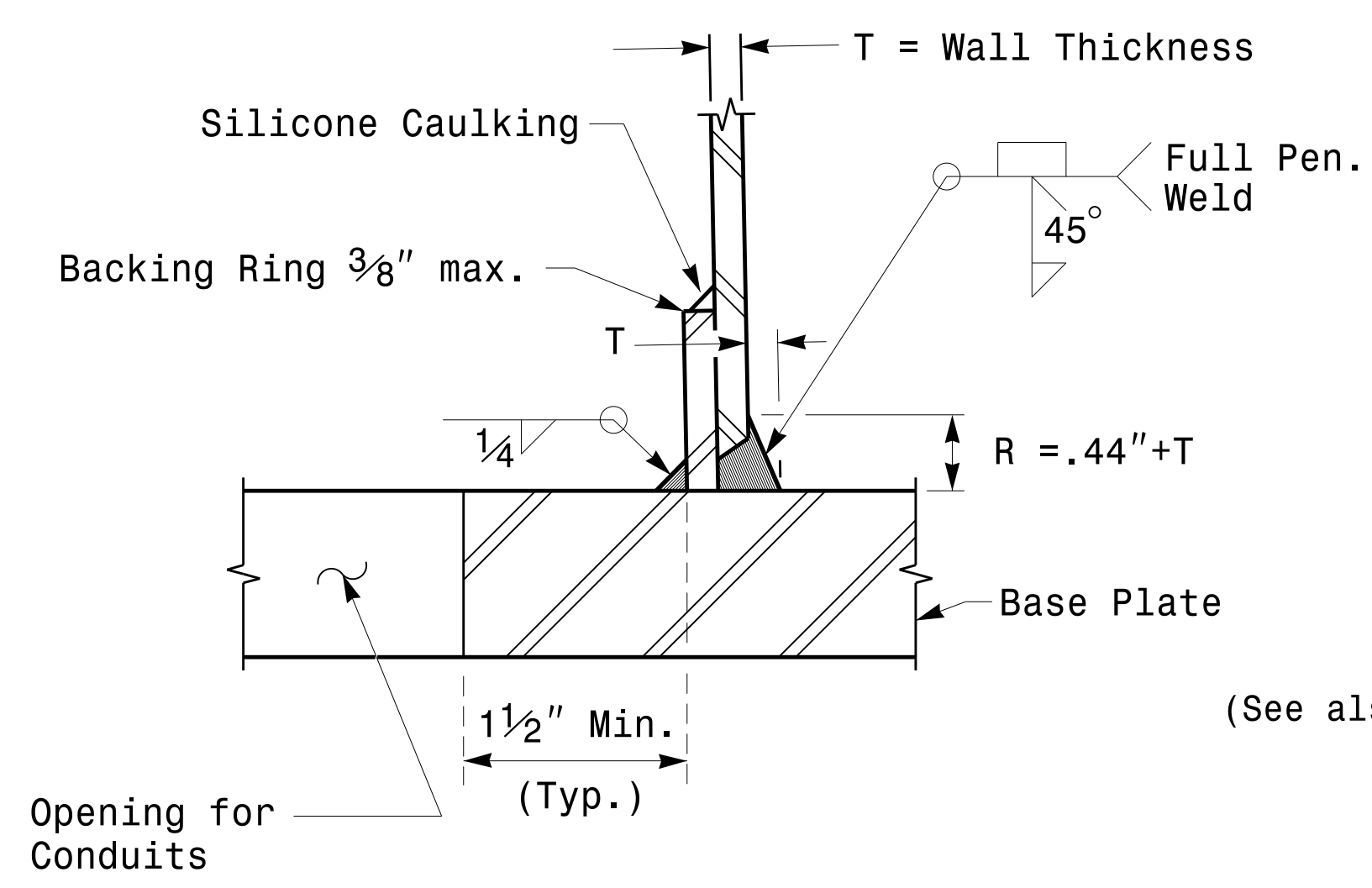
2 Cable Clamps designed for variable attachment heights from 1'-6" to 5'-0" below the top of the pole.



Monotube Strain Pole



Section A-A
Radial Orientation for Factory Installed
Accessories at Top of Pole



Section C-C
(Pole Attachment to Base Plate)
Full-Penetration
Groove Weld Detail

Prepared in the Offices of:

 750 N. Greenleaf Pkwy, Garner, NC 27529

| Typical Fabrication Details For Strain Poles | | | |
|--|---------------|--------------|--------------|
| PLAN DATE: | FEBRUARY 2016 | DESIGNED BY: | K.C. DURIGON |
| PREPARED BY: | N. BITTING | REVIEWED BY: | D.C. SARKAR |
| REVISIONS | INIT. | DATE | |
| | | | |
| | | | |

SEAL

 DocuSigned by:

 44E8E32E147E4C4...
 2/17/2016
 DATE

17-FEB-2016 16:04
 T:\SCD\115 Signal\sig Design Section\Eastern Region\Sheet\2016\2014_Sig_M3_Std_Fabrication_Details-Strain_Poles.dgn
 3:01 PM

Fabrication Details – Strain Poles