

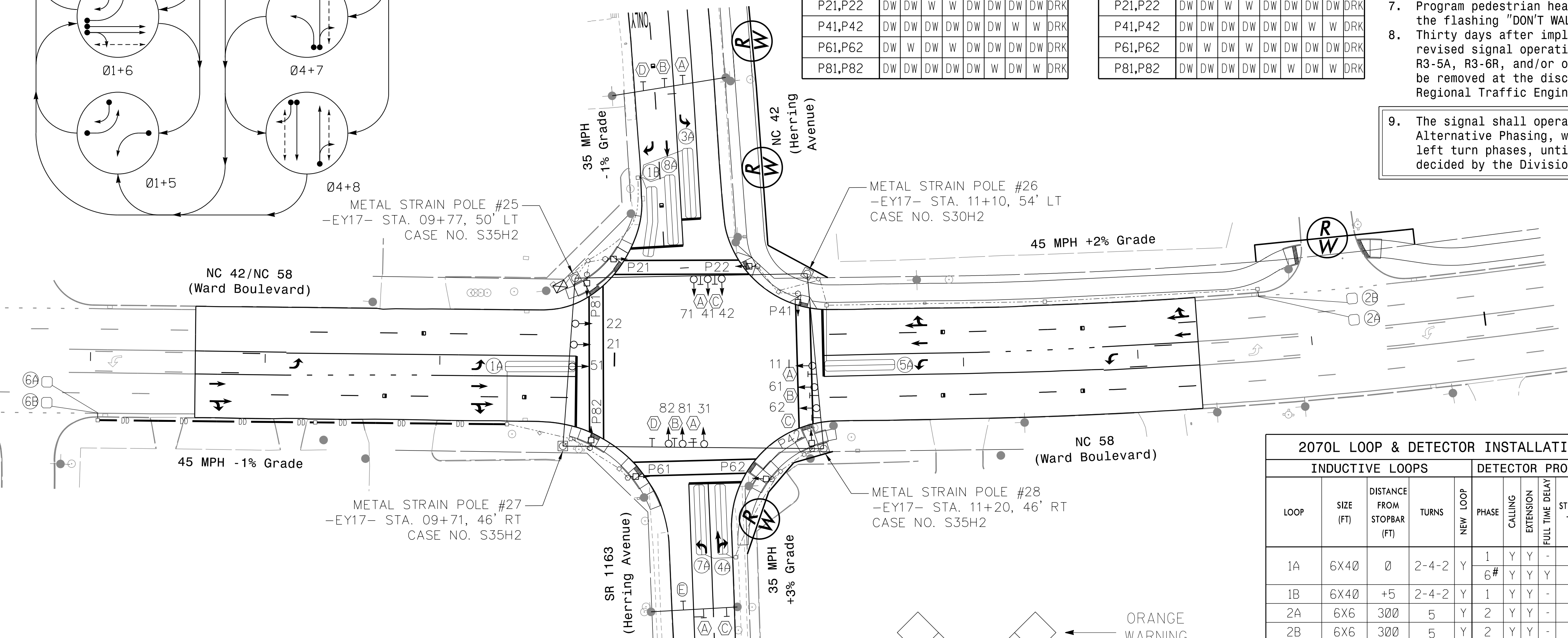
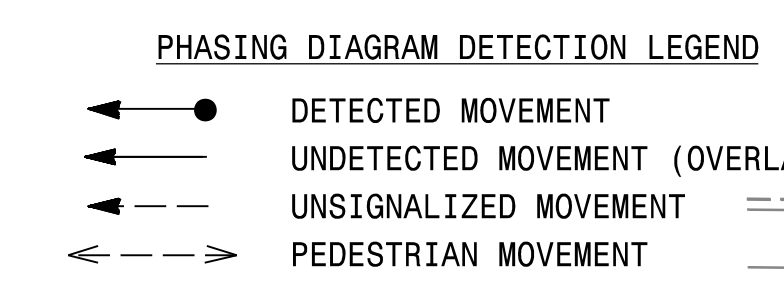
DEFAULT PHASING TABLE OF OPERATION

SIGNAL FACE	PHASE								FLASH
	01+5	01+6	02+5	02+6	03+7	03+8	04+7	04+8	
11	←	←	←	←	←	←	←	←	Y
21,22	R	R	G	G	R	R	R	R	Y
31	←	←	←	←	←	←	←	←	Y
41,42	R	R	R	R	R	R	G	G	Y
51	←	←	←	←	←	←	←	←	Y
61,62	R	G	R	G	R	R	R	R	Y
71	←	←	←	←	←	←	←	←	Y
81	R	R	R	R	R	G	G	R	Y
82	R	R	R	R	R	G	G	R	Y
P21,P22	DW	DW	W	W	DW	DW	DW	DRK	
P41,P42	DW	DW	DW	DW	DW	DW	W	DRK	
P61,P62	DW	W	DW	W	DW	DW	DW	DRK	
P81,P82	DW	DW	DW	DW	W	DW	W	DRK	

ALTERNATIVE PHASING TABLE OF OPERATION

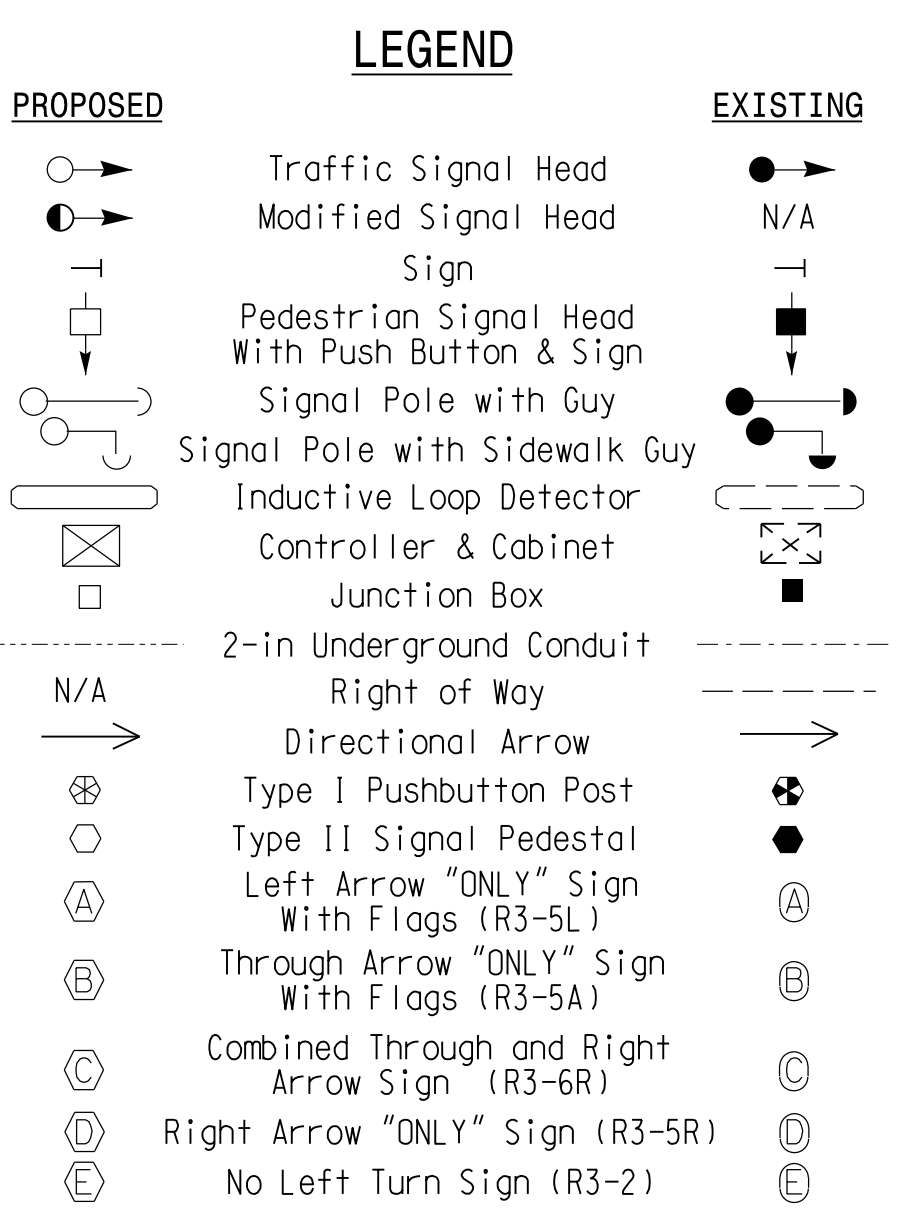
SIGNAL FACE	PHASE								FLASH
	01+5	01+6	02+5	02+6	03+7	03+8	04+7	04+8	
11	←	←	←	←	←	←	←	←	Y
21,22	R	R	G	G	R	R	R	R	Y
31	←	←	←	←	←	←	←	←	Y
41,42	R	R	R	R	R	R	G	G	Y
51	←	←	←	←	←	←	←	←	Y
61,62	R	G	R	G	R	R	R	R	Y
71	←	←	←	←	←	←	←	←	Y
81	R	R	R	R	R	G	G	R	Y
82	R	R	R	R	R	G	G	R	Y
P21,P22	DW	DW	W	W	DW	DW	DW	DRK	
P41,P42	DW	DW	DW	DW	DW	DW	W	DRK	
P61,P62	DW	W	DW	W	DW	DW	DW	DRK	
P81,P82	DW	DW	DW	DW	W	DW	W	DRK	

- 8-Phase Fully Actuated Isolated**
- NOTES**
- Refer to "Roadway Standard Drawings NCDOT" dated January 2012 and "Standard Specifications for Roads and Structures" dated January 2012.
 - Do not program signal for late night flashing operation unless otherwise directed by the Engineer.
 - Phase 1 and/or Phase 5 may be lagged.
 - Phase 3 and/or Phase 7 may be lagged.
 - Set all detector units to presence mode.
 - Omit "WALK" and flashing "DON'T WALK" with no pedestrian calls.
 - Program pedestrian heads to countdown the flashing "DON'T WALK" time only.
 - Thirty days after implementation of the revised signal operation, signs R3-5L, R3-5A, R3-6R, and/or orange flags may be removed at the discretion of the Regional Traffic Engineer.
 - The signal shall operate only in Alternative Phasing, with fully-protected left turn phases, until such time as is decided by the Division Traffic Engineer.



OASIS 2070 TIMING CHART

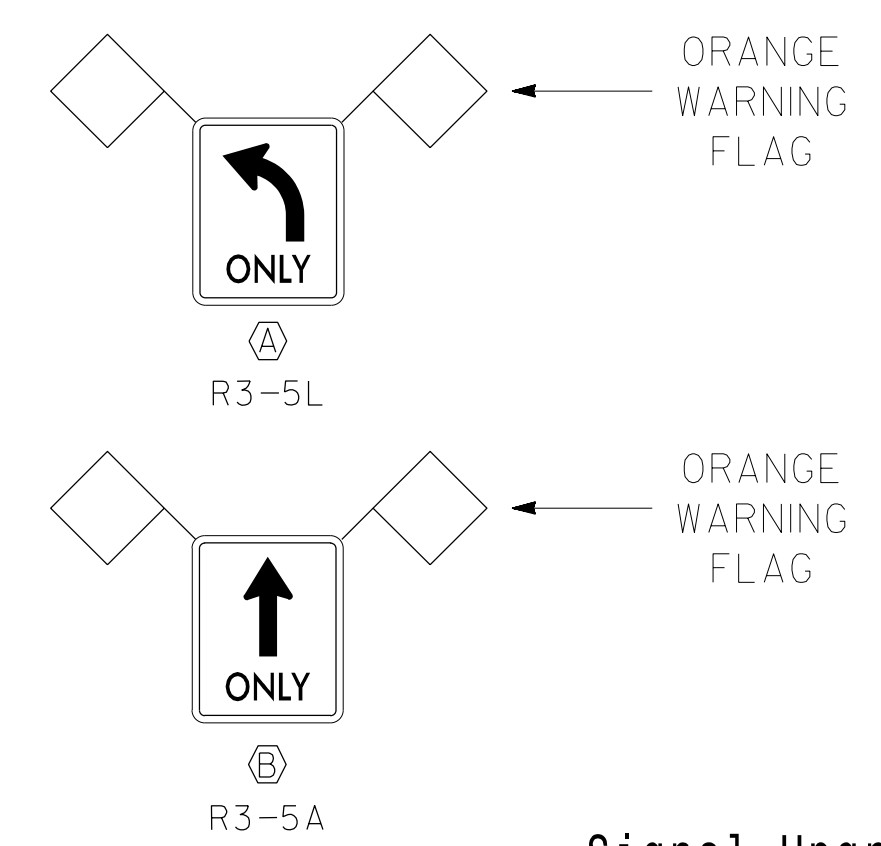
FEATURE	PHASE							
	1	2	3	4	5	6	7	8
Min Green 1 *	7	12	7	7	7	12	7	7
Extension 1 *	2.0	6.0	2.0	2.0	2.0	6.0	2.0	2.0
Max Green 1 *	20	50	20	30	20	50	20	30
Yellow Clearance	3.0	4.6	3.0	3.9	3.0	4.6	3.0	3.9
Red Clearance	3.2	0.0	3.5	2.6	3.3	2.0	3.2	2.6
Red Revert	2.0	2.0	2.0	2.0	2.0	2.0	2.0	2.0
Walk 1 *	-	4.0	-	4.0	-	4.0	-	4.0
Don't Walk 1	-	18	-	17	-	14	-	21
Seconds Per Actuation *	-	1.8	-	-	-	1.8	-	-
Max Variable Initial *	-	34	-	-	-	34	-	-
Time Before Reduction *	-	15	-	-	-	15	-	-
Time To Reduce *	-	30	-	-	-	30	-	-
Minimum Gap	-	3.0	-	-	-	3.0	-	-
Recall Mode	-	MIN RECALL	-	-	-	MIN RECALL	-	-
Vehicle Call Memory	-	YELLOW	-	-	-	YELLOW	-	-
Dual Entry	-	-	-	ON	-	-	-	ON
Simultaneous Gap	ON	ON	ON	ON	ON	ON	ON	ON



2070L LOOP & DETECTOR INSTALLATION CHART

LOOP	SIZE (FT)	DISTANCE FROM STOPBAR (FT)	TURNS	NEW LOOP	DETECTOR PROGRAMMING							
					PHASE	CALLING	EXTENSION	STRETCH TIME	DELAY TIME	SYSTEM LOOP	NEW CARD	
1A	6X40	0	2-4-2	Y	1	Y	Y	-	-	15*	-	Y
1B	6X40	+5	2-4-2	Y	1	Y	Y	-	-	15	-	Y
2A	6X6	300	5	Y	2	Y	Y	-	-	-	-	Y
2B	6X6	300	5	Y	2	Y	Y	-	-	-	-	Y
3A	6X40	0	2-4-2	Y	3	Y	Y	-	-	15*	-	Y
4A	6X40	0	2-4-2	Y	4	Y	Y	-	-	5	-	Y
5A	6X40	0	2-4-2	Y	5	Y	Y	-	-	15*	-	Y
6A	6X6	300	5	Y	6	Y	Y	-	-	-	-	Y
6B	6X6	300	5	Y	6	Y	Y	-	-	-	-	Y
7A	6X40	0	2-4-2	Y	7	Y	Y	-	-	15*	-	Y
8A	6X40	0	2-4-2	Y	8	Y	Y	-	-	3	-	Y

* Reduce Delay Time to 3 Sec During Alternative Phasing Operation.
Disable Phase Call For Loop(s) During Alternative Phasing Operation.



Signal Upgrade

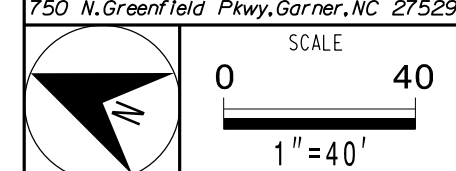
Michael Baker INTERNATIONAL
8000 Regency Parkway, Suite 600
Cary, North Carolina 27518
Phone: 919-463-5488
NC License No.: F-1084
MBAKERINTL.COM

Prepared in the Offices of:
TRANSPORTATION MOBILITY AND SAFETY DIVISION
DEPARTMENT OF TRANSPORTATION
SIGNAL DESIGN SECTION
750 N. Greenfield Pkwy, Garner, NC 27529

NC 42/NC 58 (Ward Boulevard) at NC 42/SR 1163 (Herring Avenue)
Division 4 Wilson County Wilson
PLAN DATE: July 2017 REVIEWED BY: W M Ruhssam
PREPARED BY: K M Cory REVIEWED BY:

DOCUMENT NOT CONSIDERED FINAL UNLESS ALL SIGNATURES COMPLETED

SEAL
KELLY M. CORY
REGISTERED PROFESSIONAL ENGINEER
038970
8/4/2017



04-AUG-2017 11:02
X:\PROJ\FACTS\15-301\TRF\fact\signal\sig\5935_S10_08.dgn
KMCORY AT NCDOT/CORRY

* These values may be field adjusted. Do not adjust Min Green and Extension times for phases 2 and 6 lower than what is shown. Min Green for all other phases should not be lower than 4 seconds.