
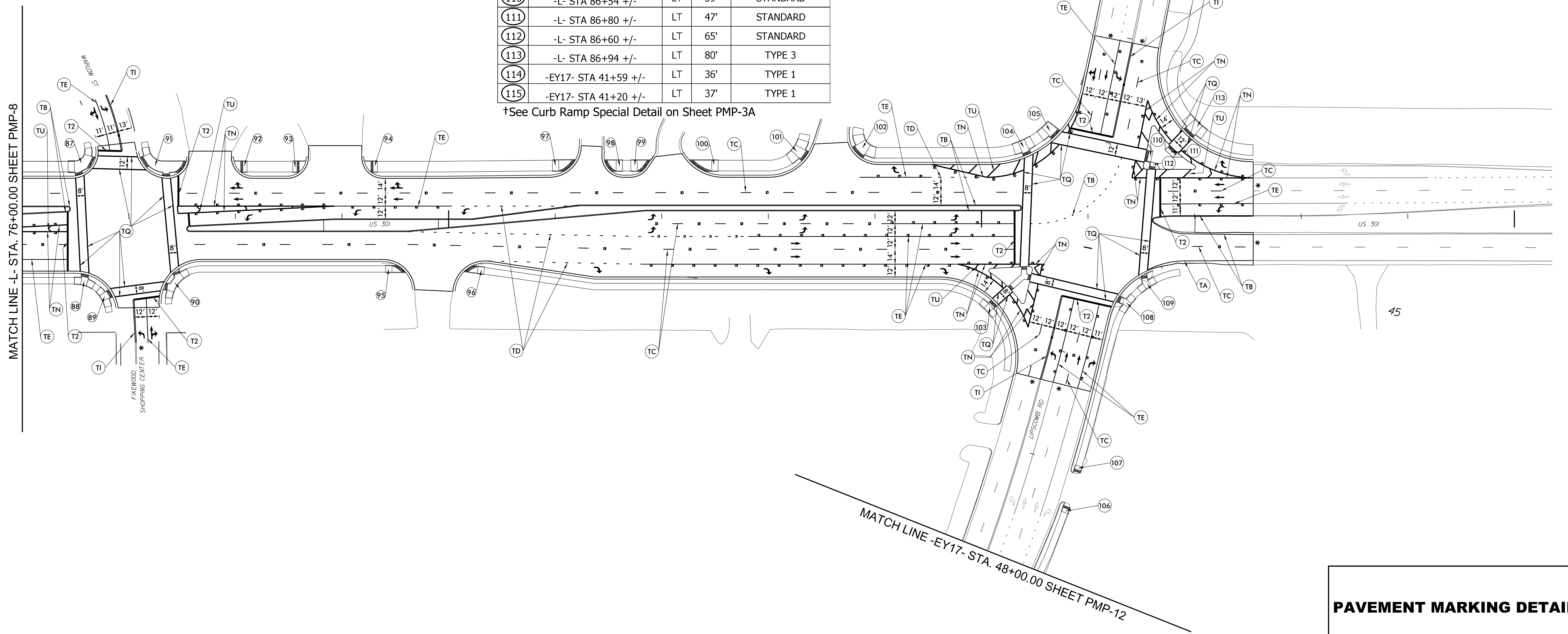


PROJECT REFERENCE NO.	SHEET NO.
U-5935	PMP-9
APPROVED: <i>Kelly M. Cory</i> <small>DocuSigned by: E2F270FB1C142E...</small> DATE: 7/12/2017	
	
DOCUMENT NOT CONSIDERED FINAL UNLESS ALL SIGNATURES COMPLETED	
Michael Baker INTERNATIONAL	

	CURB RAMP STATION	SIDE	OFFSET	CURB RAMP TYPE
87	-L- STA 62+89 +/-	LT	42'	TYPE 3A†
88	-L- STA 76+59 +/-	RT	52'	TYPE 3
89	-L- STA 76+83 +/-	RT	70'	TYPE 3
90	-L- STA 77+44 +/-	RT	50'	TYPE 3
91	-L- STA 77+35 +/-	LT	40'	TYPE 3A†/TYPE 1
92	-L- STA 78+07 +/-	LT	49'	TYPE 1
93	-L- STA 78+57 +/-	LT	49'	TYPE 1
94	-L- STA 79+30 +/-	LT	49'	TYPE 1
95	-L- STA 79+56 +/-	RT	47'	TYPE 1
96	-L- STA 80+18 +/-	RT	47'	TYPE 1
97	-L- STA 80+14 +/-	LT	48'	TYPE 1
98	-L- STA 81+14 +/-	LT	48'	TYPE 1
99	-L- STA 81+85 +/-	LT	48'	TYPE 1
100	-L- STA 82+33 +/-	LT	48'	TYPE 1
101	-L- STA 83+31 +/-	LT	54'	TYPE 3
102	-L- STA 83+87 +/-	LT	58'	TYPE 3
103	-L- STA 85+14 +/-	RT	77'	TYPE 3
104	-L- STA 85+73 +/-	LT	56'	TYPE 3
105	-L- STA 85+70 +/-	LT	78'	TYPE 1A
106	-EY17- STA 47+35 +/-	LT	49'	TYPE 1
107	-EY17- STA 47+03 +/-	LT	48'	TYPE 1
108	-EY17- STA 45+41 +/-	LT	42'	TYPE 3
109	-L- STA 86+52 +/-	RT	54'	TYPE 3
110	-L- STA 86+54 +/-	LT	59'	STANDARD
111	-L- STA 86+80 +/-	LT	47'	STANDARD
112	-L- STA 86+60 +/-	LT	65'	STANDARD
113	-L- STA 86+94 +/-	LT	80'	TYPE 3
114	-EY17- STA 41+59 +/-	LT	36'	TYPE 1
115	-EY17- STA 41+20 +/-	LT	37'	TYPE 1

†See Curb Ramp Special Detail on Sheet PMP-3A



* TIE TO EXISTING

12-JUL-2017 13:46
 X:\Projects\US_301\Traffic\Pavement Marking Plans\U-5935_PMP_psh_09.dgn
 KMCOR\AT_NORC\CORY

PAVEMENT MARKING DETAIL