

**This electronic collection of documents is provided  
for the convenience of the user  
and is Not a Certified Document –**

**The documents contained herein were originally issued  
and sealed by the individuals whose names and license  
numbers appear on each page, on the dates appearing  
with their signature on that page.**

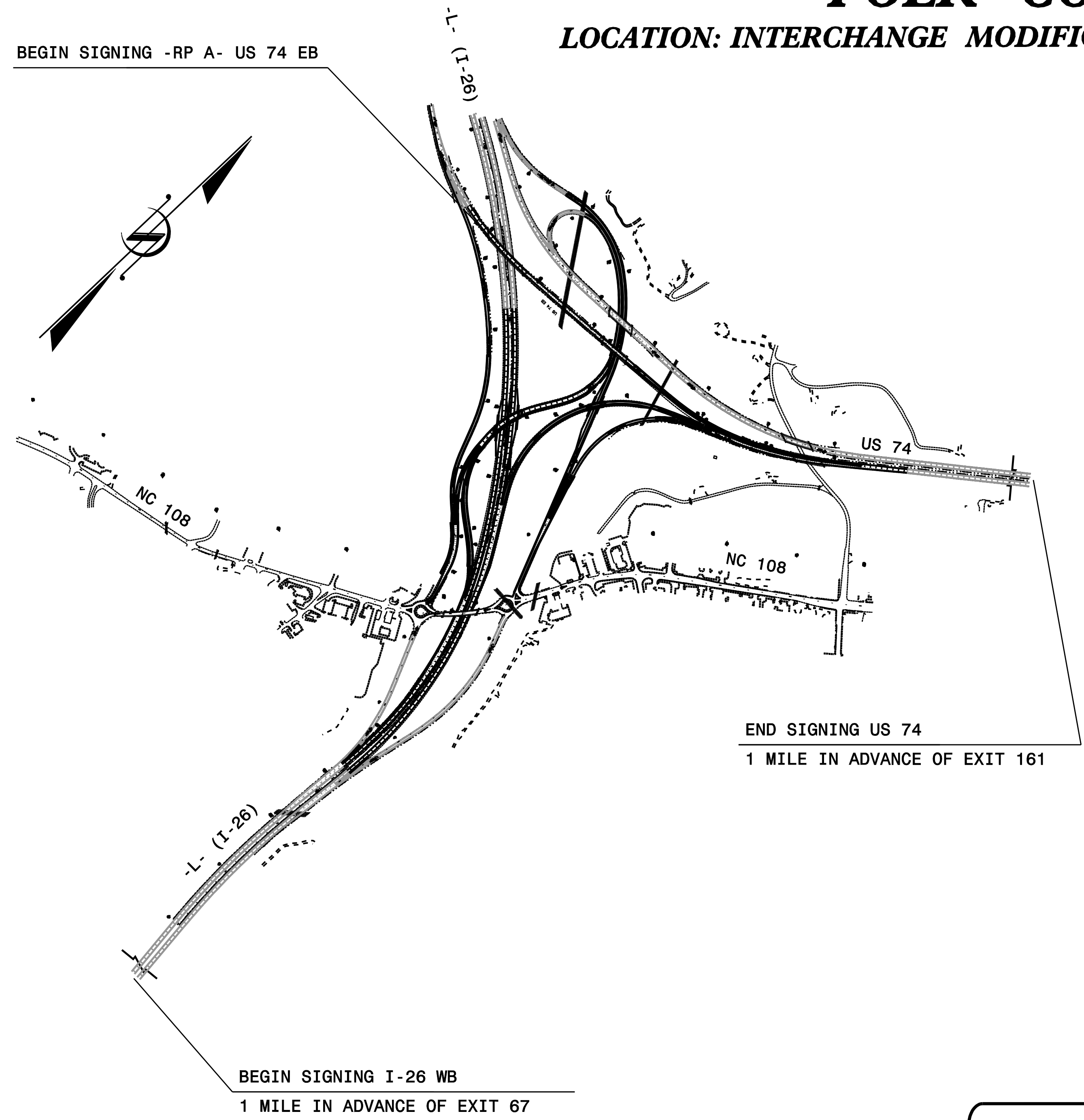
**This file or an individual page  
shall not be considered a certified document.**

**STATE OF NORTH CAROLINA  
DEPARTMENT OF TRANSPORTATION**

**SIGNING PLAN  
POLK COUNTY**

**LOCATION: INTERCHANGE MODIFICATION AT I-26 AND US 74**

**CONTRACT: C204039 T.I.P.: I-4729A**



**INDEX**

SHEET NO.	DESCRIPTION
SIGN-1A	TITLE SHEET
SIGN-1B	SUMMARY OF QUANTITIES, ROADWAY STANDARDS AND NOTES
SIGN-2A	SUPPORT INFORMATION
SIGN-2B AND SIGN-2C	REVISED ROADWAY STANDARD DRAWING 903D10
SIGN-3A	TYPE E SIGNS
SIGN-3B	TYPE F SIGNS
SIGN-4A THRU 4G	SIGN DESIGNS
SIGN-5A THRU 5C	PROPOSED STRUCTURE LINE ASSEMBLIES
SIGN-5D	EXISTING STRUCTURE LINE ASSEMBLY
SIGN-6A THRU 6D	SIGNING PLAN SHEETS

**100% SUBMITTAL  
DATE: AUGUST 4, 2017**

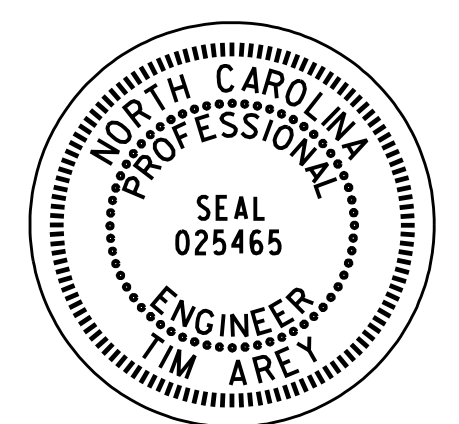
APPROVED BY: Tim Arey  
DATE: 8/7/2017

PLAN PREPARED BY:	
<u>Tim Arey, PE</u>	PROJECT ENGINEER
<u>Susan Kunz</u>	SIGNING PROJECT MANAGER
<u>Larry Ashley</u>	SIGNING DESIGN ENGINEER

Prepared In the Office of:

**PROGRESSIVE  
DESIGN GROUP, INC.**

ENGINEERS • CONSULTANTS



DOCUMENT NOT CONSIDERED FINAL  
UNLESS ALL SIGNATURES COMPLETED

## GENERAL NOTES

- . SIGNS FURNISHED BY STATE
- . CONFIRM IN WRITING AT LEAST 4 MONTHS IN ADVANCE, THE ACTUAL DATE THE DEPARTMENT FURNISHED SIGNS WILL BE REQUIRED.
- . ALL TYPE 'D' SIGNS SHALL BE MOUNTED ON TWO U-CHANNEL POSTS UNLESS OTHERWISE INDICATED ON THE PLANS.
- . IF REMOVAL OR RELOCATION OF SIGNS ON PRIVATE STREET (NON-STATE MAINTAINED) IS REQUIRED DUE TO CONSTRUCTION, THE CONTRACTOR SHALL INFORM THE ENGINEER. THE WORK WILL BE COMPLETED BY OTHERS.
- . WHEN NOT STATIONED OR DIMENSIONED ON PLANS, ALL 'E' AND 'F' SIGNS SHALL BE FIELD LOCATED BY THE ENGINEER
- . SOME EXISTING WARNING SIGNS ARE NOT SHOWN IN PLANS. WHEN REPLACEMENT SIGNS ARE SHOWN IN PLANS, OR IF SIGNS ARE NOT RELEVANT FOR NEW PATTERN, CONTRACTOR SHALL DISPOSE OF THE EXISTING SIGNS.
- . WHEN EXISTING SIGNS ARE REMOVED AND INSTALLED ON NEW SUPPORTS, THE RE-ERECTION SHALL IMMEDIATELY FOLLOW THE REMOVAL.
- . THE BACKGROUND FOR TYPE E & F SIGNS SHALL BE TYPE C REFLECTIVE SHEETING.
- . DO NOT BEGIN FABRICATION FOR TYPES A & B SIGNS MOUNTED ON OVERHEAD STRUCTURES OR STEEL SUPPORTS UNTIL "S" DIMENSIONS HAVE BEEN FIELD VERIFIED.
- . SEE ROADWAY PLANS FOR GUARD/GUIDE RAIL DETAILS.

<i>PLAN PREPARED BY:</i>	<b>TIP NO.</b> I-4729A	<b>SHEET NO.</b> SIGN-1B
<b>PROGRESSIVE</b> DESIGN GROUP, INC.		
<b>ENGINEERS • CONSULTANTS</b>		
APPROVED: <i>Ann Gray</i>		
DATE: 8/7/2017		
SEAL		



DOCUMENT NOT CONSIDERED FINAL  
UNLESS ALL SIGNATURES COMPLETED

## PROJECT NOTES

- 1 DISPOSE OF SIGN SYSTEM, U-CHANNEL
- 2 DISPOSE OF SIGN SYSTEM, STEEL BEAM
- 3 DISPOSE OF SUPPORT, STEEL BEAM
- 4 RELOCATE SIGN TYPE A (GROUND MOUNTED)
- 5 DISPOSE OF SIGN, TYPE A/B (OVERHEAD)
- 6 DISPOSE OF SIGN, TYPE A/B (GROUND MOUNTED)
- 7 DISPOSE OF SIGN SYSTEM, OVERHEAD

## SUMMARY OF QUANTITIES

ITEM NO.	DESC. NO.	SECT. NO.	ITEM DESCRIPTION	QUANTITY	UNIT
4048000000		902	REINFORCED CONCRETE SIGN FOUNDATION	2	C.Y.
4054000000		902	PLAIN CONCRETE SIGN FOUNDATION	2	C.Y.
4057000000		SP	OVERHEAD FOOTING	59	C.Y.
4060000000		903	SUPPORTS, BREAKAWAY STEEL BEAM	3221	LB.
4066000000		903	SUPPORTS, SIMPLE STEEL BEAM	237	LB.
4072000000		903	SUPPORTS, 3 LB STEEL U-CHANNEL	1000	L.F.
4082100000		SP	SUPPORTS, OVERHEAD SIGN STRUCTURE AT STA. 11+00 -RP E-	1	L.S.
4082100000		SP	SUPPORTS, OVERHEAD SIGN STRUCTURE AT STA. 19+00 -RP F-	1	L.S.
4082100000		SP	SUPPORTS, OVERHEAD SIGN STRUCTURE AT STA. 10+00 -RP G REV-	1	L.S.
4109000000		904	SIGN ERECTION, TYPE A (OVERHEAD)	2	EA.
4109000000		904	SIGN ERECTION, TYPE B (OVERHEAD)	2	EA.
4096000000		904	SIGN ERECTION, TYPE D	1	EA.
4102000000		904	SIGN ERECTION, TYPE E	42	EA.
4108000000		904	SIGN ERECTION, TYPE F	4	EA.
4110000000		904	SIGN ERECTION, TYPE A (GROUND MOUNTED)	9	EA.
4110000000		904	SIGN ERECTION, TYPE B (GROUND MOUNTED)	8	EA.
4116100000		904	SIGN ERECTION, RELOCATE TYPE A (GROUND MOUNTED)	3	EA.
4138000000		907	DISPOSAL OF SUPPORT, STEEL BEAM	3	EA.
4149000000		907	DISPOSAL OF SIGN SYSTEM, OVERHEAD	1	EA.
4152000000		907	DISPOSAL OF SIGN SYSTEM, STEEL BEAM	6	EA.
4155000000		907	DISPOSAL OF SIGN SYSTEM, U-CHANNEL	40	EA.
4234000000		907	DISPOSAL OF SIGN, A OR B (OVERHEAD)	2	EA.
4236000000		907	DISPOSAL OF SIGN, A OR B (GROUND MOUNTED)	5	EA.

## ROADWAY STANDARD DRAWING

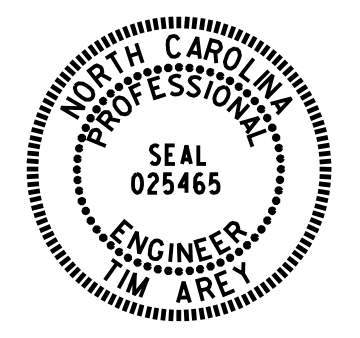
THE FOLLOWING ROADWAY STANDARDS AS APPEAR IN "ROADWAY STANDARD DRAWINGS" - PROJECT SERVICES UNIT - N.C. DEPARTMENT OF TRANSPORTATION - RALEIGH, N.C., DATED JANUARY 2012 ARE APPLICABLE TO THIS PROJECT AND BY REFERENCE HEREBY ARE CONSIDERED A PART OF THESE PLANS:

STD. NO.	TITLE
901.10	TYPE 'A' SIGNS
901.50	ARROWS AND SHIELDS
901.70	SIGN STRINGERS AND SUPPORT SPACING
901.80	SIGN MOUNTING DETAILS - FOR TYPE A AND TYPE B SIGNS
903.10	GROUND MOUNTED SIGN SUPPORTS (SHEET 3 OF 3)
904.10	ORIENTATION OF GROUND MOUNTED SIGNS
904.20	SECONDARY SIGN MOUNTING
904.30	SUPPLEMENTAL SIGN MOUNTING
904.50	MOUNTING OF TYPE 'D', 'E' AND 'F' SIGNS ON 'U' CHANNEL POSTS

APPROVED: *Jim Arey*

DATE: 8/7/2017

SEAL



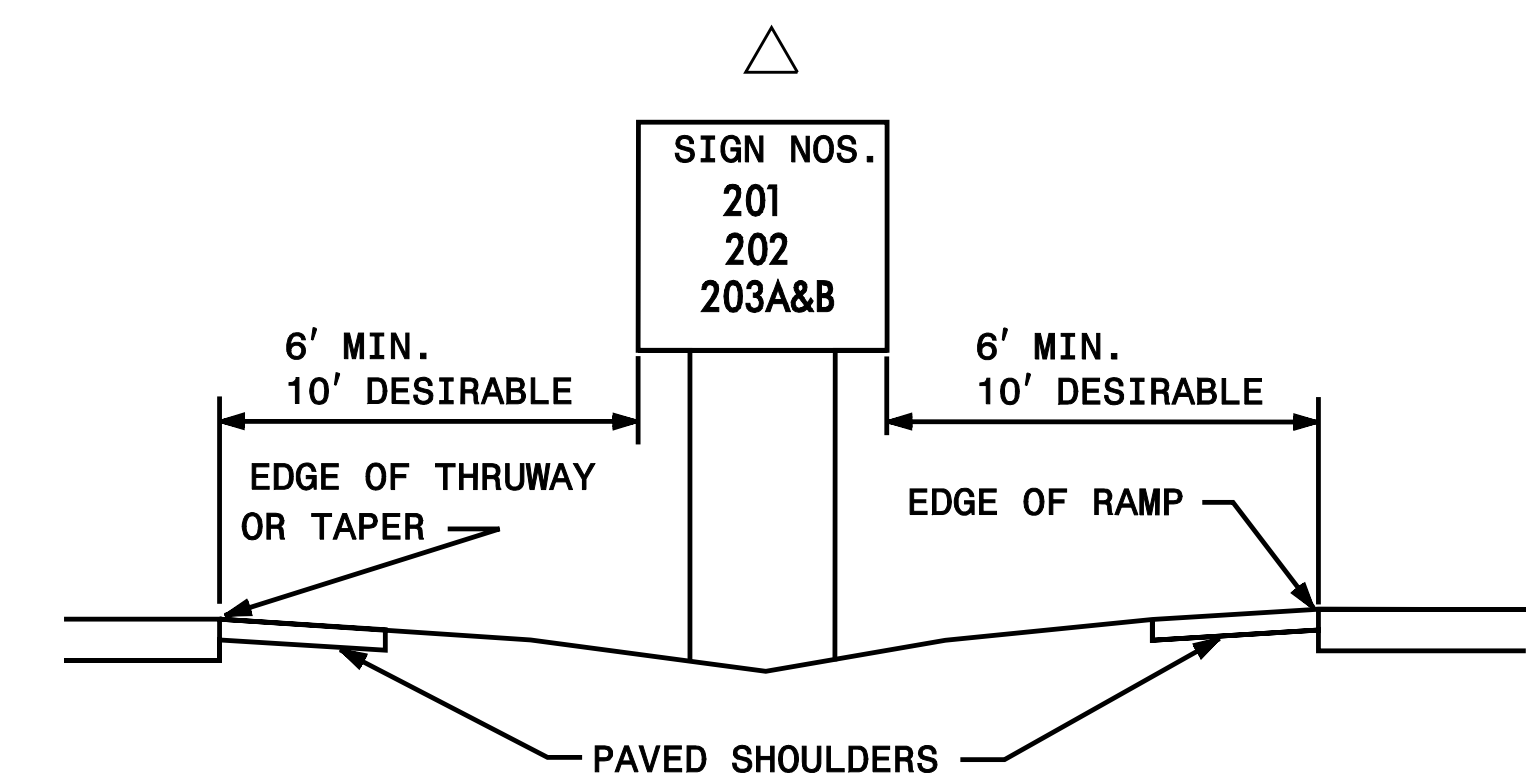
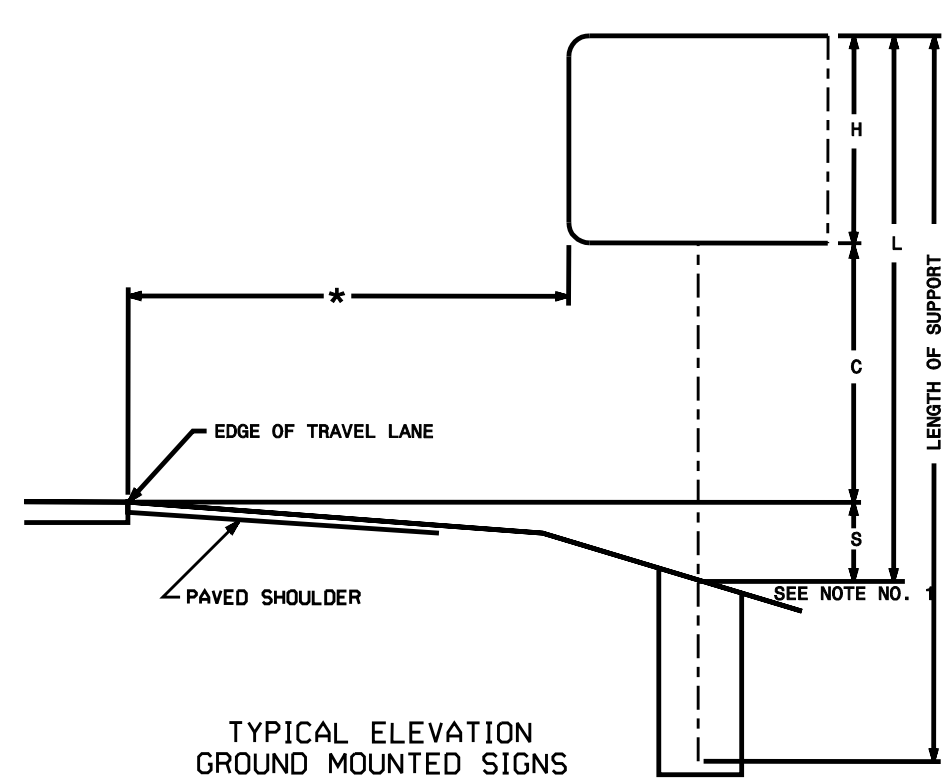
DOCUMENT NOT CONSIDERED FINAL  
 UNLESS ALL SIGNATURES COMPLETED

Version: 3.0 Posted: 9/14/2016

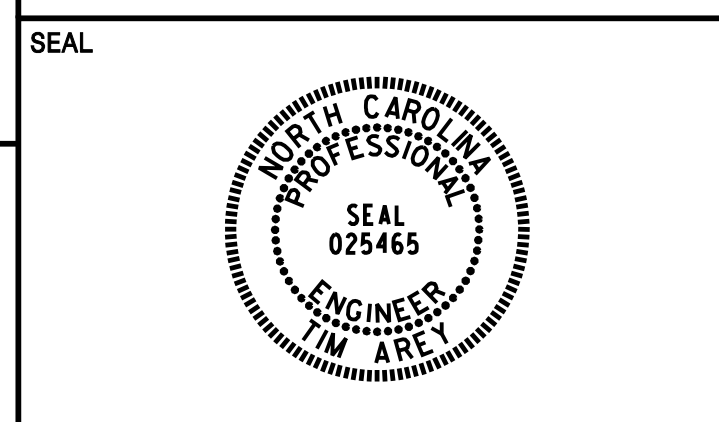
NUMBER	SIGN			ROADWAY STATION	NUMBER OF SUPPORTS	BEAM SECTION	SUPPORT TYPE BA or S	OMNI COUPLER	ATTACHMENT METHOD	MOUNTING METHOD	HORIZONTAL CLEARANCE* (ft.)	SUPPORT SPACING	LENGTH (ft)			LEFT SUPPORT (ft)			CENTER SUPPORT (ft)			RIGHT SUPPORT (ft)			SUPPORT WEIGHTS		FOOTINGS				FIELD VERIFIED SEE NOTE 2 (mm/dd/yy)										
	TYPE	SIZE (in.)											SNS HT	MTG HT	EMBED-MENT	S	L	LENGTH	S	L	LENGTH	S	L	LENGTH	B/A (lbs.)	SIMPLE (lbs.)	DIAMETER (ft.)	DEPTH (ft.)	REINFORCED (c.y.)	PLAIN (c.y.)											
		w	x																													h									
104A	B	114	x	30	-EL- 36+00	2	W10x26	BA	N/A	1-R	N/A	30.00	8.79	13.00	7.00	4.5	5.00	25.00	29.50	0.00	0.00	0.00	7.00	27.00	31.50	1866.00	0	2.5	5	1.82	0.00										
104B	A	180	x	156																																					
201	A	78	x	60	I-26 WB	2	S3x5.7	BA	N/A	N/A	N/A	Δ	3.81	5.00	7.00	2.5	0.50	12.50	15.00	0.00	0.00	0.00	0.50	12.50	15.00	207.00	0	1.0	3	0.00	0.17										
202	A	78	x	60	I-26 WB	2	S3x5.7	BA	N/A	N/A	N/A	Δ	3.81	5.00	7.00	2.5	0.50	12.50	15.00	0.00	0.00	0.00	0.50	12.50	15.00	207.00	0	1.0	3	0.00	0.17										
203A	A	96	x	60	US 74	2	S4x7.7	BA	N/A	N/A	N/A	Δ	4.69	7.00	7.00	3.0	0.50	14.50	17.50	0.00	0.00	0.00	0.50	14.50	17.50	309.50	0	1.0	3.5	0.00	0.20										
203B	B	72	x	24																																					
901	A	90	x	84	-W CONN REV-40+40 LT	2	S4x7.7	BA	N/A	N/A	N/A	16.00	4.40	7.00	7.00	3.0	1.75	15.75	18.75	0.00	0.00	0.00	1.00	15.00	18.00	322.98	0	1.0	3.5	0.00	0.20										
902	A	90	x	72	-RP WC- 19+50 LT	2	S4x7.7	BA	N/A	N/A	N/A	16.00	4.40	6.00	7.00	3.0	1.75	14.75	17.75	0.00	0.00	0.00	1.00	14.00	17.00	307.58	0	1.0	3.5	0.00	0.20										
903	A	90	x	72	-RP WC -19+50 RT	2	S4x7.7	S	N/A	N/A	N/A	16.00	4.40	6.00	7.00	3.0	0.37	13.37	16.37	0.00	0.00	0.00	-1.67	11.33	14.33	0.00	236.39	1.0	3.5	0.00	0.20										
																	TOTAL	3220.05		236.39		TOTAL		1.82		TOTAL		1.16													
																	USE:	3221.00		237.00		TOTAL		2.00		TOTAL		2.00													

**NOTES**

- DIMENSION "S" REPRESENTS AN INCREASE (+), OR A DECREASE (-) IN POLE LENGTH, RELATIVE TO THE ELEVATION OF THE EDGE OF PAVEMENT.
- FIELD VERIFICATIONS SHALL BE REQUIRED FOR ALL SUPPORTS, SEE (\*) ARTICLE 903-3. FABRICATORS SHALL BE AISC CERTIFIED IN CATEGORY 1, SEE (\*) ARTICLE 1072-1. (\*) = N.C.D.O.T. STANDARD SPECIFICATIONS FOR ROADS AND STRUCTURES.
- PLAN LOCATIONS FOR EXISTING UTILITIES ARE BASED ON THE BEST AVAILABLE INFORMATION AND, THEREFORE MAY NOT BE PRECISELY ACCURATE. THEREFORE, IT IS INCUMBENT UPON THE CONTRACTOR TO DETERMINE THE EXACT LOCATION OF UTILITIES BEFORE BEGINNING WORK IN A LOCATION.
- IF GROUNDWATER IS ENCOUNTERED AT A DEPTH SHALLOWER THAN 7 FEET, THE SIGN FOUNDATION MUST BE REDESIGNED BASED UPON THE ACTUAL FIELD CONDITIONS. THE FOUNDATION DESIGN DOES NOT APPLY TO VERY SOFT OR LOOSE SOIL, MUCK, WEATHERED ROCK, OR HARD ROCK.



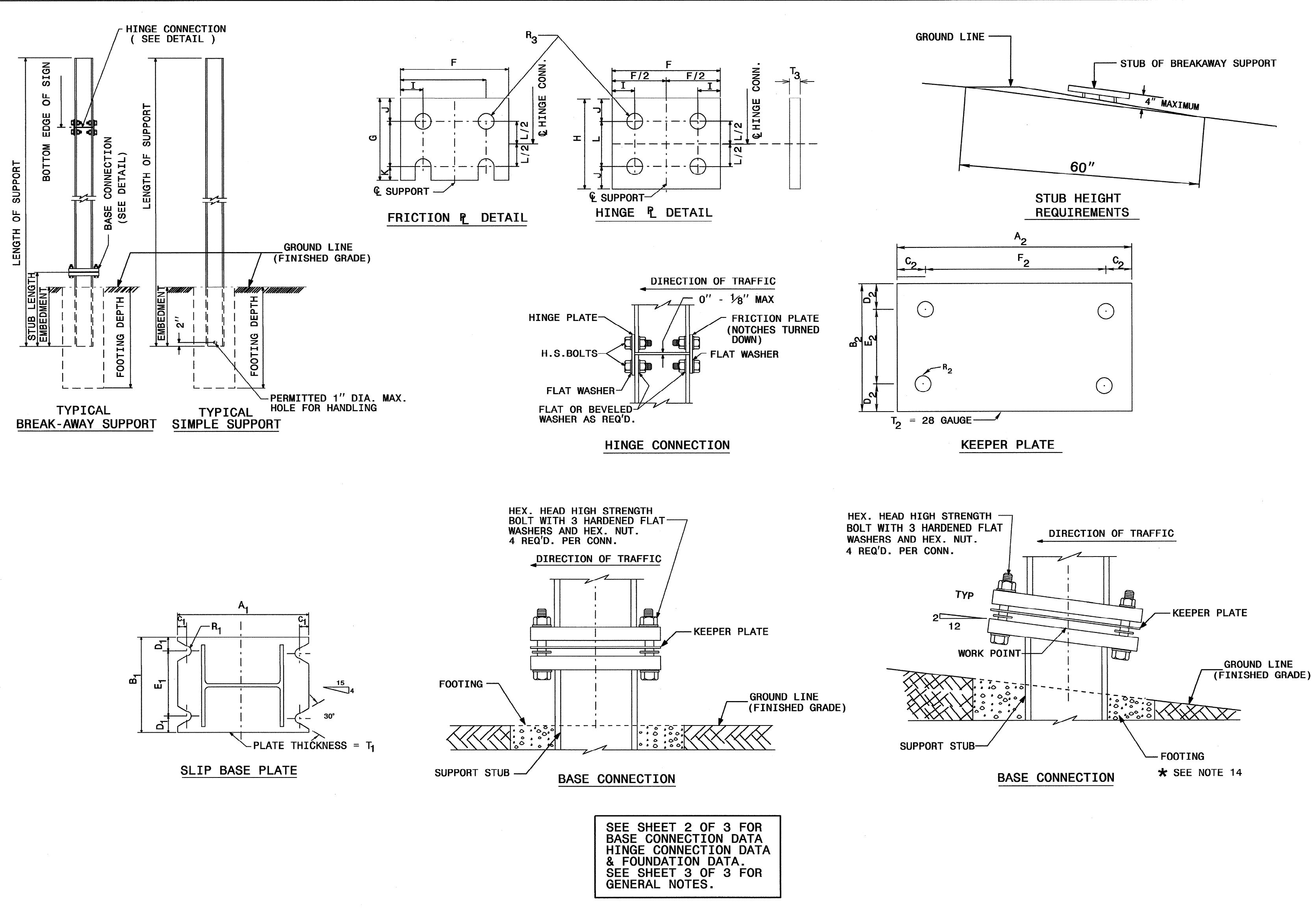
**SIGNING PLANS**  
 GROUND MOUNTED TYPE A & B SIGNS



DOCUMENT NOT CONSIDERED FINAL  
 UNLESS ALL SIGNATURES COMPLETED

STATE OF NORTH CAROLINA  
 DEPT. OF TRANSPORTATION  
 DIVISION OF HIGHWAYS  
 RALEIGH, N.C.

ENGLISH STANDARD DRAWING FOR  
**GROUND MOUNTED SIGN SUPPORTS**  
 SHEET 1 OF 3  
**903D10**

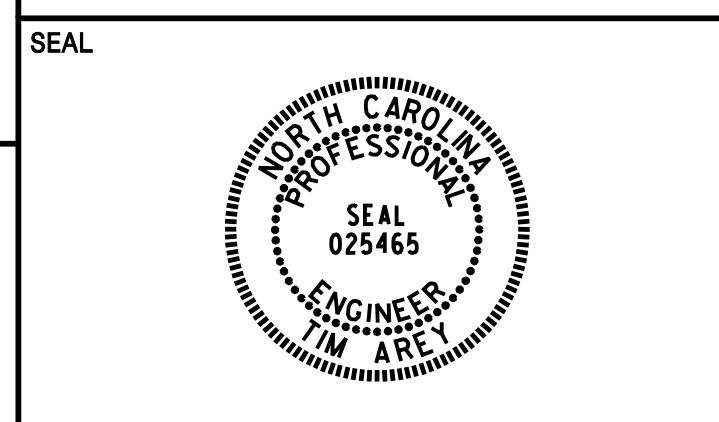


STATE OF NORTH CAROLINA  
 DEPT. OF TRANSPORTATION  
 DIVISION OF HIGHWAYS  
 RALEIGH, N.C.

ENGLISH STANDARD DRAWING FOR  
**GROUND MOUNTED SIGN SUPPORTS**  
 SHEET 1 OF 3  
**903D10**

26-JUL-2015 08:37 S:\SBU\Standards Group NEW Standards and Drawings\Drawings\2012 Standard Dvgs\010\_sgn\_sht101gm\_support\_Revise\_7-3-13.dgn

REVISED SIGNING  
 ROADWAY STANDARD DRAWING



DOCUMENT NOT CONSIDERED FINAL  
 UNLESS ALL SIGNATURES COMPLETED

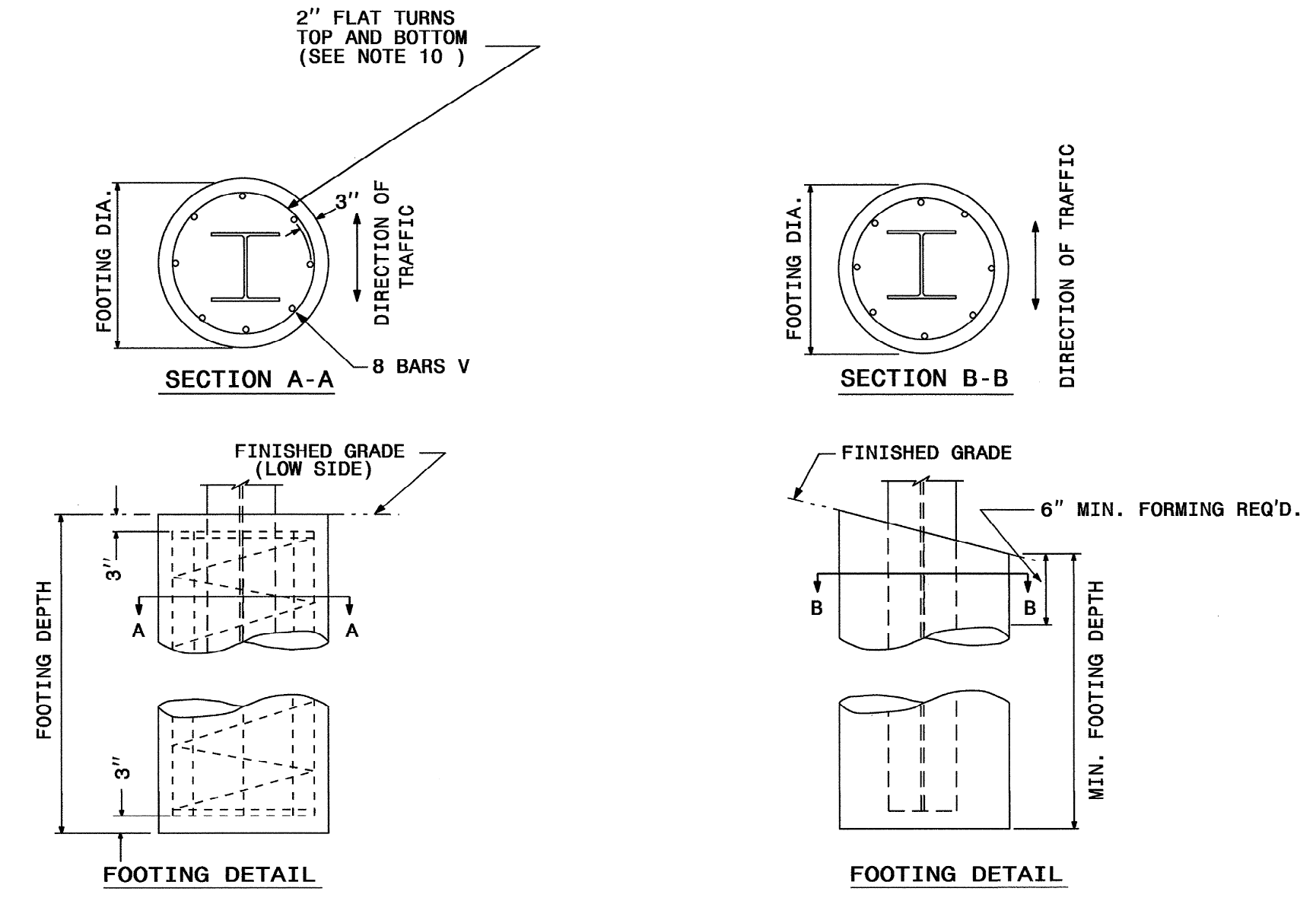
TIP NO. SHEET NO.  
 APPROVED: *[Signature]*  
 DATE: 7/26/13  
 SEAL

STATE OF NORTH CAROLINA  
 DEPT. OF TRANSPORTATION  
 DIVISION OF HIGHWAYS  
 RALEIGH, N.C.

ENGLISH DETAIL DRAWING FOR  
**GROUND MOUNTED SIGN SUPPORTS**

SHEET 2 OF 3  
**903D10**

BEAM SHAPE	SLIP BASE PLATE DATA							KEEPER PLATE DATA							HINGE CONNECTION DATA							BREAK AWAY SUPPORT WEIGHT CONSTANT LBS.				
	BOLT SIZE	A <sub>1</sub>	B <sub>1</sub>	C <sub>1</sub>	D <sub>1</sub>	E <sub>1</sub>	T <sub>1</sub>	R <sub>1</sub>	A <sub>2</sub>	B <sub>2</sub>	C <sub>2</sub>	D <sub>2</sub>	E <sub>2</sub>	R <sub>2</sub>	T <sub>2</sub>	BOLT SIZE	F	G	H	I	J		K	L	R <sub>3</sub>	T <sub>3</sub>
S3X5.7	1/2"DIA. X 3/4"	7"	4"	1"	3/4"	2 1/2"	1"	9/32"	7"	4"	1"	3/4"	2 1/2"	9/32"	28 GAUGE	1/2"DIA. X 1 3/4"	2 1/4"	3 1/2"	4"	1/2"	1"	1/2"	2"	9/32"	3/8"	18
S4X7.7	1/2"DIA. X 3/4"	8"	4"	1"	3/4"	2 1/2"	1"	9/32"	8"	4"	1"	3/4"	2 1/2"	9/32"	28 GAUGE	1/2"DIA. X 1 3/4"	2 5/8"	3 1/2"	4"	1/2"	1"	1/2"	2"	9/32"	3/8"	20
W6X9	1/2"DIA. X 3/4"	10"	5"	1"	3/4"	3 1/2"	1"	9/32"	10"	5"	1"	3/4"	3 1/2"	9/32"	28 GAUGE	1/2"DIA. X 1 3/4"	4"	3 1/2"	4"	3/4"	1"	1/2"	2"	9/32"	3/8"	32
W6X12	5/8"DIA. X 4"	11"	5"	1 1/4"	7/8"	3 1/4"	1 1/4"	1 1/32"	11"	5"	1 1/4"	7/8"	3 1/4"	1 1/32"	28 GAUGE	5/8"DIA. X 2"	4"	4"	4 1/2"	3 1/4"	1 1/8"	5/8"	2 1/4"	1 1/32"	3/8"	39
W6X16	5/8"DIA. X 4 1/2"	12"	6"	1 1/4"	7/8"	4 1/4"	1 1/2"	1 1/32"	12"	6"	1 1/4"	7/8"	4 1/4"	1 1/32"	28 GAUGE	5/8"DIA. X 2 1/4"	4"	4"	4 1/2"	3 1/4"	1 1/8"	5/8"	2 1/4"	1 1/32"	1/2"	47
W8X18	5/8"DIA. X 4 1/2"	13 1/2"	6 1/2"	1 1/4"	7/8"	4 3/4"	1 1/2"	1 1/32"	13 1/2"	6 1/2"	1 1/4"	7/8"	4 3/4"	1 1/32"	28 GAUGE	5/8"DIA. X 2 1/4"	5 1/4"	4"	4 1/2"	1"	1 1/8"	5/8"	2 1/4"	1 1/32"	1/2"	70
W8X21	3/4"DIA. X 4 1/2"	14"	7"	1 1/2"	1"	5"	1 1/2"	1 1/32"	14"	7"	1 1/2"	1"	5"	1 1/32"	28 GAUGE	3/4"DIA. X 2 1/2"	5 1/4"	6"	7"	1"	1 3/4"	3/4"	3 1/2"	1 1/32"	1/2"	73
W10X22	3/4"DIA. X 4 1/2"	16"	8"	1 1/2"	1"	6"	1 1/2"	1 1/32"	16"	8"	1 1/2"	1"	6"	1 1/32"	28 GAUGE	3/4"DIA. X 2 1/2"	5 3/4"	6"	7"	1"	1 3/4"	3/4"	3 1/2"	1 1/32"	1/2"	119
W10X26	3/4"DIA. X 5 1/2"	16 1/2"	8"	1 1/2"	1"	6"	1 3/4"	1 1/32"	16 1/2"	8"	1 1/2"	1"	6"	1 1/32"	28 GAUGE	3/4"DIA. X 2 3/4"	5 3/4"	6"	7"	1"	1 3/4"	3/4"	3 1/2"	1 1/32"	5/8"	140
W12X26	3/4"DIA. X 5 1/2"	18 1/2"	9"	1 1/2"	1"	7"	1 3/4"	1 1/32"	18 1/2"	9"	1 1/2"	1"	7"	1 1/32"	28 GAUGE	3/4"DIA. X 2 3/4"	6 1/2"	6"	7"	1"	1 3/4"	3/4"	3 1/2"	1 1/32"	5/8"	176
W14X30	1"DIA. X 6"	22"	9"	2"	1 1/2"	6"	2"	1 1/32"	22"	9"	2"	1 1/2"	6"	1 1/32"	28 GAUGE	1"DIA. X 3"	6 3/4"	7"	8"	1 1/4"	2"	1"	4"	1 1/32"	5/8"	205
W16X31	1"DIA. X 6"	24"	9"	2"	1 1/2"	6"	2"	1 1/32"	24"	9"	2"	1 1/2"	6"	1 1/32"	28 GAUGE	1"DIA. X 3"	5 1/2"	7"	8"	1 1/4"	2"	1"	4"	1 1/32"	3/4"	223
W18X35	1"DIA. X 6"	25"	9"	2"	1 1/2"	6"	2"	1 1/32"	25"	9"	2"	1 1/2"	6"	1 1/32"	28 GAUGE	1"DIA. X 3"	6"	7"	8"	1 1/4"	2"	1"	4"	1 1/32"	3/4"	243
W18X40	1"DIA. X 6 1/2"	26"	9"	2"	1 1/2"	6"	2 1/4"	1 1/32"	26"	9"	2"	1 1/2"	6"	1 1/32"	28 GAUGE	1"DIA. X 3 1/2"	6"	7"	8"	1 1/4"	2"	1"	4"	1 1/32"	7/8"	278
W21X44	1"DIA. X 7"	29"	9"	2"	1 1/2"	6"	2 1/2"	1 1/32"	29"	9"	2"	1 1/2"	6"	1 1/32"	28 GAUGE	1"DIA. X 3 1/2"	6 1/2"	7"	8"	1 1/4"	2"	1"	4"	1 1/32"	7/8"	310



FOUNDATION DATA *		
FOOTING DIAMETER	REINFORCEMENT	SPIRAL BAR
1'-6"	8 # 6 BARS	#3 BAR, 6" PITCH
2'	8 # 7 BARS	#3 BAR, 6" PITCH
2'-6"	8 # 9 BARS	#3 BAR, 6" PITCH
3'	8 # 11 BARS	#3 BAR, 6" PITCH
3'-6"	8 # 12 BARS	#3 BAR, 6" PITCH
4'	8 # 14 BARS	#3 BAR, 6" PITCH

\* FOUNDATION DIMENSIONS ARE SHOWN IN PLANS

STATE OF NORTH CAROLINA  
 DEPT. OF TRANSPORTATION  
 DIVISION OF HIGHWAYS  
 RALEIGH, N.C.

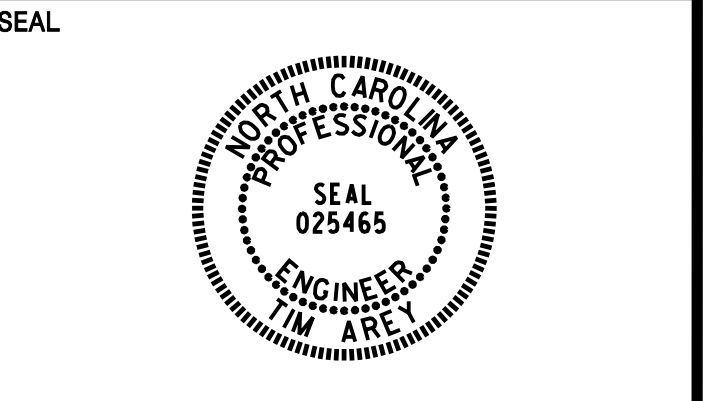
ENGLISH DETAIL DRAWING FOR  
**GROUND MOUNTED SIGN SUPPORTS**

SHEET 2 OF 3  
**903D10**

REVISED SIGNING  
 ROADWAY STANDARD DRAWING

**SIGNING PLANS**  
 REVISED ROADWAY STANDARD  
 DRAWING 903D10

26-JUL-2013 09:50 S:\3380\Standards\Group NEW Standards and Drawings\Drawings\2012 Standard Dwg\030310\_sgn\_sht-02.dwg support-1\_Revise.dwg 7-3-13.dgn



DOCUMENT NOT CONSIDERED FINAL  
 UNLESS ALL SIGNATURES COMPLETED

(401) QUANTITY REQ'D 1

W4-1 (R)  
36" x 36"

ONE "U" POST PER SIGN

(406) QUANTITY REQ'D 2

W4-1 (R)  
48" x 48"

TWO "U" POSTS PER SIGN

(411) QUANTITY REQ'D 6

W1-8 (R)  
30" x 36"

INSTALL EACH SIGN ON TWO "U" POSTS SPACED APPROXIMATELY 24" APART ON SUPPORT CENTER.  
 INSTALL 28" HORIZONTAL CROSS BRACING LEAVING A 1 INCH MARGIN FROM LEFT AND RIGHT EDGES OF SIGN.  
 INSTALLATION HEIGHT: BOTTOM OF SIGN SHALL BE 4 FEET ABOVE THE EDGE OF THE EDGE OF TRAVEL LANE ELEVATION (RIGHT EDGELINE OF RAMP).  
 ALL OTHER PORTIONS OF ROADWAY STANDARD DRAWING #904.50 APPLY.

(416) QUANTITY REQ'D 2

W9-1 (R)  
48" x 48"

TWO "U" POSTS PER SIGN

(421) QUANTITY REQ'D 2

W13-3  
36" x 48"

TWO "U" POSTS PER SIGN

(402) QUANTITY REQ'D 2

R1-2  
36" x 36"

ONE "U" POST PER SIGN

(407) QUANTITY REQ'D 1

W4-3 (R)  
36" x 36"

ONE "U" POST PER SIGN

(412) QUANTITY REQ'D 1

W1-2R  
36" x 36"

ONE "U" POST PER SIGN

(417) QUANTITY REQ'D 2

W16-3aP  
30" x 12"

MOUNT BELOW SIGN NO. 415  
 IN 2 INSTALLATIONS

(418) QUANTITY REQ'D 1

W13-2  
36" x 48"

TWO "U" POSTS PER SIGN

(403) QUANTITY REQ'D 2

R5-1  
36" x 36"

ONE "U" POST PER SIGN

(408) QUANTITY REQ'D 1

W13-6  
36" x 60"

TWO "U" POSTS PER SIGN

(413) QUANTITY REQ'D 1

W1-2L  
36" x 36"

ONE "U" POST PER SIGN

(418) QUANTITY REQ'D 1

W13-2  
36" x 48"

TWO "U" POSTS PER SIGN

(419) QUANTITY REQ'D 3

W9-2 (R)  
36" x 36"

One "U" POST PER SIGN

(404) QUANTITY REQ'D 2

R5-1a  
36" x 24"

ONE "U" POST PER SIGN

(409) QUANTITY REQ'D 1

W13-7  
36" x 60"

TWO "U" POSTS PER SIGN

(414) QUANTITY REQ'D 2

W13-1P  
24" x 24"

MOUNT BELOW SIGN NOS. 412 AND 413  
 IN 1 INSTALLATION PER SIGN

(419) QUANTITY REQ'D 3

W9-2 (R)  
36" x 36"

One "U" POST PER SIGN

(405) QUANTITY REQ'D 2

W2-6  
36" x 36"

ONE "U" POST PER SIGN

(410) QUANTITY REQ'D 1

36" x 36"

ONE "U" POST PER SIGN

(415) QUANTITY REQ'D 4

W9-2 (R)  
48" x 48"

TWO "U" POSTS PER SIGN

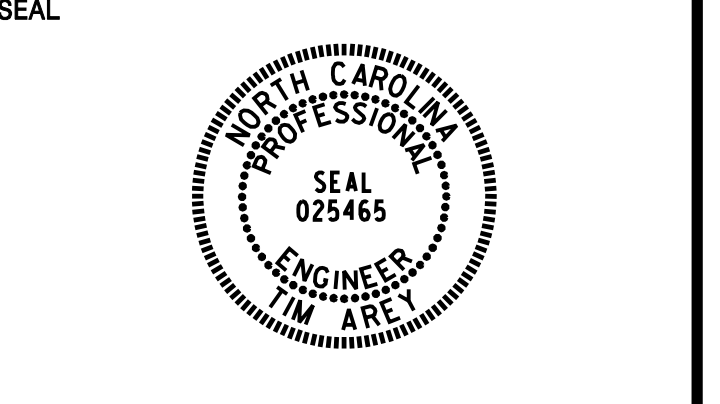
(420) QUANTITY REQ'D 3

W9-1 (R)  
36" x 36"

ONE "U" POST PER SIGN

**SIGNING PLANS**  
 TYPE "E" SIGNS

APPROVED: *Jim Arny*  
 DATE: 8/7/2017



DOCUMENT NOT CONSIDERED FINAL  
 UNLESS ALL SIGNATURES COMPLETED

(501) QUANTITY REQ'D 1

ONE "U" POST PER SIGN ASSEMBLY

(502) QUANTITY REQ'D 1

ONE "U" POST PER SIGN ASSEMBLY

(503) QUANTITY REQ'D 1

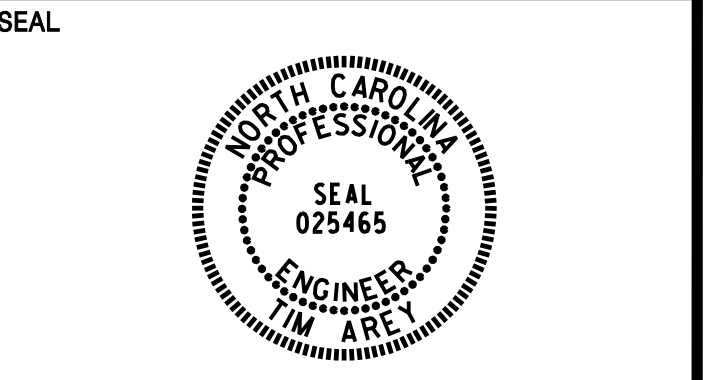
TWO "U" POSTS PER SIGN ASSEMBLY

(504) QUANTITY REQ'D 1

ONE "U" POST PER SIGN ASSEMBLY

**SIGNING PLANS**





DOCUMENT NOT CONSIDERED FINAL  
 UNLESS ALL SIGNATURES COMPLETED

SIGN NUMBER: 1A,4A TYPE: B QUANTITY: 2  
 SIGN WIDTH: 9'-6" HEIGHT: 2'-6" TOTAL AREA: 23.8 Sq.Ft.  
 BORDER TYPE: FLUSH RECESS: 0" WIDTH: 2" RADII: 3"  
 NO. Z BARS: 2 LENGTH: 106.0  
 BACKG COLOR: Green COPY COLOR: White  
 MAT'L: 0.125" (3.2 mm) ALUMINUM

DESIGN BY: LA CHECKED BY: SK DATE: Jul 25, 2017  
 PROJECT ID: I-4729A DIV: 14

USE NOTES:  
 1. Legend and border(except those that are colored black) shall be direct applied Grade A sheeting.  
 2. Background shall be Grade C reflective sheeting.

Spacing Factor is 1 unless specified otherwise

LETTER POSITIONS

Letter spacings are to start of next letter

Series/Size	Text Length
E 2000	72.9

FILENAME: sign designs\_FINAL NORTH CAROLINA D.O.T. SIGN DETAIL

SIGN NUMBER: 2A TYPE: B QUANTITY: 1  
 SIGN WIDTH: 9'-6" HEIGHT: 2'-6" TOTAL AREA: 23.8 Sq.Ft.  
 BORDER TYPE: FLUSH RECESS: 0" WIDTH: 2" RADII: 3"  
 NO. Z BARS: 2 LENGTH: 106.0  
 BACKG COLOR: Green COPY COLOR: White  
 MAT'L: 0.125" (3.2 mm) ALUMINUM

DESIGN BY: LA CHECKED BY: SK DATE: Jul 25, 2017  
 PROJECT ID: I-4729A DIV: 14

USE NOTES:  
 1. Legend and border(except those that are colored black) shall be direct applied Grade A sheeting.  
 2. Background shall be Grade C reflective sheeting.

Spacing Factor is 1 unless specified otherwise

LETTER POSITIONS

Letter spacings are to start of next letter

Series/Size	Text Length
E 2000	72

FILENAME: sign designs\_FINAL NORTH CAROLINA D.O.T. SIGN DETAIL

SIGN NUMBER: 1B TYPE: A QUANTITY: 1  
 SIGN WIDTH: 15'-0" HEIGHT: 13'-0" TOTAL AREA: 195.0 Sq.Ft.  
 BORDER TYPE: FLUSH RECESS: 0" WIDTH: 2" RADII: 12"  
 NO. Z BARS: 4 LENGTH: 172.0  
 BACKG COLOR: Green COPY COLOR: White  
 MAT'L: 0.125" (3.2 mm) ALUMINUM

DESIGN BY: LA CHECKED BY: SK DATE: Jul 25, 2017  
 PROJECT ID: I-4729A DIV: 14

USE NOTES:  
 1. Legend and border(except those that are colored black) shall be direct applied Grade A sheeting.  
 2. Background shall be Grade C reflective sheeting.  
 3. Shields; A, B, and C type arrows shall be on 0.032" (0.8mm) aluminum and demountable.

Spacing Factor is 1 unless specified otherwise

LETTER POSITIONS

Letter spacings are to start of next letter

Series/Size	Text Length
E 2000	47.2
EM 2000	143.7
EM 2000	85.9
E 2000	70.1

FILENAME: sign designs\_FINAL NORTH CAROLINA D.O.T. SIGN DETAIL

SIGN NUMBER: 2B TYPE: A QUANTITY: 1  
 SIGN WIDTH: 17'-0" HEIGHT: 9'-6" TOTAL AREA: 161.5 Sq.Ft.  
 BORDER TYPE: FLUSH RECESS: 0" WIDTH: 2" RADII: 12"  
 NO. Z BARS: 3 LENGTH: 196.0  
 BACKG COLOR: Green COPY COLOR: White  
 MAT'L: 0.125" (3.2 mm) ALUMINUM

DESIGN BY: LA CHECKED BY: SK DATE: Aug 03, 2017  
 PROJECT ID: I-4729A DIV: 14

USE NOTES:  
 1. Legend and border(except those that are colored black) shall be direct applied Grade A sheeting.  
 2. Background shall be Grade C reflective sheeting.  
 3. Shields; A, B, and C type arrows shall be on 0.032" (0.8mm) aluminum and demountable.

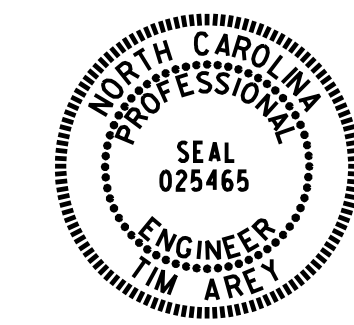
Spacing Factor is 1 unless specified otherwise

LETTER POSITIONS

Letter spacings are to start of next letter

Series/Size	Text Length
EM 2000	123.7
EM 2000	69

FILENAME: sign designs\_FINAL NORTH CAROLINA D.O.T. SIGN DETAIL



DOCUMENT NOT CONSIDERED FINAL  
 UNLESS ALL SIGNATURES COMPLETED

SIGN NUMBER: 3,7 TYPE: A QUANTITY: 2  
 BACKG COLOR: Green COPY COLOR: White  
 SIGN WIDTH: 17'-6" HEIGHT: 13'-0" TOTAL AREA: 227.5 Sq.Ft.  
 BORDER TYPE: FLUSH RECESS: 0" WIDTH: 2" RADII: 12"  
 NO. Z BARS: 4 LENGTH: 202.0  
 MAT'L: 0.125" (3.2 mm) ALUMINUM

DESIGN BY: LA CHECKED BY: SK DATE: Jul 25, 2017  
 PROJECT ID: I-4729A DIV: 14

USE NOTES:  
 1. Legend and border(except those that are colored black) shall be direct applied Grade A sheeting.  
 2. Background shall be Grade C reflective sheeting.  
 3. Shields; A, B, and C type arrows shall be on 0.032" (0.8mm) aluminum and demountable.

Spacing Factor is 1 unless specified otherwise

LETTER POSITIONS

Letter spacings are to start of next letter

Series/Size	Text Length
E 2000	48.9
E 2000	48.9
EM 2000	117.9

FILENAME: sign designs\_FINAL NORTH CAROLINA D.O.T. SIGN DETAIL

SIGN NUMBER: 5 TYPE: A QUANTITY: 1  
 BACKG COLOR: Green COPY COLOR: White  
 SIGN WIDTH: 13'-0" HEIGHT: 8'-6" TOTAL AREA: 110.5 Sq.Ft.  
 BORDER TYPE: FLUSH RECESS: 0" WIDTH: 2" RADII: 12"  
 NO. Z BARS: 3 LENGTH: 148.0  
 MAT'L: 0.125" (3.2 mm) ALUMINUM

DESIGN BY: LA CHECKED BY: SK DATE: Jul 25, 2017  
 PROJECT ID: I-4729A DIV: 14

USE NOTES:  
 1. Legend and border(except those that are colored black) shall be direct applied Grade A sheeting.  
 2. Background shall be Grade C reflective sheeting.  
 3. Shields; A, B, and C type arrows shall be on 0.032" (0.8mm) aluminum and demountable.

Spacing Factor is 1 unless specified otherwise

LETTER POSITIONS

Letter spacings are to start of next letter

Series/Size	Text Length
E 2000	31.7
EM 2000	132.8

FILENAME: sign designs\_FINAL NORTH CAROLINA D.O.T. SIGN DETAIL

SIGN NUMBER: 4B TYPE: A QUANTITY: 1  
 BACKG COLOR: Green COPY COLOR: White  
 SIGN WIDTH: 18'-0" HEIGHT: 11'-0" TOTAL AREA: 198.0 Sq.Ft.  
 BORDER TYPE: FLUSH RECESS: 0" WIDTH: 2" RADII: 12"  
 NO. Z BARS: 3 LENGTH: 208.0  
 MAT'L: 0.125" (3.2 mm) ALUMINUM

DESIGN BY: LA CHECKED BY: SK DATE: Jul 25, 2017  
 PROJECT ID: I-4729A DIV: 14

USE NOTES:  
 1. Legend and border(except those that are colored black) shall be direct applied Grade A sheeting.  
 2. Background shall be Grade C reflective sheeting.  
 3. Shields; A, B, and C type arrows shall be on 0.032" (0.8mm) aluminum and demountable.

Panel Style: Standard 36 Inch Shield.ssi  
 M.U.T.C.D.: 2009 Edition

Spacing Factor is 1 unless specified otherwise

LETTER POSITIONS

Letter spacings are to start of next letter

Series/Size	Text Length
E 2000	47.2
EM 2000	143.7
EM 2000	85.9

FILENAME: sign designs\_FINAL NORTH CAROLINA D.O.T. SIGN DETAIL

SIGN NUMBER: 6 TYPE: A QUANTITY: 1  
 BACKG COLOR: Green COPY COLOR: White  
 SIGN WIDTH: 11'-0" HEIGHT: 10'-6" TOTAL AREA: 115.5 Sq.Ft.  
 BORDER TYPE: FLUSH RECESS: 0" WIDTH: 2" RADII: 12"  
 NO. Z BARS: 3 LENGTH: 124.0  
 MAT'L: 0.125" (3.2 mm) ALUMINUM

DESIGN BY: LA CHECKED BY: SK DATE: Jul 25, 2017  
 PROJECT ID: I-4729A DIV: 14

USE NOTES:  
 1. Legend and border(except those that are colored black) shall be direct applied Grade A sheeting.  
 2. Background shall be Grade C reflective sheeting.  
 3. Shields; A, B, and C type arrows shall be on 0.032" (0.8mm) aluminum and demountable.

Spacing Factor is 1 unless specified otherwise

LETTER POSITIONS

Letter spacings are to start of next letter

Series/Size	Text Length
E 2000	13.8
EM 2000	103.6
EM 2000	57.8

FILENAME: sign designs\_FINAL NORTH CAROLINA D.O.T. SIGN DETAIL





DOCUMENT NOT CONSIDERED FINAL  
 UNLESS ALL SIGNATURES COMPLETED

SIGN NUMBER: 101A,102A    BACKG COLOR: Green  
 TYPE: B    COPY COLOR: White  
 QUANTITY: 2

SYMBOL	X	Y	WID	HT

SIGN WIDTH: 9'-6"  
 HEIGHT: 2'-6"  
 TOTAL AREA: 23.8 Sq.Ft.

BORDER TYPE: FLUSH  
 RECESS: 0"  
 WIDTH: 2"  
 RADII: 3"

NO. Z BARS: 2  
 LENGTH: 106.0

MAT'L: 0.125" (3.2 mm) ALUMINUM

DESIGN BY: LA    CHECKED BY: SK    DATE: Jul 25, 2017  
 PROJECT ID: I-4729A    DIV: 14

USE NOTES:  
 1. Legend and border(except those that are colored black) shall be direct applied Grade C sheeting.  
 2. Background shall be Grade C reflective sheeting.

Spacing Factor is 1 unless specified otherwise

LETTER POSITIONS

Letter spacings are to start of next letter

Series/Size	Text Length
E 2000	72

FILENAME: sign designs\_FINAL    NORTH CAROLINA D.O.T. SIGN DETAIL

SIGN NUMBER: 101C    BACKG COLOR: Blue  
 TYPE: A    COPY COLOR: White  
 QUANTITY: 1

SYMBOL	X	Y	WID	HT

SIGN WIDTH: 13'-0"  
 HEIGHT: 2'-0"  
 TOTAL AREA: 26.0 Sq.Ft.

BORDER TYPE: FLUSH  
 RECESS: 0"  
 WIDTH: 1.5"  
 RADII: 3"

NO. Z BARS: 2  
 LENGTH: 148.0

MAT'L: 0.125" (3.2 mm) ALUMINUM

DESIGN BY: LA    CHECKED BY: SK    DATE: Jul 25, 2017  
 PROJECT ID: I-4729A    DIV: 14

USE NOTES:  
 1. Legend and border(except those that are colored black) shall be direct applied Grade C sheeting.  
 2. Background shall be Grade C reflective sheeting.

Spacing Factor is 1 unless specified otherwise

LETTER POSITIONS

Letter spacings are to start of next letter

Series/Size	Text Length
D 2000	142.1

FILENAME: sign designs\_FINAL    NORTH CAROLINA D.O.T. SIGN DETAIL

SIGN NUMBER: 101B    BACKG COLOR: Green  
 TYPE: A    COPY COLOR: White  
 QUANTITY: 1

SYMBOL	X	Y	WID	HT
M1-5-3-36-12D	60	100.4	36	36

SIGN WIDTH: 13'-0"  
 HEIGHT: 13'-0"  
 TOTAL AREA: 169.0 Sq.Ft.

BORDER TYPE: FLUSH  
 RECESS: 0"  
 WIDTH: 2"  
 RADII: 12"

NO. Z BARS: 4  
 LENGTH: 148.0

MAT'L: 0.125" (3.2 mm) ALUMINUM

DESIGN BY: LA    CHECKED BY: SK    DATE: Jul 25, 2017  
 PROJECT ID: I-4729A    DIV: 14

USE NOTES:  
 1. Legend and border(except those that are colored black) shall be direct applied Grade C sheeting.  
 2. Background shall be Grade C reflective sheeting.  
 3. Shields; A, B, and C type arrows shall be on 0.032" (0.8mm) aluminum and demountable.

Spacing Factor is 1 unless specified otherwise

LETTER POSITIONS

Letter spacings are to start of next letter

Series/Size	Text Length
EM 2000	123.7
EM 2000	69
E 2000	52.6

FILENAME: sign designs\_FINAL    NORTH CAROLINA D.O.T. SIGN DETAIL

SIGN NUMBER: 102B    BACKG COLOR: Green  
 TYPE: A    COPY COLOR: White  
 QUANTITY: 1

SYMBOL	X	Y	WID	HT
M1-5-3-36-12D	60	100.4	36	36

SIGN WIDTH: 13'-0"  
 HEIGHT: 13'-0"  
 TOTAL AREA: 169.0 Sq.Ft.

BORDER TYPE: FLUSH  
 RECESS: 0"  
 WIDTH: 2"  
 RADII: 12"

NO. Z BARS: 4  
 LENGTH: 148.0

MAT'L: 0.125" (3.2 mm) ALUMINUM

DESIGN BY: LA    CHECKED BY: SK    DATE: Jul 25, 2017  
 PROJECT ID: I-4729A    DIV: 14

USE NOTES:  
 1. Legend and border(except those that are colored black) shall be direct applied Grade C sheeting.  
 2. Background shall be Grade C reflective sheeting.  
 3. Shields; A, B, and C type arrows shall be on 0.032" (0.8mm) aluminum and demountable.

Spacing Factor is 1 unless specified otherwise

LETTER POSITIONS

Letter spacings are to start of next letter

Series/Size	Text Length
EM 2000	123.7
EM 2000	69
E 2000	70.1

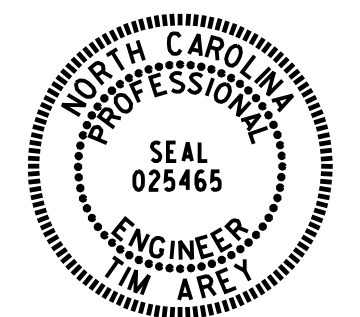
FILENAME: sign designs\_FINAL    NORTH CAROLINA D.O.T. SIGN DETAIL



APPROVED: *Jim Ouy*

DATE: 8/7/2017

SEAL



DOCUMENT NOT CONSIDERED FINAL  
 UNLESS ALL SIGNATURES COMPLETED

SIGN NUMBER: 104B      BACKG COLOR: Green  
 TYPE: A                      COPY COLOR: White  
 QUANTITY: 1

SYMBOL	X	Y	WID	HT
M1	42.5	87.9	36	36
M1-5-3-36-12D	119.1	87.9	36	36

SIGN WIDTH: 16'-0"  
 HEIGHT: 13'-0"  
 TOTAL AREA: 208.0 Sq.Ft.

BORDER TYPE: FLUSH  
 RECESS: 0"  
 WIDTH: 2"  
 RADII: 12"

NO. Z BARS: 4  
 LENGTH: 184.0

MAT'L: 0.125" (3.2 mm) ALUMINUM

DESIGN BY: LA      CHECKED BY: SK  
 PROJECT ID: I-4729A      DIV: 14      DATE: Aug 05, 2017

Spacing Factor is 1 unless specified otherwise

LETTER POSITIONS

Letter spacings are to start of next letter

Series/Size	Text Length	E	A	S	T	108
E 2000	47.2	36.9	11.3	2.3	13.6	11
E 2000	20.8	126.7	10.7	10.1	44.5	
EM 2000	69	61.5	15.7	10.1	16.8	15.8
EM 2000	158.6	16.7	17.9	14.1	17	10.2
E 2000	108.6	42.7	12.8	10.7	11.8	9

FILENAME: sign designs\_FINAL      NORTH CAROLINA D.O.T. SIGN DETAIL

SIGN NUMBER: 106      BACKG COLOR: Blue  
 TYPE: A                      COPY COLOR: White  
 QUANTITY: 1

SYMBOL	X	Y	WID	HT
M1	42.5	87.9	36	36
M1-5-3-36-12D	119.1	87.9	36	36

SIGN WIDTH: 11'-0"  
 HEIGHT: 6'-0"  
 TOTAL AREA: 66.0 Sq.Ft.

BORDER TYPE: FLUSH  
 RECESS: 0"  
 WIDTH: 2"  
 RADII: 12"

NO. Z BARS: 2  
 LENGTH: 124.0

MAT'L: 0.125" (3.2 mm) ALUMINUM

DESIGN BY: LA      CHECKED BY: SK  
 PROJECT ID: I-4729A      DIV: 14      DATE: Jul 31, 2017

Spacing Factor is 1 unless specified otherwise

LETTER POSITIONS

Letter spacings are to start of next letter

Series/Size	Text Length	H	O	S	P	I	T	A	L
E 2000	85.9	23	12.5	12.1	12.1	11.8	4.2	10	14.3
E 2000	20.8	30	8.9	10.7	3.5	7.5	15	14.2	12.2
EM 2000	72	61.5	15.7	10.1	16.8	15.8	10.8	61.5	
EM 2000	158.6	16.7	17.9	14.1	17	10.2	12	17	15.5
E 2000	108.6	42.7	12.8	10.7	11.8	9	12	12.1	4.9

FILENAME: sign designs\_FINAL      NORTH CAROLINA D.O.T. SIGN DETAIL

SIGN NUMBER: 105B      BACKG COLOR: Green  
 TYPE: A                      COPY COLOR: White  
 QUANTITY: 1

SYMBOL	X	Y	WID	HT
M1	42.5	87.9	36	36
M1-5-3-36-12D	119.1	87.9	36	36

SIGN WIDTH: 16'-0"  
 HEIGHT: 13'-0"  
 TOTAL AREA: 208.0 Sq.Ft.

BORDER TYPE: FLUSH  
 RECESS: 0"  
 WIDTH: 2"  
 RADII: 12"

NO. Z BARS: 4  
 LENGTH: 184.0

MAT'L: 0.125" (3.2 mm) ALUMINUM

DESIGN BY: LA      CHECKED BY: SK  
 PROJECT ID: I-4729A      DIV: 14      DATE: Aug 05, 2017

Spacing Factor is 1 unless specified otherwise

LETTER POSITIONS

Letter spacings are to start of next letter

Series/Size	Text Length	E	A	S	T	108
E 2000	47.2	36.9	11.3	2.3	13.6	11
E 2000	20.8	126.7	10.7	10.1	44.5	
EM 2000	69	61.5	15.7	10.1	16.8	15.8
EM 2000	158.6	16.7	17.9	14.1	17	10.2
E 2000	52.6	69.7	4.5	15	12	4.4

FILENAME: sign designs\_FINAL      NORTH CAROLINA D.O.T. SIGN DETAIL

SIGN NUMBER: 301      BACKG COLOR: Green  
 TYPE: D                      COPY COLOR: White  
 QUANTITY: 1

SYMBOL	X	Y	WID	HT
M1	43.7	29.5	26.4	

SIGN WIDTH: 8'-6"  
 HEIGHT: 3'-6"  
 TOTAL AREA: 29.8 Sq.Ft.

BORDER TYPE: FLUSH  
 RECESS: 0"  
 WIDTH: 0.75"  
 RADII: 6"

NO. Z BARS: 1  
 LENGTH: 124.0

MAT'L: 0.125" (3.2 mm) ALUMINUM

DESIGN BY: LA      CHECKED BY: SK  
 PROJECT ID: I-4729A      DIV: 14      DATE: Jul 25, 2017

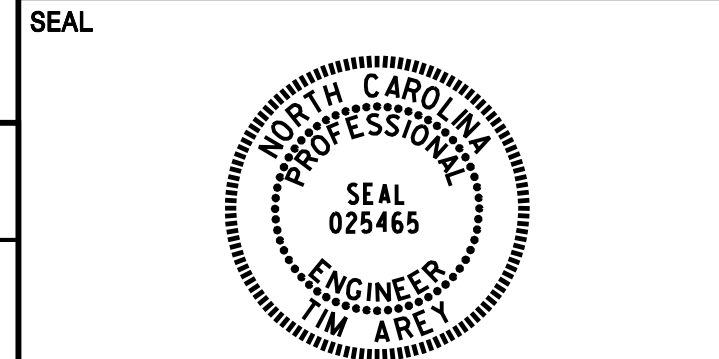
Spacing Factor is 1 unless specified otherwise

LETTER POSITIONS

Letter spacings are to start of next letter

Series/Size	Text Length	S	p	a	r	t	a	n	b	u	r	g
D 2000	43.9	36.6	5	4.3	4.6	2.5	2.8	4.6	4.7	4.5	4.7	2.8
D 2000	35.3	5.9	5	4.6	2.1	4.7	7.1	4.5	4.4	2.8	60.8	
D 2000	20.2	76	4.5	2.5	5	4.6	3.5	5.9				

FILENAME: sign designs\_FINAL      NORTH CAROLINA D.O.T. SIGN DETAIL



DOCUMENT NOT CONSIDERED FINAL  
 UNLESS ALL SIGNATURES COMPLETED

SIGN NUMBER: 201      BACKG COLOR: Green  
 TYPE: A              COPY COLOR: White  
 QUANTITY: 1

SYMBOL	X	Y	WID	HT
AR_Type A	49	6	18.3	29.3

SIGN WIDTH: 6'-6"  
 HEIGHT: 5'-0"  
 TOTAL AREA: 32.5 Sq.Ft.

BORDER TYPE: FLUSH  
 RECESS: 0"  
 WIDTH: 1.5"  
 RADII: 8"

NO. Z BARS: 2  
 LENGTH: 70.0

MAT'L: 0.125" (3.2 mm) ALUMINUM

DESIGN BY: LA      CHECKED BY: SK      DATE: Jul 25, 2017  
 PROJECT ID: I-4729A      DIV: 14

USE NOTES:  
 1. Legend and border(except those that are colored black) shall be direct applied Grade C sheeting.  
 2. Background shall be Grade C reflective sheeting.  
 3. Shields; A, B, and C type arrows shall be on 0.032" (0.8mm) aluminum and demountable.

Spacing Factor is 1 unless specified otherwise

LETTER POSITIONS

Letter spacings are to start of next letter

	E	X	I	T	Series/Size			
	16.8	12.8	15.8	6.8	9	16.8	E 2000	44.4
	8	7					E 2000	31.7

FILENAME: sign designs\_FINAL      NORTH CAROLINA D.O.T. SIGN DETAIL

SIGN NUMBER: 203A      BACKG COLOR: Green  
 TYPE: A              COPY COLOR: White  
 QUANTITY: 1

SYMBOL	X	Y	WID	HT
AR_Type A	61	6	18.3	29.3

SIGN WIDTH: 8'-0"  
 HEIGHT: 5'-0"  
 TOTAL AREA: 40.0 Sq.Ft.

BORDER TYPE: FLUSH  
 RECESS: 0"  
 WIDTH: 1.5"  
 RADII: 8"

NO. Z BARS: 2  
 LENGTH: 88.0

MAT'L: 0.125" (3.2 mm) ALUMINUM

DESIGN BY: LA      CHECKED BY: SK      DATE: Jul 25, 2017  
 PROJECT ID: I-4729A      DIV: 14

USE NOTES:  
 1. Legend and border(except those that are colored black) shall be direct applied Grade C sheeting.  
 2. Background shall be Grade C reflective sheeting.  
 3. Shields; A, B, and C type arrows shall be on 0.032" (0.8mm) aluminum and demountable.

Spacing Factor is 1 unless specified otherwise

LETTER POSITIONS

Letter spacings are to start of next letter

	E	X	I	T	Series/Size			
	25.8	12.8	15.8	6.8	9	25.8	E 2000	44.4
	15	9.5	18.2	5.4	47.9		E 2000	33.1

FILENAME: sign designs\_FINAL      NORTH CAROLINA D.O.T. SIGN DETAIL

SIGN NUMBER: 202      BACKG COLOR: Green  
 TYPE: A              COPY COLOR: White  
 QUANTITY: 1

SYMBOL	X	Y	WID	HT
AR_Type A	49	6	18.3	29.3

SIGN WIDTH: 6'-6"  
 HEIGHT: 5'-0"  
 TOTAL AREA: 32.5 Sq.Ft.

BORDER TYPE: FLUSH  
 RECESS: 0"  
 WIDTH: 1.5"  
 RADII: 8"

NO. Z BARS: 2  
 LENGTH: 70.0

MAT'L: 0.125" (3.2 mm) ALUMINUM

DESIGN BY: LA      CHECKED BY: SK      DATE: Jul 25, 2017  
 PROJECT ID: I-4729A      DIV: 14

USE NOTES:  
 1. Legend and border(except those that are colored black) shall be direct applied Grade C sheeting.  
 2. Background shall be Grade C reflective sheeting.  
 3. Shields; A, B, and C type arrows shall be on 0.032" (0.8mm) aluminum and demountable.

Spacing Factor is 1 unless specified otherwise

LETTER POSITIONS

Letter spacings are to start of next letter

	E	X	I	T	Series/Size			
	16.8	12.8	15.8	6.8	9	16.8	E 2000	44.4
	8	18.2	14.6	37.2			E 2000	32.8

FILENAME: sign designs\_FINAL      NORTH CAROLINA D.O.T. SIGN DETAIL

SIGN NUMBER: 203B      BACKG COLOR: Yellow  
 TYPE: B              COPY COLOR: Black  
 QUANTITY: 1

SYMBOL	X	Y	WID	HT

SIGN WIDTH: 6'-0"  
 HEIGHT: 2'-0"  
 TOTAL AREA: 12.0 Sq.Ft.

BORDER TYPE: RECESSED  
 RECESS: 0.63"  
 WIDTH: 0.88"  
 RADII: 2.38"

NO. Z BARS: 2  
 LENGTH: 64.0

MAT'L: 0.125" (3.2 mm) ALUMINUM

DESIGN BY: none      CHECKED BY: DIV      DATE: Jul 25, 2017  
 PROJECT ID: ID      DIV: DIV

USE NOTES:  
 1. Legend and border(except those that are colored black) shall be direct applied Grade C sheeting.  
 2. Background shall be Grade C reflective sheeting.

Spacing Factor is 1 unless specified otherwise

LETTER POSITIONS

Letter spacings are to start of next letter

	2	5	M	P	H	Series/Size				
	7	11.4	9.7	7	12	9.8	8.1	7	E 2000	58

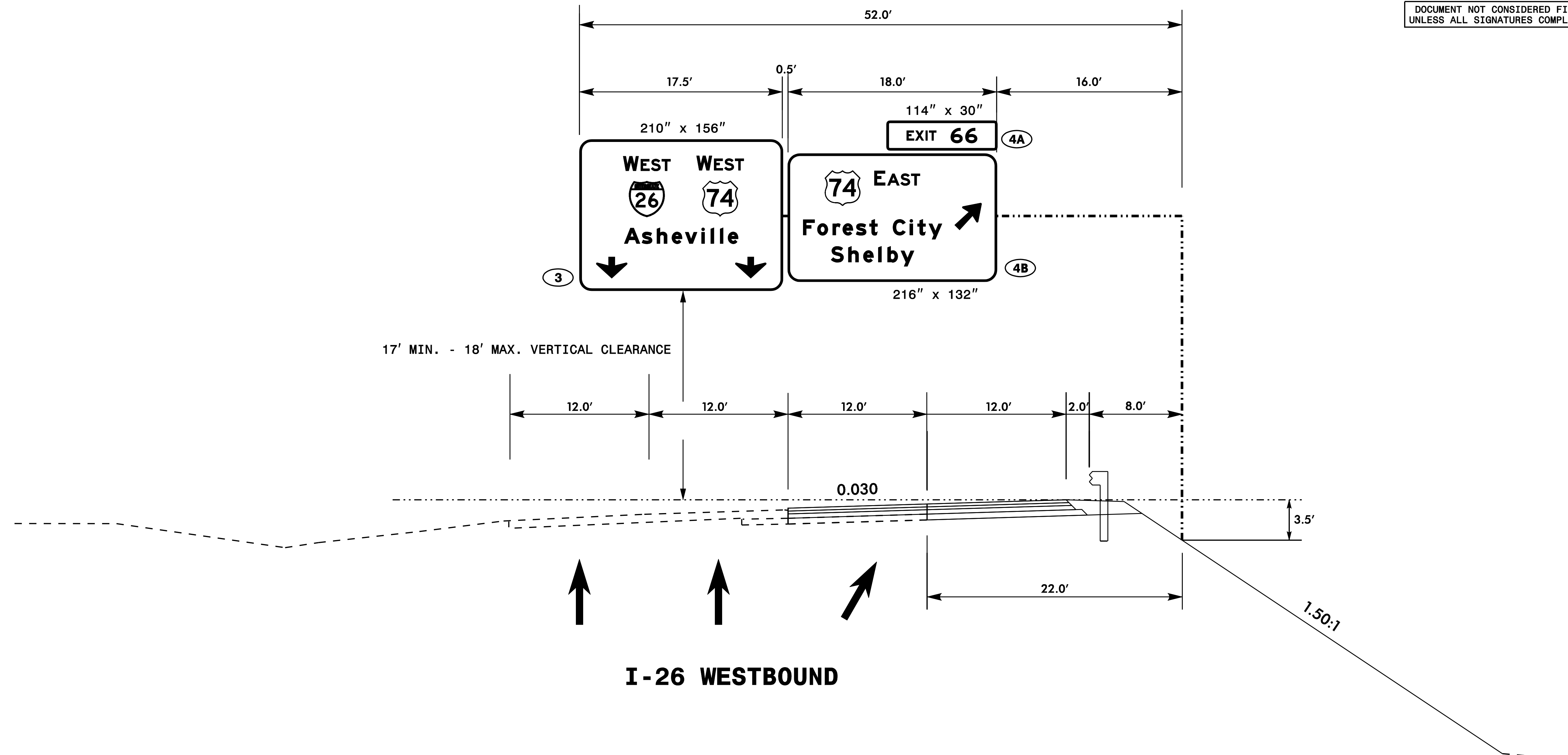
FILENAME: sign designs\_FINAL      NORTH CAROLINA D.O.T. SIGN DETAIL

THESE DIMENSIONS SHALL BE USED FOR WIND LOAD AND DEAD LOAD COMPUTATIONS IN DESIGN OF STRUCTURE AND FOOTINGS. DESIGN AND CONSTRUCTION REQUIREMENTS FOR SIGN STRUCTURES SHALL ACCOMMODATE WIND VELOCITY OF 90 M.P.H.

PLAN PREPARED BY:  
**PROGRESSIVE**  
 DESIGN GROUP, INC.  
 ENGINEERS • CONSULTANTS

TIP NO. I-4729A	SHEET NO. SIGN-5A
APPROVED: <i>Jim Gray</i>	
DATE: 8/7/2017	
SEAL	

DOCUMENT NOT CONSIDERED FINAL UNLESS ALL SIGNATURES COMPLETED



NOTES:

1. MOUNT SIGNS VERTICALLY CENTERED ON HORIZONTAL MEMBER OF STRUCTURE.
2. FIELD VERIFICATION SHALL BE REQUIRED FOR ALL FOOTING ELEVATIONS, PER THE LATEST NCDOT STANDARD SPECIFICATIONS FOR ROADS AND STRUCTURES.
3. THE TOP OF THE FOOTING SHALL EXTEND AT LEAST 6 INCHES AND NOT MORE THAN 24 INCHES ABOVE THE HIGHEST POINT OF THE GROUND SURFACE AT THE FOOTING.
4. SIGN HANGERS AND ATTACHMENT HARDWARE SHALL BE PROVIDED AND INSTALLED ON THE ASSEMBLY TO ACCOMMODATE ALL SIGNS SHOWN IN THIS PLAN SHEET.
5. DESIGN AND CONSTRUCTION REQUIREMENTS FOR SIGN STRUCTURES SHALL ACCOMMODATE WIND VELOCITY OF 90 M.P.H.

PROPOSED OVERHEAD SIGN ASSEMBLY A  
 STA. 11+00 -RP E-

**SIGNING PLANS**

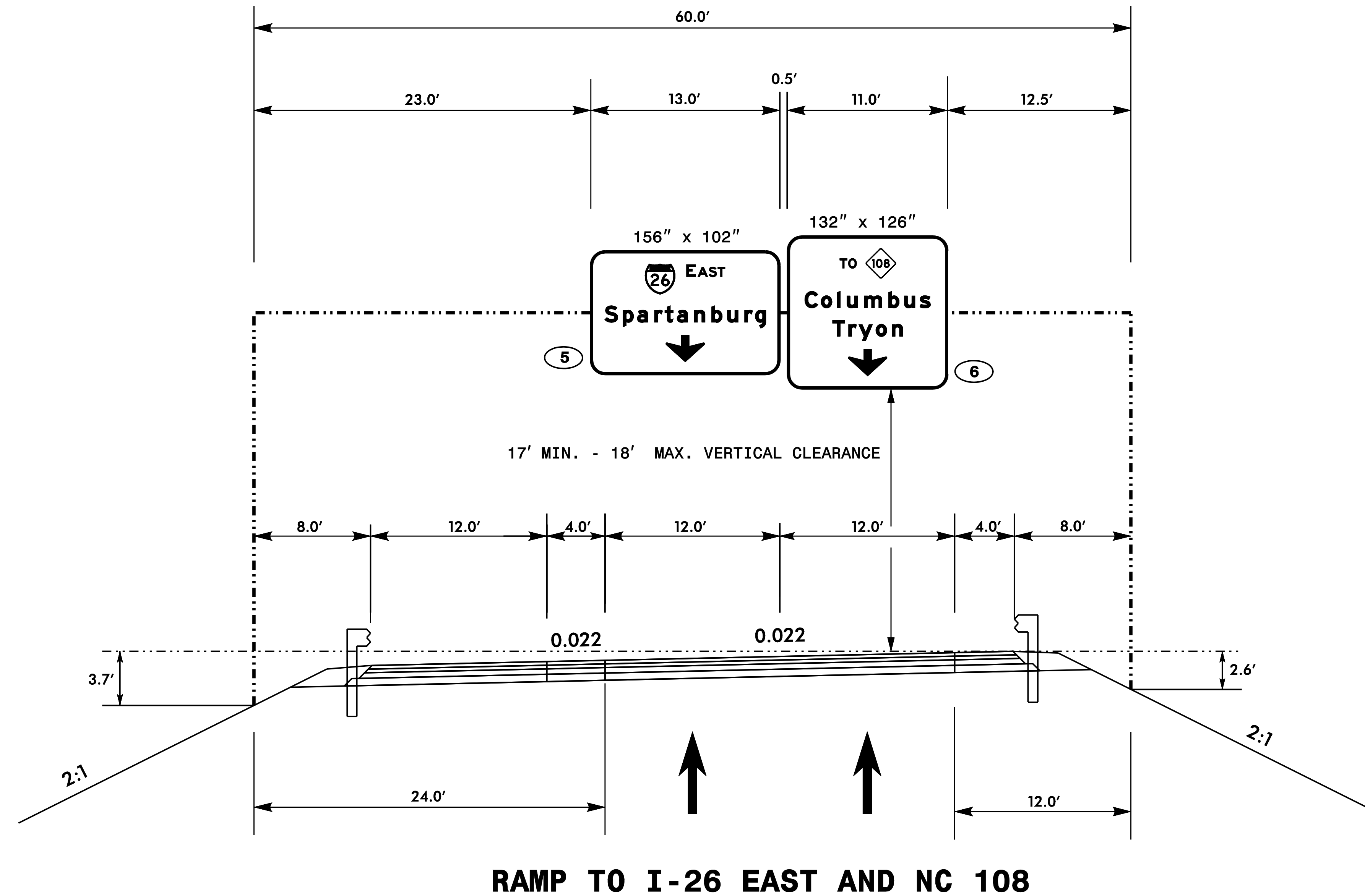


THESE DIMENSIONS SHALL BE USED FOR WIND LOAD AND DEAD LOAD COMPUTATIONS IN DESIGN OF STRUCTURE AND FOOTINGS. DESIGN AND CONSTRUCTION REQUIREMENTS FOR SIGN STRUCTURES SHALL ACCOMMODATE WIND VELOCITY OF 90 M.P.H.

PLAN PREPARED BY:  
**PROGRESSIVE**  
 DESIGN GROUP, INC.  
 ENGINEERS • CONSULTANTS

TIP NO. I-4729A	SHEET NO. SIGN-5B
APPROVED: <i>Jim Arvey</i>	
DATE: 8/7/2017	
SEAL	

DOCUMENT NOT CONSIDERED FINAL UNLESS ALL SIGNATURES COMPLETED



NOTES:

1. MOUNT SIGNS VERTICALLY 1'-9" HIGHER THAN CENTER ON HORIZONTAL MEMBER OF STRUCTURE SUCH THAT BOTTOM OF SIGN 3B WILL BE 3'-6" FROM CENTER OF TRUSS AND SIGN NO. 4 WILL BE 3'-3" FROM CENTER OF TRUSS.
2. FIELD VERIFICATION SHALL BE REQUIRED FOR ALL FOOTING ELEVATIONS, PER THE LATEST NCDOT STANDARD SPECIFICATIONS FOR ROADS AND STRUCTURES.
3. THE TOP OF THE FOOTING SHALL EXTEND AT LEAST 6 INCHES AND NOT MORE THAN 24 INCHES ABOVE THE HIGHEST POINT OF THE GROUND SURFACE AT THE FOOTING.
4. SIGN HANGERS AND ATTACHMENT HARDWARE SHALL BE PROVIDED AND INSTALLED ON THE ASSEMBLY TO ACCOMMODATE ALL SIGNS SHOWN IN THIS PLAN SHEET.
5. DESIGN AND CONSTRUCTION REQUIREMENTS FOR SIGN STRUCTURES SHALL ACCOMMODATE WIND VELOCITY OF 90 M.P.H.

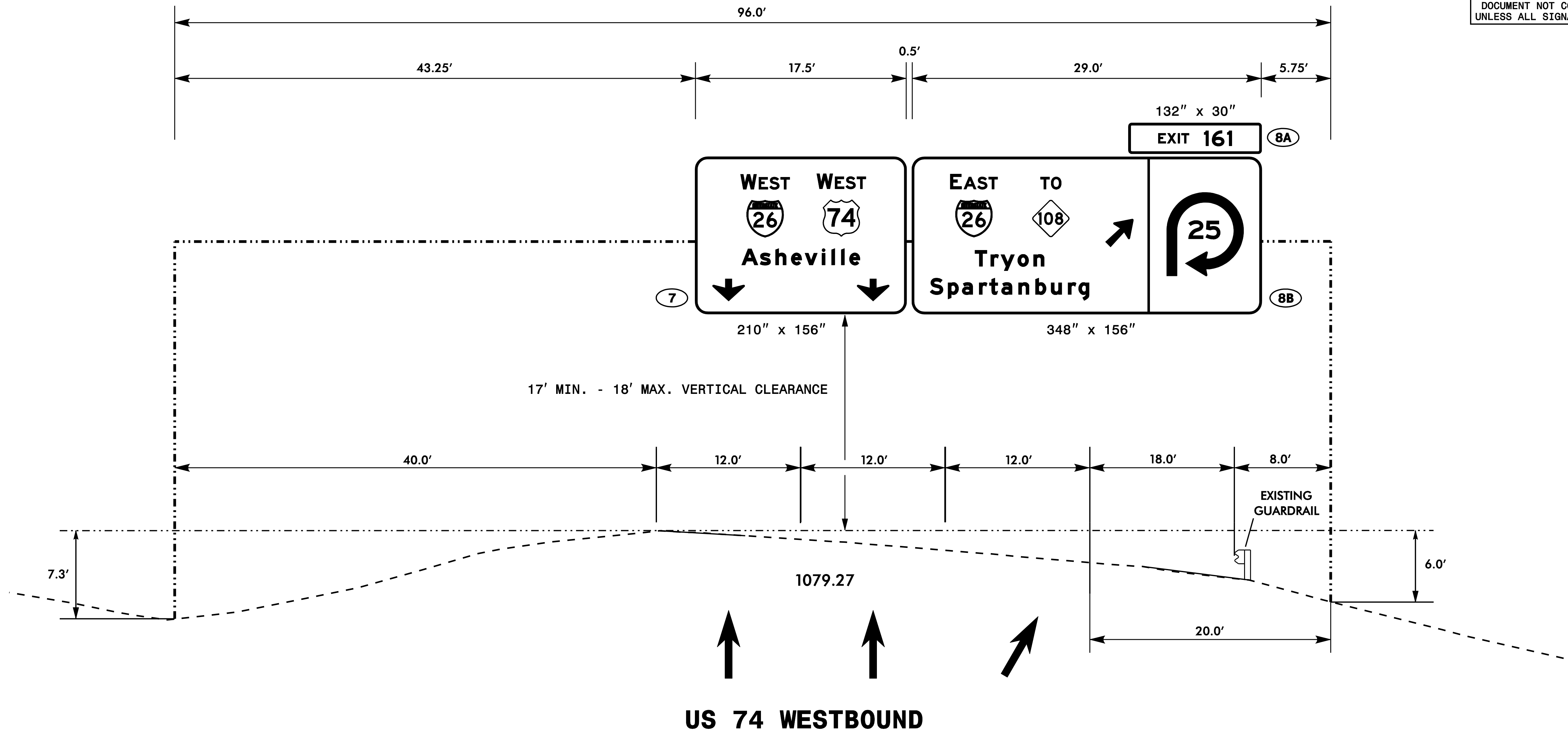
PROPOSED OVERHEAD SIGN ASSEMBLY B  
 STA. 19+00 -RP F-

**SIGNING PLANS**

THESE DIMENSIONS SHALL BE USED FOR WIND LOAD AND DEAD LOAD COMPUTATIONS IN DESIGN OF STRUCTURE AND FOOTINGS. DESIGN AND CONSTRUCTION REQUIREMENTS FOR SIGN STRUCTURES SHALL ACCOMMODATE WIND VELOCITY OF 90 M.P.H.

PLAN PREPARED BY: <b>PROGRESSIVE DESIGN GROUP, INC.</b> ENGINEERS • CONSULTANTS		TIP NO. I-4729A	SHEET NO. SIGN-5C
APPROVED: <i>Jim Gray</i>		DATE: 8/7/2017	
SEAL			

DOCUMENT NOT CONSIDERED FINAL UNLESS ALL SIGNATURES COMPLETED



NOTES:

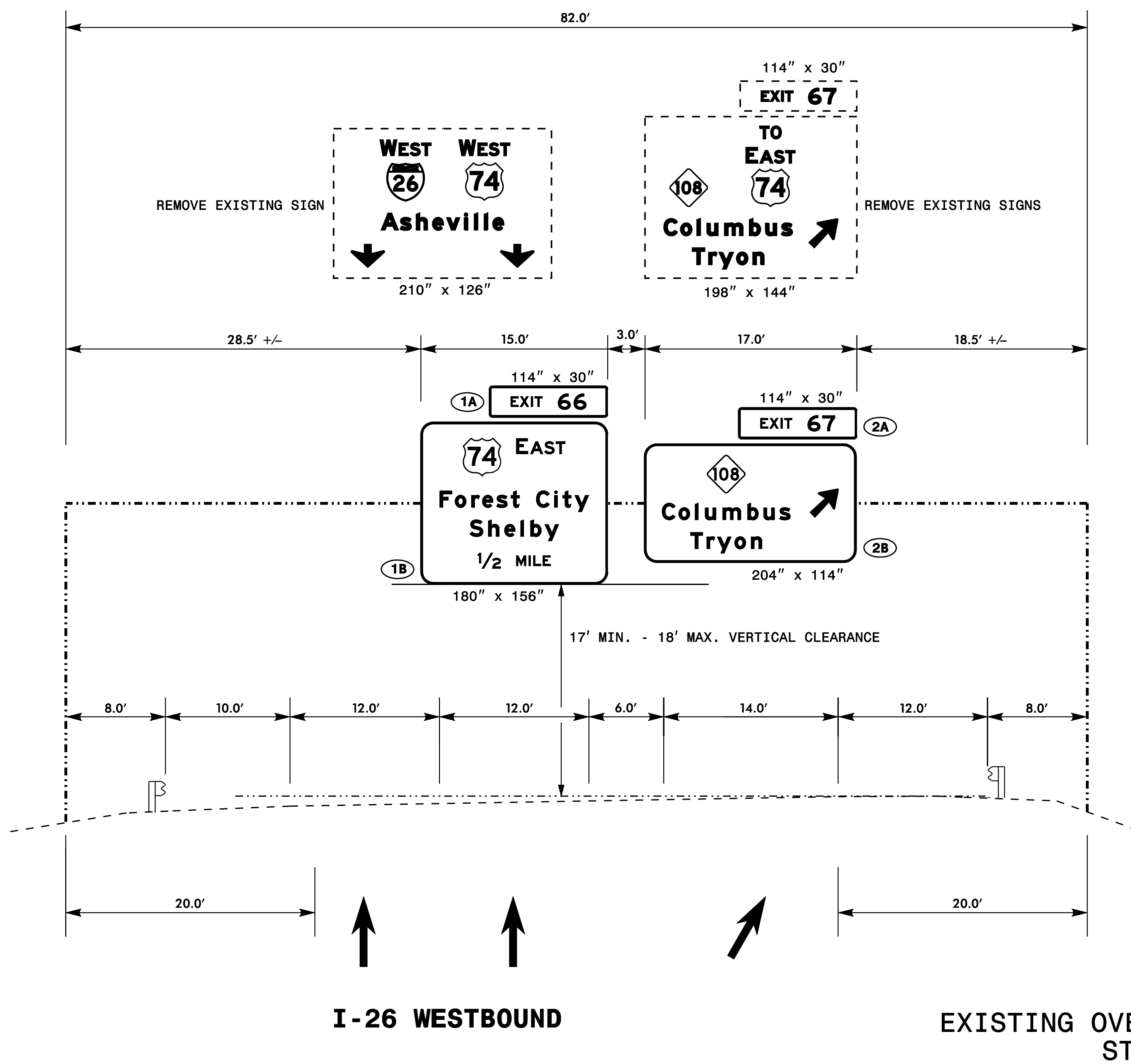
1. MOUNT SIGNS VERTICALLY CENTERED ON HORIZONTAL MEMBER OF STRUCTURE.
2. FIELD VERIFICATION SHALL BE REQUIRED FOR ALL FOOTING ELEVATIONS, PER THE LATEST NCDOT STANDARD SPECIFICATIONS FOR ROADS AND STRUCTURES.
3. THE TOP OF THE FOOTING SHALL EXTEND AT LEAST 6 INCHES AND NOT MORE THAN 24 INCHES ABOVE THE HIGHEST POINT OF THE GROUND SURFACE AT THE FOOTING.
4. SIGN HANGERS AND ATTACHMENT HARDWARE SHALL BE PROVIDED AND INSTALLED ON THE ASSEMBLY TO ACCOMMODATE ALL SIGNS SHOWN IN THIS PLAN SHEET.
5. DESIGN AND CONSTRUCTION REQUIREMENTS FOR SIGN STRUCTURES SHALL ACCOMMODATE WIND VELOCITY OF 90 M.P.H.

PROPOSED OVERHEAD SIGN ASSEMBLY C  
STA. 27+47.55 -RP D- /STA. 10+00 -RP G REV-

**SIGNING PLANS**



DOCUMENT NOT CONSIDERED FINAL  
 UNLESS ALL SIGNATURES COMPLETED



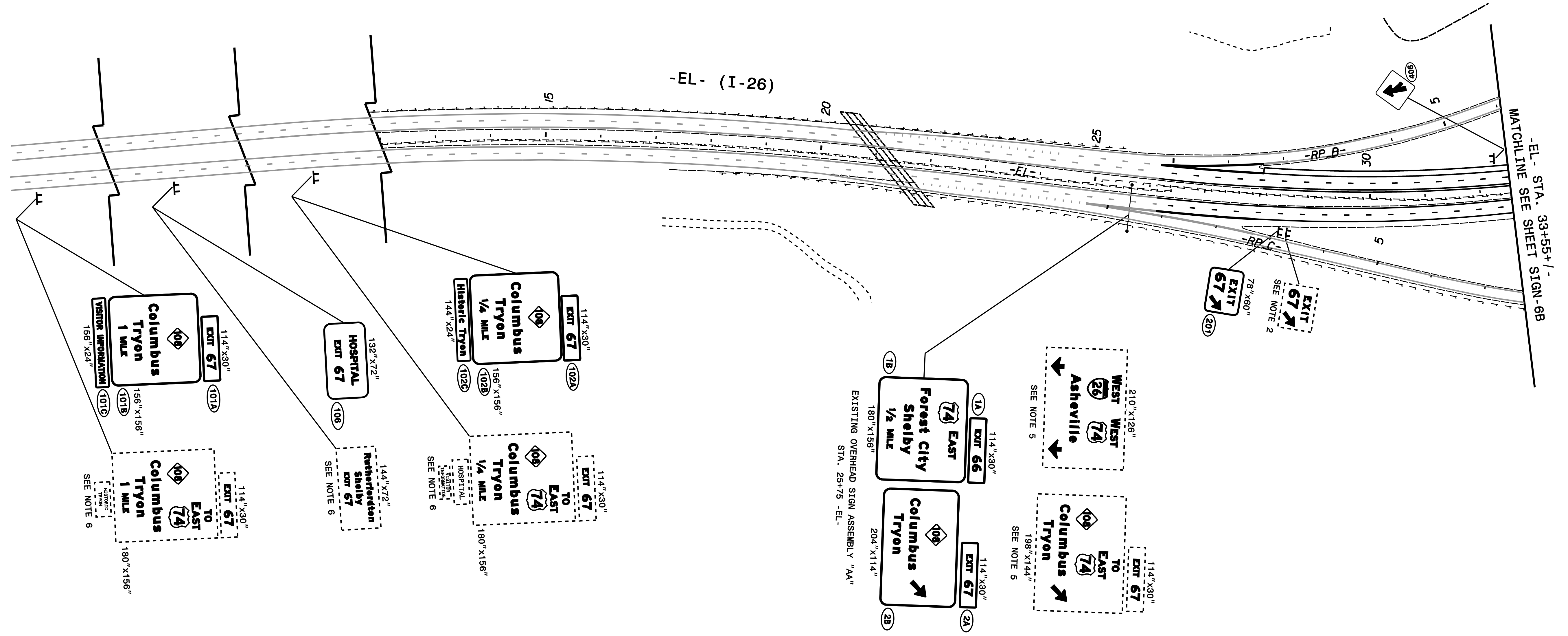
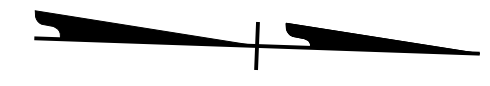
**I-26 WESTBOUND**

**EXISTING OVERHEAD SIGN ASSEMBLY AA  
 STA. 25+75 -EL-**

- NOTES:
1. MOUNT SIGNS TO MEET CLEARANCE REQUIREMENTS SHOWN ON THIS PLAN SHEET.
  2. EXISTING SIGN SIZES WERE PROVIDED BY DIVISION 14. SIGN AREA OF PROPOSED SIGNS DOES NOT EXCEED SIGN AREA OF EXISTING SIGNS. LIGHTS AND WALKWAY WERE PREVIOUSLY REMOVED.

**SIGNING PLANS**

DOCUMENT NOT CONSIDERED FINAL  
 UNLESS ALL SIGNATURES COMPLETED

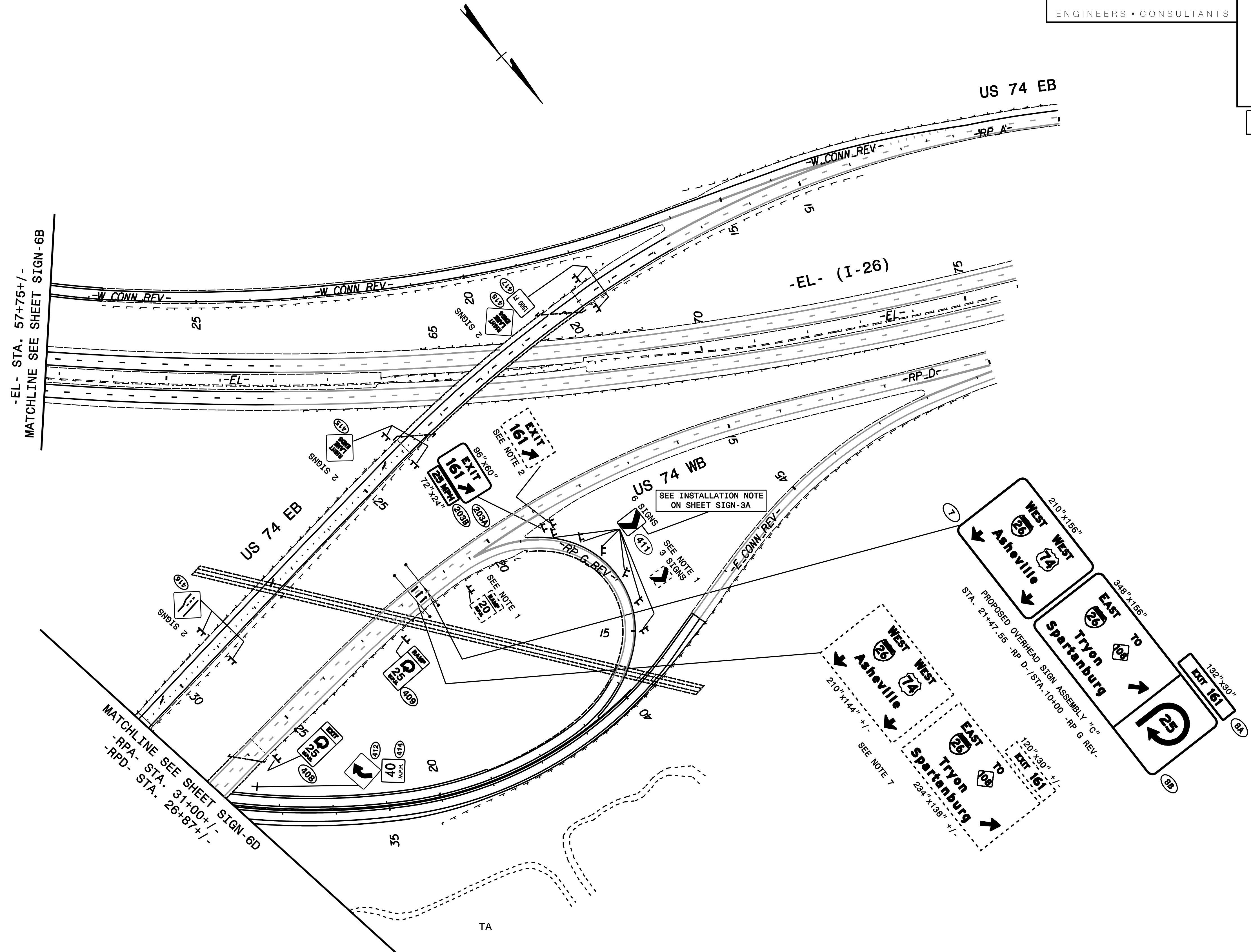


MATCHLINE SEE SHEET SIGN-6B  
 -EL- STA. 33+55+/-

**SIGNING PLANS**



DOCUMENT NOT CONSIDERED FINAL  
 UNLESS ALL SIGNATURES COMPLETED



**SIGNING PLANS**

