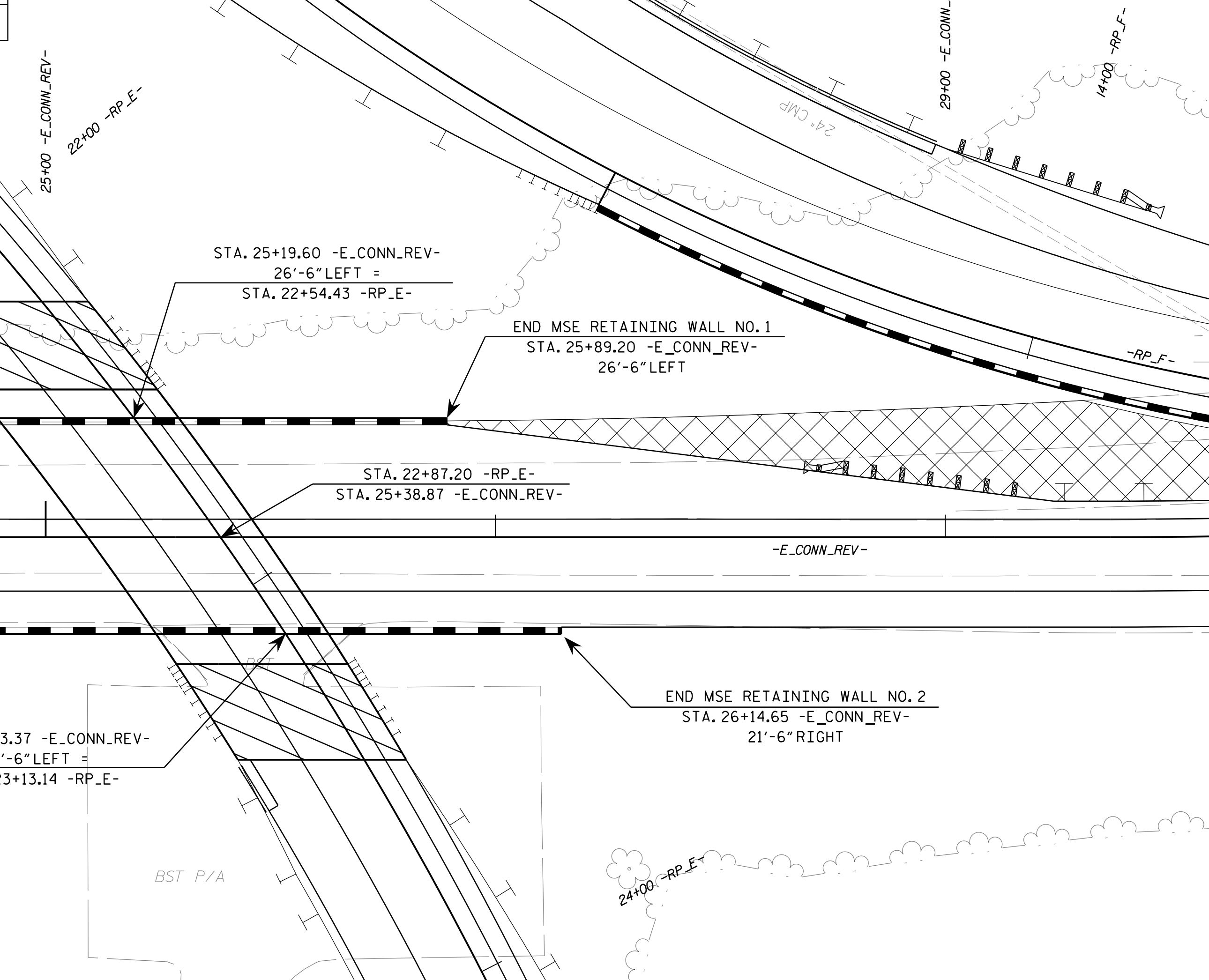
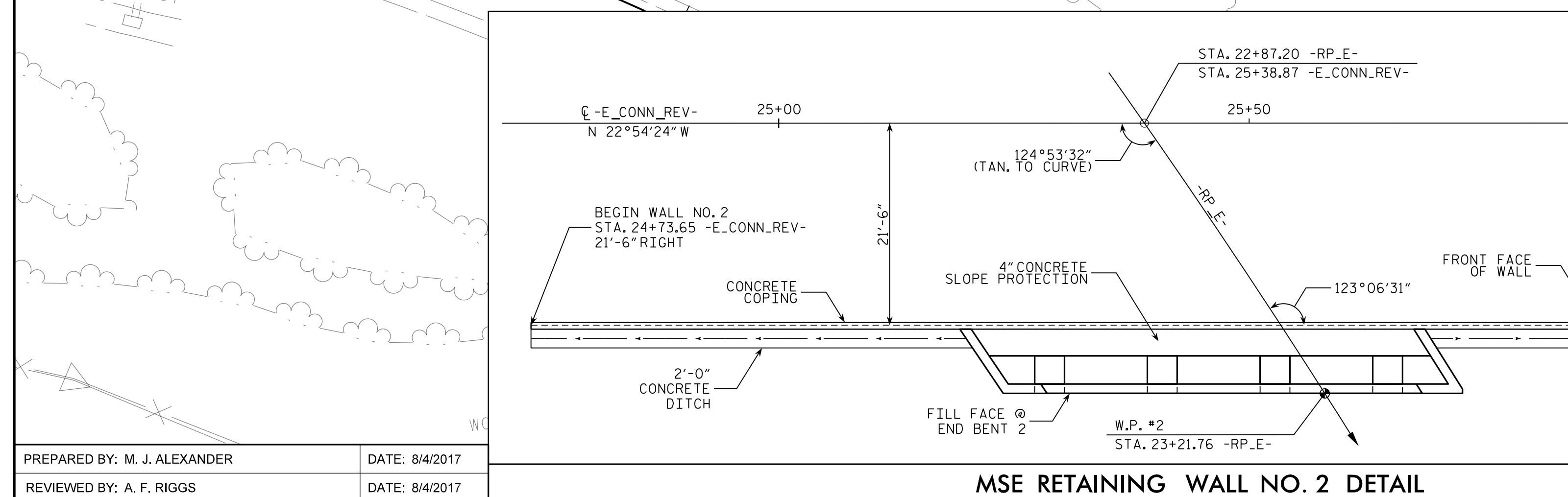
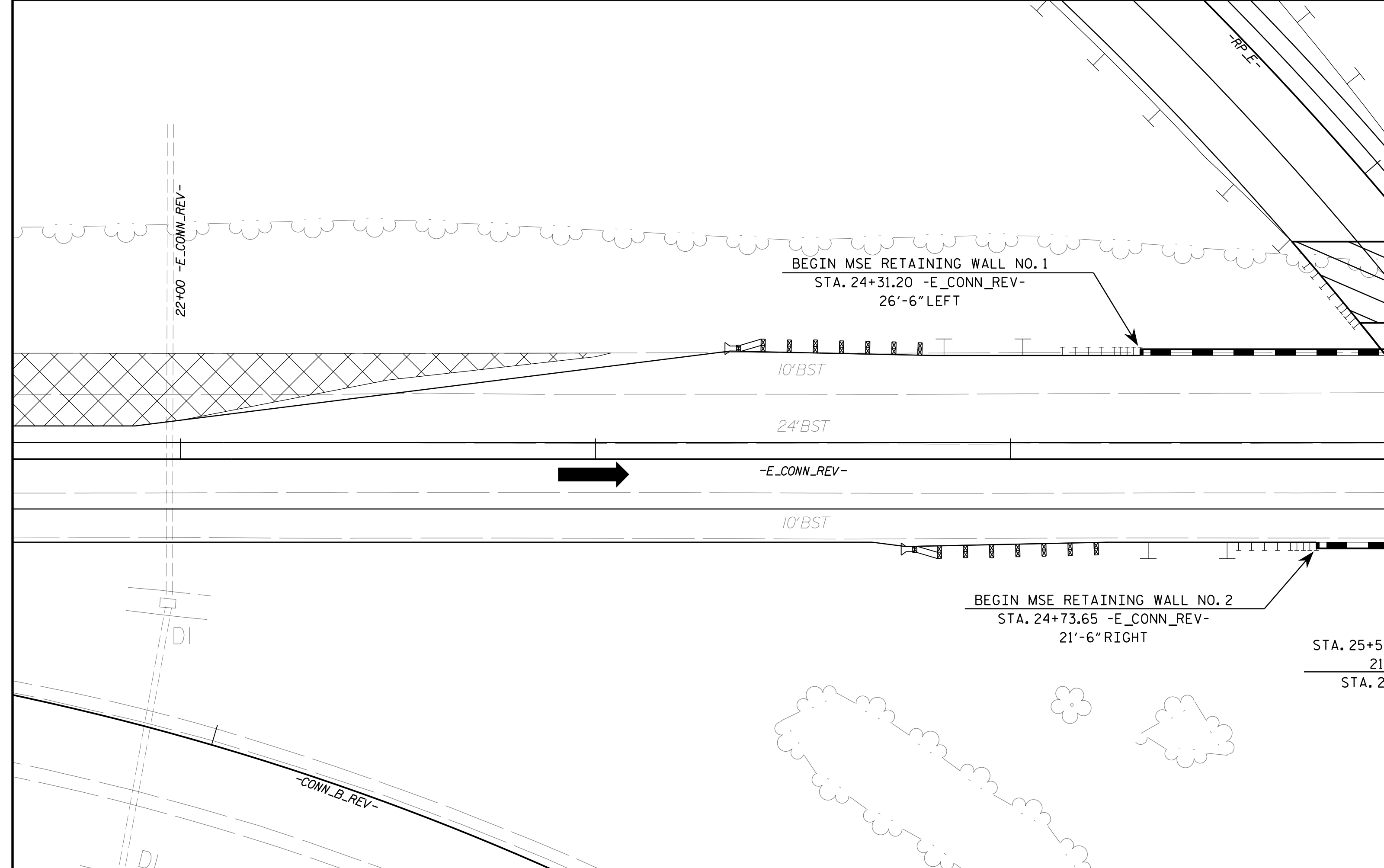


**GEOTECHNICAL ENGINEER**  
 NORTH CAROLINA PROFESSIONAL SEAL 040231  
 MATTHEW J. ALEXANDER  
 8/10/2017  
 DOCUMENT NOT CONSIDERED FINAL UNLESS ALL SIGNATURES COMPLETED

**MSE RETAINING WALL NO. 1 DETAIL**



**Terracon**  
 Consulting Engineers & Scientists  
 2401 BRENTWOOD ROAD, SUITE 107  
 RALEIGH, NORTH CAROLINA 27604  
 PHONE: (919) 873-2211 FAX: (919) 873-9555  
 NC REGISTERED FIRM: F-0869

PROJECT NO.: 34243.1.4 (I-4729A)  
 POLK COUNTY  
 STATION: 22+87.20 -RP.E- / 25+38.87 -E.CONN.REV-  
 SHEET 1 OF 8

REVISIONS					
NO.	BY	DATE	NO.	BY	DATE
1			3		
2			4		

SHEET NO. W-1

PREPARED BY: M. J. ALEXANDER  
 DATE: 8/4/2017  
 REVIEWED BY: A. F. RIGGS  
 DATE: 8/4/2017