

**GENERAL NOTES**

SLOPE PROTECTION SHALL BE PLACED UNDER THE ENDS OF THE BRIDGE AS SHOWN IN THE DETAILS.

STRAIGHT EDGING WILL NOT BE REQUIRED UNLESS, IN THE OPINION OF THE ENGINEER, VISUAL INSPECTION INDICATES A NEED FOR IT.

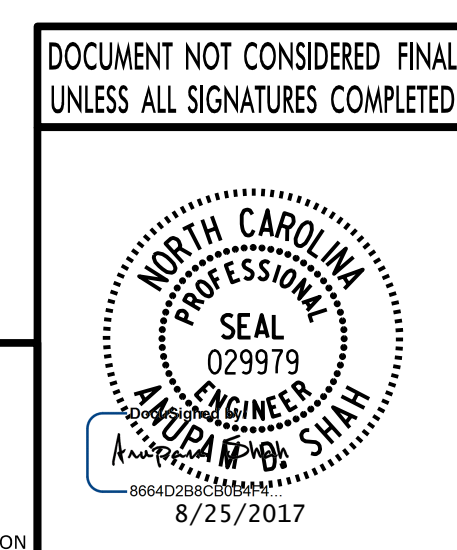
MEASUREMENT AND PAYMENT SHALL BE AS PRESCRIBED IN SECTION 462 OF THE STANDARD SPECIFICATIONS.

SLOPE PROTECTION SHALL CONSIST OF 4" POURED-IN-PLACE CONCRETE PAVING AS SHOWN IN THE DETAILS ON THIS SHEET. CONCRETE SHALL BE CLASS "B". THE CONCRETE SURFACE SHALL BE FLOATED WITH A WOODEN FLOAT AND FINISHED. WELDED WIRE FABRIC REINFORCING SHALL BE 6 x 6 - W1.4 x W1.4. SLOPE PROTECTION SHALL BE POURED IN 5' STRIPS AS SHOWN IN THE "POURING DETAIL" WITH 2'-0" LONG #4 BARS PLACED ALONG THE SLOPE BETWEEN STRIPS AT 1'-6" MAXIMUM SPACING. SLOPE PROTECTION MAY BE POURED IN ALTERNATE 4' AND 5' STRIPS AS SHOWN IN THE "OPTIONAL POURING DETAIL" WITH ADJACENT RUNS OF WELDED WIRE FABRIC LAPPING AT LEAST 6". THE COST OF THE WELDED WIRE FABRIC AND #4 BARS, IF USED, SHALL BE INCLUDED IN THE CONTRACT UNIT PRICE BID PER SQUARE YARD FOR SLOPE PROTECTION.

PROJECT NO. **I-4729A**  
**POLK** COUNTY  
 STATION: **21+44.22 -RP\_F-**

**PLAN**  
 APPROACH SLABS AND CONCRETE DITCHES NOT SHOWN

BRIDGE AT STA. 21+44.22 -RP_F-	4" SLOPE PROTECTION	WELDED WIRE FABRIC
	SQUARE YARDS	APPROX. LINEAR FEET
END BENT 1	19	34
END BENT 2	26	48



STATE OF NORTH CAROLINA  
 DEPARTMENT OF TRANSPORTATION  
 RALEIGH

**STANDARD**

**SLOPE PROTECTION DETAILS**

REVISIONS					
No.	BY	DATE	No.	BY	DATE
1	LOFTON	8-25-17	3		
2			4		

SHEET No. **S2-28.1**  
 TOTAL SHEETS **31**

ASSEMBLED BY : K. E. LOFTON DATE : 7-17  
 CHECKED BY : D. PRETORIUS DATE : 7-17

DRAWN BY : ELR 5/92 REV. 10/1/11 MAA/GM  
 CHECKED BY : GRP 6/92 REV. 12/21/11 MAA/GM  
 DATE: 8/20/17 REV. 1/16 MAA/TMG

REVISD PILE SIZE.

PLANS PREPARED BY : **PARSONS**  
 5540 CenterView Drive, Suite 217  
 Raleigh, NC 27606-3386  
 NC LICENSE No. F-0246  
 FOR NORTH CAROLINA DEPARTMENT OF TRANSPORTATION

DRAWN BY : K. E. LOFTON DATE : 7-17  
 CHECKED BY : A. D. SHAH DATE : 7-17  
 DESIGN ENGINEER : S. PHAN DATE : 7-17