

PROJECT NO. **I-4729A**
POLK COUNTY
 STATION: **21+44.22 -RP_F-**

SHEET 1 OF 3

NOTES

- STIRRUPS AND "U" BARS IN CAP MAY BE SHIFTED AS NECESSARY TO CLEAR ANCHOR BOLTS.
- FOR SECTION A-A, SEE SHEET 3 OF 3.
- FOR LOCATION OF ELEVATIONS BETWEEN BRIDGE SEAT BUILD-UPS, SEE SECTION VIEWS ON SHEET 3 OF 3.
- FOR PILE SPLICE DETAILS, SEE SHEET 3 OF 3.
- FOR TEMPORARY DRAINAGE AT END BENT DETAIL, SEE SHEET 3 OF 3.
- THE CONCRETE IN THE SHADED AREA OF THE WING SHALL BE POURED AFTER THE BARRIER RAIL IS CAST IF SLIP FORMING IS USED.
- BACKWALL SHALL BE PLACED BEFORE APPLYING THE EPOXY PROTECTIVE COATING.
- ▲ THIS ELEVATION IS TAKEN AT FILL FACE OF BACKWALL.
- THE COST TO FURNISH AND INSTALL THE 30" Ø CORRUGATED METAL CANS SHALL BE INCLUDED IN THE CONTRACT PRICE FOR MSE RETAINING WALL.
- WING (W3) AND WING (W4) DETAILS ARE BASED ON A 5 1/2" WALL PANEL THICKNESS AND USING DOWELS FOR THE COPING. CONTRACTOR MAY ADJUST WINGS SLIGHTLY AS NECESSARY, BASED ON APPROVED MSE WALL SHOP DRAWINGS.
- UNO = UNLESS NOTED OTHERWISE

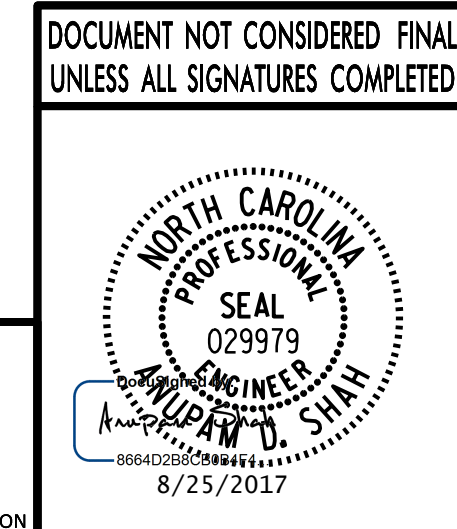
TABLE OF GIRDER VARIABLES				
END BENT 2	A (FT.)	B (FT.)	C (DEG.)	D (FT.)
GIRDER B1	3'-8 1/16"	2'-7 1/4"	134°06'07"	4'-4 5/16"
GIRDER B2	3'-8 3/8"	2'-6 1/2"	133°22'50"	4'-3"
GIRDER B3	3'-7 7/8"	2'-5 3/4"	132°41'11"	4'-1 13/16"
GIRDER B4	3'-7 1/16"	2'-5 1/16"	132°01'04"	4'-0 5/8"
GIRDER B5	3'-7"	2'-4 3/8"	131°22'23"	3'-11 9/16"
GIRDER B6	3'-6 1/16"	2'-3 13/16"	130°45'02"	3'-10 1/2"

STATE OF NORTH CAROLINA
 DEPARTMENT OF TRANSPORTATION
 RALEIGH

SUBSTRUCTURE
END BENT 2

REVISIONS					
No.	BY:	DATE:	No.	BY:	DATE:
1	LOFTON	8-25-17	3		
2			4		

SHEET No. **S2-25.1**
 TOTAL SHEETS **31**
 STR. #2



PLANS PREPARED BY:
PARSONS
 5540 CenterView Drive, Suite 217
 Raleigh, NC 27606-3386
 NC LICENSE No. F-0246
 8/25/2017

REVISIONS

DRAWN BY: M. CLAREY, DESIGNERS	DATE: 7-17
CHECKED BY: D. PRETORIUS	DATE: 7-17
DESIGN ENGINEER: D. PRETORIUS	DATE: 7-17

FILE: I:\Projects\Information\Drawings\Final\RP_F\I-4729A_smc_uf2_4621_Rev1.dgn
 DATE: 8/24/17 10:58 AM