

NOTES

ALL PRESTRESSING STRANDS SHALL BE 7-WIRE LOW-RELAXATION GRADE 270 STRANDS AND SHALL CONFORM TO AASHTO M203 EXCEPT FOR SAMPLING REQUIREMENTS WHICH SHALL BE IN ACCORDANCE WITH THE STANDARD SPECIFICATIONS.

APPLY EPOXY PROTECTIVE COATING TO END OF GIRDER SURFACES.

EMBEDDED PLATE "B-1" SHALL BE GALVANIZED IN ACCORDANCE WITH THE STANDARD SPECIFICATIONS.

ANCHOR STUDS SHALL CONFORM TO AASHTO M169 GRADES 1010 THROUGH 1020 OR APPROVED EQUAL, AND SHALL MEET THE TYPE "B" REQUIREMENTS OF SUBSECTION 7.3 OF THE ANSI/AASHTO/AWS D1.5 BRIDGE WELDING CODE.

ALL PRESTRESSED STRANDS SHALL BE CUT FLUSH WITH THE GIRDER ENDS.

THE TRANSFER OF LOAD FROM THE ANCHORAGES TO THE GIRDER SHALL BE DONE WHEN CONCRETE HAS REACHED A COMPRESSIVE STRENGTH OF NOT LESS THAN 5900 PSI.

DEPENDING ON THE TYPE OF SYSTEM USED TO SUPPORT THE DECK SLAB FORMS, PRESET ANCHORS MAY BE NECESSARY IN THE PRESTRESSED CONCRETE GIRDER.

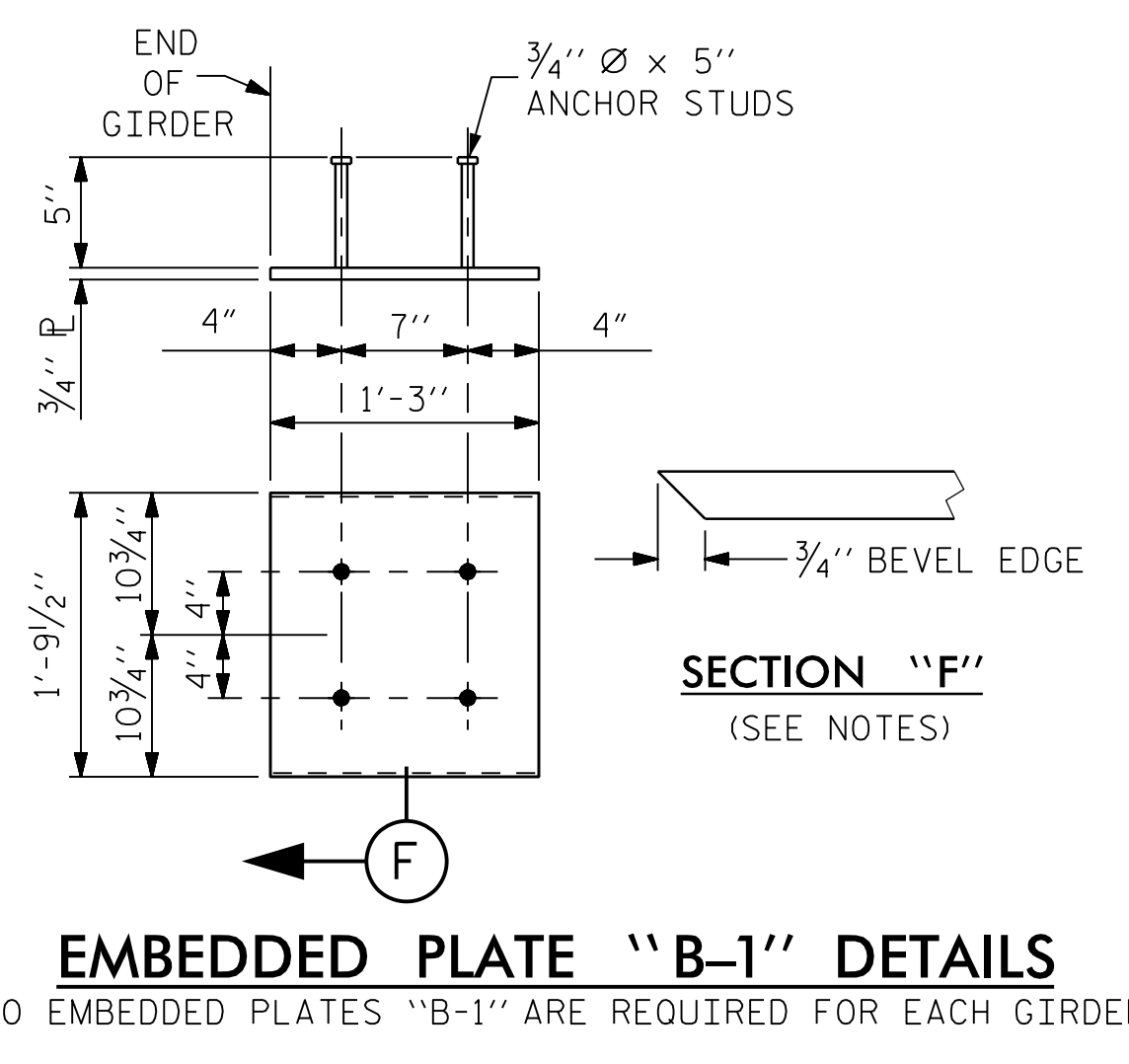
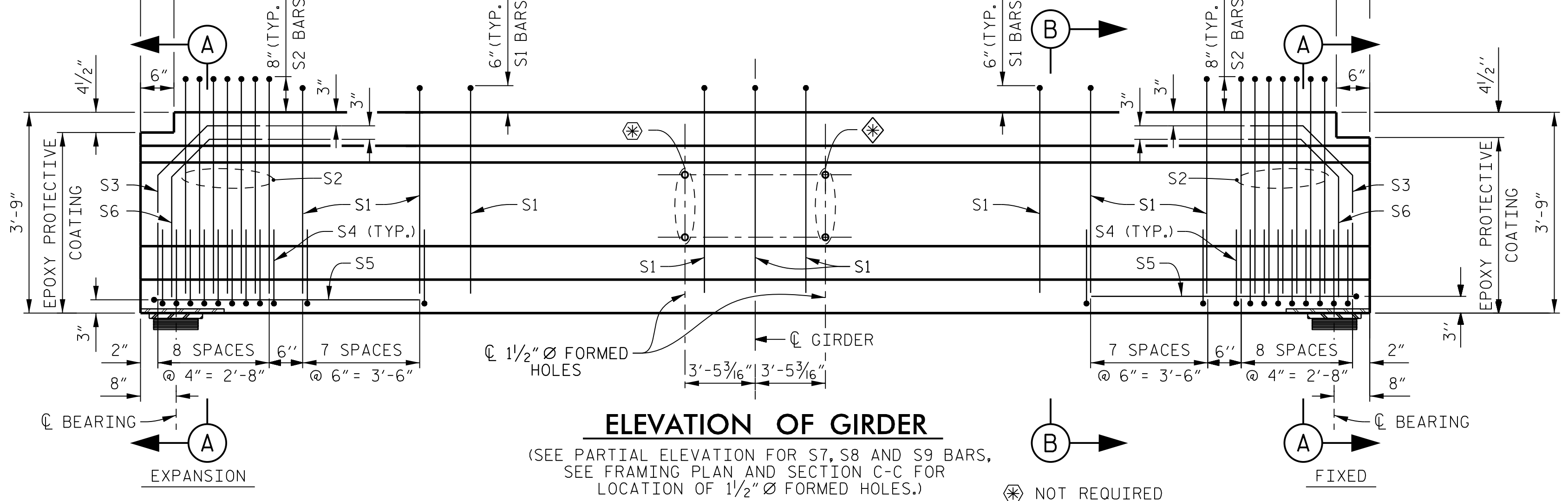
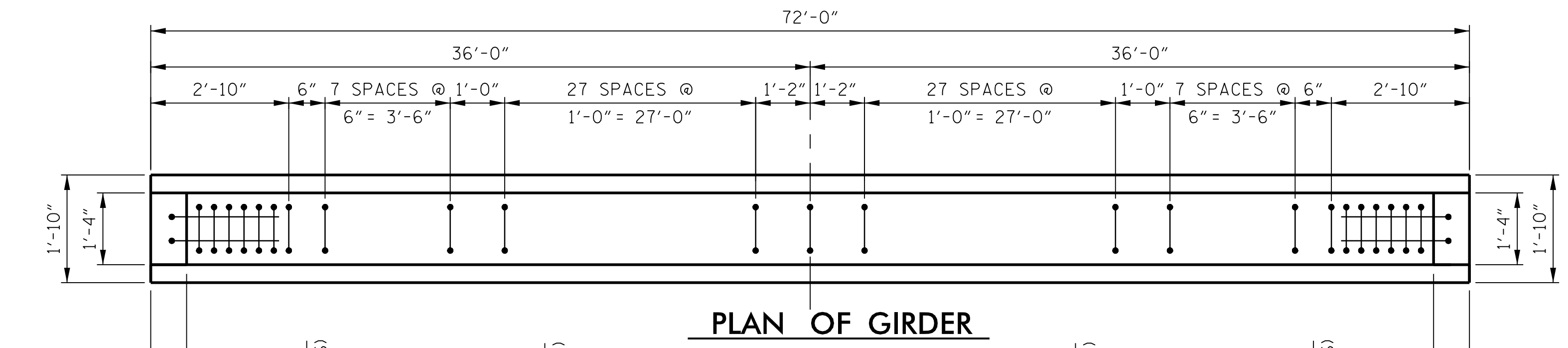
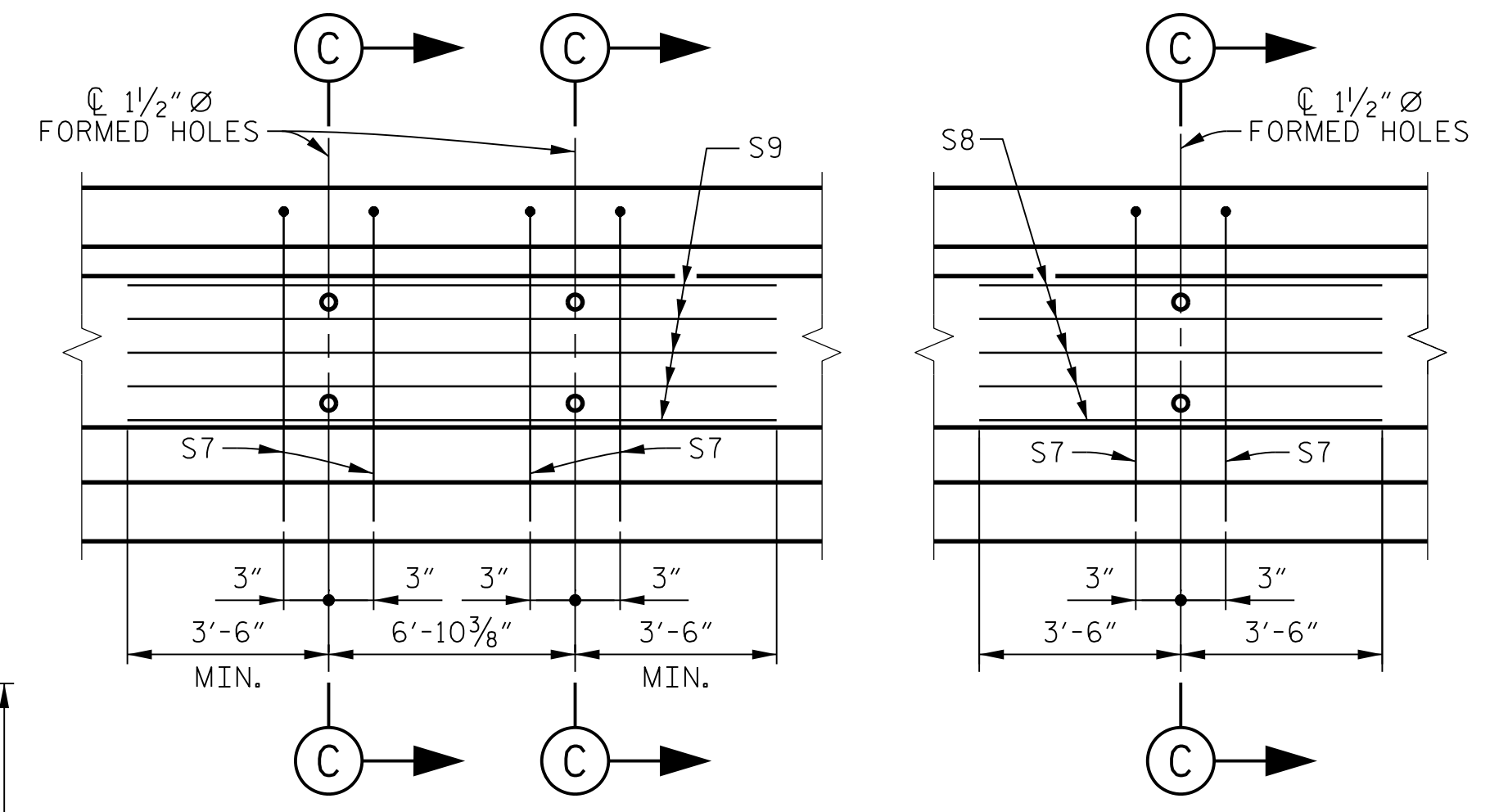
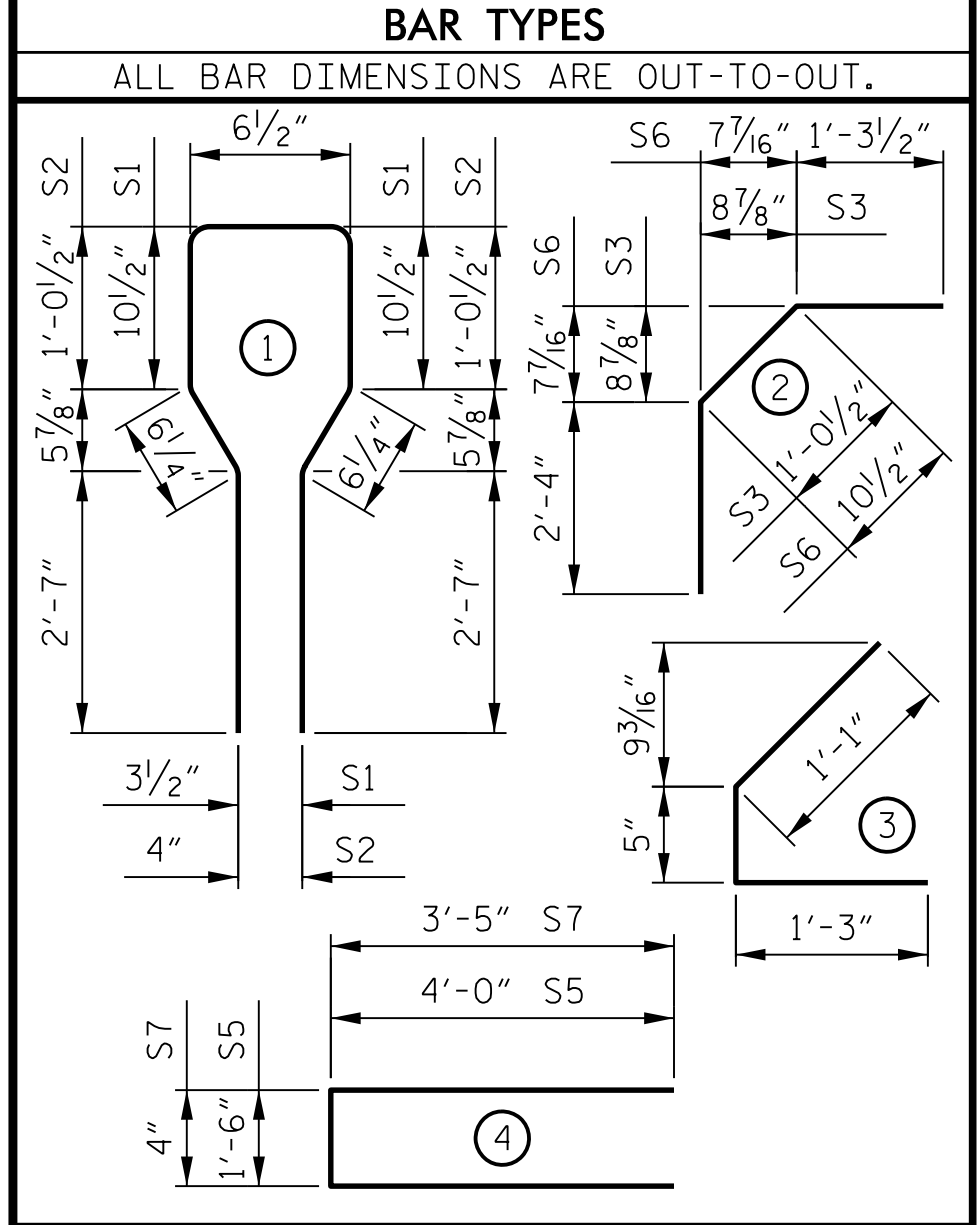
THE TOP SURFACE OF THE GIRDER SHALL BE RAKED TO A DEPTH OF 1/4" EXCEPT IN THE AREA BETWEEN THE STIRRUP AND THE EDGE OF THE GIRDER.

FOR EMBEDDED CLIPS FOR PRESTRESSED CONCRETE GIRDERS, SEE SPECIAL PROVISIONS.

GIRDERS 1 AND 4	S1	73	#4	1	8'-6"	414
GIRDERS 2 AND 3	S2	14	#6	1	8'-10"	186
	S3	4	#6	2	4'-8"	28
	S4	68	#4	3	2'-9"	125
	S5	2	#4	4	9'-6"	13
	S6	4	#6	2	4'-6"	27
	S7	2	#5	4	7'-2"	15
	S8	5	#4	STR	7'-0"	23
	S7	4	#5	4	7'-2"	30
	S9	5	#4	STR	14'-0"	47

0.6" Ø L.R. GRADE 270 STRANDS		
AREA (SQUARE INCHES)	ULTIMATE STRENGTH (LBS. PER STRAND)	APPLIED PRESTRESS (LBS. PER STRAND)
0.217	58,600	43,950

REINFORCING STEEL FOR ONE GIRDER					
BAR	NUMBER	SIZE	TYPE	LENGTH	WEIGHT
S1	73	#4	1	8'-6"	414
S2	14	#6	1	8'-10"	186
S3	4	#6	2	4'-8"	28
S4	68	#4	3	2'-9"	125
S5	2	#4	4	9'-6"	13
S6	4	#6	2	4'-6"	27
S7	2	#5	4	7'-2"	15
S8	5	#4	STR	7'-0"	23
S7	4	#5	4	7'-2"	30
S9	5	#4	STR	14'-0"	47



QUANTITIES FOR ONE GIRDER			
	REINFORCING STEEL	7,500 PSI CONCRETE	0.6" Ø L.R. STRANDS
	LB.	C.Y.	No.
GIRDERS 1 AND 4	831 LBS.	10.4	26
GIRDERS 2 AND 3	870 LBS.	10.4	26
GIRDERS REQUIRED			
NUMBER	LENGTH	TOTAL LENGTH	
4	72'-0"	288,000'	

PROJECT NO. I-4729A
 POLK COUNTY
 STATION: 22 + 87.20 -RP E-

STATE OF NORTH CAROLINA
 DEPARTMENT OF TRANSPORTATION
 RALEIGH
 STANDARD
 AASHTO TYPE III
 PRESTRESSED CONCRETE GIRDER
 SPAN A

REVISIONS						SHEET No. S1-9
No.	BY:	DATE:	No.	BY:	DATE:	
1			3			TOTAL SHEETS 24
2			4			

FILE: I:\Projects\Structures\Highways\Final\02-1129A_smc_srf_1.ppt.dgn
 DATE: 8/10/2017 10:25:24 AM

ASSEMBLED BY : K. E. LOFTON DATE : 5-17
 CHECKED BY : A. D. SHAH DATE : 7-17
 DRAWN BY : JMB 12/87 REV. 10/1/11 MAA/GM
 CHECKED BY : ARB 12/87 REV. 1/15 MAA/TMG
 REV. 2/15 MAA/TMG

DRAWN BY : K. E. LOFTON DATE : 5-17
 CHECKED BY : A. D. SHAH DATE : 7-17
 DESIGN ENGINEER : A. D. SHAH DATE : 8-17

PLANS PREPARED BY :
PARSONS
 5540 CenterView Drive, Suite 217
 Raleigh, NC 27606-3386
 NC LICENSE No. F-0246

