

HORIZONTAL CURVE DATA -RP E-

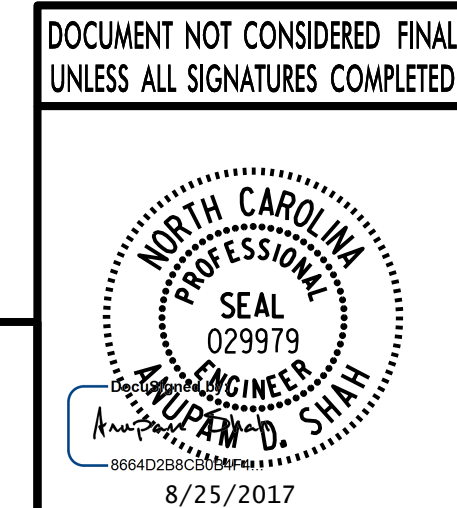
PI = STA. 21+94.30
$\Delta = 84^\circ 24' 50.1''$ (RT.)
D = 6° 52' 41.7"
L = 1,227.26'
T = 755.50'
R = 833.00'

PROJECT NO. **I-4729A**
POLK COUNTY
 STATION: **22 + 87.20 -RP E-**
25 + 38.87 -E CONN REV-
 SHEET 1 OF 4 BRIDGE No. 740232

STATE OF NORTH CAROLINA
 DEPARTMENT OF TRANSPORTATION
 RALEIGH

GENERAL DRAWING
BRIDGE OVER
RAMP (-E CONN REV-) ON
RAMP (-RP E-) BETWEEN
I-26 AND US 74

REVISIONS						SHEET No.
No.	BY:	DATE:	No.	BY:	DATE:	1-1
1	LOFTON	8-25-17	3			TOTAL SHEETS
2			4			24



PLANS PREPARED BY:
PARSONS
 5540 CenterView Drive, Suite 217
 Raleigh, NC 27606-3386
 NC LICENSE No. F-0246
 FOR NORTH CAROLINA DEPARTMENT OF TRANSPORTATION

REVISI...
 DRAWN BY: K. E. LOFTON DATE: 5-17
 CHECKED BY: A. D. SHAH DATE: 7-17
 DESIGN ENGINEER: A. D. SHAH DATE: 8-17

FILE: I:\Projects\Information\Drawings\Final\RP E-I-4729A.dwg
 DATE: 8/24/2017 3:08:54 PM